

# Sloan Performing Arts Center



**407 Alumni Road Rochester, NY 14627**

## **Technical Specifications**

**Version 2**

**Updated 8/2/23**

**Contact(s):**

Christopher VerSchneider  
Sloan Performing Arts Center  
Facility Technical Director

[Christopher.VerSchneider@rochester.edu](mailto:Christopher.VerSchneider@rochester.edu)

Office Phone 1(585)273-5146

# Index

Building Information.....	3
Theatre Information.....	4
Lighting Information.....	6
Lighting Inventory.....	7
Sound Information.....	10
Sound Inventory.....	11
Projection Information.....	14
Projection Inventory.....	14
Drape Inventory.....	15
Rigging Inventory.....	16
Ground Plans & Sections.....	17

# Building Information

## Lobby:

Located off main building entrance accessible via front ramp area or stairs

Approximately 2,180sf with movable furniture.

Public restrooms are located one level down accessed via a straight stair or elevator.

The box office/concessions area is an all one continuous counter, approximately 30' long curved at one end to the wall.

**Amenities:** Sink, small water cooler on wheels

**Furniture:** (10) lounge chairs, (5) 2' round lounge tables, (3) Café 36" round tables, (12) Café chairs, (2) 30" High top round tables  
(4) Bar height chairs

## Greenroom:

Located in the basement across from the Dressing Rooms

Access via lobby straight stairs, elevator (both shared access with public & lobby) or backstage winding staircase

**Amenities:** (1) Top and bottom fridge with in door water, ice & freezer, (1) Microwave, (1) Keurig coffee maker, (1) Sink

**Furniture:** (2) Café rounds, (7) Café seats, (5) Rolling/foldable 5'x2' tables, (8) Rolling chairs, (4) Counter height chairs, (1) Counter height seating area

**Notes:** All perishable & service items to be provided by end user (food, drinks, cups, flatware, plates...)

## Dressing Rooms:

Located in the basement across from Greenroom

Access via lobby straight stairs, elevator (both shared access with public & lobby) or backstage winding staircase

(2) Identical 12 station accessible dressing rooms A & B

**Amenities (each room):** (12) Stations with lighting & mirrors, Single occupancy accessible restroom with sink & toilet, Single occupancy shower room, Sink, Lockers available upon request

**Furniture (each room):** (12) Rolling chairs, (3) 7' Wenger clothing racks

**Notes:** All perishable & service items to be provided by end user (towels, soap, shampoo, hair products, blowdryers...)

## Laundry:

Located in the basement adjacent to the green room & dressing rooms

Access via lobby straight stairs, elevator (both shared access with public & lobby) or backstage winding staircase

**Amenities:** (2) Front load GE high efficiency residential washers, (2) Front Load GE high efficiency residential dryers, (1) Vulcan clothing dye vat, (1) GE topload washer specific for dye vat, Deep basin stand alone sink, counter insert sink, (1) Jiffy portable steamer

Full laundry use can be arranged with advanced notice.

**Notes:** All perishable & service items to be provided by end user (detergent, dryer sheets, dye...)

## Wardrobe:

Located in basement adjacent to the green room & dressing rooms

Access via lobby straight stairs, elevator (both shared access with public & lobby) or backstage winding staircase

Full costume shop use can be arranged with advanced notice & agreement with theatre department

Wardrobe support can be arranged with advance notice & agreement with theatre department

## Loading Dock:

Loading is through the scene shop. Dock door is 8'-0" wide 12'-0" high. Dock height is 2' - 2'-3" high. There is a roll up door out of the shop and large hinged doors to provide access to the stage, same size or larger.

All loading in/out must be coordinated with Facility Technical Director and arranged with scene shop manager.

# Theatre Information:

## Overview:

Smith theatre is a flexible use black box space, stage area and size are variable dependent on diagram, desired use, and seating requirements for each event. Seating is telescoping risers at stage level with loose chairs. Risers are not removable from the space.

**Room Size:** 70'-0" x 50'-0"

**Stage Size:** Variable

41'-5" clear from face of gallery to face of gallery

**Height:** 21'-0" to the underside of the catwalks

19'-0" to underside of side galleries

31'-6" to underside of roof steel

**Doorways:** Entrances & exits are located in the four corners of the space. Doors on North wall (lobby side) have a light lock, doors on South wall (shop side) empty directly into the backstage hallway.

**Storage:** Two storage locations are under the technical/actor mezzanine on the North wall (lobby side). The storage double doors open into the main space, these doors must be kept accessible at all times. See ground plans for exact location.

## Stage Floor:

Stage floor is a resilient assembly of rubber puck, wood sleeper, plywood layers with hardboard (Masonite) top sacrificial surface. Drilling and screwing IS allowed with permission.

Painted twice a year with Rosco Tough Prime Black

Events requiring the painting of the floor outside of standard black must purchase and install a show floor (Masonite or the like)

Design load: 150 PSF with 2,000lb point load.

## Catwalks:

There are 5 catwalks 3'-10" wide out to out

8'-2" clear between catwalks

There are galleries on 3 sides : East side is 6'-10" wide , North side is 4'-3" wide , south side is 7'-2" wide

See the plans for additional details

## Rigging Beams:

(4) rigging beams running the full length of the venue, perpendicular to the catwalks on 8'-0" centers, splitting center, two on each side of center line.

Beams are designed for 2000lb point load, max 4 loads per beam (8,000lbs) , no closer than 4 feet on center, no more than 12,000lbs total across all beams.

There is strut below the beams in the two bays furthest to the west, where obstructions prevent access to the beam itself. The strut load is designed for 1 point load NOT TO EXCEED 1100lbs on the short piece and 530lbs on the longer piece.

Additional rigging points can be requested and will require engineer evaluation and sign off.

## Wall Strut:

Horizontal strut is located on the perimeter walls (all 4 sides) starting 4 feet above the floor and 4 foot on center.

Design load is point load of 500lbs with no more than 6 loads per strut no closer together than 3'-0".

## Mezzanine:

There is a technical and performer Mezzanine on the south side accessed via a ships ladder. The stage face is a demountable railing in sections each approximately 3'-0" wide.

Arrangements must be made in advance to remove the railings.

See the plans for additional details.

Audience is NOT permitted on the Mezzanine.

## Water & Air on Stage

Cable passes provide access to janitor closet on North side and scene shop.

Discuss requirements in advance.

Use of any water effects or body of water on stage for productions will require at minimum 6 months advance notice.

## Show Power:

Catwalk North East: (1) 200A 3ph 120/208V Camlock company switch with split neutral. Can accept bare end 4/0 tails.

Male connector: Ground (green) & Neutral (white)

Female connector: Hot phases (black, blue, red)

Catwalk South East: 100A 3ph 120/208V pin and sleeve

## Motor Power

L21-30 receptacle located center of each catwalk section

## Seating

Seating utilizes two portable telescopic units with rows of seating possible, 16.5" row to row height, chairs are loose & padded.

Fixed aisle located on each side when combined, or on a single side per unit when broken into two sections.

### **Riser Capacity**

<b>Configuration</b>	<b>Chairs Row 1-7</b>	<b>Chairs Row 8</b>	<b>Total Chair Count</b>	<b>ADA Seating</b>	<b>Notes</b>
<b>Combine</b>	19	23	156	Row 1 only, will need to remove 3 seats per instance	Row 1 is at house stage level
<b>Section A</b>	9	11	74	Row 1 only, will need to remove 3 seats per instance	Row 1 is at house stage level
<b>Section B</b>	9	11	74	Row 1 only, will need to remove 3 seats per instance	Row 1 is at house stage level

\*Total count calculated with full riser deployment\*

\*To calculate event capacity multiply number of rows required by 9 or 19 depending on configuration\*

\*Additional rows may be placed in front of row 1 at stage level with prior approval, dependent on staging requirements\*

\*Ground seating or picnic/blanket style seating is not permitted\*

\*Riser minimum spacing from back wall is 1'\*

## Dance Floor:

5 rolls of Harlequin Cascade flooring are available (78.7" wide 44' feet long). Black.

Floor needs to be taped down.

Screwing or stapling through dance floor is not permitted.

Sharp props or scenic objects that may harm the dance floor are not permitted.

No additional sprung floor panels are available (full theatre floor is sprung, see stage floor above for additional details).

Must be requested in advance of load in.

# Lighting Information

**General:**

The backbone of the lighting system is an LED infrastructure using only relays and no traditional dimmers. Data nodes are located at each catwalk and spread through the perimeter of the theatre space at stage level. All nodes are programmable to any DMX Universe

(87) 120V/20A relay circuits

(36) 208V/20A relay circuits

Backpack dimmers available, see inventory below

Portable nodes available, see inventory below

**Console:**

ETC Ion XE-20 12K

**120v 20A Circuits:**

Location	North	South	South East	North East	East	West
Stage	107/ RP1 (10-12)	103/ RP1 (4-6)	101/RP3 (1-3)	109/ RP1 (13-15)	111/ RP1 (16-18)	105/RP1 (7-9)

Location		
Mezzanine	201/RP1 (19-21)	202/RP1 (22-24)

Location	North	South	One	Two	Three	Four	Five	Six
Catwalk East	308/RP2 (7-12)	309/RP21 (25-30)	330/RP3 (19-24)	326/RP3 (13-18)	322/RP3 (7-12)	318 /RP3 (1-6)	314/RP2 (13-18)	310/RP2 (1-6)
Catwalk West				328/RP4 (85-87)	324/RP1 (43,45,47)	320/ RP2 (34-36)	316/RP2 (31-33)	312/RP1 (31-33)

**208v 20A Circuits:**

Location	North	South	South East	North East	East	West
Stage	108/RP4 (1/3,2/4)	104/RP3 (37/39,38/40)	102/RP3 (33/35, 34/36)	110/ RP4 (5/7, 6/8)	112/ RP4 (9/11, 10/12)	106 /RP3 (41/43, 42/44)

Location	One	Two	Three	Four	Five	Six
Catwalk East	331/RP3 (25/27, 26/28)	327/RP2 (45/47, 46/48)	323/RP2 (41/43, 42/44)	319/RP2 (37/39,38/40)	315/RP2 (27/29,28/30)	311/RP2 (19/21, 20/22)
Catwalk West	332/ RP3 (29/31, 30/32)		325/RP1 (34/36, 38/40)	321/RP3 (45/47,46/48)	316/RP2 (31-33)	313/RP2 (23/25, 24/26)

DMX and ENET nodes available at each position

# Lighting Inventory

## Control

Manufacture	Type	Model	Quantity	Notes
Electronic Theatre Control	ION Xe 20		1	12,000 Output Max
Electronic Theatre Control	Remote Video Interface		1	
	Touch Screen Monitor		4	
Electronic Theatre Control	ETC Pad		1	
Electronic Theatre Control	2 Port Node (Portable)	RSN-DMX2-0-P-4	4	
Electronic Theatre Control	Backpack Dimmer (Portable)	ES750-0A	15	Single Channel Edison Ends Max of 750W

## Fixtures

Manufacture	Type	Model	Quantity	Voltage	Watage
Electronic Theatre Control	Series 2 Luster	S4LEDS2LS-0	66	110V	171W
Electronic Theatre Control	Colorsource Par	CSPAR	45	110V	90W
Electronic Theatre Control	Colorsource CYC	CSCYC	16	110V	115W
Lycian	Super Arc 400 Standard Throw	1266	2	110V	900W
Electronic Theatre Control	Lonestar	Lonestar	6	110V	615W

## Lenses/Gel/Diffusion

Manufacture	Type	Model	Quantity	Notes
Electronic Theatre Control	19 Degree	419EDLT	20	
Electronic Theatre Control	26 Degree	426EDLT	20	
Electronic Theatre Control	36 Degree	436EDLT	32	
Electronic Theatre Control	50 Degree	450EDLT	12	
Electronic Theatre Control	70 Degree	470LT	8	
Rosco	Optisculpt	10 Degree		
Rosco	Optisculpt	20 Degree		
Rosco	Optisculpt	30 Degree		
Rosco	Optisculpt	40/60 Degree		
Rosco	Diffusion	Various R114, R119, R132	Verify	Will verify with design for quantity needed vs inventory quantity

## Accessories

Manufacture	Type	Model	Quantity	Notes
City Theatrical	5" Top Hat 6 1/4" Frame Size	2840	15	ETC Barrels
City Theatrical	5" Half Hats 6 1/4" Frame Size	2841	15	ETC Barrels
City Theatrical	Donut 6 1/4" Frame Size	2250	15	ETC Barrels 3-3/16" Center Hole
ETC	Pattern Holder (A SIZE)	400PH-A	15	Source Four Fixtures
ETC	Pattern Holder (B SIZE)	400PH-B	15	Source Four Fixtures
ETC	Glass Pattern Holder (B SIZE)	400PH-G	10	Source Four Fixtures
City Theatrical	Drop in Iris	2180	4	Source Four Fixtures
City Theatrical	6" Top Hat 7 1/2" Frame Size	2850	12	Coloursource PAR
City Theatrical	24" Safer Sidearm	204	20	Two Tees
City Theatrical	4' Steel Safer Sidearm	210	6	1 1/2" Pipe
Altman	50 Lb Boom Base	B-50	8	1 1/2" Pipe Standard Thread
Schedule 40	1 1/2" X 12' Boom Pipe	NA	8	Standard Thread
Various	Safety Cable	NA	1/Fixture	One per fixture with (10) spares
ETC	10" Boom Base	PSF1032	2	5 LBS Floor Base

## Cabeling (Power)

Type	Quantity	Color Code	Notes
PowerCon Jumper 5'	50	Red	
PowerCon Jumper 10'	60	Yellow	
PowerCon Jumper 15'	40	Purple	
PowerCon Jumper 25'	50	Green	
PowerCon Jumper 50'	10	Blue	
Edison male to PowerCon Blue Twofer	10		
Edison Male to PowerCon Blue 6' Cable	60		
Edison male to PowerCon Blue 25' Cable	10	Green	
Edison male to PowerCon Blue 50' Cable	8	Blue	
Soca 19 pin to PowerCon Blue 6' Break OUT	12		
Soca 19 pin 12G-14 connector 50' Multi-Cable	12		
Soca 19 pin 12G-14 connector 75' Multi-Cable	2		
Edison 12G Jumper 25'	10		
Edison 12G Jumer 50'	10		
Edison Power Strip	10		
L5-20 Twist Lock Jumper 25'	12		3 Pin Key In Twist Lock
4/0 Camlock 400 Amp Feeder Cable 25' Set	1 Set		Green (Ground), (2) White, Black, Red, Blue



### Cabeling (Data)

Type	Quantity	Color Code	Notes
DMX Jumper 5 Pin 5'	60	Red	
DMX Jumper 5 Pin 10'	60	Yellow	
DMX Jumper 5 Pin 15'	40	Purple	
DMX Jumper 5 Pin 25'	40	Green	
DMX Jumper 5 Pin 50'	5	Blue	
DMX Jumper 5 Pin 75'	12	Orange	
DMX Jumper 5 Pin 100'	2	White	
DMX 5 Pin Male to Male Turnaround	8		
DMX 5 Pin Female to Female Turnaround	8		
DMX 5 Pin Terminator	8		
Neutrick CAT6A EtherCon Jumper 10'	10	Yellow	
Neutrick CAT6A EtherCon Jumper 25'	5	Green	
Neutrick CAT6A EtherCon Jumper 75'	2	Orange	
RJ45 Shielded Ethernet Jumper 10'	10		
RJ45 Shielded Ethernet Jumper 25'	6		
RJ45 Shielded Ethernet Jumper 75'	6		
RJ45 Shielded Ethernet Jumper 100'	2		

### Miscellaneous

Manufacture	Type	Model	Quantity	Notes
Electronic Theatre Control	Cue System 12 Channel	CSN12WCD	1	Desktop
Electronic Theatre Control	Cue Light Pendant	CSNOSS	12	
Lex	Pin & Sleeve 100 Amp Distro Box		1	(10) 20 Amp L6-20 Connections 220Volt
Osram	HTI 400W/24		2	Spare Follow Spot Lamp
Whirlwind	PowerCon Stringer 1 IN – 5 OUT		2	
Whirlwind	Duplex Edison W/passthrough	PL1-420-BK	8	
Lex	5 Slot Cable Ramp	PRC-5	6	

# Sound Information

## Overview:

The Sloan performing arts center sound system is centered around a Biamp Tesira Server I/O Digital Signal Processor with AVB and Dante digital audio. This serves as the processor for the theater loudspeakers and functions as a router and mixer for everyday use of the system, as well as providing paging and background music to common areas and backstage. A Crestron control system serves as the interface for day to day use.

The backbone of the system is a Dante digital audio network comprised of two Cisco Catalyst 9300 Ethernet switches in a redundant configuration. All audio inputs and outputs are via the network. Input/output devices consist of one Yamaha RIO-32x16 permanently mounted in the A/V rack room, and one RIO-16x8 in a portable case. A Yamaha QL5 mixing board provides mixing capabilities. All audio is routed through the Biamp DSP and distributed to the amplifiers via the Dante network.

The house loudspeakers system consists of two Left-Right pairs of Fulcrum Acoustic DX1526, one pair covering the “Stage” and the other pair covering the seating area.

The theater is equipped with numerous I/O plates with microphone inputs, audio tie lines, Dante network ports, Intercom connections and “Dry” data connections. Included with this document is a map of plate locations with the connections available at each location. All of these connections terminate in the rack room. Patch bays for audio and data are mounted in the A/V rack. Microphone channels 1-24 are “fully normalled” through the audio patchbay into the Yamaha RIO-32x26.

Six channels of Shure ULX-D wireless microphones are provided. Four channels are dedicated to the theater while the remaining two are dedicated to the lobby. All channels are available on the Dante network. Handheld and body pack microphones are available for all channels. There are eight rechargeable battery packs and charging bases for the system.

Three channels of stage intercom are available in locations throughout the building including the dressing rooms, green room, conditioning lab, and costume shop. Single and dual channel belt packs are provided. Single channel wall stations (connected to channel “A”) are mounted in the facility managers office and the box office managers office.

The theater has an infra-red hearing assistance system with rechargeable receivers.

There is a hanging microphone mounted in the theater that captures theater audio for distribution to the background music system.

A Yamaha TF rack is mounted in the AV rack for recording and playback. In addition to being connected to the Dante network, 12 analog inputs and 8 analog outputs are available at the patchbay.

# Sound Inventory

## Control

Manufacture	Type	Model	Quantity	Notes
<b>Biamp</b>	Digital Signal Processor	Tesira Server I/O	1	Rack Mounted in AV Room
<b>Yamaha</b>	Digital Mixer	QL5	1	
<b>Yamaha</b>	I/O Stage Box	RIO-32X16	1	Rack Mounted in AV Room
<b>Yamaha</b>	I/O Stage Box	Rio-16x8	1	Portable in Gator Case

## Microphones/Receivers

Manufacture	Type	Model	Quantity	Notes
<b>Shure</b>	Receiver	ULXD4Q-G50	1	Single rack space quad channel receiver for <b>THEATRE</b> wireless (470-534MHz)
<b>Shure</b>	Receiver	ULXD4D-G50	1	Single rack space dual channel receiver for <b>LOBBY</b> wireless (470-534MHz)
<b>Shure</b>	Receiver	ULXD4D-G50	2	Single rack space quad channel receiver in <b>PORTABLE</b> rack (470-534MHz)
<b>Shure</b>	Transmitter	ULXD2/SM58-G50	14	Handheld
<b>Shure</b>	Transmitter	ULXD1-G50	14	Bodypack
<b>Shure</b>	Element	MX150B/C-TQG	6	Cardioid 5mm Subminiature LAV Microphone TQG TA4F Connector (Shure Style)
<b>Shure</b>	Element	TH53C/O-MTQG	12	Twinplex Headset Microphone, Omnidirectional Condenser
<b>Production Intercom</b>	Desktop Microphone	DMB2-D43-PTT	1	2 switch paging microphone page lobby/back stage & house
<b>Production Intercom</b>	Decktop Microphone	DMB1-D43-PTT	1	1 switch paging microphone lobby

## Speakers/Amplifiers

Manufacture	Type	Model	Quantity	Notes
<b>Fulcrum Acoustic</b>	Loudspeaker	DX1526	4	Main speakers installed in pairs Located Under Cat 3 & Cat 5 <b>*Can Not Be Moved*</b>
<b>Ashly</b>	Amplifier	NXE 1504	4	4 Channel Network Amp 2 Ohm 150W Rack Mounted in AV Room <b>*All channels used for house system*</b>
<b>Yamaha</b>	Loudspeaker	DXR12 MKII	8	With yoke mount for hanging to 1.5" pipe in either orientation
<b>RCF</b>	Subwoofer	SUB 702-AS II	2	1,400 W 12-Inch

### Intercom System

Manufacture	Type	Model	Quantity	Notes
Production Intercom	Power Supply	PS301	1	Rack Mounted in AV Room
Production Intercom	3 Channel Master Station	MS301	1	Portable in Gator Case
Production Intercom	Belt Pack 1-Channel	BP-1	8	
Production Intercom	Belt Pack 2-Channel	BP-2	4	
Production Intercom	Headset	DMH920	15	Double-Ear Intercom Headset
Production Intercom	Phone Handset	HH10A	3	Handset at box office station
Clear Com	Headset	CC-110	10	Single-Ear Intercom Headset
Clear Com	Desk Station	KB-702GM	3	(2) Channel Speaker Station

### Assisted Listening System

Manufacture	Type	Model	Quantity	Notes
Listen Technologies	IR Transmitter	LT-82-01	1	Rack mounted in AV room
Listen Technologies	IR Receiver	LR-4200-IR	8	Receiver package with Neck loop & universal ear speaker
Listen Technologies	Rechargeable battery	LA-365	8	Replacement rechargeable battery for ASL receiver
Listen Technologies	Battery charger station	LA-381-01	1	(12) Unit drop in charging tray

### Cable/Snakes/Adapters

Type	Quantity	Color Code	Notes
Whirlwind 3 Pin XLR Cable 25'	15		
Whirlwind 3 Pin XLR Cable 50'	10		
Whirlwind 3 Pin XLR Cable 100'	2		
Whirlwind NL4 Speakon Cable 25'	0		
Whirlwind NL4 Speakon Cable 50'	0		
Whirlwind Custom Snake 25'	1		Analog 16x4 XLR W/4 Ethernet Fan-Fan
Whirlwind Snake 10'	1		Analog 8x8 XLR Fan-Fan
Whirlwind 4 Pin Headset Cable 25'	4		
XLR Y Cable (1)M to (2)F	4		
1/8" – Dual 1/4"	2		
1/8" – TA4F	3		For Shure Bodypacks
Red MINI Patch Cable 2'	40		For use in AV patch bay
Ethernet Patch Cable 2'	30		For use in AV patch bay

## Miscellaneous

<b>Manufacture</b>	<b>Type</b>	<b>Model</b>	<b>Quantity</b>	<b>Notes</b>
<b>Focusrite</b>	Audio Interface	Scarlette 18I20	1	Portable
<b>Denon</b>	CD/BT/Media Player	DN-300Z	1	Portable
<b>Shure</b>	Lithium-Ion Rechargeable Battery	SB-900B	8	
<b>Shure</b>	Battery Charger	SBC200	4	Docking Charger
<b>Sony</b>	Headphones	MDR7506	1	Monitor Headphones
<b>Radial</b>	Passive DI Box	PRO-D1	2	
<b>Konig &amp; Meyer</b>	Tall Boom Stand	K&M 210/9	4	

# Projection Information

TBD

# Projection Inventory

TBD

# Draperies/Track Inventory

## Drape

Drape	Quantity	Height	Width	Fullness	Color	Notes
Main	1 pair	17'-10"	25'-0" ea	100%	Black	
Legs	4 pair	18'-0"	5'-6"	Flat	Black	
Border	4	4'	50'-0"	Flat	Black	
Traveler	1 pair	17'-10"	25'-0"ea	100%	Black	
Side Tabs	18	18'-0"	9'-0"	Flat	Black	
Scrim	1	18'-0"	48'-0"	Flat	Black	
Cyc	1	18'-0"	44'-0"	Flat	White	
Bounce	1	18'-0"	44'-0"	Flat	White	

## Track/Track Accessories

Manufacture	Type	Model	Quantity	Notes
ADC	U-Channel Track 14'	2800BL	2	
ADC	U-Channel Track 12'	2800BL	2	
ADC	Master Carriers	2852BL	2	
ADC	Carriers	2851BL	52	
ADC	End Stop	2809BL	2	
ADC	Lap Clamp	2807BL	1	
ADC	Splice Clamp	2824BL	2	
ADC	Hanging Clamp	2828BL	10	
ADC	Pipe Clamp	2815BL	10	
ADC	Live End Pully	2863BL	1	
ADC	Dead End Pully	2864BL	1	
ADC	Floor Block	2866	1	
ADC	Rubber Washer	2826	52	
ADC	Rubber Washer	2827	52	
ADC	Back Packs	2833BL	52	
	Center Pipe Support	CPS-1	1	

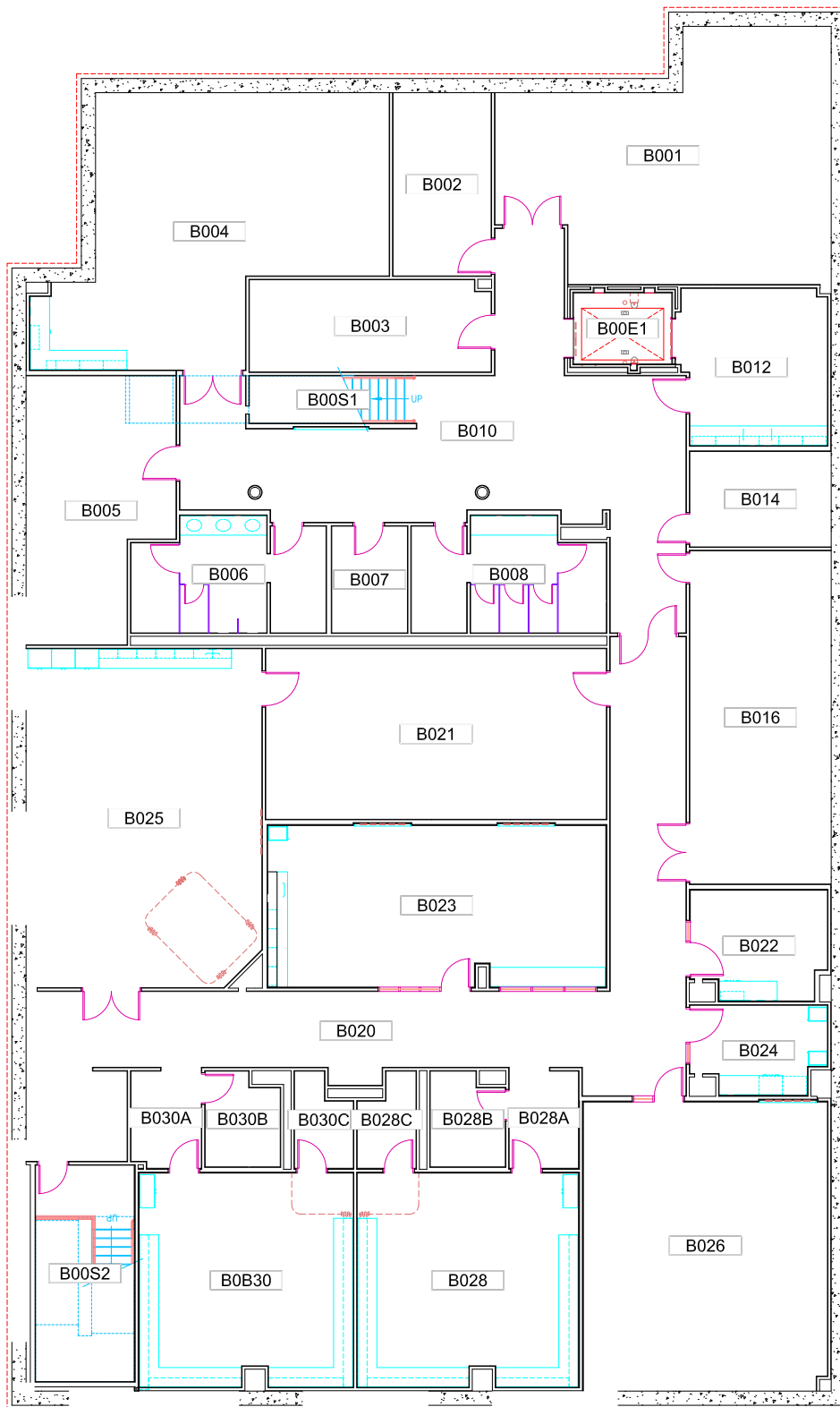
# Rigging Information

Location	Type	Load Rating	Total Load Rating	Notes
Pinrail	Pounds Per Linear Foot	250lbs	Varries by position	
Pinrail	Concentrated Point	500lbs	Varries by position	Repeatable per 2 linear feet
Catwalk Railing	Pounds Per Linear Foot	30lbs	Varries by position	
Catwalk Railing	Concentraited point	90lbs	Varries by position	Repeatable per 3 linear feet
Balcony Railing	Pounts Per Linear Foot	50lbs	Varries by position	
Balcony Railing	Concentrated Point	150lbs	Varries by position	Repeatable per 3 linear feet
High Steel	Concentrated Point	2000Lbs	8000Lbs	Max 4 simultaneous loads per beam, No closer than 4'-0" On Center 12,000 Lbs total over all beams Runs East/West, 4' & 12' from center
Unistrut Cat 5&6	Concentrated Point	530Lbs	530Lbs	1 point per Unistrut
Unistrut Cat 6&Wall	Concentrated Point	1100Lbs	1100Lbs	1 point per Unistrut

# Rigging Inventory

Manufacture	Type	Model	Quantity	Notes
CM	Loadestar Classic	½ Ton	12	C7 7 Pin Cable Connector, 3 Phase Power
CM	Loadestar Classic	¼ TON	4	Hubbel Twist Lock Connector, 120V Power
Motion Labs	Motor Controller	8 Way	1	L21-30 3 Phase Power
Motion Labs	Pendent	8 Way	1	
Motion Labs	Pendent Cable	50'	1	
Hubbell	Control Station (Pickle)	6	4	
Mountin Rigging	Motor Cable 16/7	75'	12	C7 7 Pin Cable Connector
Mountin Rigging	Motor Controller Power Cable	75'	1	L21-30 Cable Connector
XSF	5 Chord 12x12 Truss	10'	6	Black Powder Coated
XSF	5 Chord 12x12 Truss	8'	8	Black Powder Coated
Liftall	Steelflex	6'	24	Gakflex Round Sling
	Beam Clamp	1 Ton	12	1 Ton I-Beam Clamp
	Shackle	5/8	24	





**DRAWN OR REVISED BY:**  
KEVIN KEHOE

**DATE DRAWN OR REVISED:**  
03-11-21

**DRAWING NAME:**  
BASEMENT FLOOR PLAN

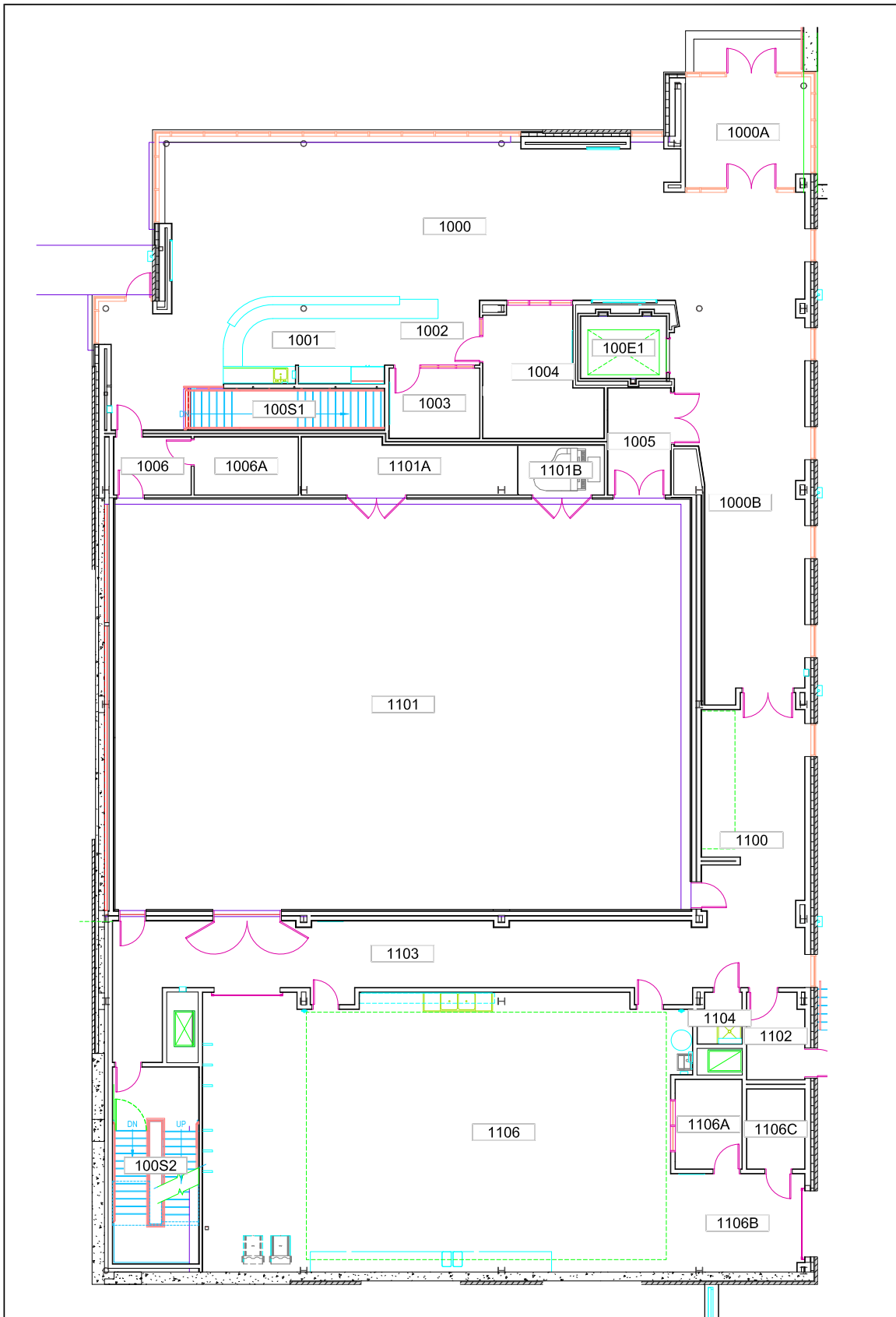
**DRAWING SCALE:**  
3/32" = 1'-0"

**BUILDING NAME:**  
SLOAN PERFORMING ARTS  
CENTER

**BUILDING NUMBER:**  
0009

**DRAWING LOCATION:**  
P:\SPACE\RC\0009 SLOAN PERFORMING ARTS CENTER\  
0009-B

PLANNING AND PROJECT MANAGEMENT



**DRAWN OR REVISED BY:**  
KEVIN KEHOE

**DATE DRAWN OR REVISED:**  
03-11-21

**DRAWING NAME:**  
FIRST FLOOR PLAN

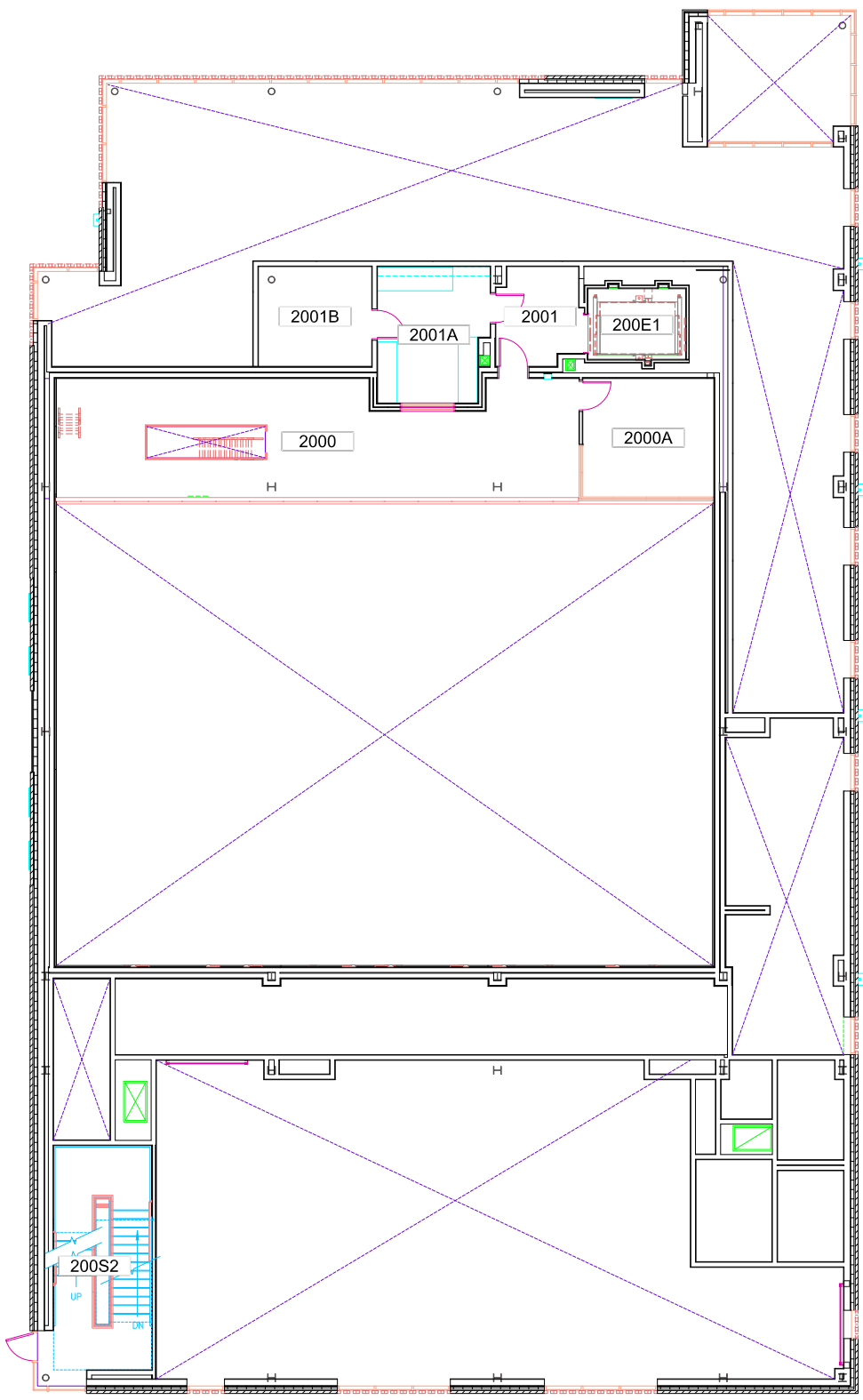
**DRAWING SCALE:**  
3/32" = 1'-0"

**BUILDING NAME:**  
SLOAN PERFORMING ARTS  
CENTER

**BUILDING NUMBER:**  
0009

**DRAWING LOCATION:**  
P:\SPACE\RC\0009 SLOAN PERFORMING ARTS CENTER\  
0009-01

PLANNING AND PROJECT MANAGEMENT



**DRAWN OR REVISED BY:**  
KEVIN KEHOE

**DATE DRAWN OR REVISED:**  
03-11-21

**DRAWING NAME:**  
SECOND FLOOR PLAN

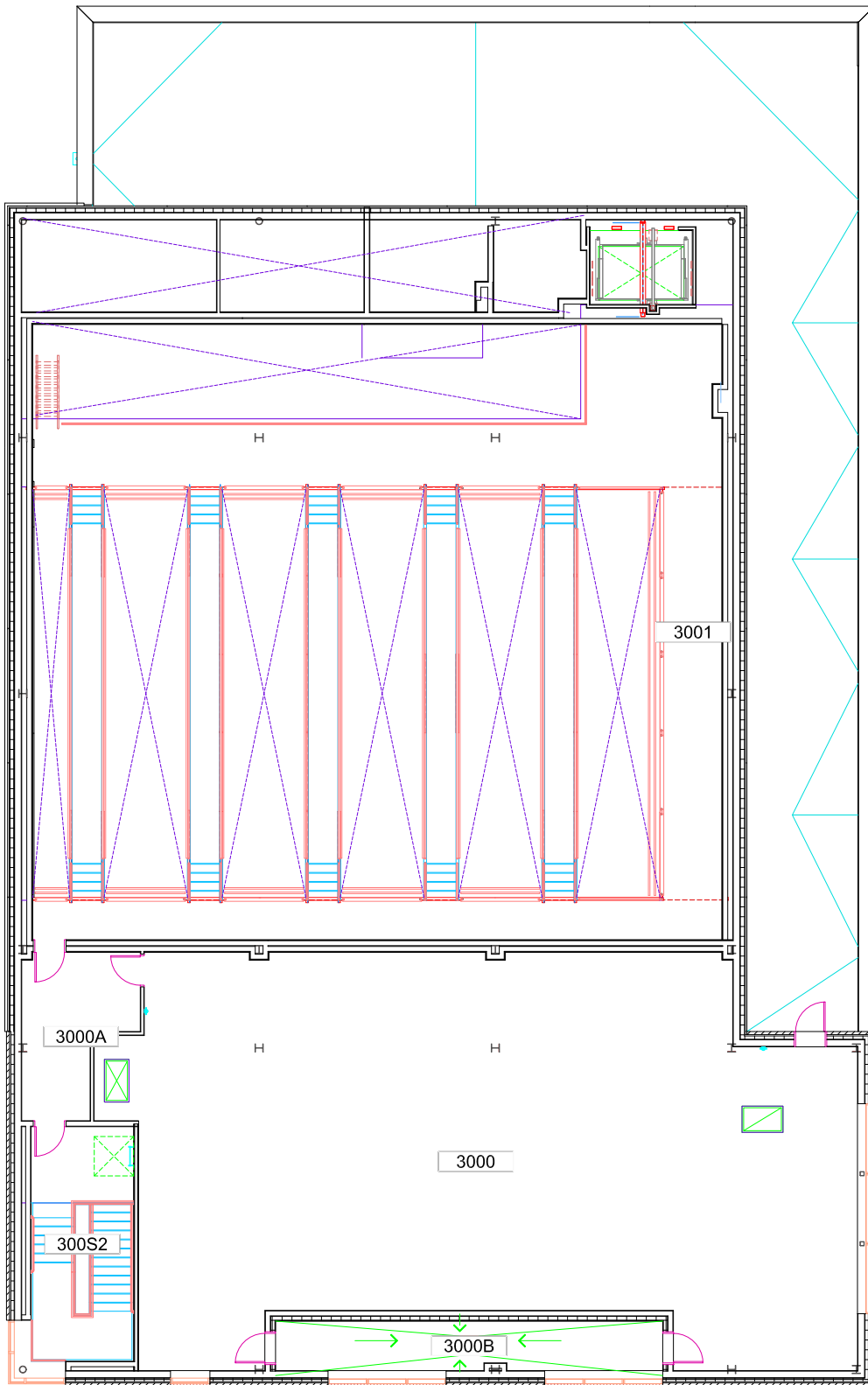
**DRAWING SCALE:**  
3/32" = 1'-0"

**BUILDING NAME:**  
SLOAN PERFORMING ARTS CENTER

**BUILDING NUMBER:**  
0009

**DRAWING LOCATION:**  
P:\SPACE\RC\0009 SLOAN PERFORMING ARTS CENTER\0009-02

PLANNING AND PROJECT MANAGEMENT



**DRAWN OR REVISED BY:**  
KEVIN KEHOE

**DATE DRAWN OR REVISED:**  
03-11-21

**DRAWING NAME:**  
THIRD FLOOR PLAN

**DRAWING SCALE:**  
3/32" = 1'-0"

**BUILDING NAME:**  
SLOAN PERFORMING ARTS CENTER

**BUILDING NUMBER:**  
0009

**DRAWING LOCATION:**  
P:\SPACE\RC\0009 SLOAN PERFORMING ARTS CENTER\0009-03

PLANNING AND PROJECT MANAGEMENT











