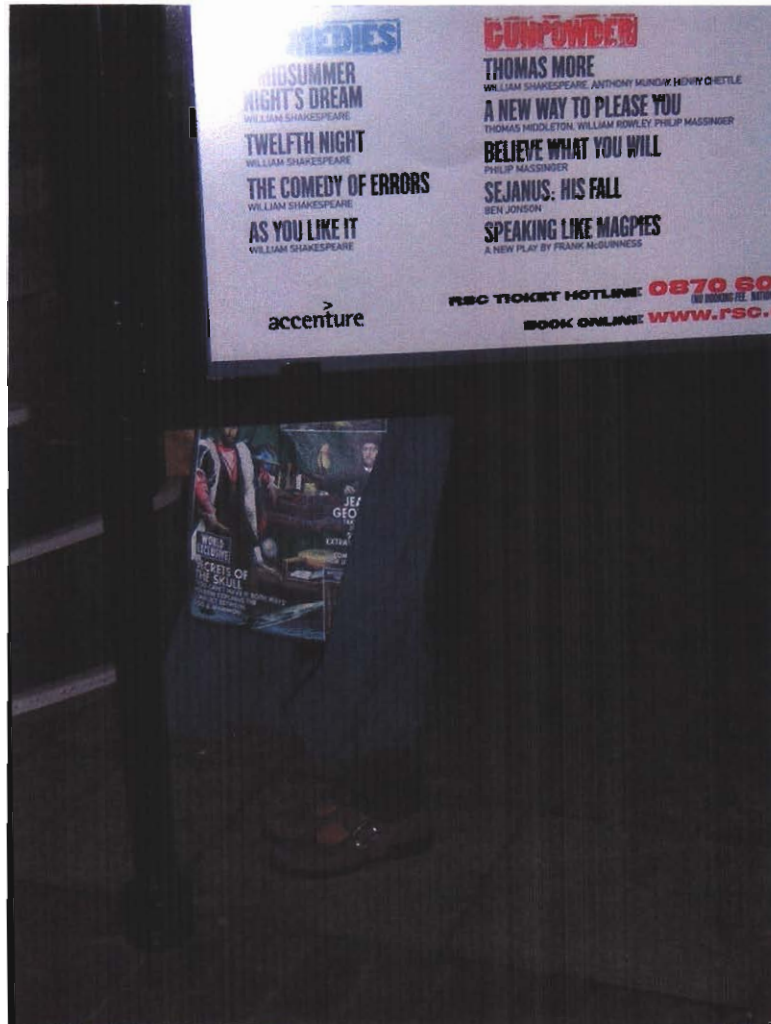




***The oldest thing I've ever laid eyes on**



***This unsuspecting wax statue has no idea what he's in for**



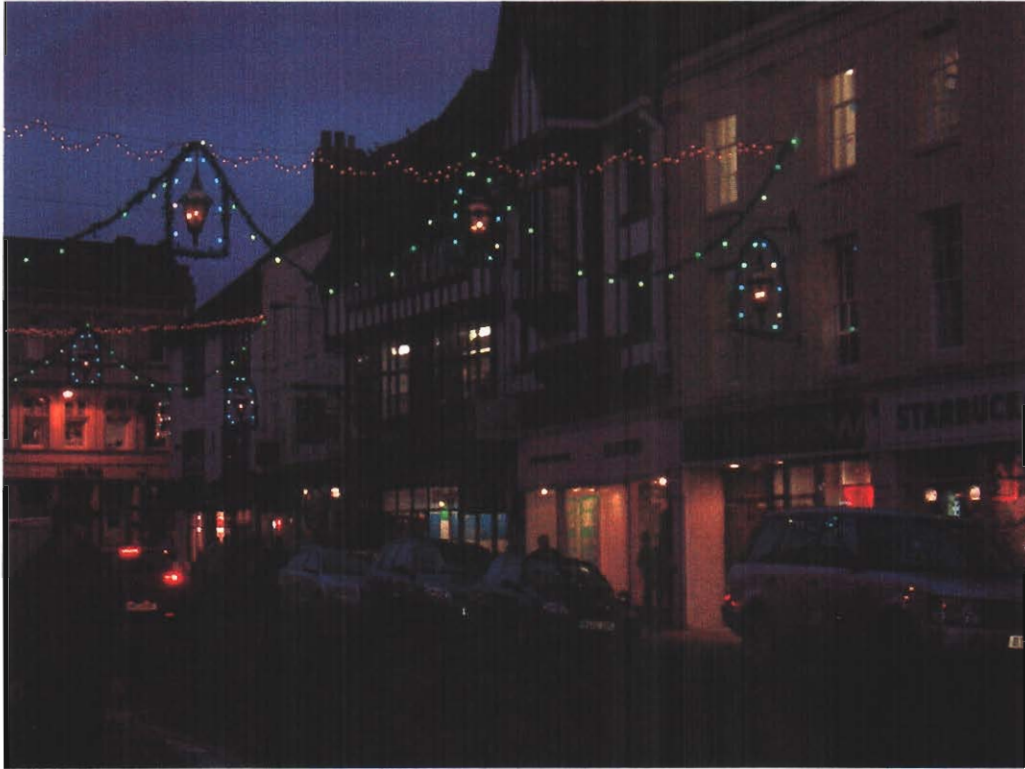
- *3 clues:**
- Late-night**
 - Moronic bus driver**
 - Aren't those Mrs. Peck's shoes?**



***Angi and Sara investing heavily in some stocks**



***Amanda, Sara, Gabby and the house of William Shakespeare**



***Stratford-upon-Avon**



***This was so beautiful my tears just wouldn't stop flowing**



***London Bridge**



***A leaf and radiation shoes**



***The sun setting on Warwick Castle**



***Amanda, thinking about the 8 hour flight home**



***Does anyone know those 3 in the back-right corner?**



***Big Ben, not on New Year's Eve, minus 10 million Londoner's**



***Guess how many?**