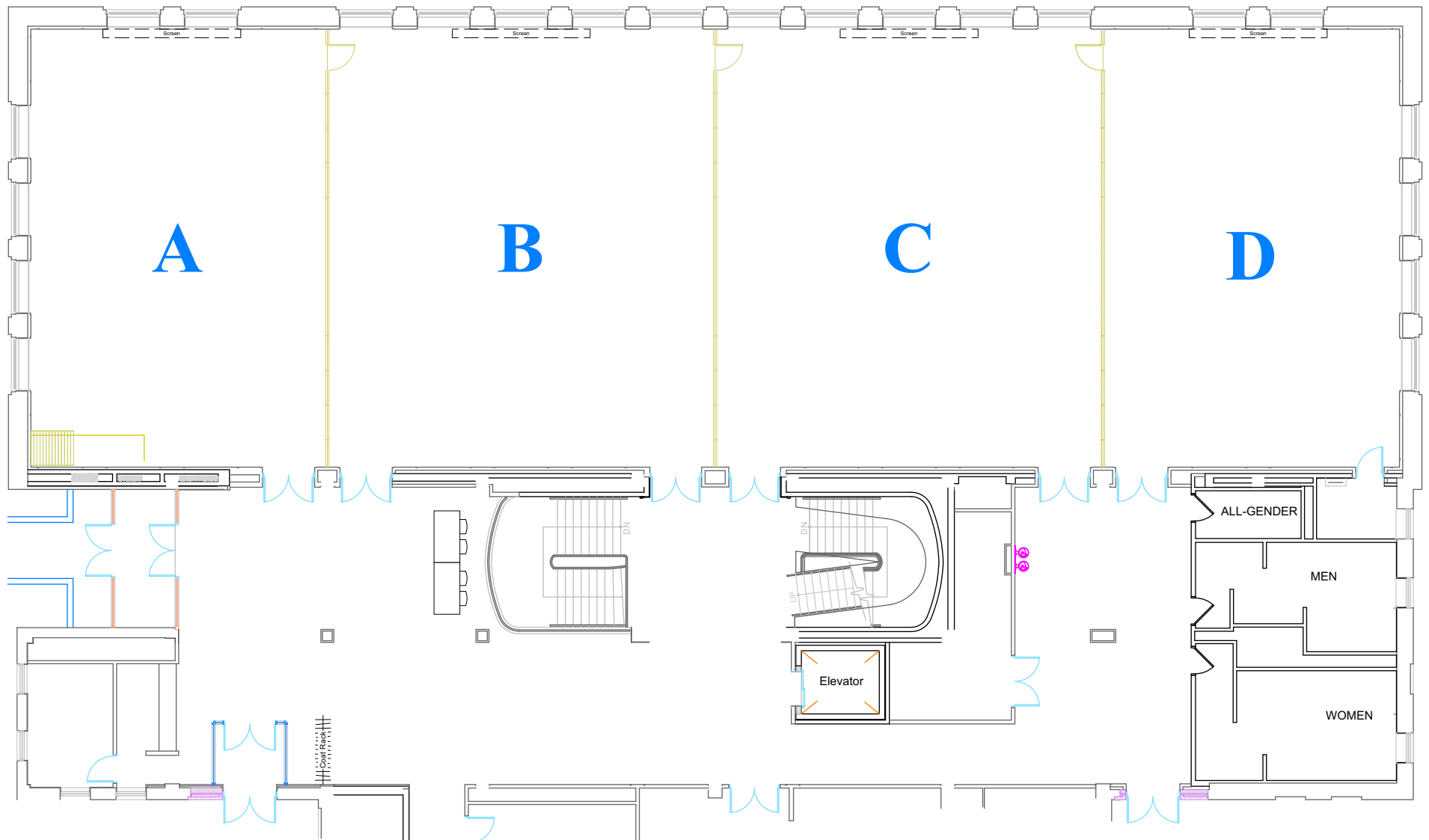


QUARTER BALLROOM STANDARD DIAGRAMS



Please note that Ballrooms "A" and "D" are smaller in width (34ft) than Ballrooms "B" and "C" (44ft).
Setups for Ballrooms "B" and "C" will **ONLY** fit in those locations, while "A" and "D" setups will fit in any partition.
"B" or "C" layouts will require 1/2 Ballroom reservations.

9 Rounds, 1 sided catering

9 Rounds, 2 sided catering

12 Rounds, 1 sided catering

10 Rounds, 1 sided catering
No lectern

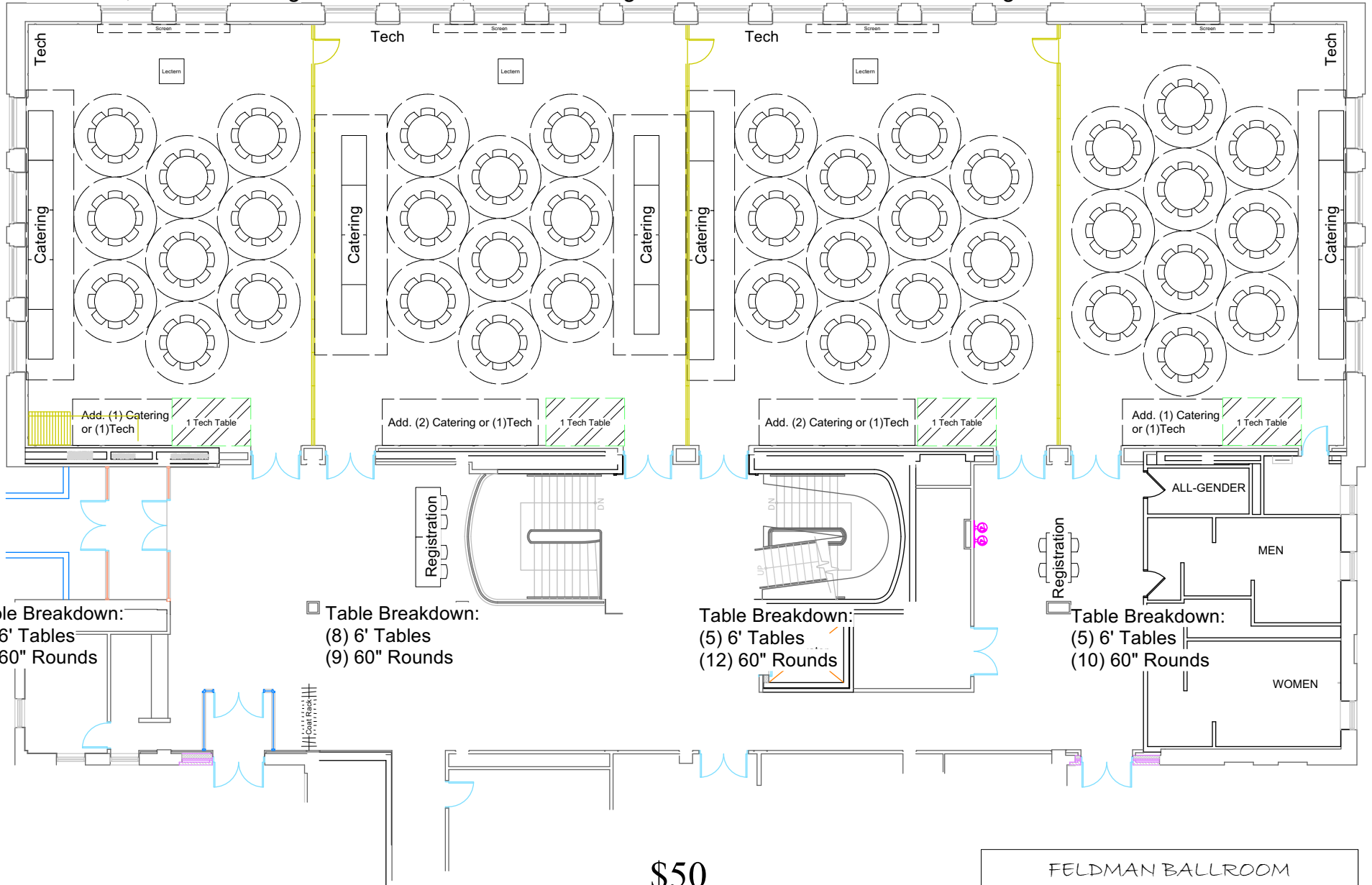


Table Breakdown:
 (5) 6' Tables
 (9) 60" Rounds

Table Breakdown:
 (8) 6' Tables
 (9) 60" Rounds

Table Breakdown:
 (5) 6' Tables
 (12) 60" Rounds

Table Breakdown:
 (5) 6' Tables
 (10) 60" Rounds

\$50

FELDMAN BALLROOM
1/4 Banquet
Event Date: XX/XX/XXXX
Drafted By:

8 Rounds, 1 sided catering

8 Rounds, 2 sided catering

10 Rounds, 1 sided catering

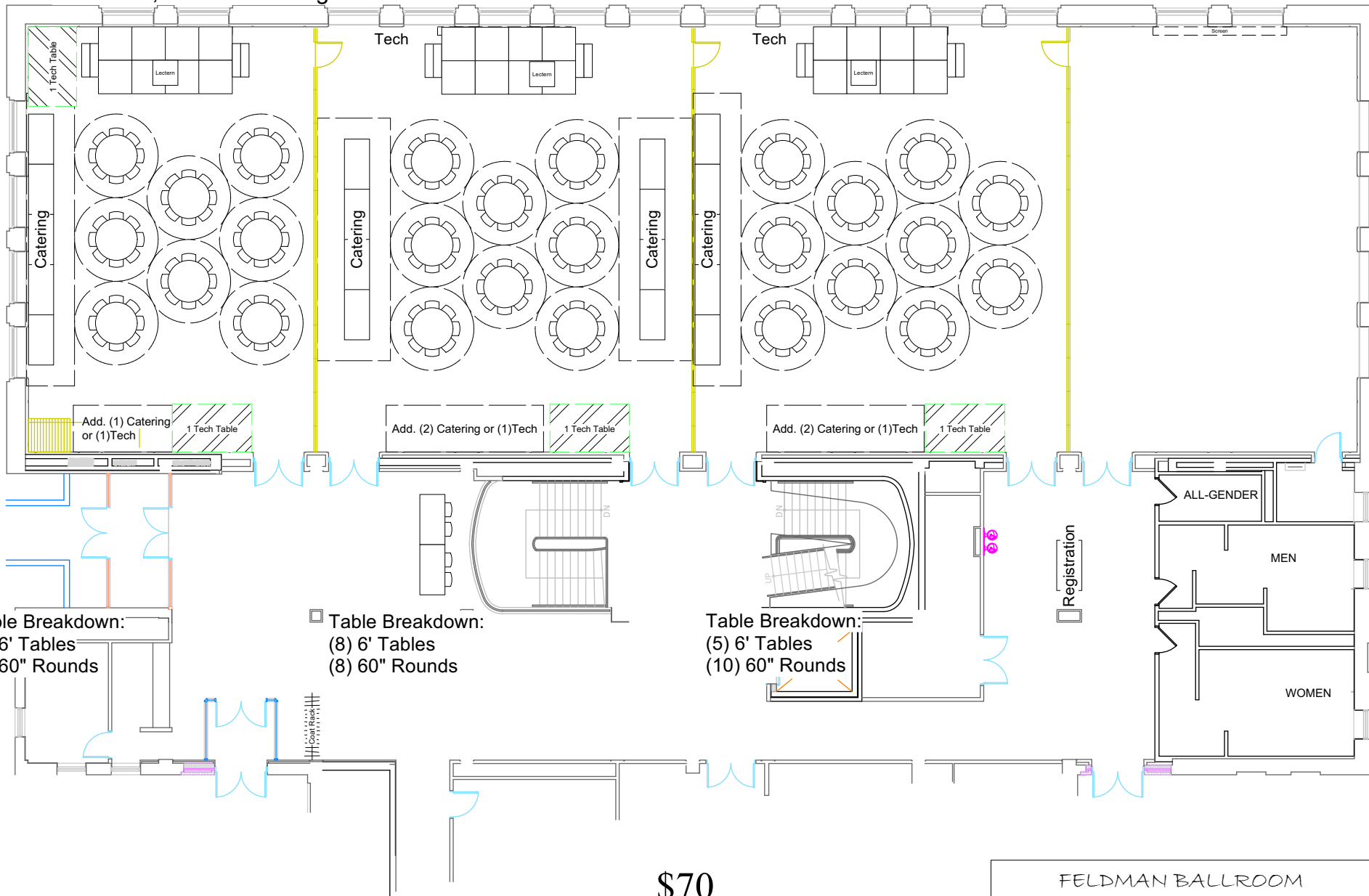


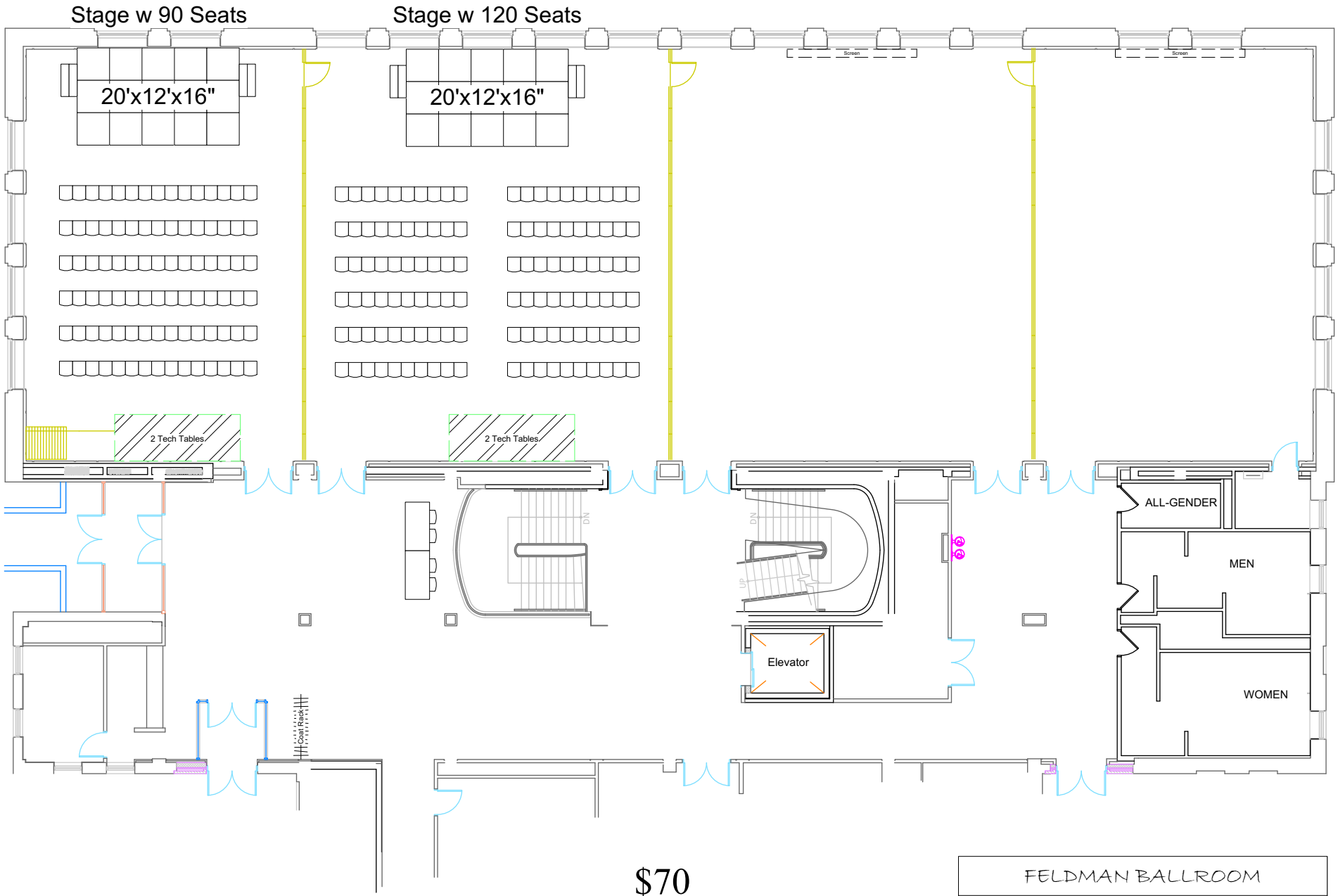
Table Breakdown:
 (5) 6' Tables
 (8) 60" Rounds

Table Breakdown:
 (8) 6' Tables
 (8) 60" Rounds

Table Breakdown:
 (5) 6' Tables
 (10) 60" Rounds

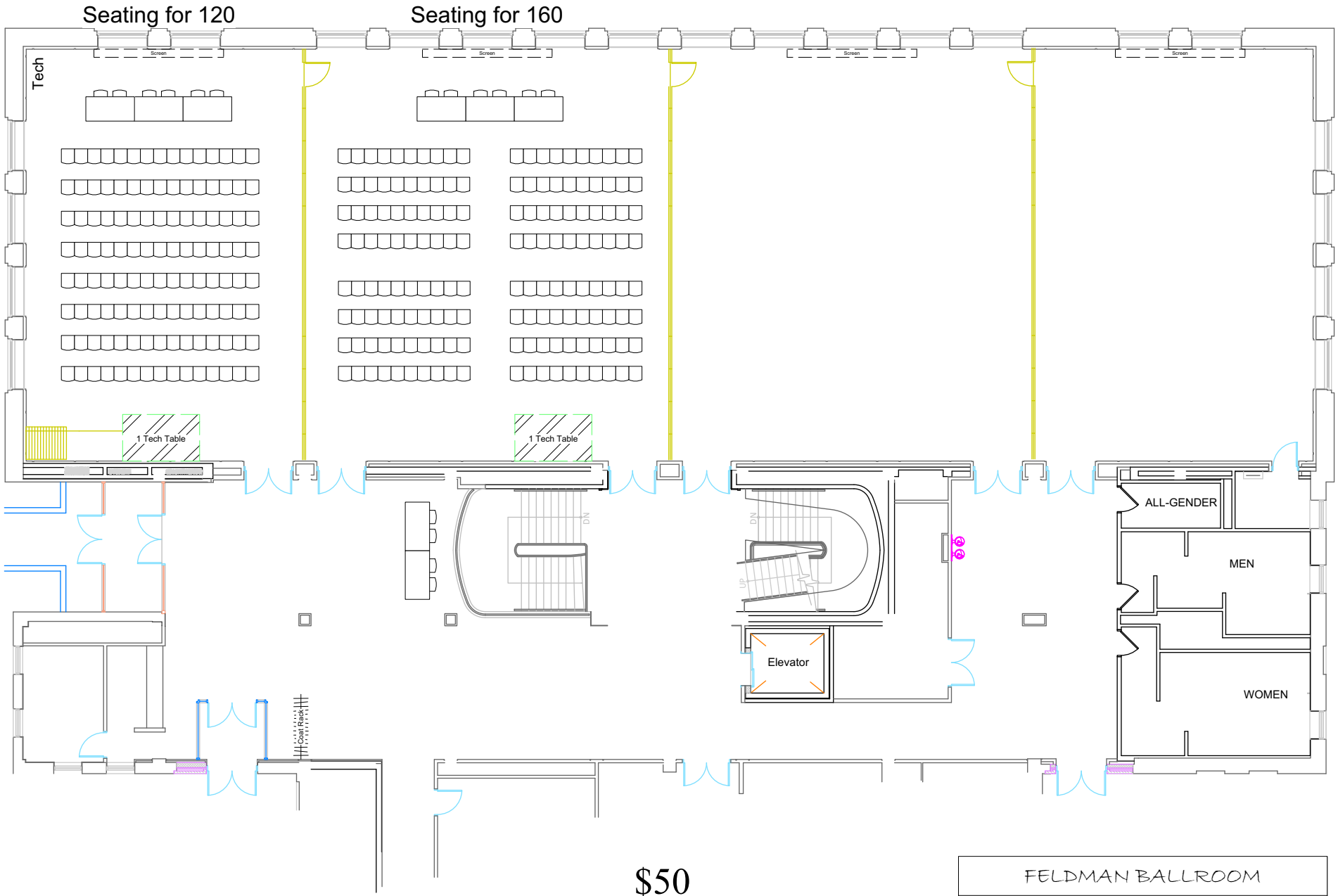
\$70

FELDMAN BALLROOM
1/4 Banquet w/ Staging
Event Date: XX/XX/XXXX
Drafted By:



\$70

FELDMAN BALLROOM
1/4 Show
Event Date: XX/XX/XXXX
Drafted By:

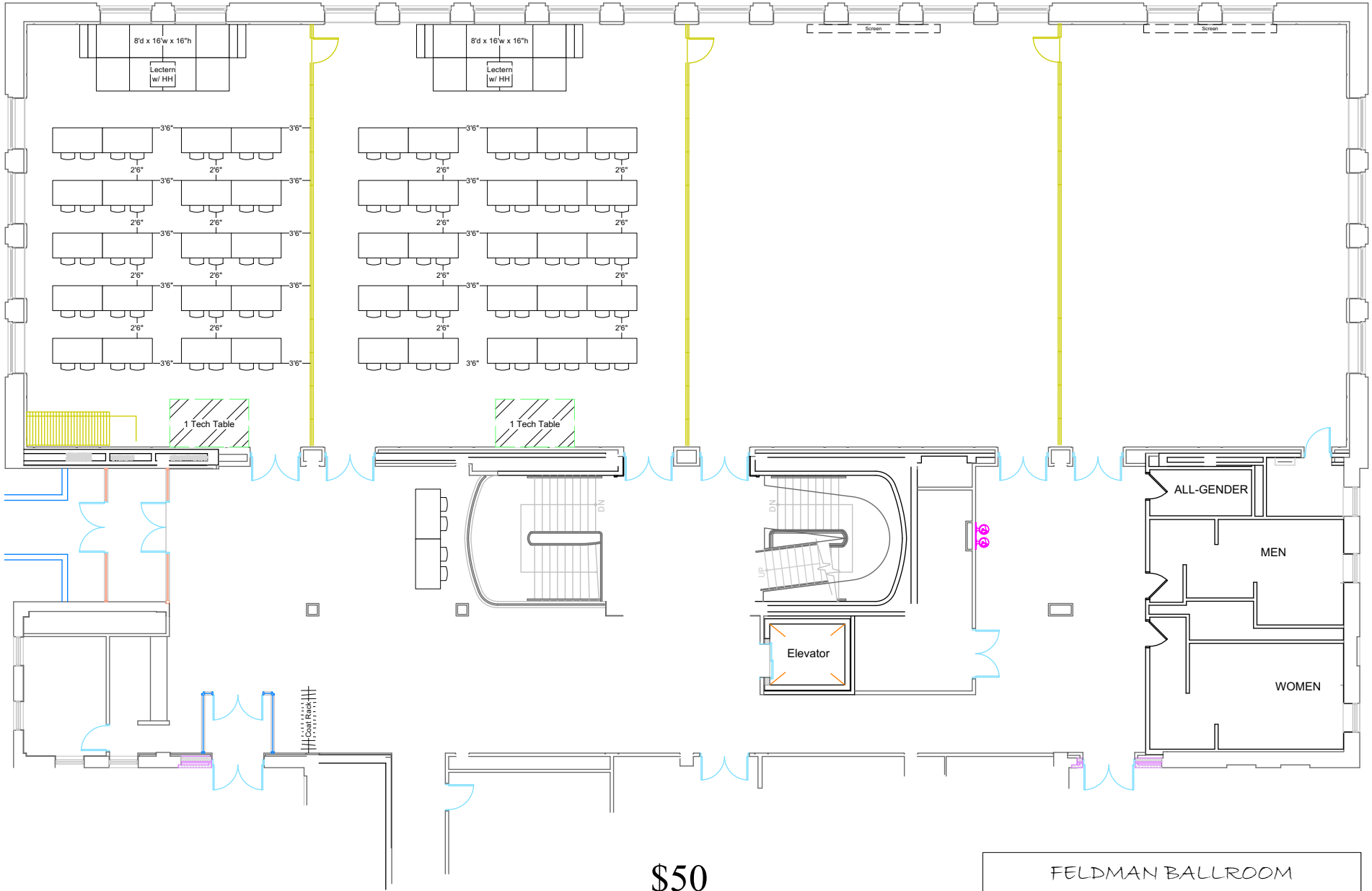


\$50

FELDMAN BALLROOM
1/4 Lecture
Event Date: XX/XX/XXXX
Drafted By:

Classroom for 40

Classroom for 50



\$50

FELDMAN BALLROOM
1/4 Classroom
Event Date: XX/XX/XXXX
Drafted By: