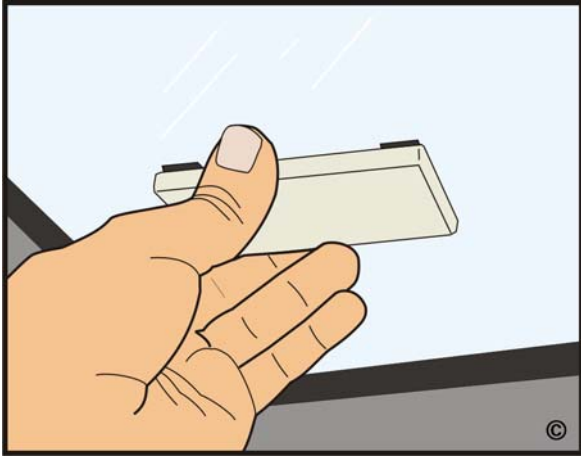


4. Press the tag firmly against the windshield for a few seconds. Your tag is ready to use.



### **Removing Your Tag**

If you want to remove the tag from your windshield, grip the tag along the top or bottom edge and pull slowly to remove the tag from the windshield.

**TRANSCORE.**

©2006 TC IP, Ltd. All rights reserved. TRANSCORE is a registered trademark of TC IP, Ltd., and is used under license. All other trademarks listed are the property of their respective owners. Contents are subject to change. Printed in the U.S.A.

Products covered by this document are protected by one or more of the following U.S. patents 4,739,328; 4,786,907; 4,816,839; 4,853,705; and foreign equivalent patents. Other patents pending.

411954

## **The Parking Access System and Installation Instructions for Your Parking Access Tag**

*Note: These instructions are for tags that are read by a reader system that is mounted at the driver's side of a vehicle.*



**PLEASE READ ALL OF THESE  
INSTRUCTIONS BEFORE  
INSTALLING THIS TAG**

**CONTINUED ON  
OTHER SIDE**

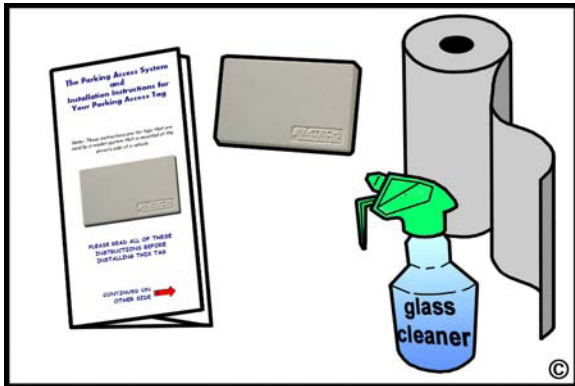




## READ THIS FIRST!

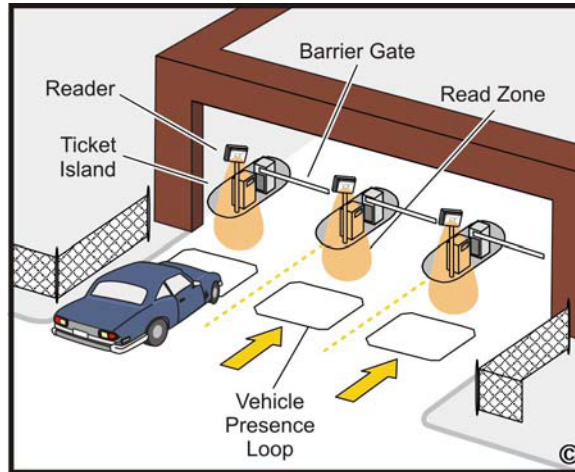
- ◆ If you already have another type of tag on your windshield, install the new parking access tag at least 5 cm (2 inches) away from the other tag.
- ◆ Do not wave the tag or hold it inside or outside of your vehicle as you approach the parking gate.
- ◆ Install the tag when the windshield's temperature is **above** 10C (50F). In colder climates, use your heater/defroster to warm the windshield before installing the tag. Also, wipe the windshield dry before installing the tag.

## Here's what you need...



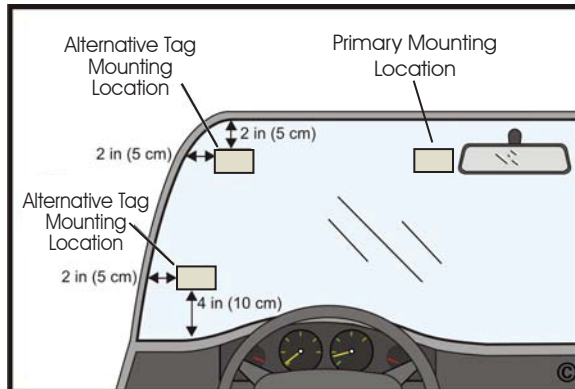
## How Does The Parking Access System Work?

The radio frequency identification, or RFID, access system detects the tag installed on your car's windshield when you drive up to and stop at a parking garage gate. A reader that is mounted on a pole at the driver's side of the lane automatically reads tag information contained in the tag. When the tag enters the antenna field, or read zone, it sends a coded message to the reader. The reader transmits an RF signal to the lane where the vehicle is passing through and raises the barrier gate.



## Choosing a Location for Your Tag

You should install your tag on the inside of your windshield by your rear-view mirror or as an alternate in the lower left corner or upper left corner out of the drivers line of sight.



## Installing Your Tag

Follow these simple instructions to install your tag. Your tag uses hook-and-loop material to adhere to your vehicle's windshield.

1. Clean and dry the windshield where you want to install the tag. You can use any commercial window cleaner.
2. The best location for your tag is at the lower left corner of the windshield, about four inches up from the metal at the bottom of your windshield and two inches in from the vehicle frame at the left side of the windshield. If you have an inspection or vehicle sticker in that area of your windshield, you can install your tag at the upper left corner.
3. Once you have cleaned the windshield area where you want to install the tag, peel off the barrier on both hook-and-loop strips on the back of the tag.

