

Annual Report to the Faculty Senate

September 4, 2007

Slide 1

Arts, Sciences, and Engineering Fall 1990 to Fall 2007

Entering Year	1990	1995	2000	2005	2006	2007
Number of Applicants	7,267	8,385	10,082	11,293	11,332	11,678
Percent Offered	63.8%	63.3%	50.4%	47.6%	45.3%	40.4%
Entered	1,064	1,085	930	997	1,102	1,050
Yield Rate	23.0%	20.5%	18.3%	18.5%	21.5%	22.2%
Average High School GPA	3.22	3.18	3.52	3.56	3.59	3.64
Re-centered Mean SAT	1125	1230	1315	1304	1312	1314
Geographic Distribution						
Rochester Area	13%	13%	13%	13%	12%	9%
Remainder of NY State	38%	44%	30%	34%	37%	34%
Out of State	49%	43%	57%	53%	51%	57%

Slide 2

In the Headlines...

January 12, 2007 University Scientists Make *Discover* Magazine's Top 100 List



February 21, 2007 Simon School Ranks 22nd on Fortune's List of Best Business Schools for Getting Hired

March 29, 2007 URM C Announces New Clinical and Translational Sciences Initiative



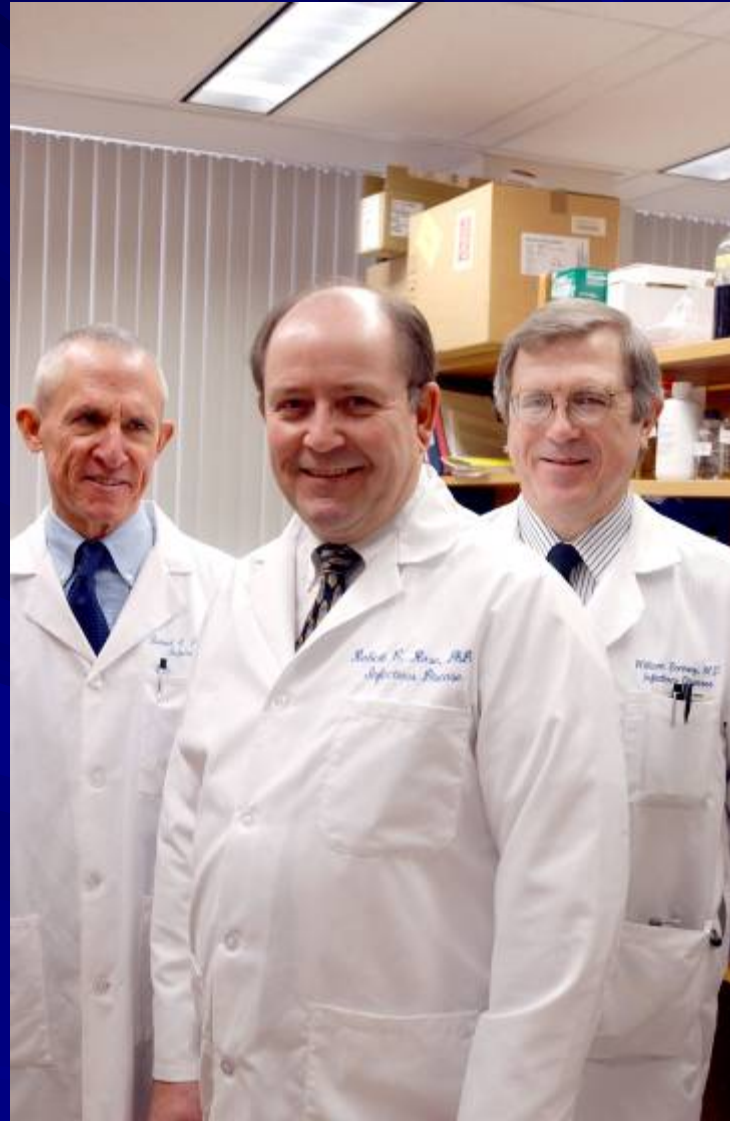
April 2, 2007 \$26 Million NIH Grant to Establish New Flu/Bird Flu Center of Excellence

June 27, 2007 City Apartments for University of Rochester Begin Construction



August 13, 2007 Eastman School Selected as 'Hottest Music School' in Kaplan/Newsweek College Guide

Slide 3



**Richard Reichman, M.D., and Robert Rose,
Ph.D., William Bonnez, M.D.**

School of Nursing

	Entered 2003		Entered 2004		Entered 2005		Entered 2006		Entered 2007	
	MS	Acc*	MS	Acc	MS	Acc	MS	Acc	MS	Acc
Number of Applicants	76	140	84	151	96	210	116	253	90	270
Number of Offers	65	86	78	111	77	134	80	199	73	158
Selectivity Rate	86%	61%	93%	74%	80%	63%	69%	79%	81%	59%
Total Entered	55	48	74	58	71	61	60	111	64	89
Yield Rate	85%	56%	95%	52%	92%	46%	75%	56%	88%	56%

*Acc = Accelerated Bachelor's and Master's programs

William E. Simon Graduate School of Business Administration

MBA Programs	Sept '02 & Jan '03 PT- all of '02		Sept '03 & Jan '04 PT- all of '03		Sept '04 & Jan '05 PT- all of '04		Sept '05 & Jan '06 PT- all of '05		Sept '06 & Jan '07 PT- all of '06		Sept '07 & Jan '08 PT- all of '07*	
	FT	PT	FT	PT	FT	PT	FT	PT	FT	PT	FT	PT
Number of Applicants	1737	80	1252	63	875	85	714	70	814	122	800	108
Selectivity Rate	29%	70%	38%	62%	39%	72%	40%	73%	41%	67%	42%	48%
Total Entered	217	51	222	36	145	60	119	50	150	80	161	50
Yield Rate	43%	91%	47%	92%	42%	98%	41%	98%	45%	98%	48%	96%
GMAT	647	590	647	590	664	586	659	565	667	557	674	584
GPA	3.21	3.09	3.2	3.24	3.4	3.23	3.45	3.27	3.46	3.25	3.51	3.39

* Sept. 07/Jan. 08/PT '07 data as of 8/22/07 (students are not yet enrolled); All other years are final enrollment figures

Slide 6 **The Margaret Warner Graduate School of
Education and Human Development**

	Entered 2002		Entered 2003		Entered 2004		Entered 2005		Entered 2006		Entered 2007	
	MS	Doc	MS	Doc	MS	Doc	MS	Doc	MS	Doc	MS	Doc
Number of Applicants	180	24	302	46	286	36	304	37	319	40	278	150
Number of Offers	153	20	243	25	225	26	253	20	256	30	221	120
Selectivity Rate	85%	83%	80%	54%	79%	72%	83%	54%	80%	75%	79%	80%
Total Entered	101	17	146	18	139	12	161	14	184	20	128	86
Yield Rate	66%	85%	60%	72%	62%	46%	64%	70%	72%	67%	60%	72%

Eastman School of Music

	Entered 2003		Entered 2004		Entered 2005		Entered 2006		Entered 2007	
	UGrad	Grad	UGrad	Grad	UGrad	Grad	UGrad	Grad	UGrad	Grad
Number of Applicants	896	783	971	842	1009	854	997	965	1093	999
Number of Offers	289	247	268	252	243	204	257	216	283	222
Selectivity	32.3%	31.5%	27.6%	29.9%	24.0%	24.2%	25.8%	22.3%	25.9%	22.2%
Total Entered	148	146	134	165	129	126	136	145	147	136
Yield	51.2%	59.1%	50%	65.5%	53.1%	61.8%	52.9%	67.1%	51.9%	61.3%

School of Medicine and Dentistry

	Entered 2002		Entered 2003		Entered 2004		Entered 2005		Entered 2006		Entered 2007	
	PhD	MD	PhD	MD	PhD	MD	PhD	MD	PhD	MD	PhD	MD
Number of Applicants	706	3,845	740	3,969	523	3,975	527	4,243	531	4,233	500	4353
Number of Offers	165	281	186	275	164	272	163	260	135	281	144	282
Selectivity Rate	23%	7.3%	25%	6.9%	31%	6.8%	31%	6.1%	25%	6.6%	29%	6.5%
Total Entered	89	100	94	100	87	100	81	100	67	101	76	101
Yield Rate	54%	36.2%	51%	36.2%	53%	36.8%	50%	38.4%	50%	35.9%	53%	35.8%
Mean MCAT	n/a	10.3	n/a	10.4	n/a	10.5	n/a	10.7	n/a	10.7	n/a	10.6
Mean GPA	n/a	3.66	n/a	3.67	n/a	3.70	n/a	3.68	n/a	3.66	n/a	3.63

Instructional Faculty Size

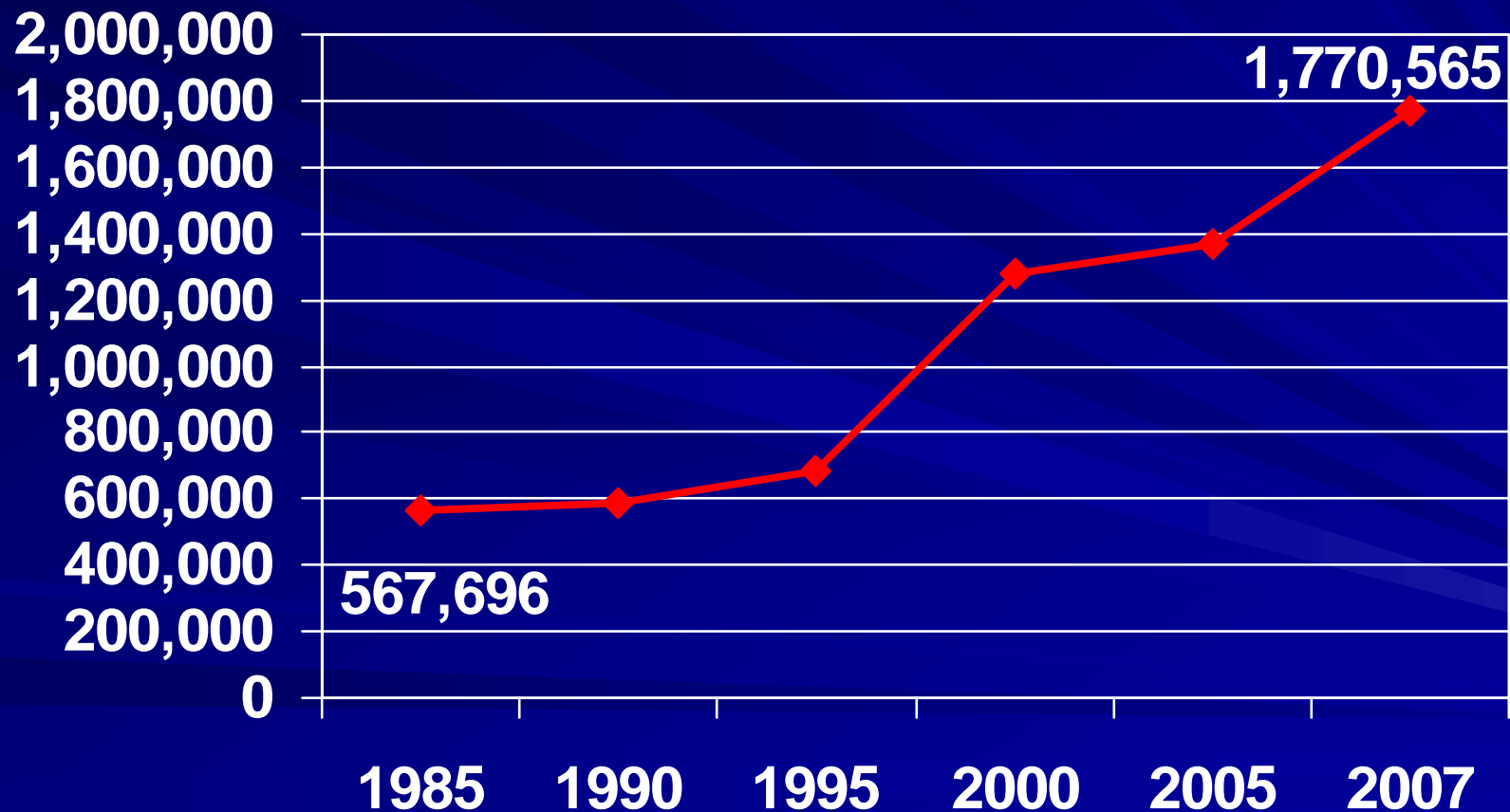
	Faculty on 7/1/06	Hired: 7/1/06 – 6/30/07	Departures: 7/1/06 – 6/30/07	Net Change
Arts, Sciences, and Engineering	346	36	15	+21
Eastman	99	1	1	0
SMD	878	100	73	+27
SON	34	10	6	+4
Simon	50	5	6	-1
Warner	29	4	2	+2

+53

Active, full-time faculty with major (at least 50%) assignment of instruction—including research time.

University of Rochester Endowment 1985 to 2007

—◆— Market Value (000s)





Ralph Kuncel

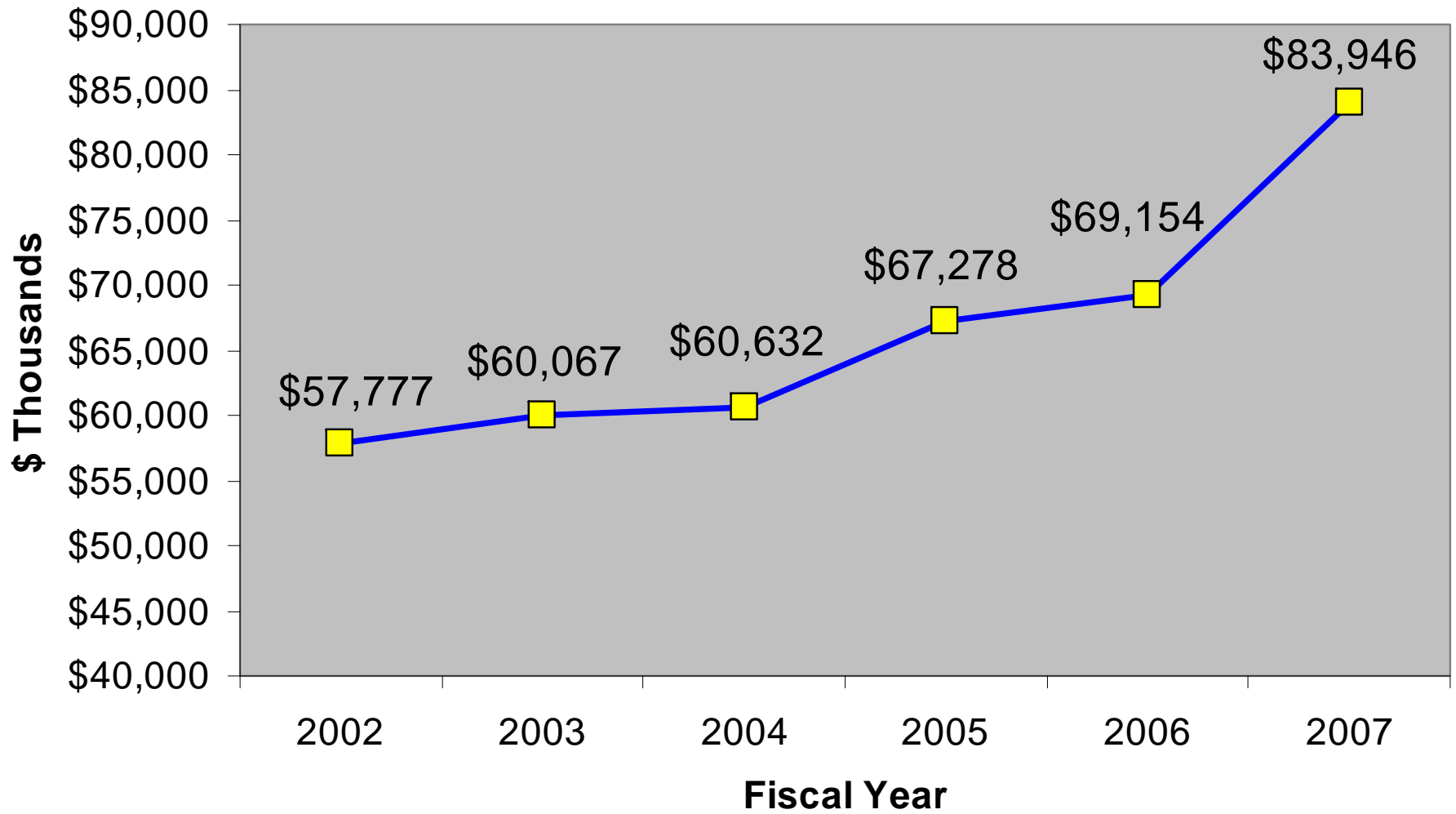
Provost and Executive Vice President



Doug Lowry

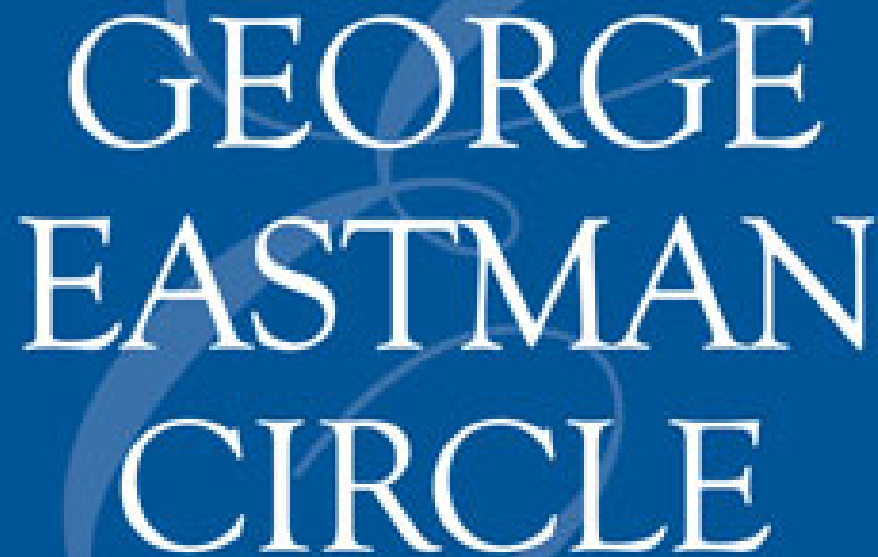
Dean of the Eastman School of Music

5-Year Historic Total Cash Performance



Advancement

5 Year Historical Cash Performance by School & Unit						
<i>(\$Thousands)</i>						
Total Cash	Fiscal 2002	Fiscal 2003	Fiscal 2004	Fiscal 2005	Fiscal 2006	Fiscal 2007
COLLEGE	\$17,100	\$17,109	\$13,524	\$18,666	\$21,635	\$31,034
WARNER	\$616	\$357	\$320	\$482	\$1,228	\$3,894
SIMON	\$2,396	\$3,088	\$1,304	\$3,348	\$2,279	\$3,058
EASTMAN	\$6,252	\$3,396	\$4,380	\$3,821	\$3,900	\$2,244
MAG	\$641	\$1,088	\$2,680	\$1,144	\$2,000	\$2,581
MED CTR	\$30,772	\$34,049	\$38,424	\$39,817	\$38,112	\$41,135
TOTAL	\$57,777	\$60,067*	\$60,632	\$67,278	\$69,154	\$83,946
* Total for Fiscal 2003 includes \$980,000 in "University Other"						



GEORGE
EASTMAN
CIRCLE

UNIVERSITY OF

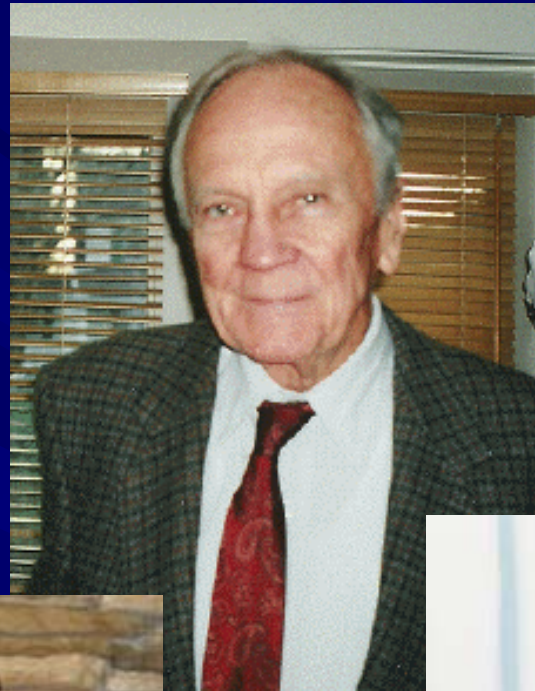
ROCHESTER

Slide 15

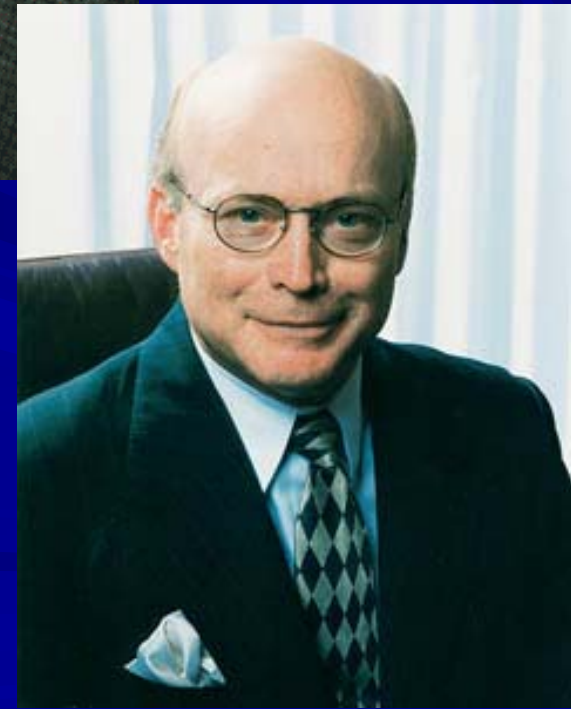
Arunas Chesonis



Lionel McKenzie



Michael & Diane Jones



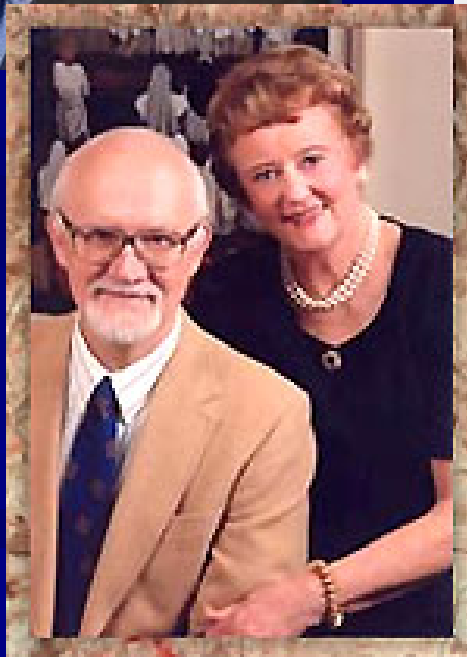
Jack Rowe

Slide 16

Rick Aab



Jane & Alan Handler



Lyman & Adele Wynne

Internal Communications

Weekly Buzz

A newsletter for all undergraduates at the University of Rochester

Sept. 2, 2007

News & Updates | Event Highlights | Sports | Rochester in the News

News & Updates

Free Music and Movies
Access more than 3 million tracks, music videos, and films by signing up for a free Ruckus account. [Read more...](#)


Newsweek Confirms, Eastman Is Hot
Eastman School of Music has been named the "Hottest Music School" in the 2008 Kaplan/Newsweek "How to Get into College" guide. [Read more...](#)

Bus Schedules
View schedules and maps for the new student bus service. [Read more...](#)

Yellowjacket Weekend
Don't miss the fun. **Friday:** Activities Fair, Comedy Central's Mike Birbiglia, grand opening of the Hive Game Room, and screening of *Spider-Man 3*. **Saturday:** carnival, luau, live reggae, screening of *Hot Fuzz*, and late-night bowling. Get your coupon for a free "Feel the Sting" t-shirt. [Read more...](#)

Eastman Students: Fulbright Info.
Interested in applying for a Fulbright Grant? Attend an information session on Friday, Sept. 7, at 5 p.m. in Miller Center 320 to learn more.

Calling All Actors
Audition for the International Theatre Program's first fall production on Friday, Sept. 7, at 7 p.m. and Saturday, Sept. 8, at 2 p.m. in Todd Theatre on the River Campus. No need to prepare and no prior experience required.



Weather

Today:
Sunny, High 82°

This week's forecast:

Submissions

Submit news or events for Weekly Buzz, or leave feedback.

Did You Know?

The University's Political Science Department was recently ranked fourth in [two national studies](#) that measure the quality of graduate

<http://www.rochester.edu/weeklybuzz>



UNIVERSITY OF ROCHESTER

Currents

Friday, September 4, 2007 www.rochester.edu/currents Vol. 15, No. 11

CELEBRATE THE BIG UNVEILING

As if we didn't already know... Eastman's hot

Big school prizes hot music list. The 2008 Kaplan/Newsweek "How to Get into College" guide has named the Eastman School the "Hottest Music School," selecting it as one of 25 nationally ranked four-year top academic programs and also giving it a "top tier" "measure of name recognition and ranking list status."

The Kaplan/Newsweek guide rated Eastman students' ability to take additional education classes at the College of Arts, Sciences, and Engineering and to participate in Eastman's faculty-led Music Leadership. The guide also noted that applications to Eastman were up 50 percent this year, more than the national average.

"This selection recognizes the countless and countless opportunities Eastman students have for an exceptional career and education."

See "Currents" page 2

Chiverton stepping down as nursing dean

Francis Chiverton will step down as dean of the School of Nursing at the end of the academic year. A search committee, chaired by Professor Ralph Rowell, is being formed to choose her successor.

"She's been an dean of the School of Nursing, only representing a great commitment to teaching excellence at the college and the state has helped make the future of health care in Rochester. Her 'bold and beyond' said Heather O'Neil, Medical Center CEO, is an encouragement to August 25. Her creative approach to improving nursing practice, dedication to supporting entrepreneurship in the field, and keen ability to get along, succeed and appreciate the growth here are the School of Nursing in the step to a new level needed for success."

Chiverton's eight-year tenure as dean has been marked by a number of changes and innovations. Guided by a vision to create around teaching excellence and scholarly excellence, the school has had new programs such as a one-year accelerated program for students. That innovation has increased by more than 500 students, the school has been given significantly, 2007 the school's budget has nearly doubled. Last year the school completed its 100th anniversary and had a major program - also here in its history.

Chiverton is a well-known figure in the health care field who has brought her own professional background. She is looking forward to taking a more active role in her community.

See "Currents" page 2

Seligman begins treatment for curable cancer

By Jerry Lawler

President Seligman is undergoing chemotherapy to treat a curable form of lymphoma. He disclosed his cancer diagnosis and his intent to operate in a message to the University community available online at www.rochester.edu/president, and in a press conference on August 23.

"When you live here the most common life choices, like golf, tennis, and I have often been confident as we've learned more about the treatment and prognosis. He's been a great leader and I'm sure he'll be back where the fans look to study on the optimistic side that you find."

He also outlined his treatment regimen, which will include three or four cycles of chemotherapy followed by radiation. He was joined by Richard Fisher, director of the Wilson Cancer Center and a faculty member in bioengineering, and by Board of Trustees Chairman G. Robert White Jr. "Dr. Fisher will oversee Seligman's treatment."

Seligman was first diagnosed with cancer in late June but it is not until the end of the year that he will begin his treatment. He is currently in a 10 percent of his peak.

See "Currents" page 2

Next issue

The next issue of Currents publishes September 11. Send submissions by September 11 to currents@rochester.edu.

University of the Roman Republic
147 Middle Hill
Rochester, NY 14627

<http://www.rochester.edu/currents>




@Rochester

<http://www.rochester.edu/@rochester>

September 2007						
S	M	T	W	T	F	S
26	27	28	29	30	31	1
2	3	4	5	6	7	8
9	10	11	12	13	14	15
16	17	18	19	20	21	22
23	24	25	26	27	28	29
30	1	2	3	4	5	6

Date Range
 9/4/07 to 9/10/07

Keywords

-  [Calendar Home](#)
-  [Submit/Update Event](#)
-  [RSS Feed](#)

- Browse by Category**
- [Arts and Entertainment](#)
 - [Athletics](#)
 - [Ceremonies and Traditions](#)
 - [Health and Wellness](#)
 - [Information Sessions](#)
 - [Lectures and Talks](#)
 - [Religious Services](#)
 - [Symposia and Conferences](#)

- About this Site**
- [Frequently Asked Questions](#)
 - [Contact the Editor](#)

- Academic Calendars**
- [The College](#)
 - [Eastman School of Music](#)
 - [School of Medicine and](#)

Events Calendar



Editor's Pick

Logo Launch Celebration

Everyone is invited to mark this special occasion. Featuring music from the college Marching Pep Band and a capella groups. Giveaways and more!

Wednesday, September 5 at noon
Front steps of Wilson Commons

Events This Week

Tuesday, September 4, 2007

- All Day [College, Eastman School: Classes Begin](#)
- 9:00 am [Poets at the University: Three Generations](#)
Rush Rhees Library, Hilfiker Gallery
- [Printing the Classical Text](#)
Rush Rhees Library, Seward Room
- [Ex Libris: Bookplates from the Collections](#)
Rush Rhees Library, Seward Room
- 10:00 am [Symphony Orchestra Auditions](#)
Strong Auditorium
- 11:00 am [School of Nursing Convocation](#)
School of Nursing, Auditorium, Loretta C. Ford Education Wing
- 3:30 pm [Women's Glee Club Auditions](#)
Todd Union 108
- 4:45 pm [Newman Rosary Group](#)
Interfaith Chapel Commons Room
- 5:00 pm [Newman Night Catholic Mass](#)
Interfaith Chapel Commons Room

Rochester

UNIVERSITY OF ROCHESTER

Review

SEPTEMBER–OCTOBER 2007

Celebrating Our New Look

The University launches
its new logo—32

Leading Economic Indicators

Economics marks 50 years
of influential work—28

Mr. Secretary

Donald Winter '69 finds his 'call to service'
as the Navy's top civilian leader—38





UNIVERSITY of
ROCHESTER



The new Blue





SIMON
GRADUATE SCHOOL
OF BUSINESS

UNIVERSITY *of* ROCHESTER



SCHOOL OF
**MEDICINE &
DENTISTRY**

UNIVERSITY *of* ROCHESTER
MEDICAL CENTER



EASTMAN
SCHOOL OF MUSIC

UNIVERSITY *of* ROCHESTER



SCHOOL OF
NURSING

UNIVERSITY *of* ROCHESTER
MEDICAL CENTER



WARNER
SCHOOL OF EDUCATION

UNIVERSITY *of* ROCHESTER



Diversity

- School-based Faculty Diversity Officers
- Faculty Development News
- Improved Applicant Data Collection Techniques
- Dual Career Program
- Faculty Search Training for Deans and Faculty Diversity Officers

Special Opportunities Fund

	Fiscal Year 2007		Fiscal Year 2008 (commitments to date)	
	Number of new commitments	Number of continuing commitments	Number of new commitments	Number of continuing commitments
Arts, Sciences, and Engineering	0	3	2 (1 new hire, 1 retention)	1
Eastman School of Music	0	0	1 (retention)	0
School of Medicine and Dentistry	0	2	4 (new hires)	2
School of Nursing	0	0	2 (1 new hire, 1 retention)	0
Simon School of Business	0	0	0	0
Warner School of Education	0	2	1 (new hire)	1
TOTAL	0	7	10	4

Diversity on the Homepage

University of Rochester

MELIORA · Ever Better

SEARCH EMERGENCY CALENDAR DIRECTORY A-Z CONTACT GIVING TEXT

- Schools and Colleges ▶
- About Us ▶
 - Fast Facts
 - Diversity at the University**
 - Office of the President
 - Office of the Provost
- Admissions
- Alumni and Friends
- Athletics
- Graduate Studies
- Maps and Directions
- Information Technology
- Libraries and Museums
- Medicine
- Research
- Student Life
- Working at the University



LATEST NEWS FROM ROCHESTER

Meliora Weekend: Online registration open

Music ensembles: Glee clubs, orchestras welcome public participation

Obesity: Less invasive surgery shows results in early study

Currents: Student Edition

Welcome Class of 2011!

Prenatal stress: Study says stress affects infants' sleep

Ruckus: New online music service free for students

Child mental health: New grant brings nursing education to rural communities

UR in the Community

- Responsible for nearly 31,000 area jobs
- Total annual payroll of \$1.4 billion
- Employ 19,500 FTE's
- Spent \$423 million on goods and services
- \$727 million in capital related expenses
(2002-2006)
- \$351 million in funding for sponsored research
- 2,591 active research projects at the University
- 31 patents
- \$40 million in licensing revenue

Source: Economic Impact of the University of Rochester on the Rochester Region, CGR Report, July 2007. (Based on 2006 data)

Slide 27

Robert B. Goergen Hall

Biomedical Engineering and Optics



Slide 28

Aab Cardiovascular Research Institute



Slide 29

James P. Wilmot Cancer Center



Slide 30

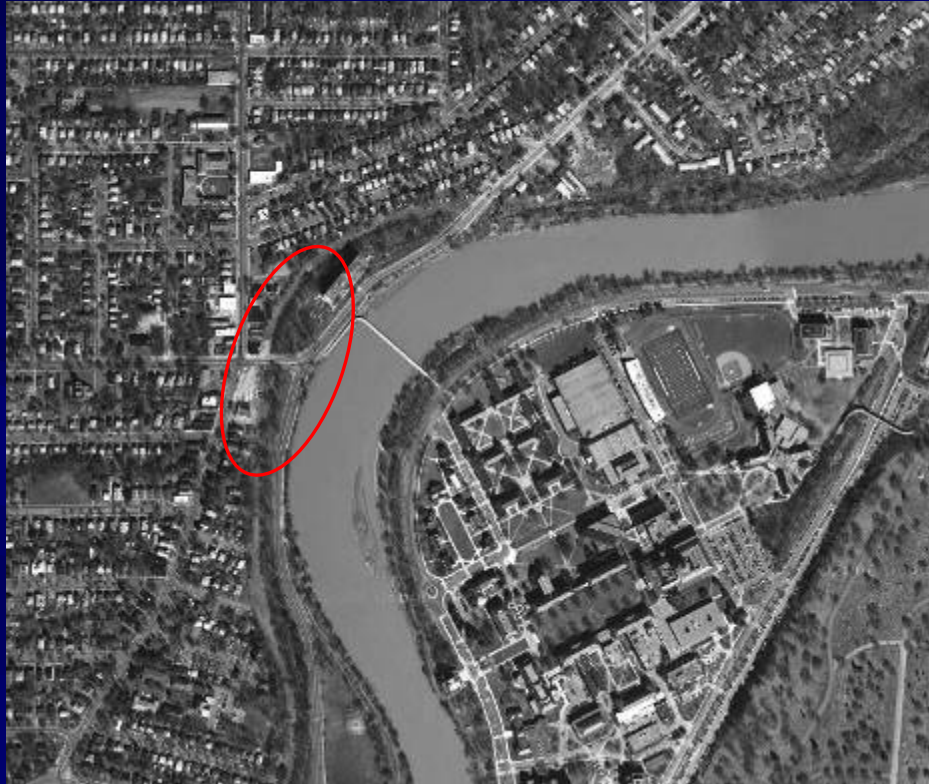
Clinical Translational Sciences Building



Slide 31

Brooks Landing Development

Hotel / Restaurant Site Plan



WEST ELEVATION

Office / Retail Building



Slide 32

Riverview Apartments



In 2006, the Medical Center

- Participated in more than 120 Community Health Programs
- Served more than 90,000 people
- Provided more than \$33 million in uncompensated and charity care
- Contributed \$12 million towards the cost of treatment for Medicaid patients
- Worked with more than 70 community partners