

Annual Report to the Faculty Senate

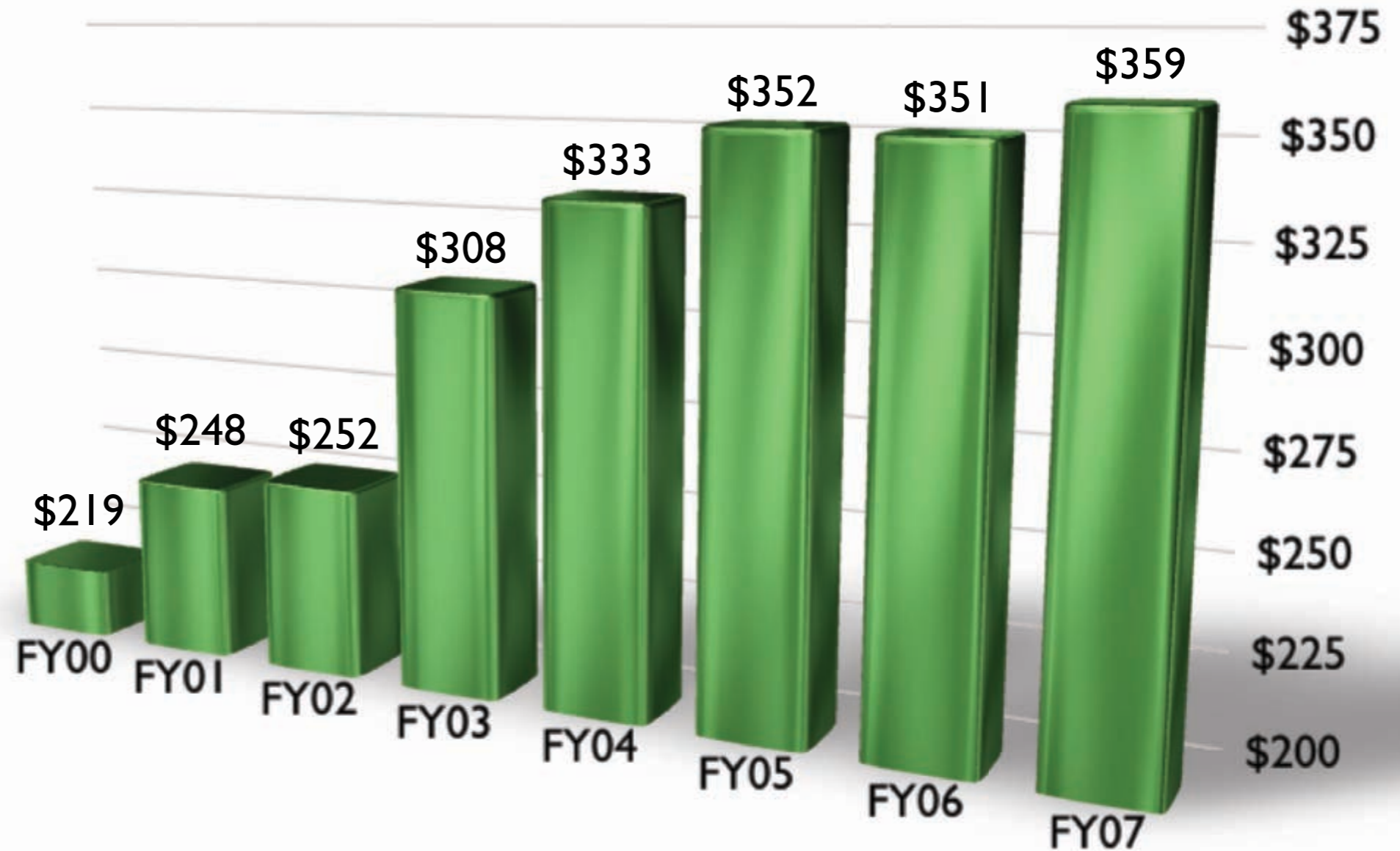


UNIVERSITY of
ROCHESTER

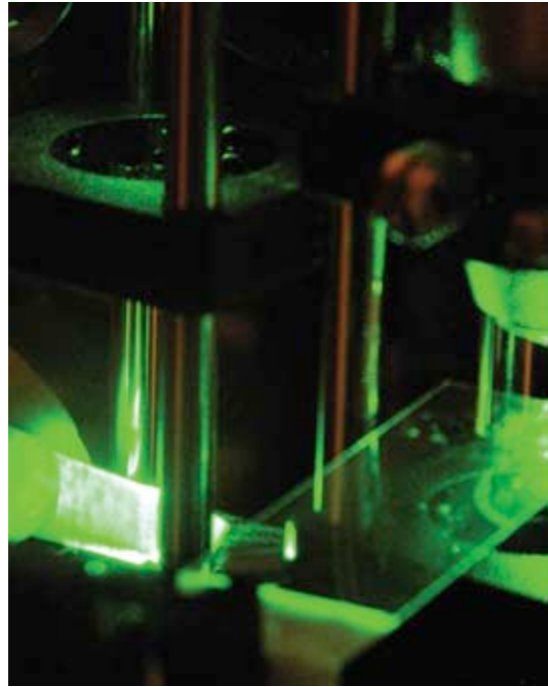
September 9, 2008

Growth in External Research Funding

Millions of Dollars

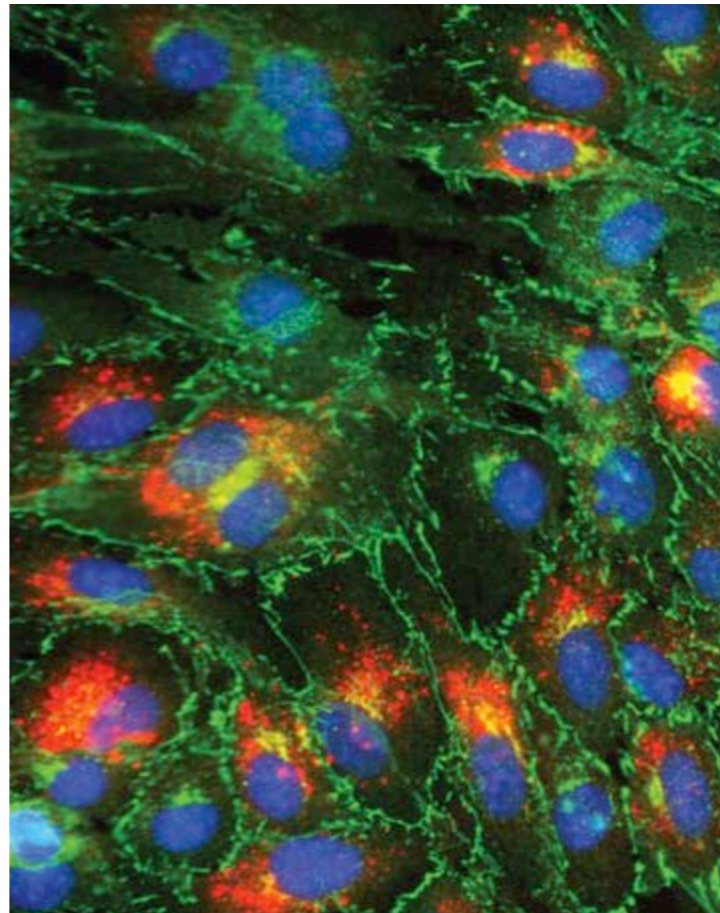


Center for Electronic Imaging Systems

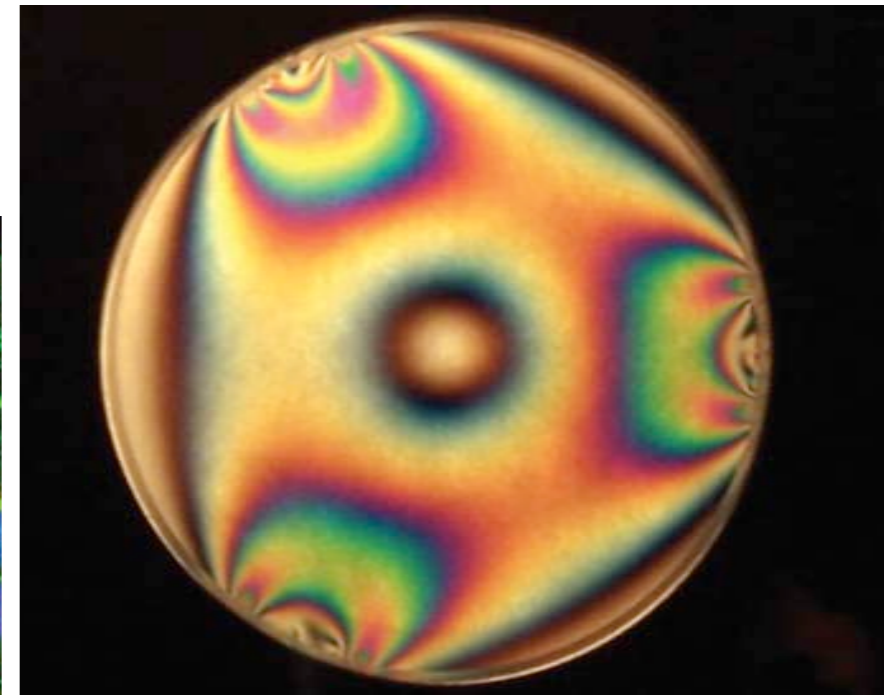


LASER
TECHNOLOGY

ENDOTHELIAL CELLS



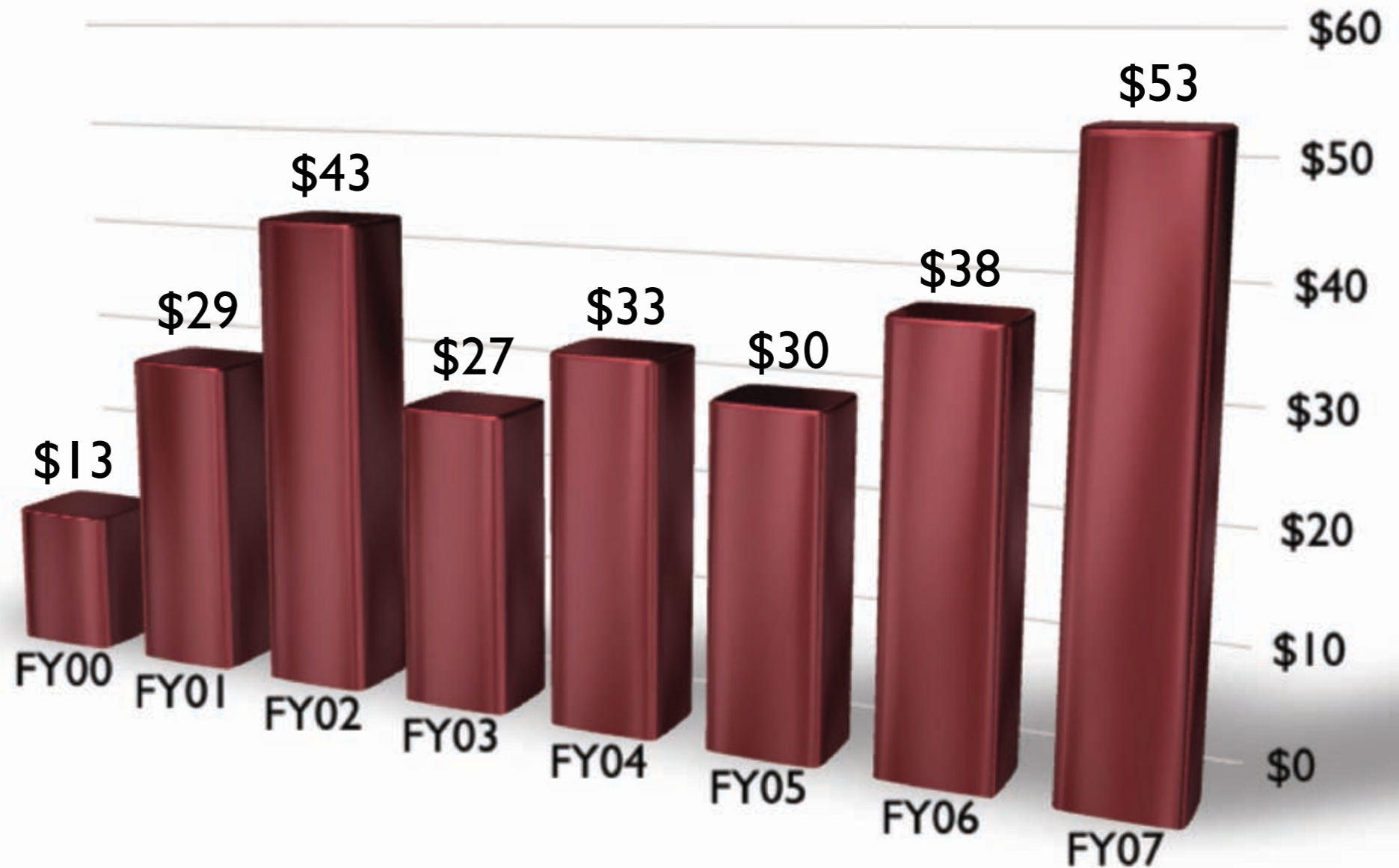
STRESS-ENGINEERED
OPTICAL ELEMENT



Technology Transfer

Revenue

Millions of Dollars



Rochester Promise



UNIVERSITY of
ROCHESTER

September 9, 2008

Provost's Multidisciplinary Awards

- **Lewis J. Rothberg, Alan V. Smrcka:** *Mechanistic Studies of G-Protein Rearrangements Using Single Molecule Fluorescence Resonance Energy Transfer*
- **Lisa Demeter, Hongyu Miao, Kai Shen, Hulin Wu:** *Computational Approaches for HIV Viral Fitness Research*
- **Daniel Gildea, Florian Jaeger, Lenhart Schubert, Michael Tanenhaus:** *Computational Psycholinguistics: Integrating Computational and Behavioral Methods to Study Human Language Processing*
- **Carmala N. Garzione, Justin M. Ramsey:** *Genetics and the Environment: How Do Plants Adapt to Dry Climate Conditions?*
- **David H. Mathews, Lewis J. Rothberg, Douglas H. Turner:** *Studies of RNA Strand Invasion Using Gold Nanoparticle Hybridization Assays*
- **Hans Davidsson, Jack Mottley, Joel Speerstra, Daniel Zager:** *The Importance of Haptics in Organ Performance, Pedagogy, and Scholarship*

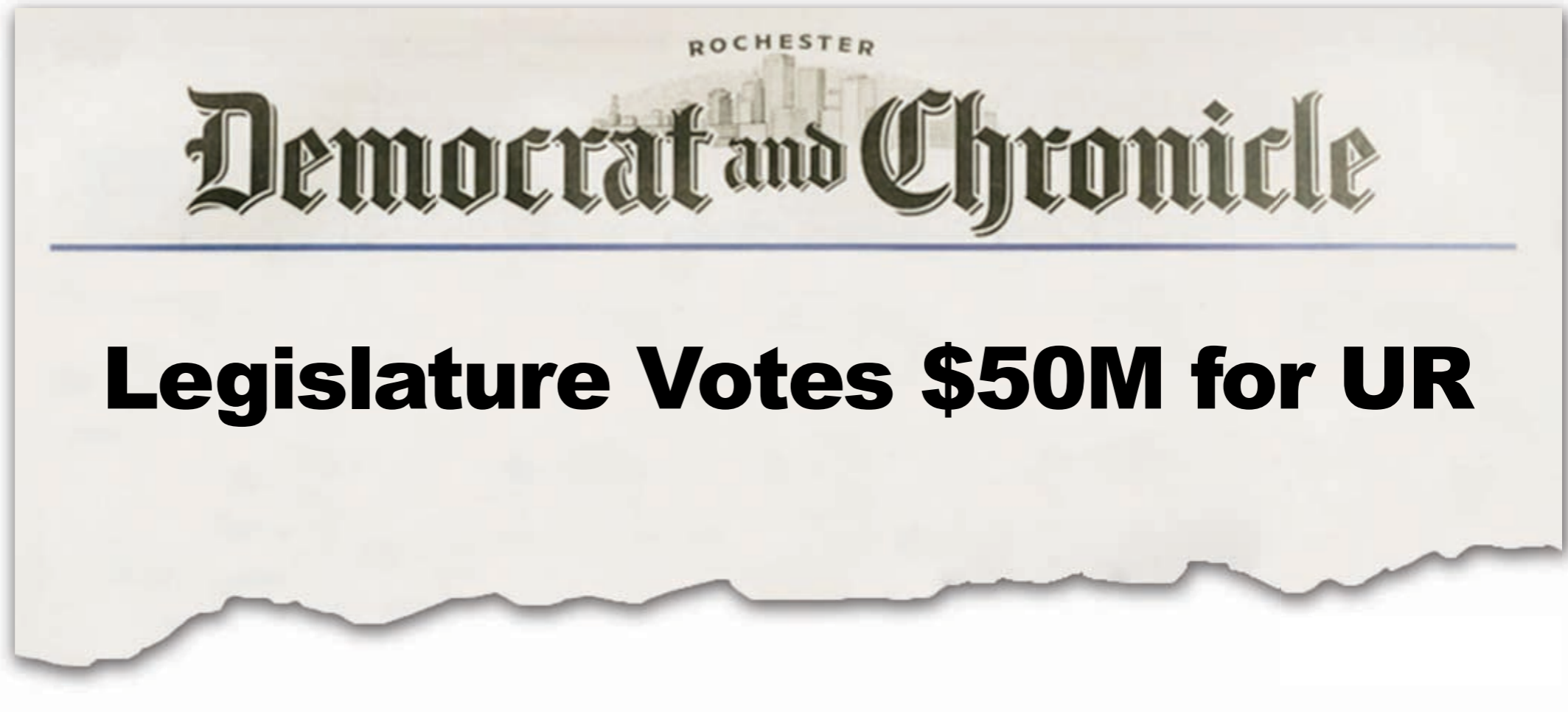
Maple Ridge Wind Farm



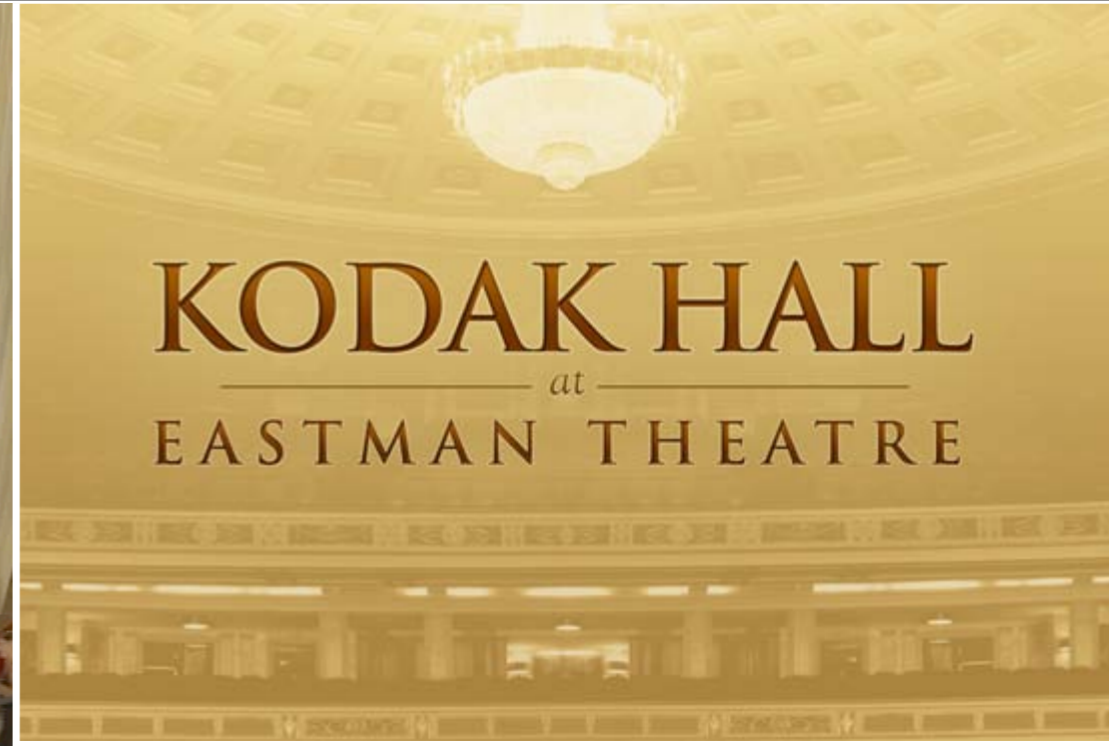
George Eastman Circle



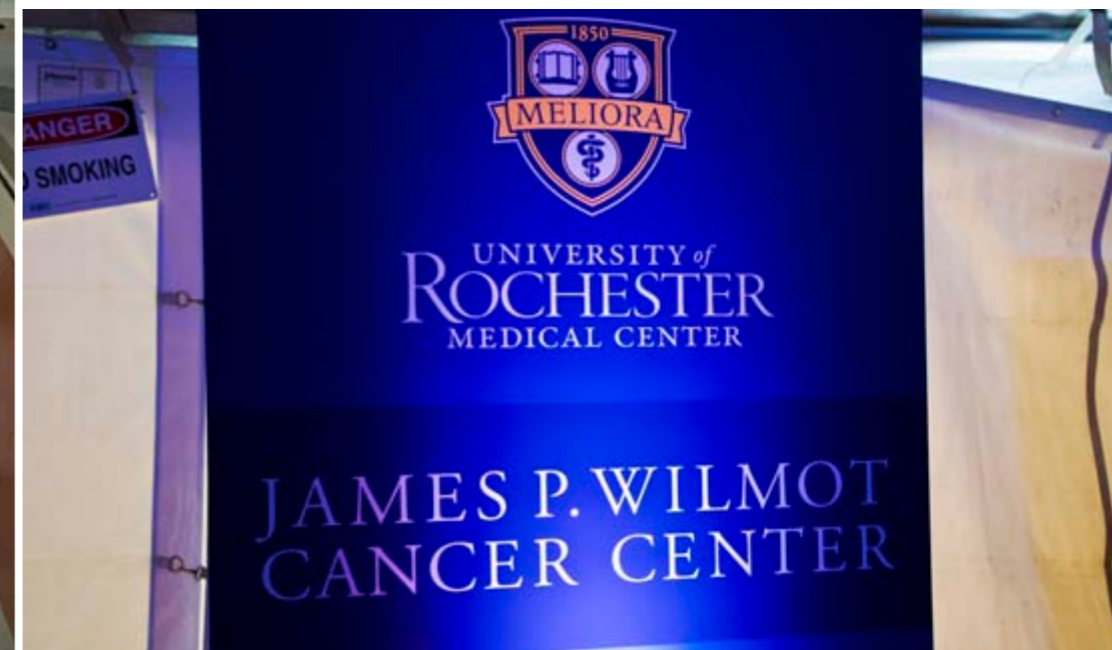
Clinical Translation and Science Building



Eastman Theatre



James P. Wilmot Cancer Center



Anne Mulcahy



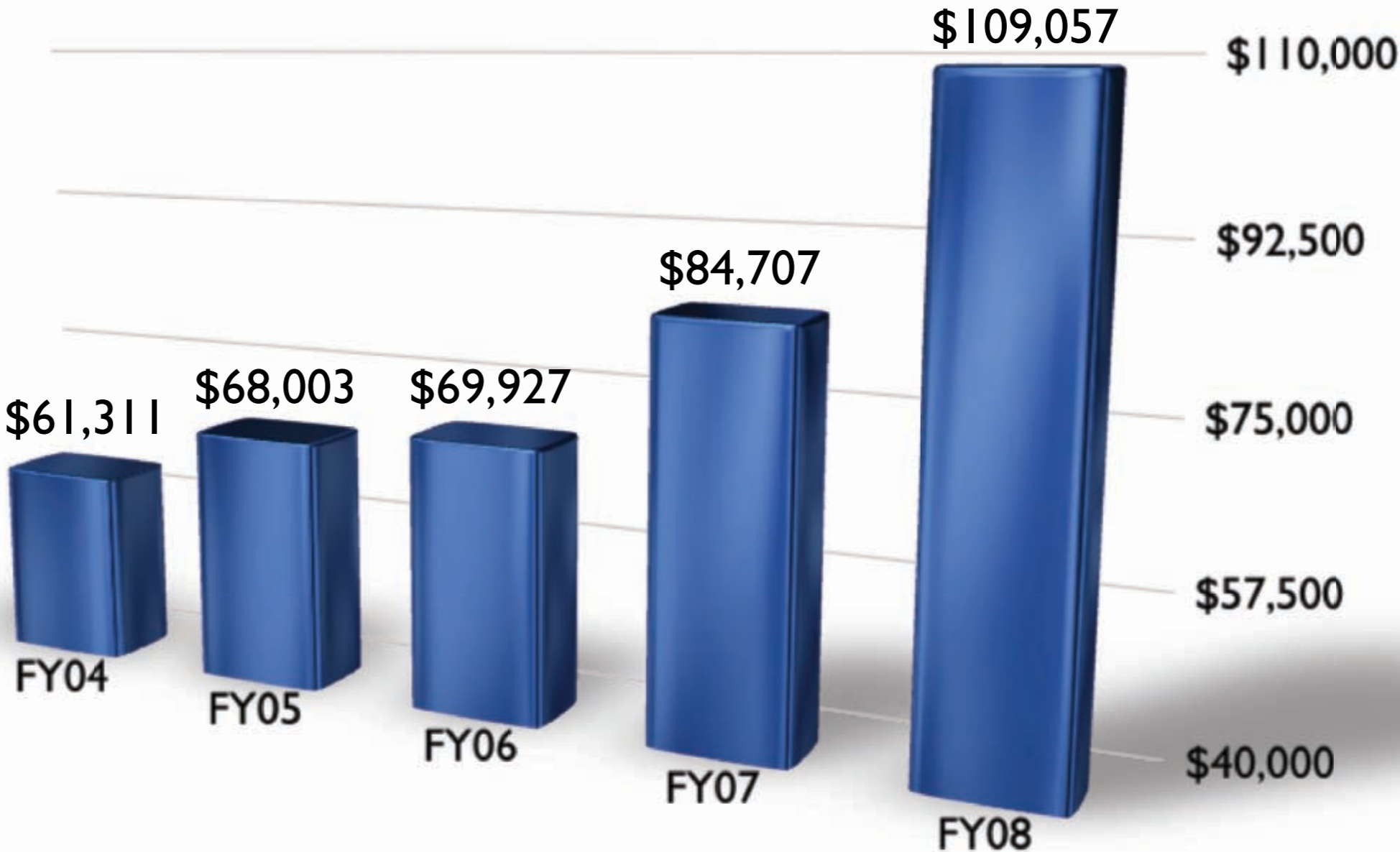
Laboratory for Laser Energetics



Advancement

5-year Historic
Total Cash
Performance

Thousands of
Dollars



Moody's Upgraded Bond Rating



Moody's Corporation

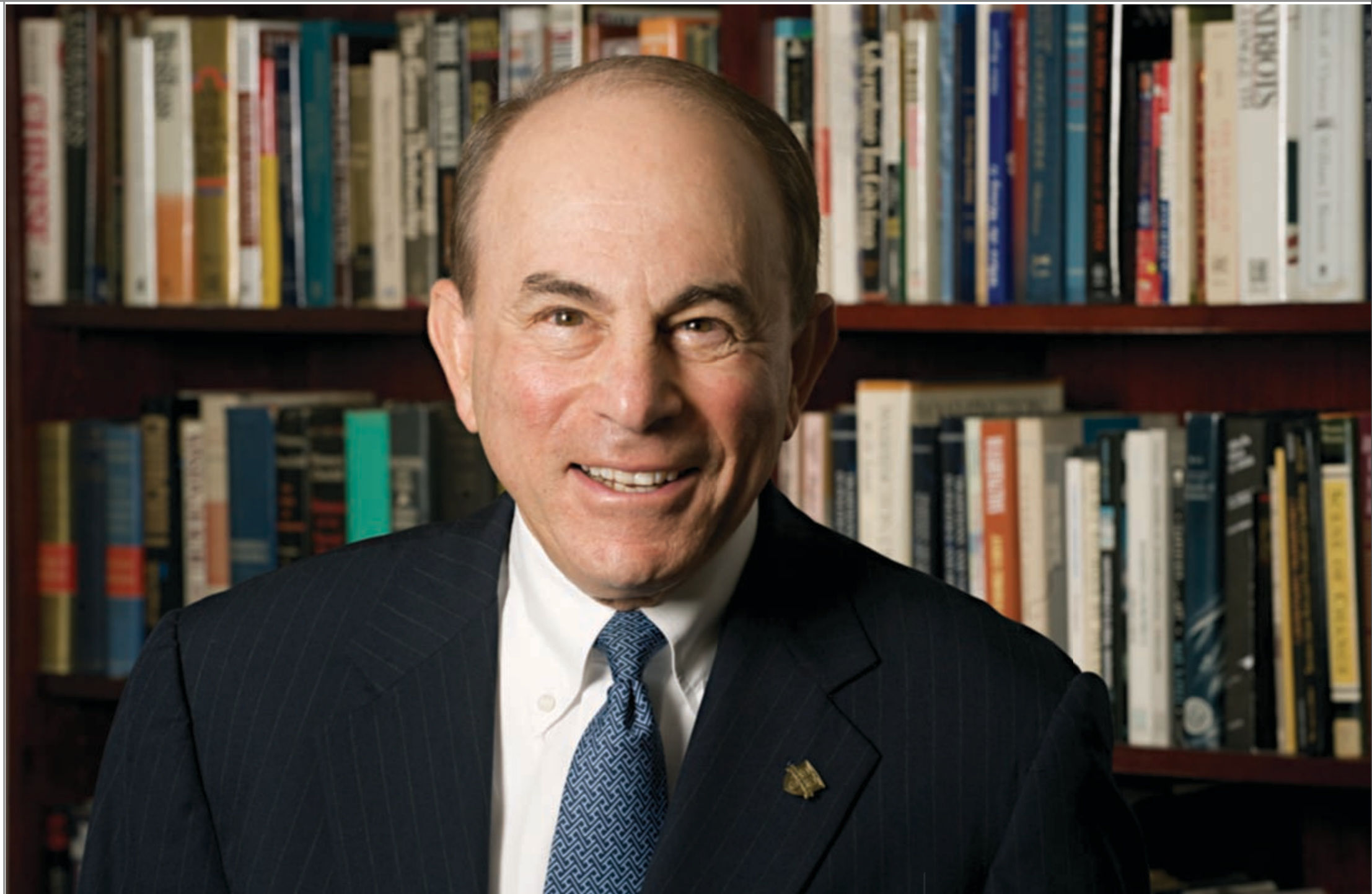
Rating Update: University of Rochester, NY

**MOODY'S UPGRADES RATING ON UNIVERSITY OF ROCHESTER
TO AA3 FROM A1 IN CONJUNCTION WITH CONVERSION OF
SEVERAL SERIES OF VARIABLE RATE DEBT; OUTLOOK IS STABLE**

Bob Witmer



Ed Hajim



New Board of Trustees Members



Elena Prokupets



Thomas Wilmot Sr.



Elizabeth Moore

Richard Sands



Ron Dow



Susan Gibbons



Pat Chiverton



Kathy Parker



Kevin Parker

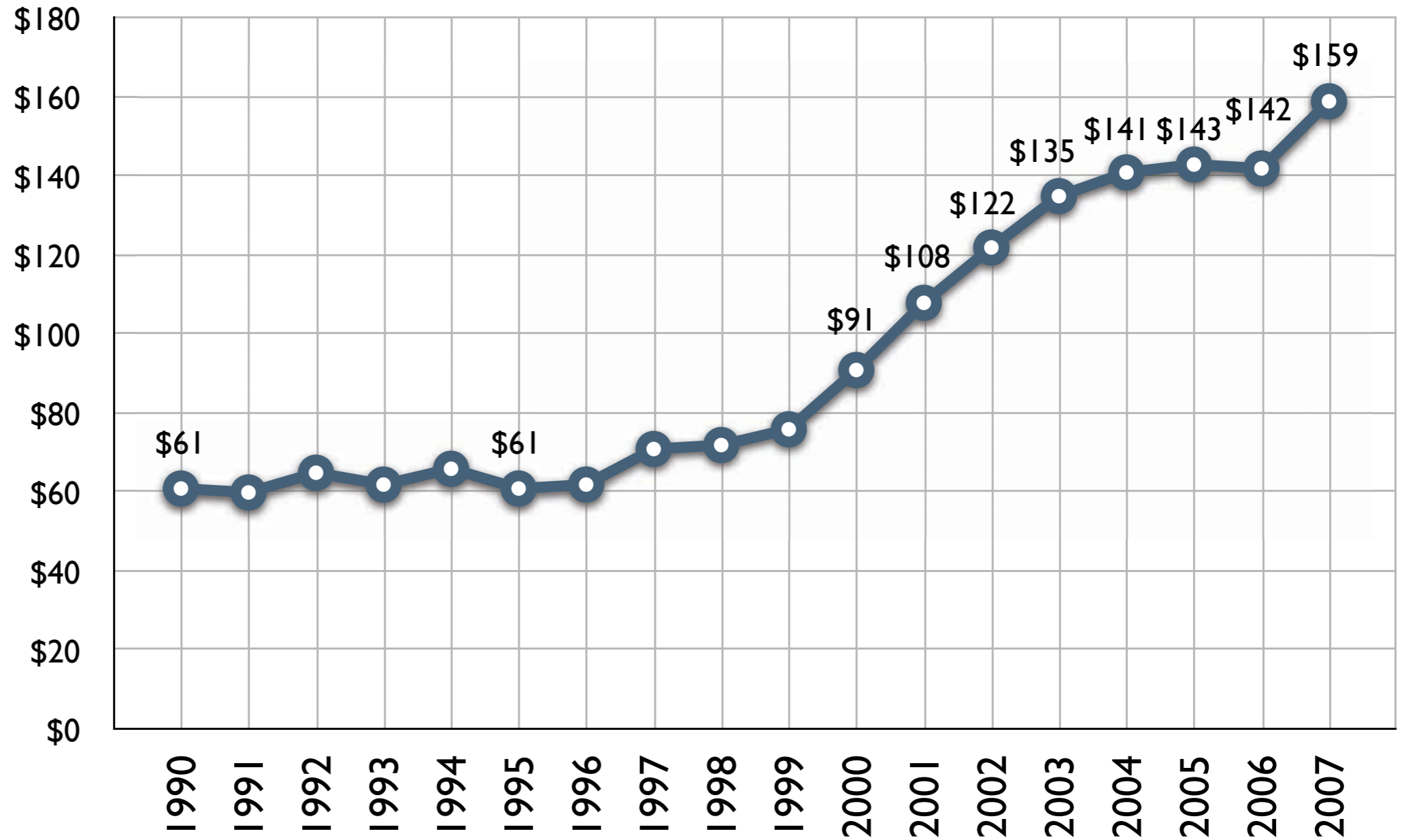


Rob Clark

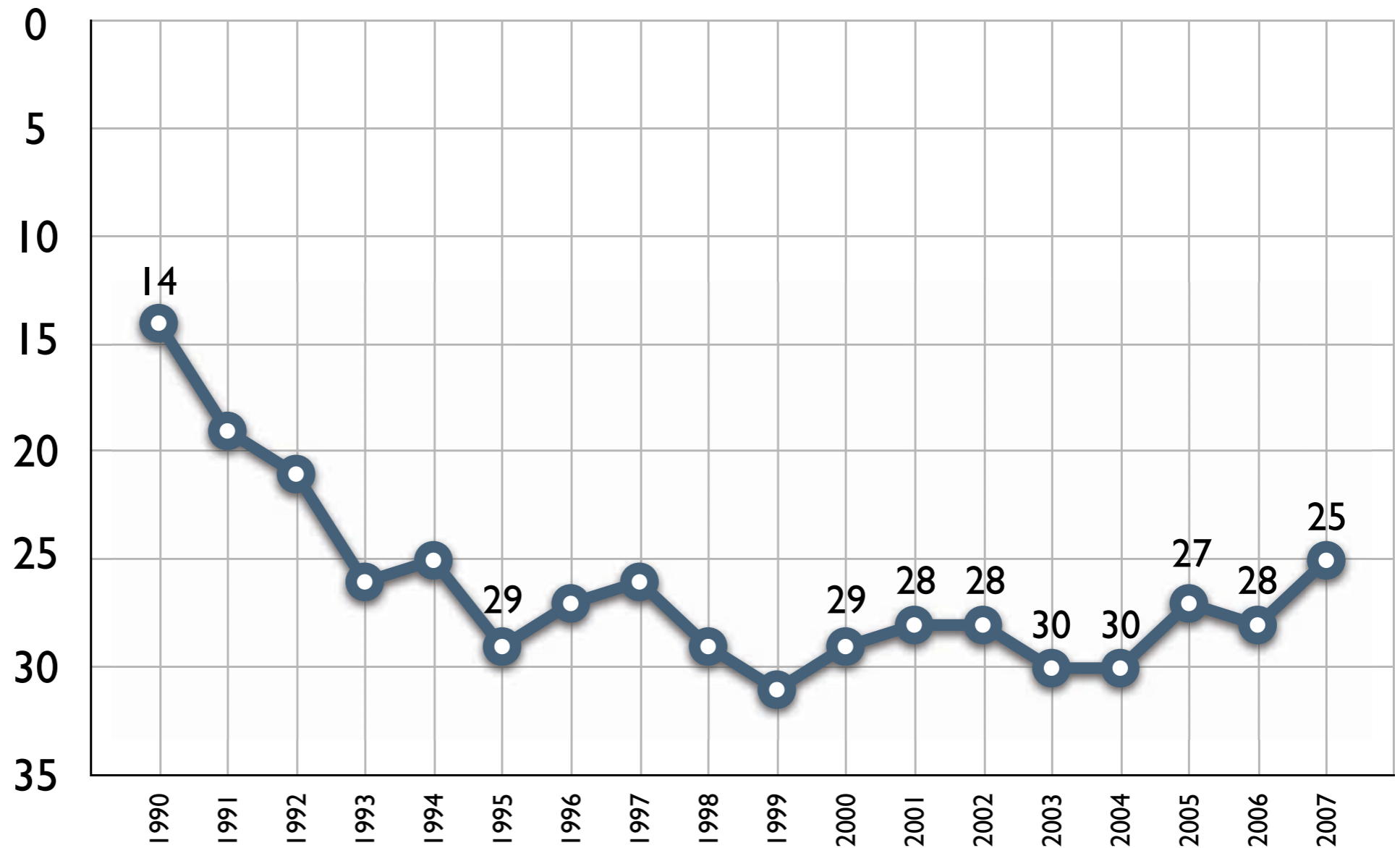


Recent SMD NIH Funding

NIH \$'s
Awarded to
SMD
Millions of
Dollars



Recent SMD NIH Ranking



Aab Cardiovascular Research Institute



Clinical and Translational Science Building



Ambulatory Surgery Center



PRISM



Medical Center Strategic Plan

- Cancer
- Cardiovascular Disease
- Immunology and Infectious Disease
- Musculoskeletal Disease
- Neuromedicine

Innovative Science Programs

- Stem Cell and Regenerative Medicine
- Biomedical Imaging and Biomarkers
- Nanomedicine
- Genomics and Systems Biology

College Strategic Growth

	2006-07	2008-09	2012-13	2017-18
FACULTY SIZE	322	332	360	400
TOTAL ABOVE BASE	-	10	38	78
UG ENROLLMENT	4027	4320	4600	4950
TOTAL ABOVE BASE	-	293	573	923
PHD ENROLLMENT	930	978	1000	1100
TOTAL ABOVE BASE	-	48	70	170

College Strategic Plan

- World Beyond the United States
- Signature Programs that Connect the Humanities to Science and Engineering
- Science and Engineering Partnerships
- Pre-Professional Education
- Professional Education

College Admission Data

ENTERING YEAR	1995	2000	2005	2007	2008
NUMBER OF APPLICANTS	8,385	10,082	11,293	11,678	11,593
PERCENT OFFERED	63.3%	50.4%	47.6%	40.4%	42.0%
ENTERED	1,085	930	997	1,062	1,140*
YIELD RATE	20.5%	18.3%	18.5%	22.2%	24.0%*
AVERAGE HIGH SCHOOL GPA	3.18	3.52	3.56	3.64	3.7*
TWO CORE SCORES	1,230	1,315	1,304	1,317	1,314
GEOGRAPHIC DISTRIBUTION					
ROCHESTER AREA	13%	13%	13%	9%	10%
REMAINDER OF NY STATE	44%	30%	34%	34%	35%
OUT OF STATE	43%	57%	53%	57%	55%

*Estimated

2008 Fulbright Scholars

Emily Lyman



Brett D. Stark



Rebekah Porter



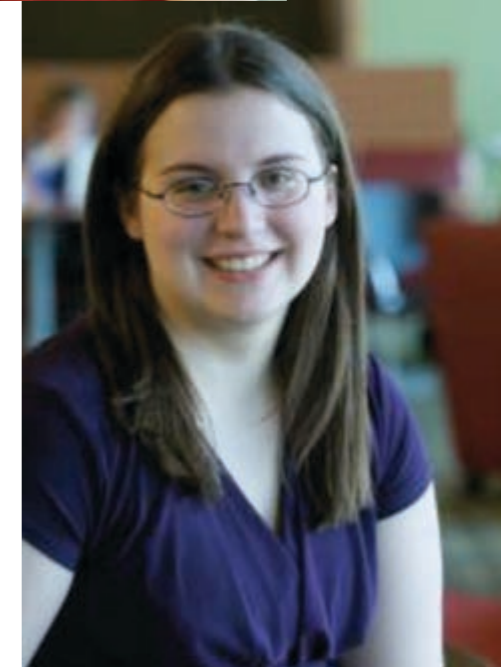
Sarah E. Burnham



Ashley Van Vechten



Benjamin Schmitt



Christine Kenison

National College Bowl



UNIVERSITY of
ROCHESTER

September 9, 2008

Men's Squash Record Season



UNIVERSITY of
ROCHESTER

September 9, 2008

Ashley Van Vechten '08



Riverview



Simon Admissions Data

MBA PROGRAMS	SEPT '04 & JAN '05 PT-ALL OF '04		SEPT '05 & JAN '06 PT-ALL OF '05		SEPT '06 & JAN '07 PT-ALL OF '06		SEPT '07 & JAN '08 PT-ALL OF '07		SEPT '08 & JAN '09 PT-ALL OF '08*	
	FT	PT	FT	PT	FT	PT	FT	PT	FT	PT
NUMBER OF APPLICANTS	875	85	714	70	814	122	850	112	1,016	96
TOTAL ENTERED	145	60	119	50	150	80	165	65	170*	65
GMAT	664	586	659	565	667	557	673	581	675	566
GPA	3.4	3.23	3.45	3.27	3.46	3.25	3.52	3.25	3.49	3.13
EMBA ENTERED	42		40		28		37		47*	
SPECIALIZED MASTER'S TOTAL ENTERED	7		44		62		67		89	

*Estimated

Eastman Admissions Data

	ENTERED 2004		ENTERED 2005		ENTERED 2006		ENTERED 2007		ENTERED 2008	
	UGRAD	GRAD	UGRAD	GRAD	UGRAD	GRAD	UGRAD	GRAD	UGRAD	GRAD
NUMBER OF APPLICANTS	971	842	1,009	854	997	965	1,093	999	1,093	1,031
NUMBER OF OFFERS	268	252	243	204	257	216	283	222	269	220
SELECTIVITY	27.6%	29.9%	24.0%	24.2%	25.8%	22.3%	25.9%	22.2%	24.6%	21.3%
TOTAL ENTERED	134	165	129	126	136	145	147	136	139	141
YIELD	50.0%	65.5%	53.1%	61.8%	52.9%	67.1%	51.9%	61.3%	51.7%	64.1%

Warner Admissions Data

	ENTERED 2004		ENTERED 2005		ENTERED 2006		ENTERED 2007		ENTERED 2008	
	MS	Doc	MS	Doc	MS	Doc	MS	Doc	MS	Doc
NUMBER OF APPLICANTS	286	36	304	37	319	40	278	150	326	135
NUMBER OF OFFERS	225	26	253	20	256	30	221	120	281	114
SELECTIVITY	79%	72%	83%	54%	80%	75%	79%	80%	86%	84%
TOTAL ENTERED	139	12	161	14	184	20	128	86	204	81
YIELD	62%	46%	64%	70%	72%	67%	60%	72%	73%	71%

Advancement Pledge Performance

	ACTUAL (IN MILLIONS)		
	FY06	FY07	FY08
TOTAL CASH	69.9	84.7	109.1
CUMULATIVE TOTAL CASH BALANCE (BEGINNING 7/1/05)	69.9	154.6	263.7
CUMULATIVE TOTAL CASH AND PLEDGE BALANCE (BEGINNING 7/1/05)	78.8	181.8	325.7

Endowment and Similar Funds

Billions of Dollars



Rocky and Spirit R



Rochester Review



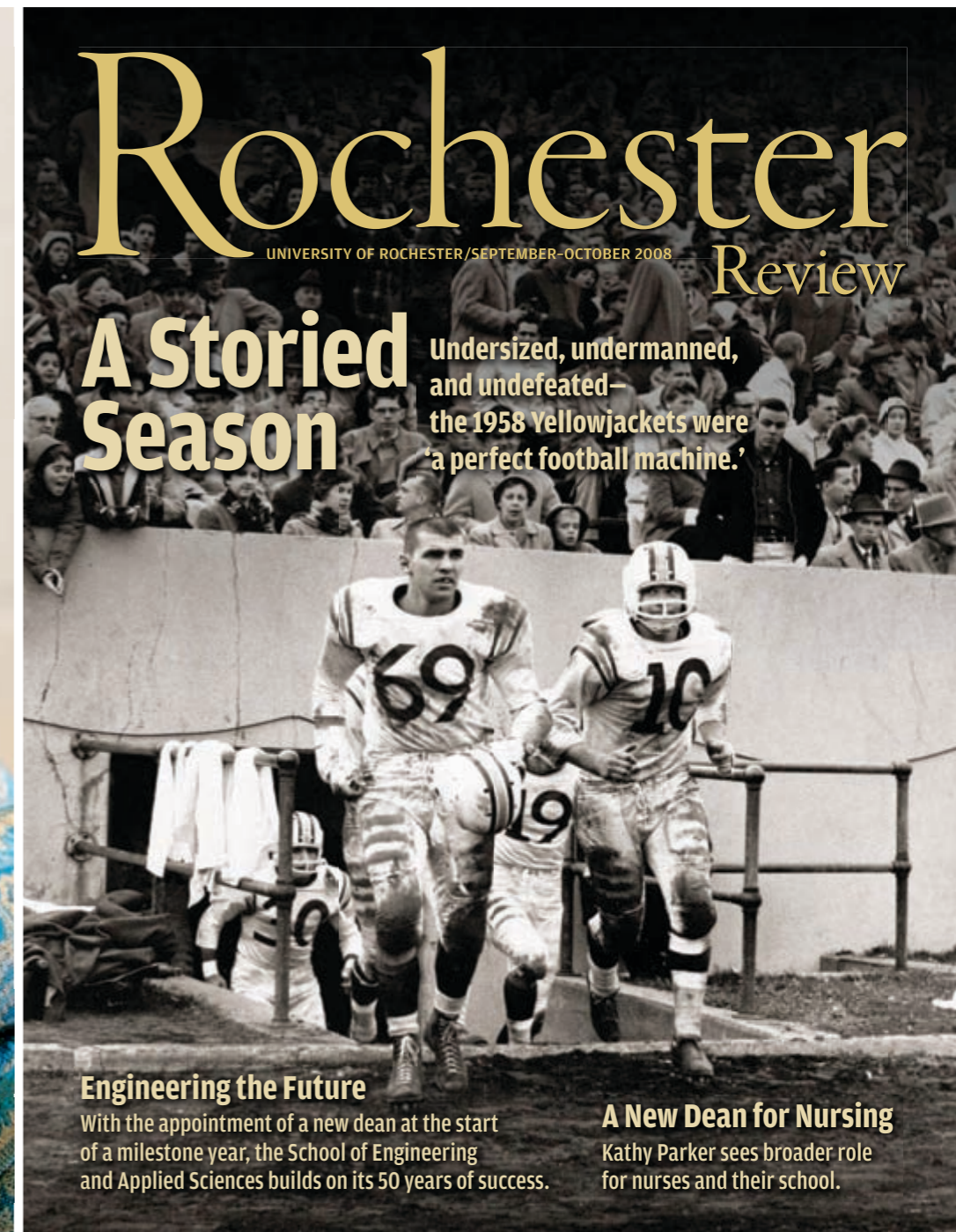
Rochester Review

A Campus of Many Faiths

What role does faith—and the interaction among faiths—play in the lives of College students?

Meet the Chairman
Trustee Ed Hajim '58 talks about his new role as board chairman.

Teen Angst?
How parents can learn to appreciate why their teens act the way they do.



Rochester Review

UNIVERSITY OF ROCHESTER / SEPTEMBER-OCTOBER 2008

A Storied Season

Undersized, undermanned, and undefeated—the 1958 Yellowjackets were 'a perfect football machine.'

Engineering the Future
With the appointment of a new dean at the start of a milestone year, the School of Engineering and Applied Sciences builds on its 50 years of success.

A New Dean for Nursing
Kathy Parker sees broader role for nurses and their school.

WELCOME BACK
A message from
President Seligman
Page 2



OPEN LETTER
Translation
press releases
first title
Page 4



PAST PEAK
History of
Himalayan
climbs
Page 8



Tuesday, September 2, 2008

www.rochester.edu/currents

Vol. 36, No. 13

Faculty, staff, and alumnus honored during Convocation ceremony



Frederick Cohen



Robert Foster



James Longenbach



Jane Possee



Nigel Maister

The University will recognize the recipients of the Goergen Awards for Contributions to Undergraduate Education during the College's annual Convocation on Friday, September 5. Also during the ceremony, Robert Goergen '60 will receive the Charles Force Hutchinson and Marjorie Smith Hutchinson Medal, an honor given to an alumnus or alumna

in recognition of achievement and notable service. Goergen, a trustee and former board chairman, and his wife, Pamela, have sponsored the Goergen Awards since 1997.

This year's recipients of the Goergen Award for Distinguished Achievement and Artistry in Undergraduate Teaching are Frederick Cohen, professor of mathematics;

Robert Foster, professor of anthropology; and James Longenbach, Joseph Henry Gilmore Professor of English. Jane Possee, associate director of athletics and recreation, and the International Theatre Program also will be honored with separate Goergen awards.

[Read more on pages 3 and 4](#)

Study shows University is \$1.9 billion 'economic power'

According to a new report from the Center for Governmental Research, the University is expanding its role as Rochester's largest employer, adding 745 full-time equivalent (FTE) employees over the last year. The University also paid wages of more than \$1.07 billion and provided training for 46 percent of the doctors currently practicing in the region, according to the study.

The report also highlights the University's economic role beyond employer, noting that the University purchased \$96 million worth of goods and services locally, drew visitors that were responsible for more than 18,000 local hotel reservations, and on average spends \$175 million a year on capital projects, supporting 2,800 construction-related jobs.



MASS MIGRATION

The Class of 2012 (and their stuff) arrived on the River Campus and at the Eastman School on August 25. Thankfully, flocks of fellow students, such as D'Lion Liesel Schwartz '11 (left), were standing by to help Rochester frosh and their parents transfer those must-have items from car to dorm room. For the rest of the week, freshmen took part in Orientation activities, including the 20th annual Wilson Day of community

Events Calendar

University of Rochester Events Calendar

UNIVERSITY of ROCHESTER

SEARCH EMERGENCY CALENDAR DIRECTORY A-Z CONTACT GIVING TEXT

August 2008

S	M	T	W	T	F	S
27	28	29	30	31	1	2
3	4	5	6	7	8	9
10	11	12	13	14	15	16
17	18	19	20	21	22	23
24	25	26	27	28	29	30
31	1	2	3	4	5	6

Date Range: 8/18/08 to 8/24/08 Go

Keywords: Go

Calendar Home
Submit/Update Event
RSS Feeds

Browse by Category
Arts and Entertainment
Athletics
Ceremonies and Traditions
Health and Wellness
Information Sessions
Lectures and Talks
Religious Services
Symposia and Conferences

Events Calendar

Editor's Pick

Artist's Reception: Staff Infection 4

Don't miss the opening celebration of this juried art show featuring the work of University's Libraries and IT staff. Pictured at left is Lisa Wright's "Stand In" (detail) from a grid of 25.

Wednesday, August 20
Gallery at the Art & Music Library, Rush Rhees Library

Events This Week

Monday, August 18, 2008

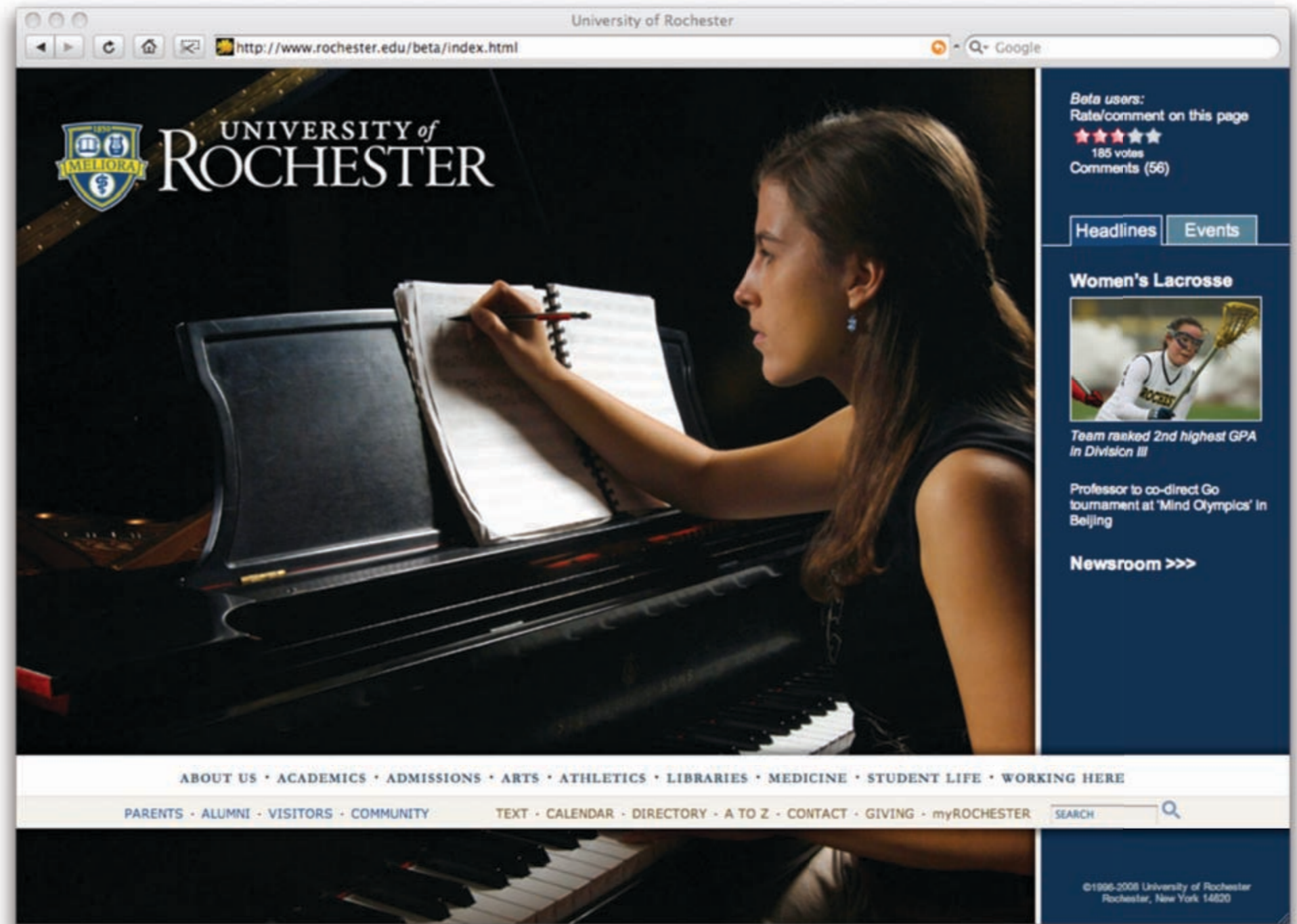
All Day

- [Keith Smith Books: Pages as Stages](#)
Rush Rhees Library, Rare Books and Special Collections
- [Chivalry: Knights and the Knightly Ethos](#)
Rush Rhees Library, Robbins Library
- [No Frames Needed](#)
Miner Library, Medical Center
- [School of Medicine: Instruction Begins, First Year](#)

Updated Facebook Page



New Home Page



WXXI



Weekly Buzz



Special Opportunities Fund

	FY07		FY08		FY09	
	NEW COMMITMENTS	CONTINUING COMMITMENTS	NEW COMMITMENTS	CONTINUING COMMITMENTS	NEW COMMITMENTS	CONTINUING COMMITMENTS
AS&E	0	3	1	1	2	1
EASTMAN	0	0	1	0	1	1
SMD	0	2	3	2	2	3
SON	0	0	2	0	0	2
SIMON	0	0	0	0	0	0
WARNER	0	2	1	2	1	1
UNIVERSITY TOTAL	0	7	8 (4 new hires, 4 retentions)	5	6 (4 new hires, 2 retentions)	8
TOTAL DOLLARS SPENT	\$176,793 (actual)		\$347,421 (actual)		\$399,000 (commitments to date)	

Diversity Employment Data

UNIVERSITY WIDE DATA	FALL 2005		FALL 2006		FALL 2007	
	TOTAL	% OF TOTAL	TOTAL	% OF TOTAL	TOTAL	% OF TOTAL
UNDERREPRESENTED MINORITY FACULTY	31	2.2%	37	2.6%	41	2.8%
WOMEN FACULTY	390	27.4%	411	28.6%	439	29.5%

Frederick Douglass Medal



Lani Guinier and Gerald Torres



UR Economic Impact

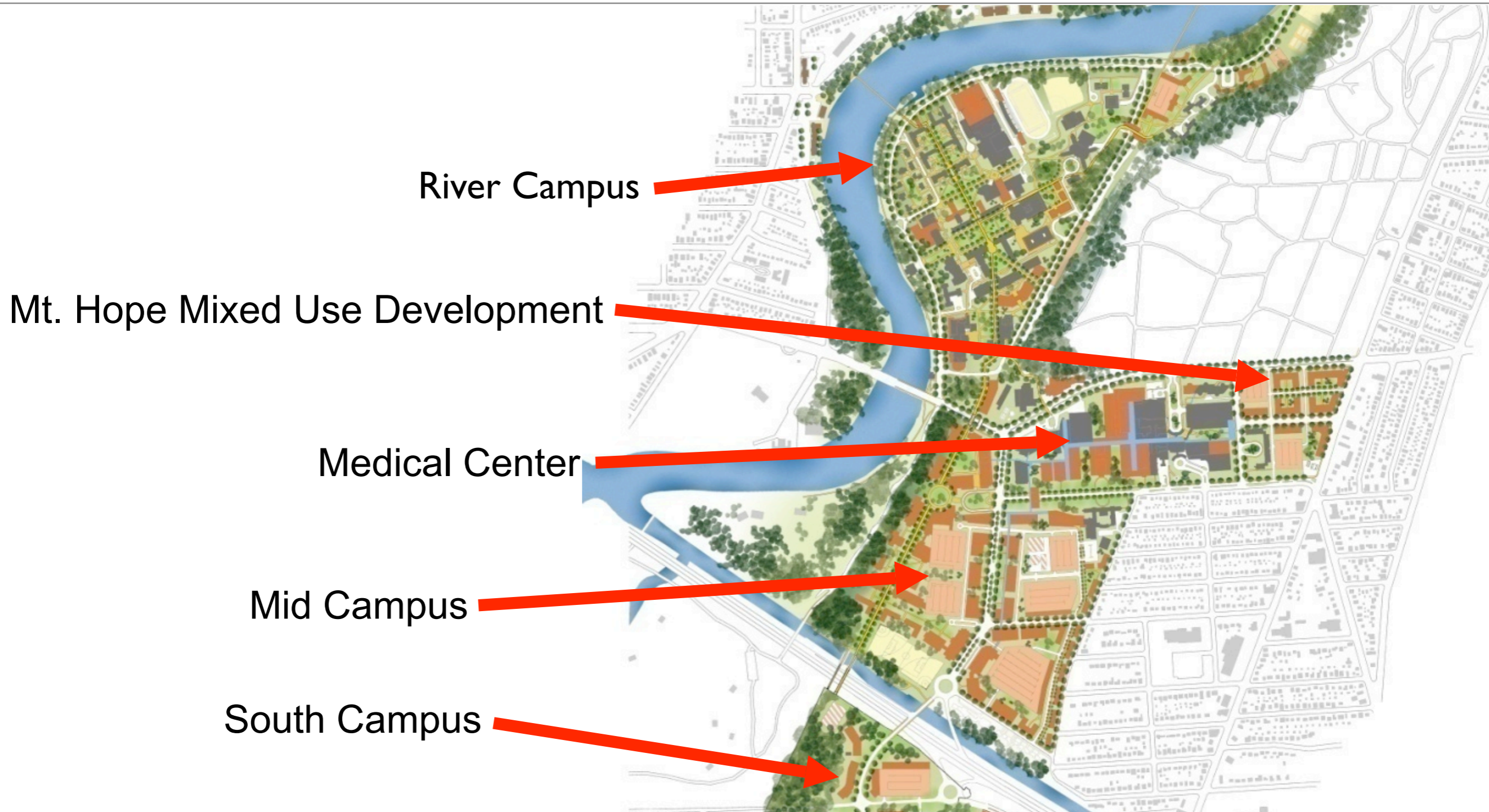
- Signature Programs that connect the Humanities to Science and Engineering
- 18,671 FTEs
- Estimated to be responsible for nearly 28,000 area jobs
- In 2007, spent \$464 million on goods and services
- Yearly average of \$175 million in capital related expenditures (2002-2006)
- \$1.7 billion in external funding

3+3+3 Mortgage Program

Employee Clara Bennett holds a photo of the home she purchased thanks in part to the incentive program.



Overall Campus Master Plan



Mt. Hope Proposed Development



Annual Report to the Faculty Senate



UNIVERSITY of
ROCHESTER

September 9, 2008