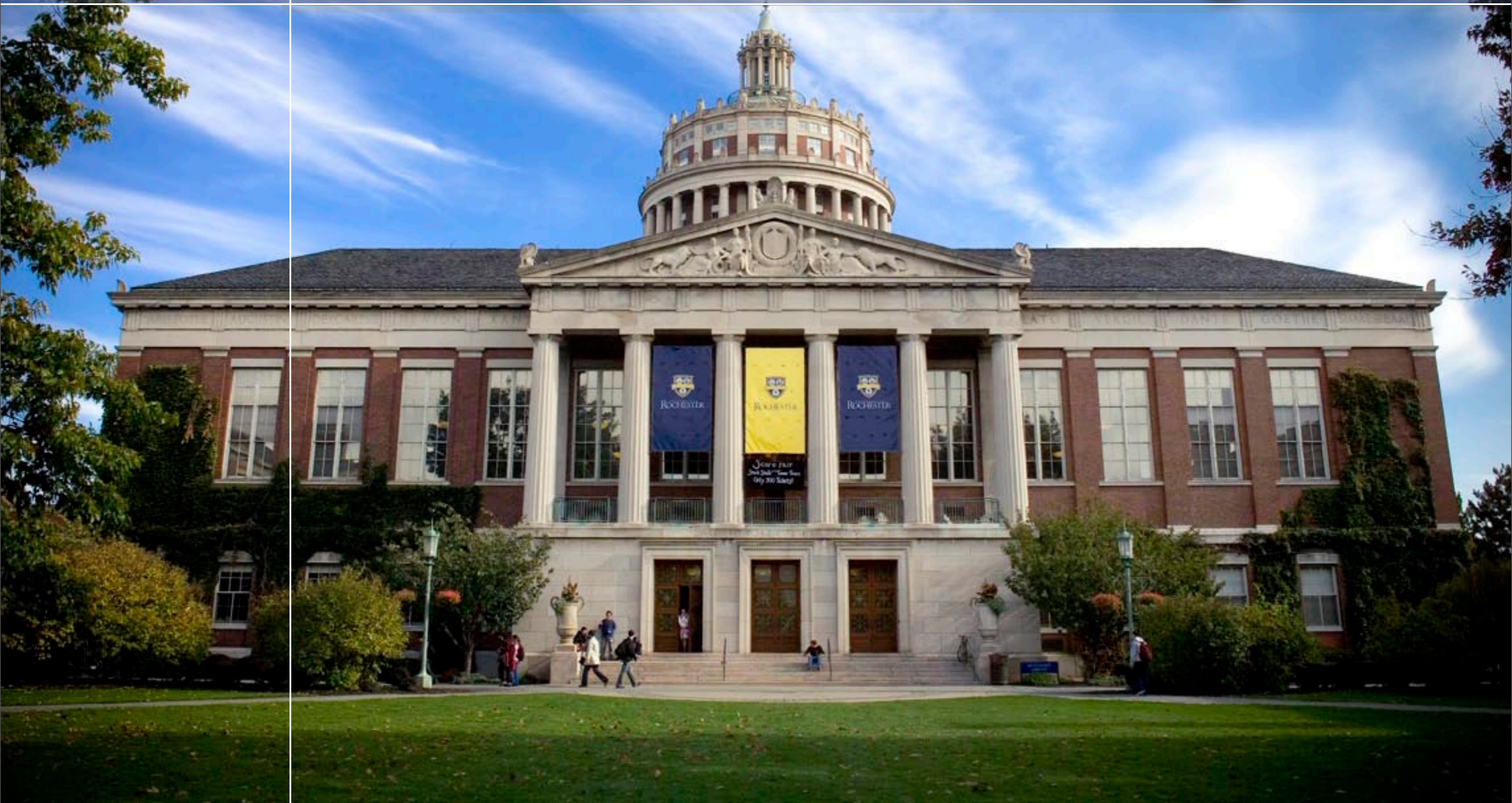


# The Power of Transforming Ideas



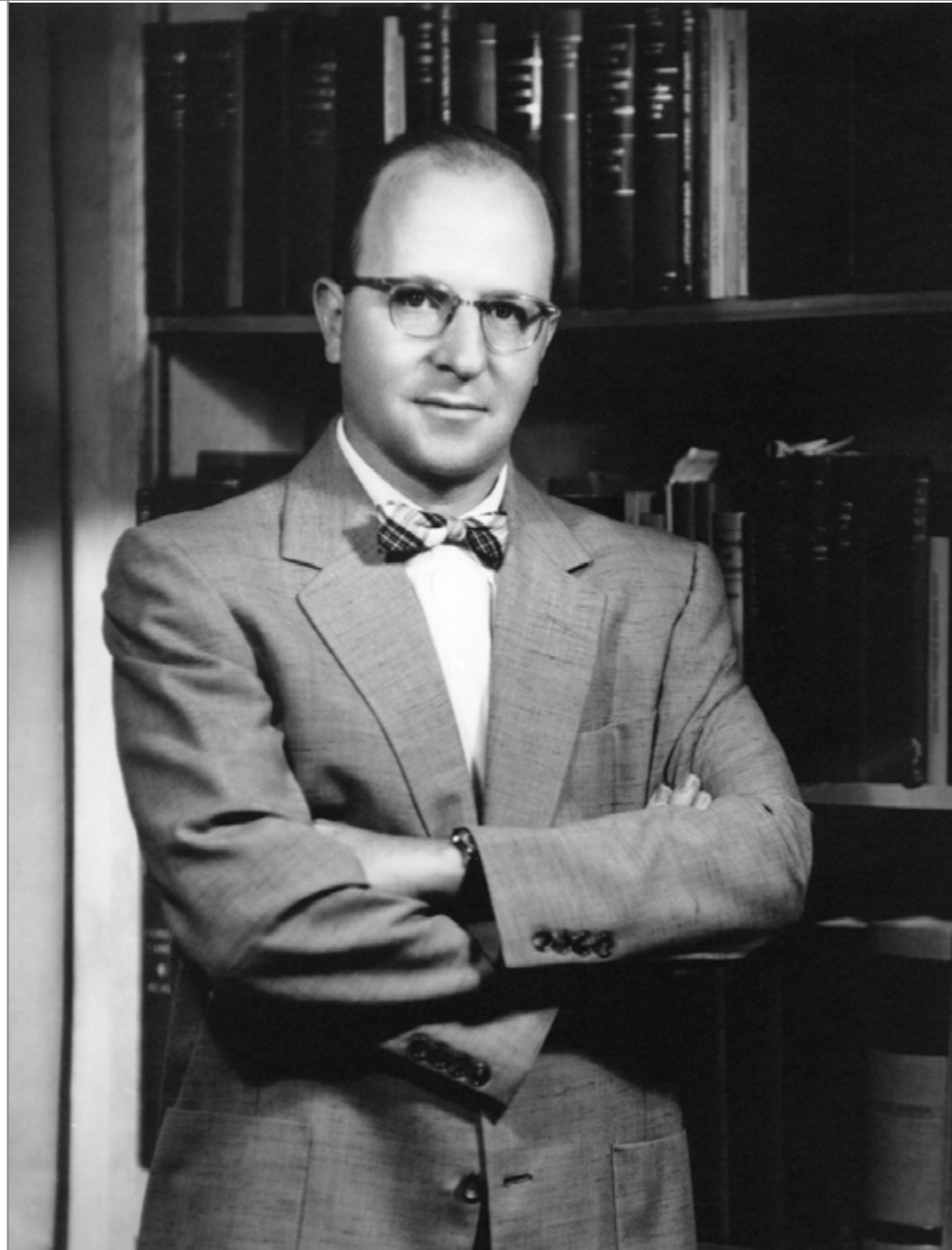
# Howard Hanson



# George Whipple



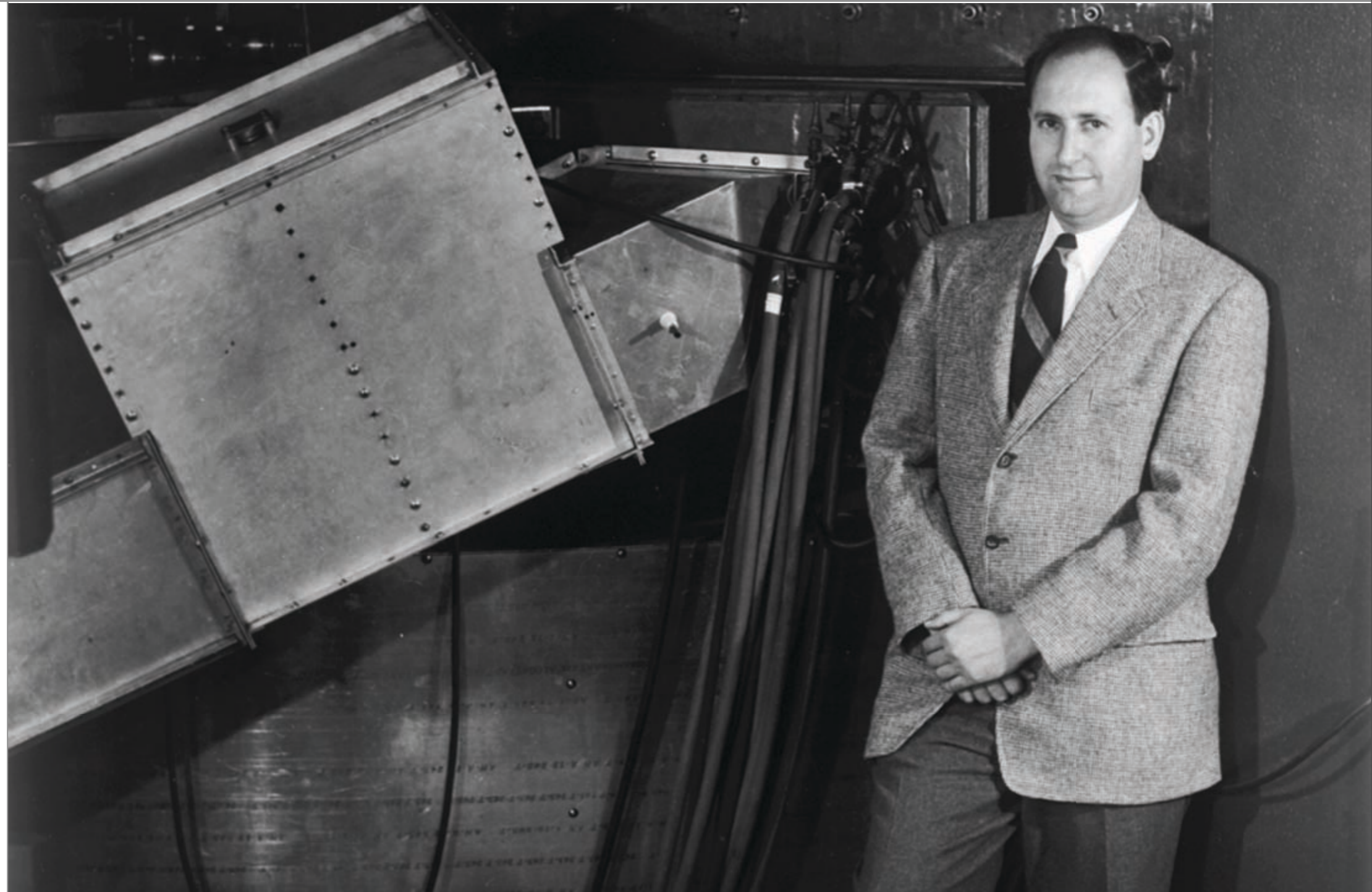
# George Engel & John Romano



# Loretta Ford



# Robert Marshak



# William Riker



# William Meckling & Michael Jensen



UNIVERSITY of  
ROCHESTER

June 10, 2008



# The College of Arts, Sciences and Engineering

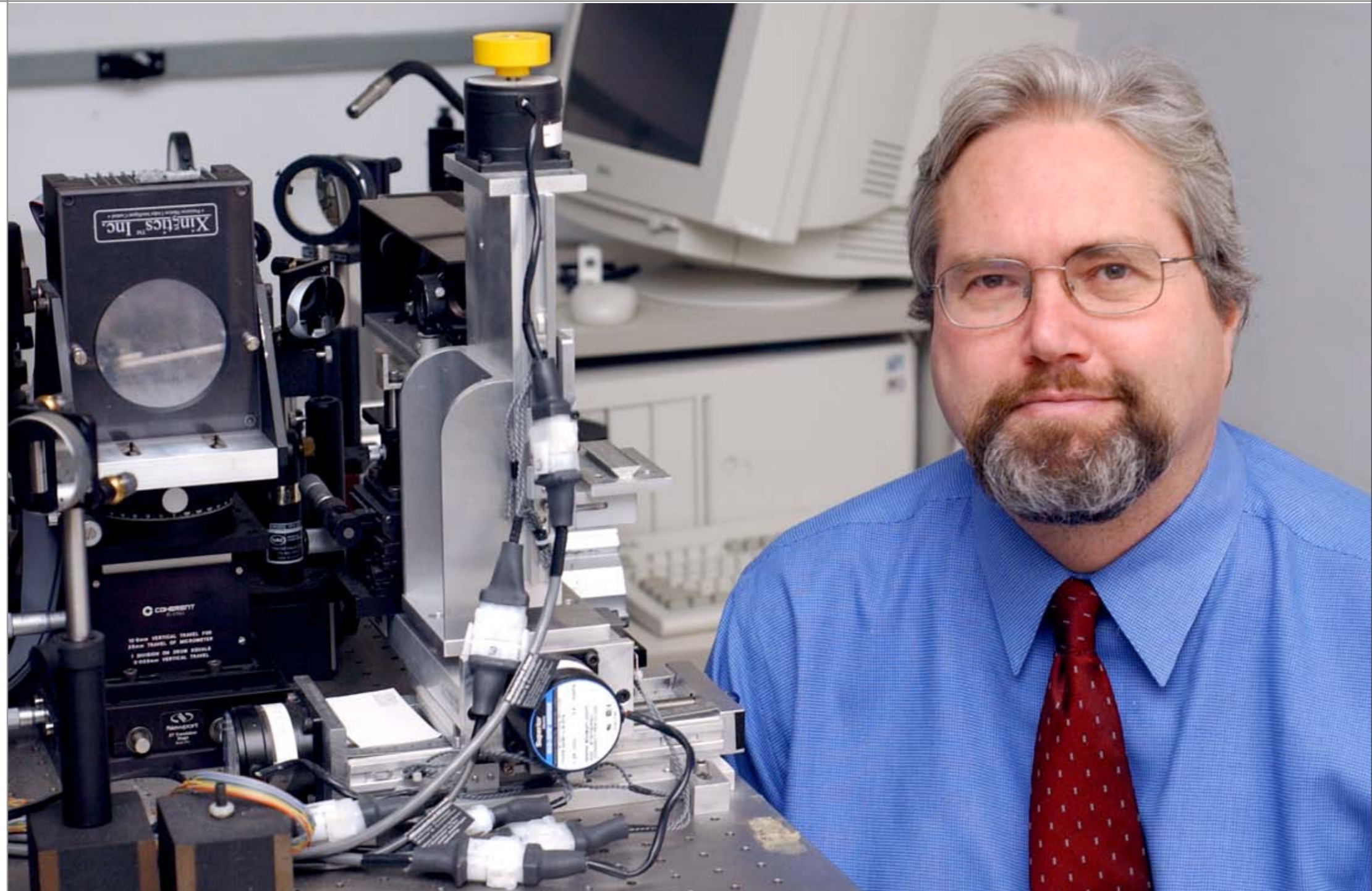


UNIVERSITY *of*  
ROCHESTER

June 10, 2008

# David Williams

William G.  
Allyn  
Professor of  
Medical  
Optics and  
director of  
the Center  
for Visual  
Science



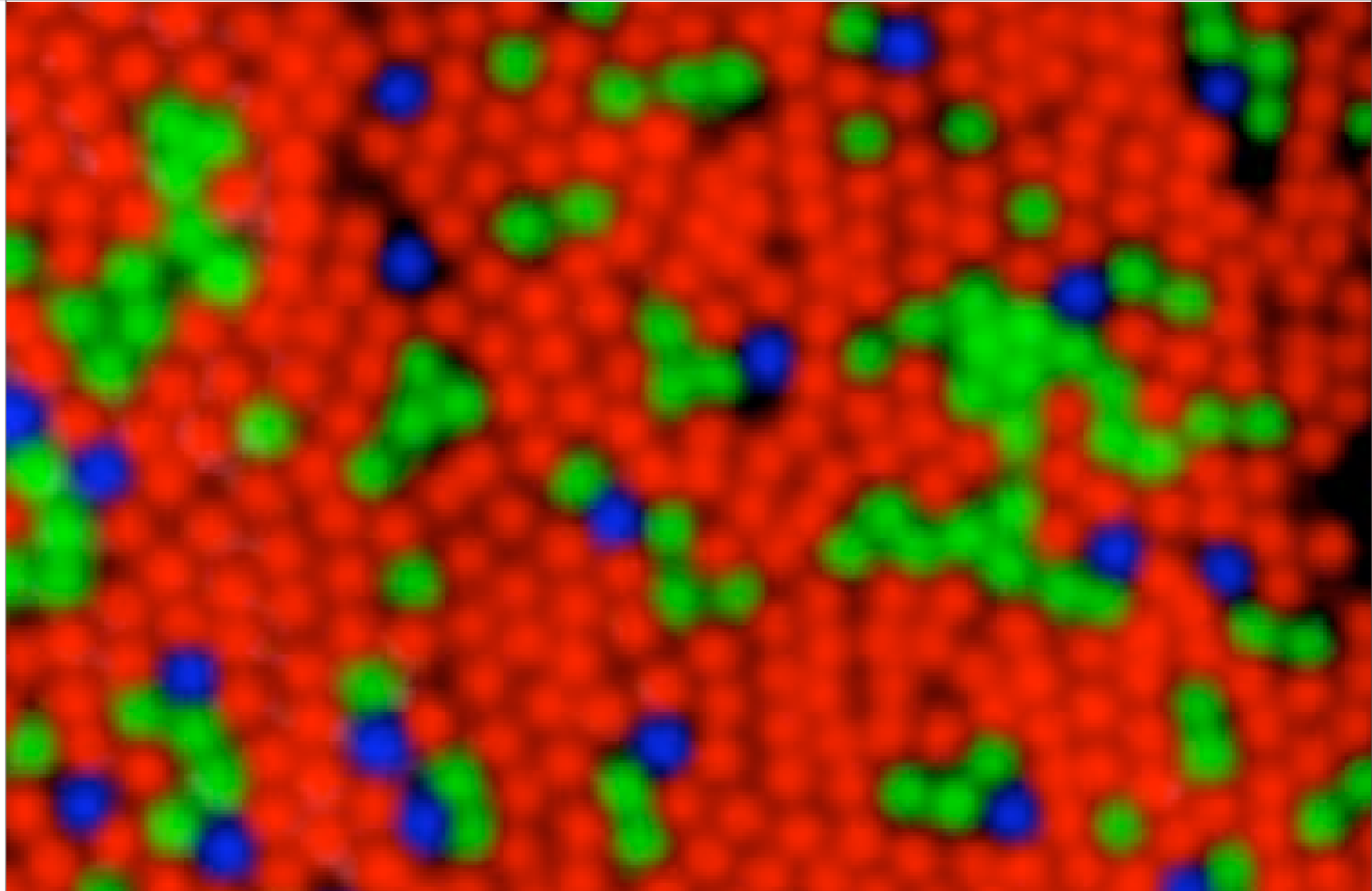
UNIVERSITY of  
ROCHESTER

June 10, 2008



# *Close-up From Living Human Eye Using Adaptive Optics*

*David Williams*



# Elissa L. Newport

George  
Eastman  
Professor of  
Brain and  
Cognitive  
Sciences and  
Linguistics





# *Grammar Similarities in Spoken and Signed Languages*

*Elissa L. Newport*

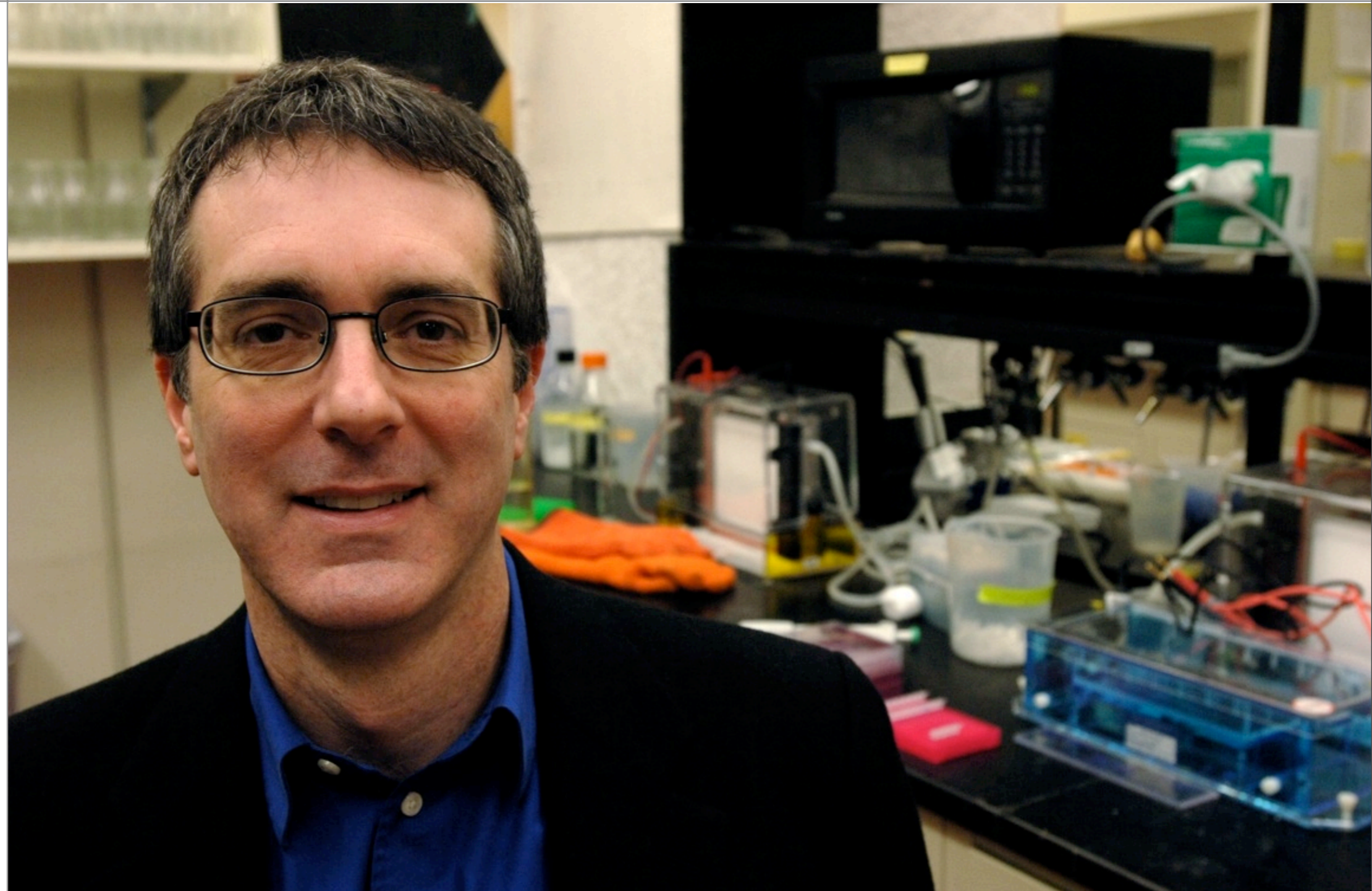


UNIVERSITY of  
ROCHESTER

June 10, 2008

# H. Allen Orr

University  
Professor and  
Shirley Cox  
Kearns  
Professor of  
Biology





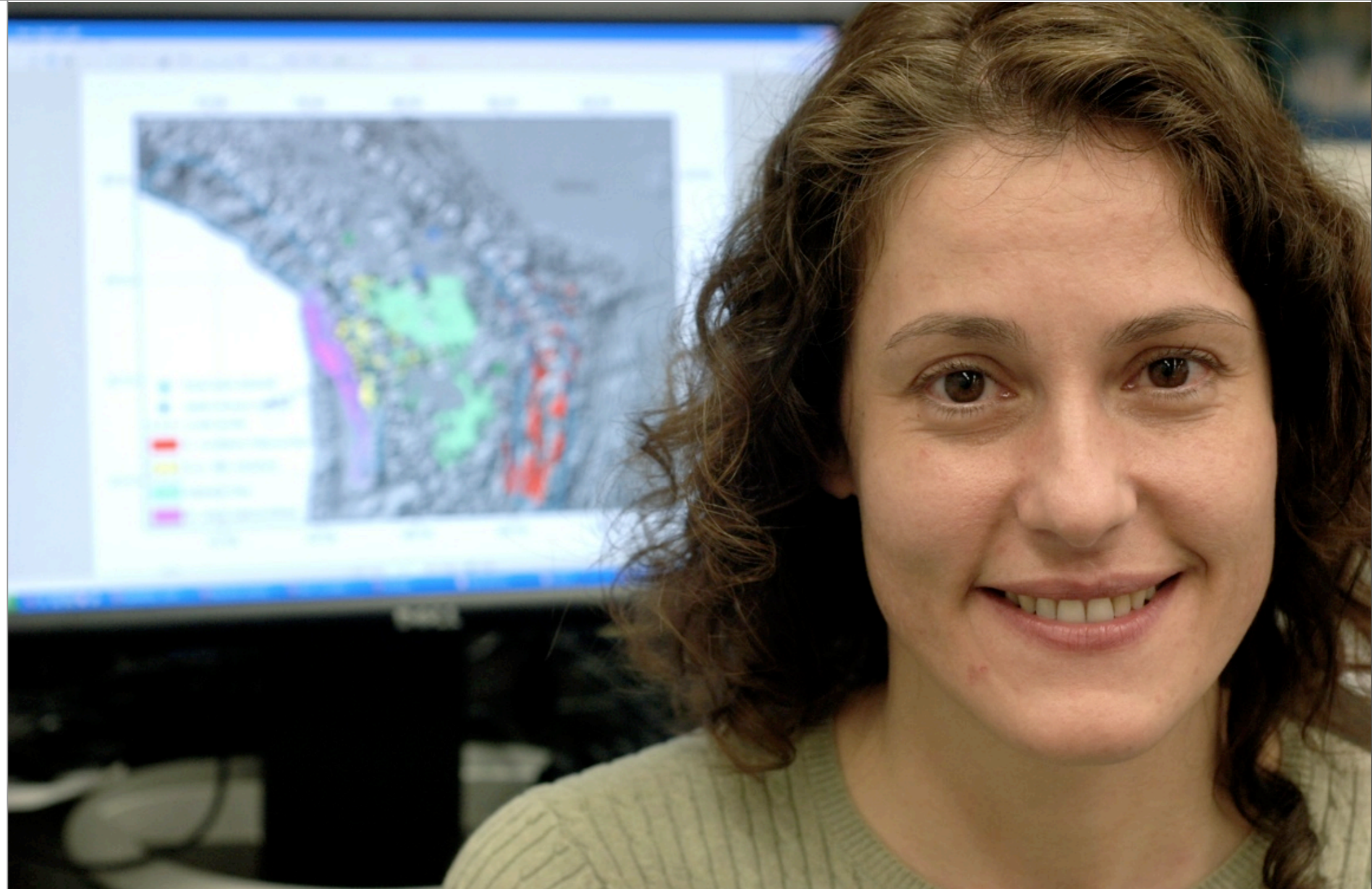
*H. Allen Orr*

# SPECIATION



# Carmala Garzione

Associate  
Professor,  
Department  
of Earth and  
Environmental  
Sciences







## *Garzione High in the Andes*

*Carmala Garzione*



# Mark Bocko

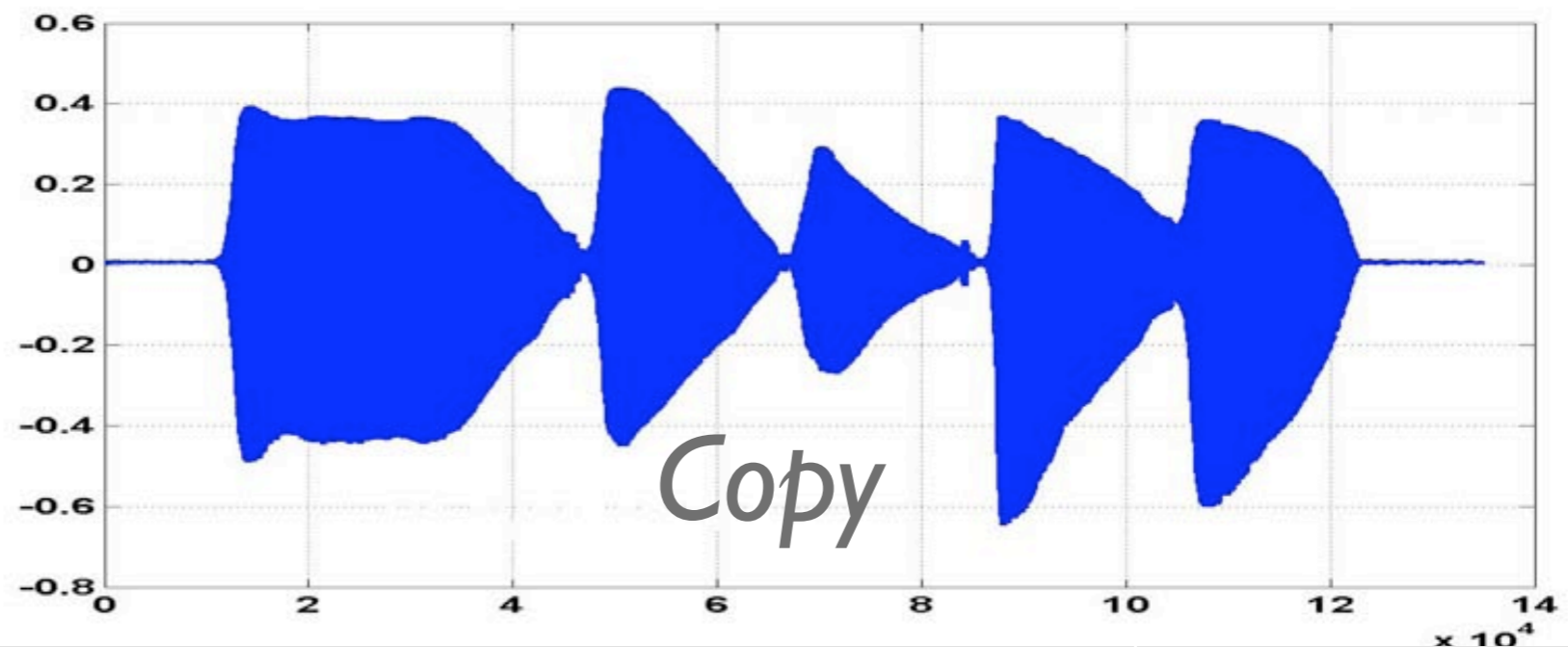
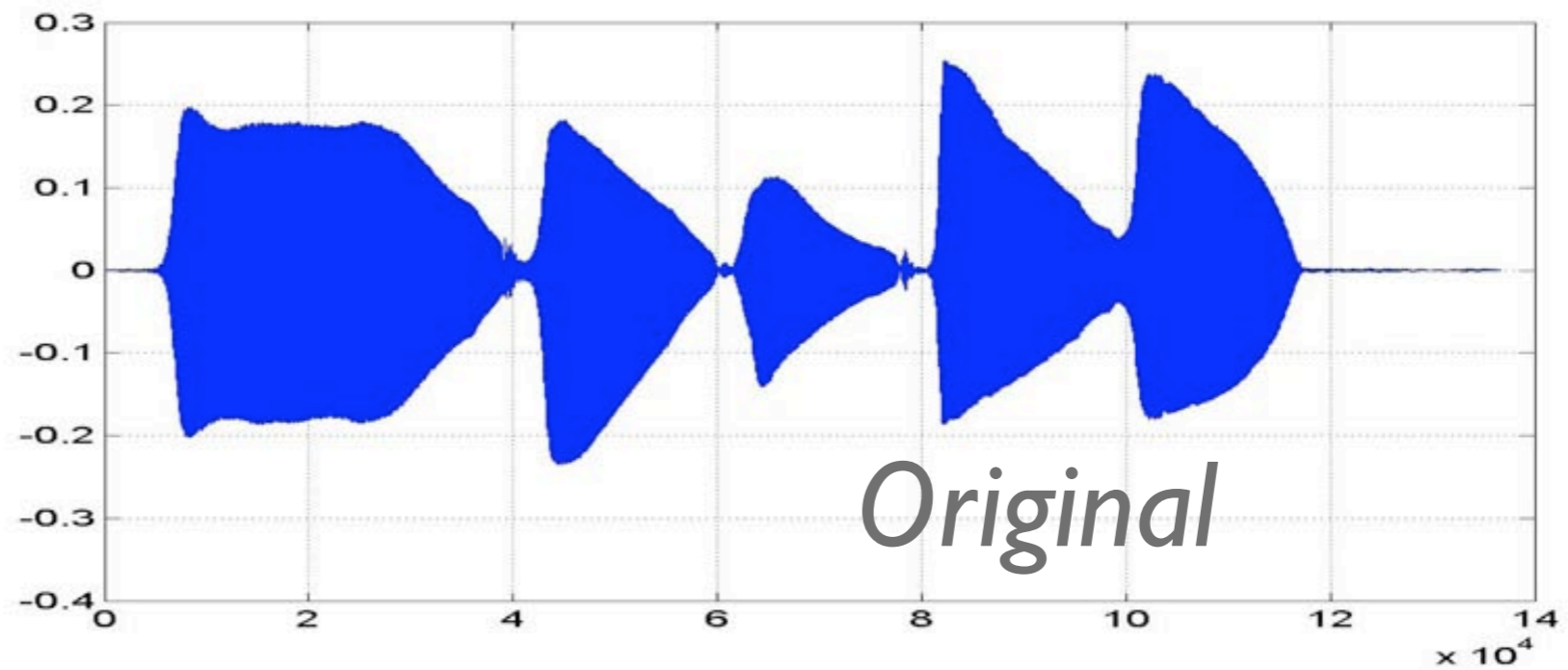
Professor of  
Electrical and  
Computer  
Engineering





# Recreating Real-world Instruments on the Computer

Mark Bocko



# Judith Smetana

Professor of  
Psychology





# *Cultural Differences in Adolescent Relationships*

*Judith Smetana*



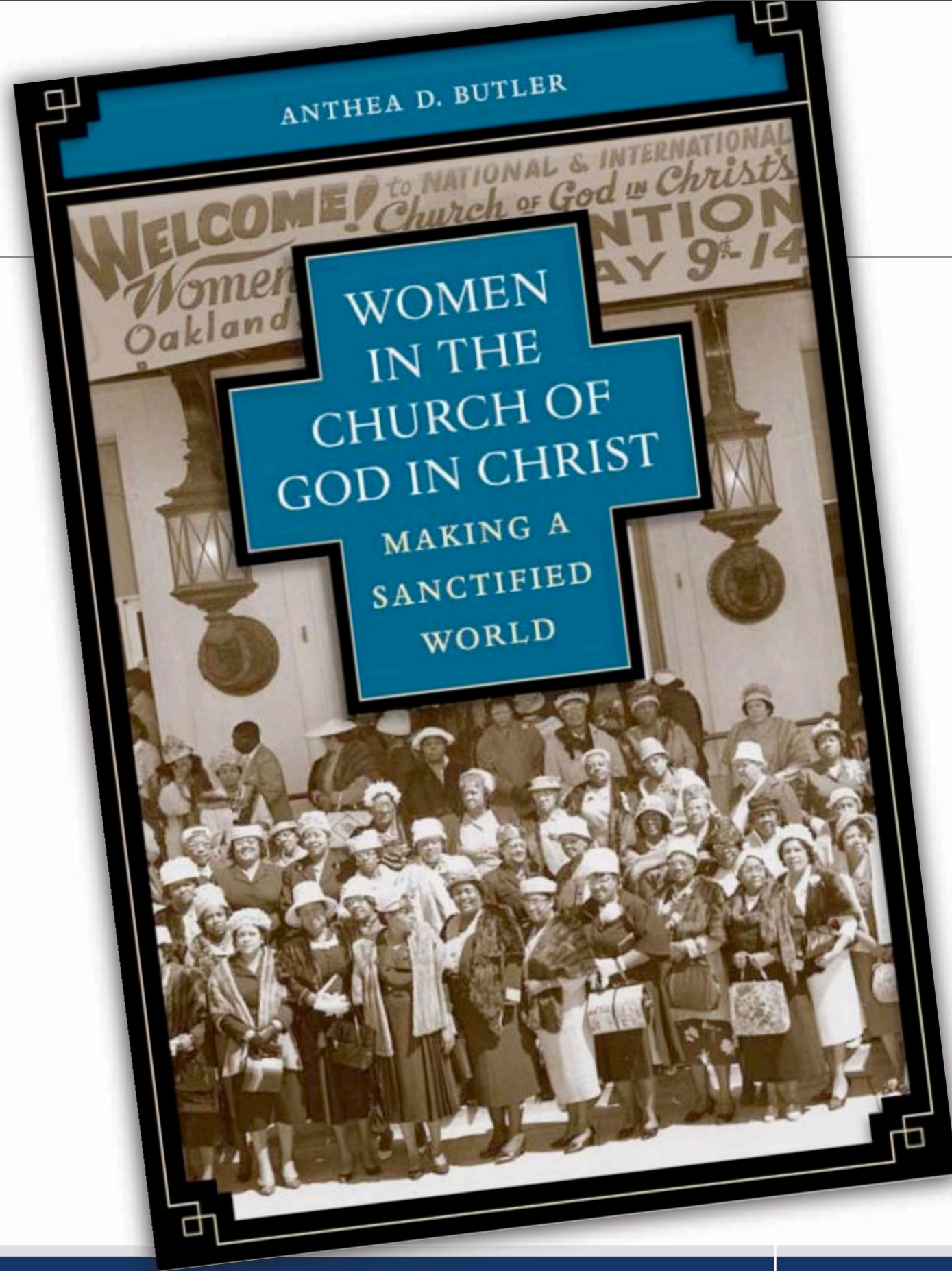
# Anthea Butler

Assistant  
Professor of  
Religion





Anthea Butler



# Joanna Scott

Roswell Smith  
Burrows  
Professor of  
English

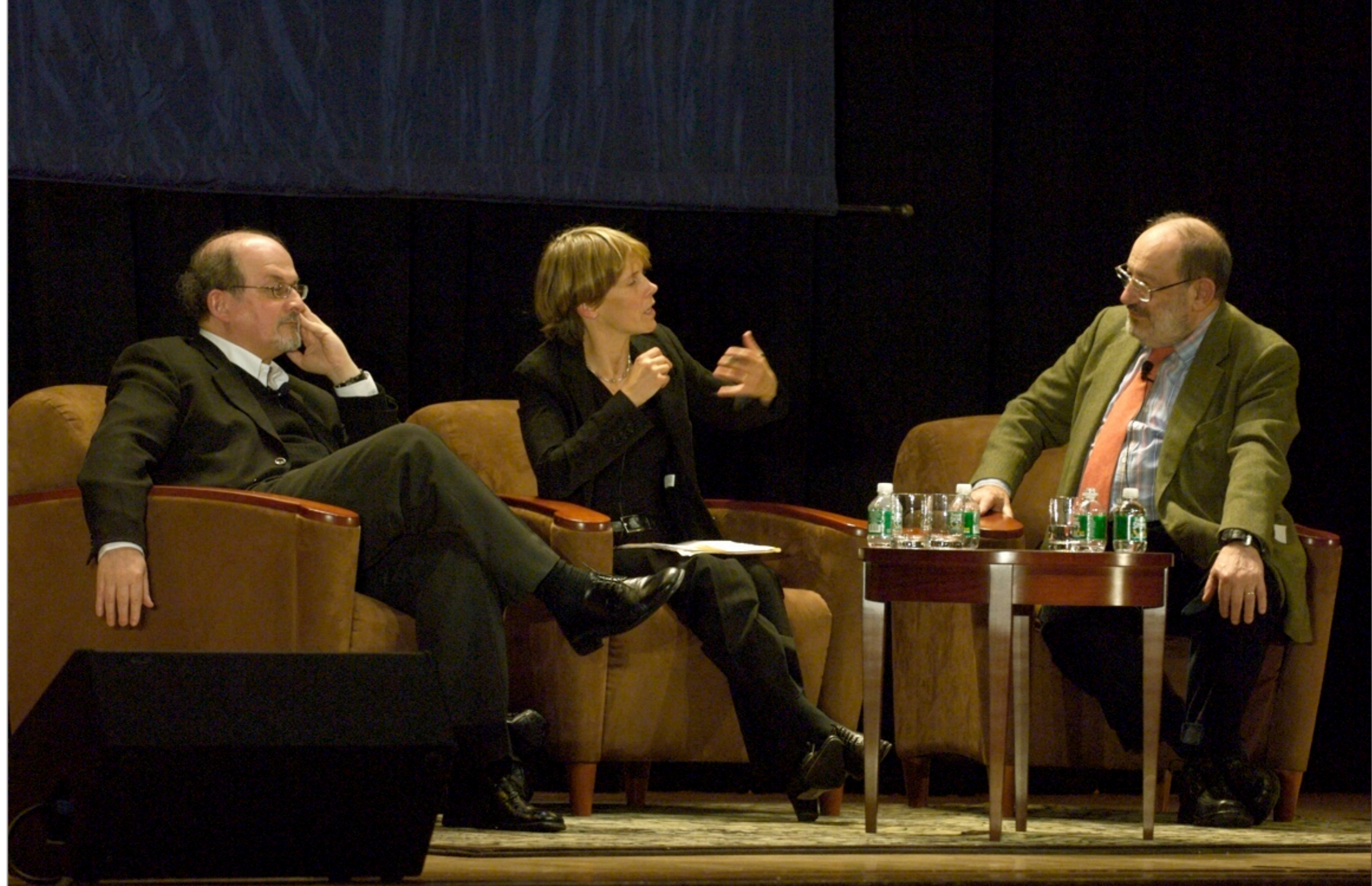






# *Open Letter Hosts PEN World Voices Festival with Salman Rushdie, Joanna Scott, and Umberto Eco—May 1, 2008*

*Joanna Scott*





UNIVERSITY *of*  
ROCHESTER  
MEDICAL CENTER

June 10, 2008

# Lynne Maquat

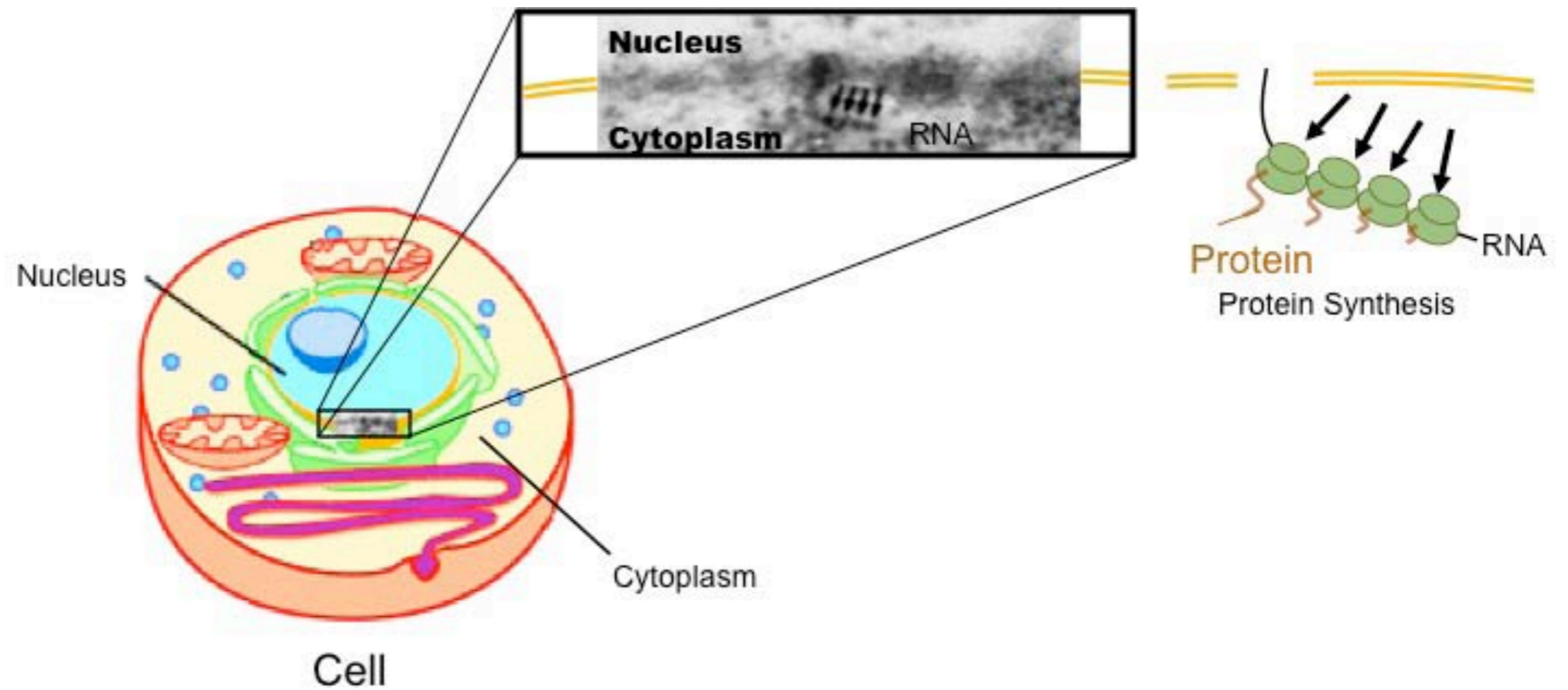
J. Lowell  
Orbison  
Endowed  
Chair and  
Professor of  
Biochemistry  
And Biophysics  
and of  
Oncology





# Microscopic Protein-Synthesis Machines on RNA

Lynne Maquat



# John Treanor

Professor of  
Medicine and  
Chief of the  
Infectious  
Diseases  
Division



UNIVERSITY of  
**ROCHESTER**  
MEDICAL CENTER

June 10, 2008



*John Treanor*

## Bird Flu Vaccine



# Craig Jordan

Associate  
Professor of  
Medicine and  
Biomedical  
Genetics and  
Director of the  
Hematologic  
Malignancies  
Translational  
Research  
Program at the  
James P.  
Wilmot  
Cancer Center

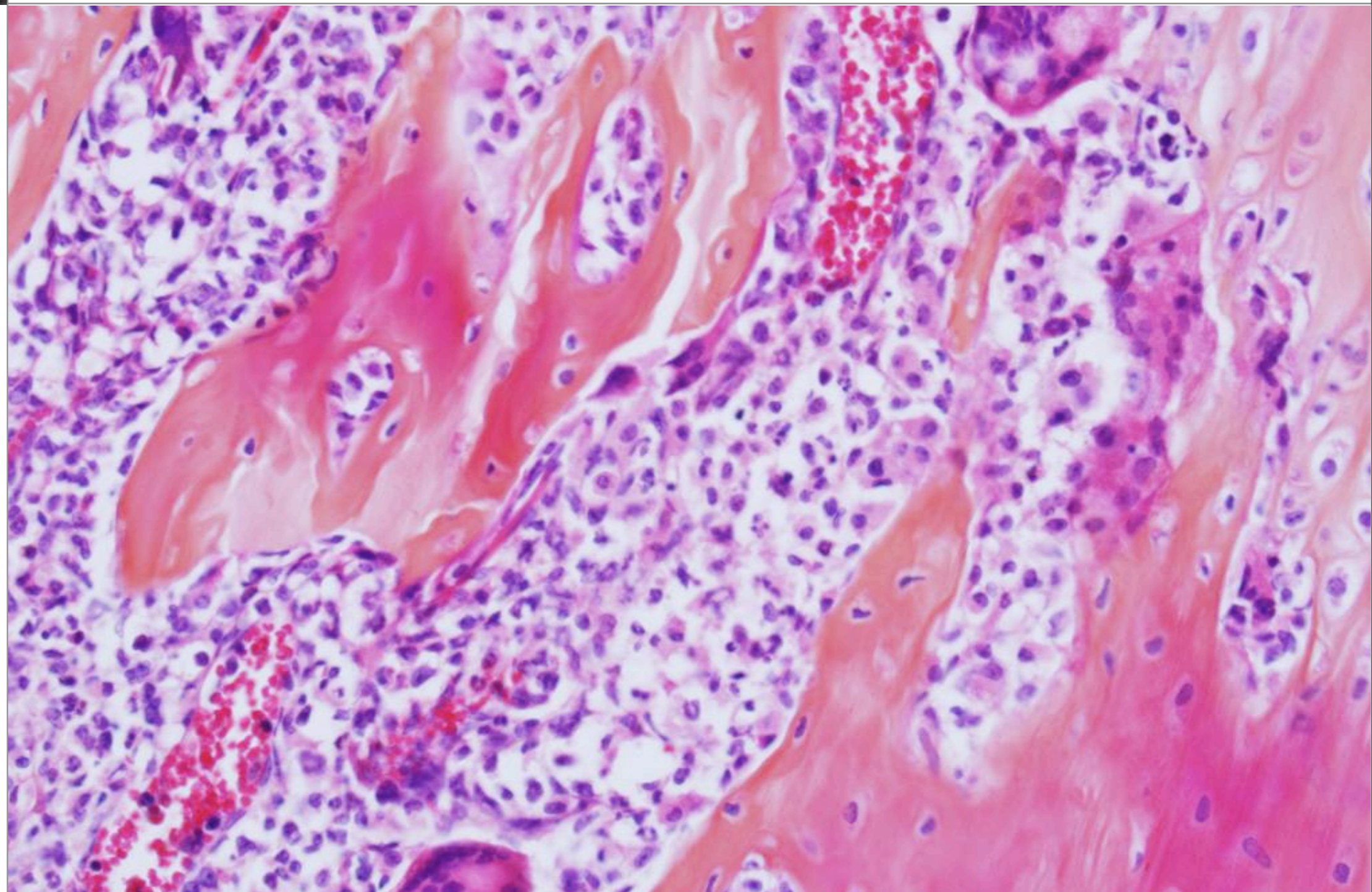


Photo by joebellphoto.com



# Leukemia Stem Cells

*Craig Jordan*





# Maiken Nedergaard

Professor of  
Neurosurgery  
and  
Co-Director of  
the Center  
for Translational  
Neuromedicine



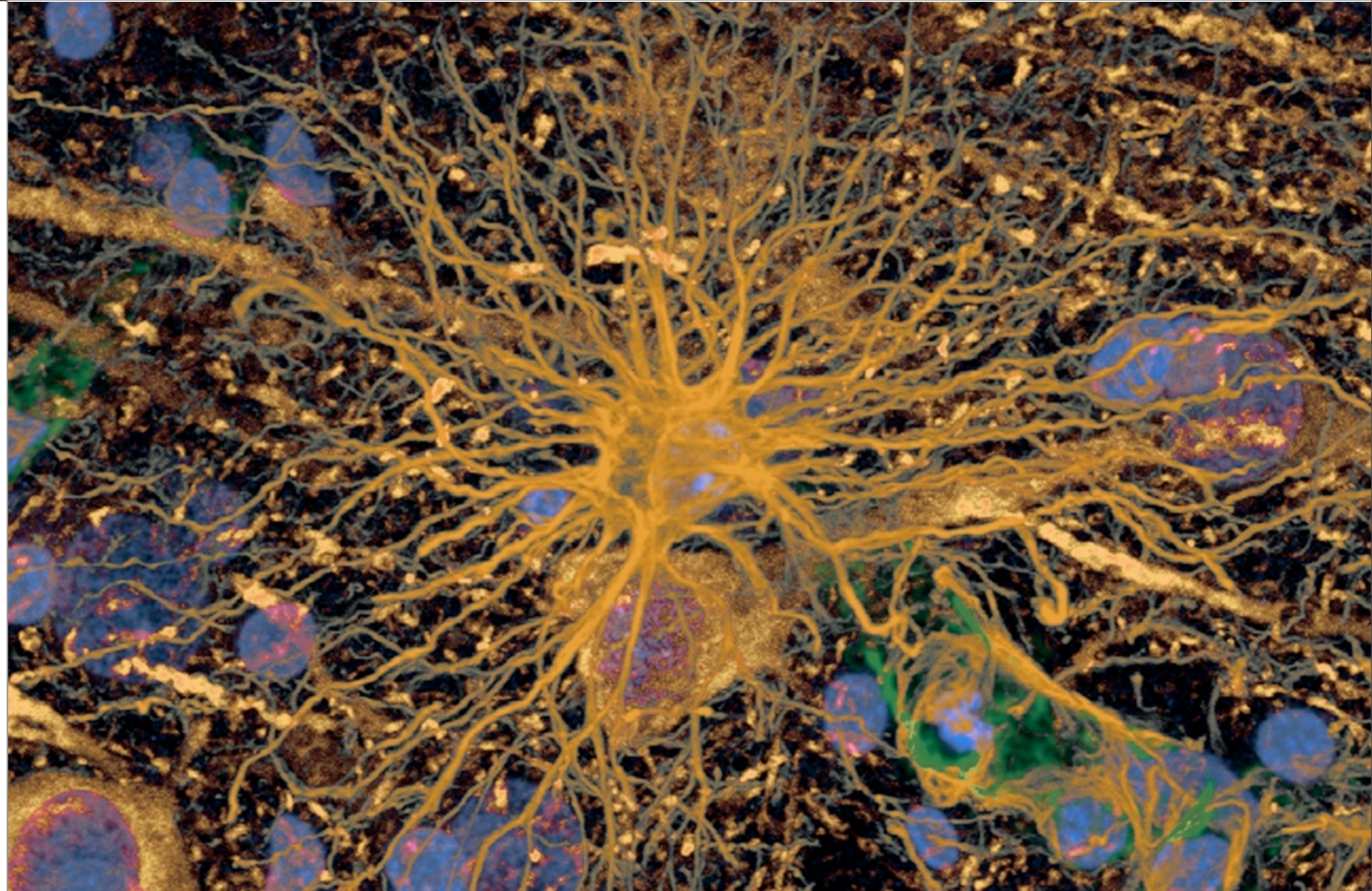
UNIVERSITY of  
**ROCHESTER**  
MEDICAL CENTER

June 10, 2008



# Astrocytes

*Maiken  
Nedergaard*



UNIVERSITY of  
**ROCHESTER**  
MEDICAL CENTER

June 10, 2008

# Harriet Kitzman

Associate  
Dean for  
Research,  
Professor of  
Nursing and  
Pediatrics, and  
Director of  
the Center for  
Research and  
Evidence-  
Based Practice  
at the School  
of Nursing





# Nursing Family Partnership

*Harriet Kitzman*





EASTMAN  
SCHOOL OF MUSIC  

---

UNIVERSITY *of* ROCHESTER

June 10, 2008

# Hans Davidsson

Professor  
of Organ



**EASTMAN**  
SCHOOL OF MUSIC  
UNIVERSITY of ROCHESTER

June 10, 2008



*Hans Davidsson*



**EASTMAN**  
SCHOOL OF MUSIC  
UNIVERSITY of ROCHESTER

June 10, 2008

# Brad Lubman

Associate  
Professor of  
Conducting  
and  
Ensembles,  
and Director  
of Eastman  
Musica Nova



June 10, 2008





# *Electro-acoustic Composition*

*Brad Lubman*



June 10, 2008



WARNER  
SCHOOL OF EDUCATION  

---

UNIVERSITY *of* ROCHESTER

June 10, 2008

# Lucia French

Earl B. Taylor  
Professor of  
Education



**WARNER**  
SCHOOL OF EDUCATION  
UNIVERSITY of ROCHESTER

June 10, 2008



*Lucia French*

# ScienceStart!



**WARNER**  
SCHOOL OF EDUCATION  
UNIVERSITY of ROCHESTER

June 10, 2008



SIMON  
GRADUATE SCHOOL OF BUSINESS  

---

UNIVERSITY *of* ROCHESTER

June 10, 2008

# Jerold L. Zimmerman

Ronald L.  
Bittner  
Professor of  
Business  
Administration  
and Professor  
of Accounting



**SIMON**  
GRADUATE SCHOOL OF BUSINESS  
UNIVERSITY of ROCHESTER

June 10, 2008



# Effective Decision-making for Accountants and Business Managers

Jerold L. Zimmerman



	<u>Treas. Sec. Speech</u>		<u>Sen. Debate &amp; Bush</u>		<u>Republicans Retreat</u>		<u>Congress Agrees</u>	
	Estimate	P-value	Estimate	P-value	Estimate	P-value	Estimate	P-value
Nonaudit Gindex	0.0053	0.4260	0.0011	0.0000	-0.0578	0.0080	0.0304	0.0130
Bus_lines	0.0000	0.4430	-0.0020	0.0000	0.0036	0.0000	0.0028	0.0000
Foreign	0.0006	0.2360	-0.0034	0.0040				
Incentive	-0.0016	0.1990	-0.0047	0.0760				
	-0.0004	0.4520	0.0084	0.1150	0.0152	0.0520		
Adj. R <sup>2</sup>	0.27%		16.77%		13.44%		11.21%	



# G. William Schwert

Distinguished  
University  
Professor and  
Professor of  
Finance and  
Statistics



**SIMON**  
GRADUATE SCHOOL OF BUSINESS  
UNIVERSITY of ROCHESTER

June 10, 2008





# The Pricing of New Stock Offerings

G. William Schwert

Symbol	Price	Change
FCS	257.60	-4.39
FFH	21.90	-0.41
FDO	26.31	0.20
FNM	79.85	0.15
FRT	37.05	0.15
FII	91.55	1.61
FDX	15.99	-0.24
FNF	41.15	0.90
FIS	32.50	-0.90
FAF	10.02	0.40
FHN	78.54	0.78
FE	28.55	0.66
FLO	134.48	-1.68
FLS	185.51	1.30
FLR	44.71	-0.63
FMX	14.72	0.29
FL	6.46	-0.22
F	79.45	-2.27
FDG	40.87	0.06
FCEA	35.15	-0.52
FRX	69.88	-1.48
FST	13.86	-0.13
FIG	62.37	0.20
FO	70.02	-1.56
FCL	29.32	-0.18
FTE	102.12	0.78
FIN	21.07	-0.71
FIB	111.26	-2.65
FIA	75.29	0.14
FIB	111.26	-2.65
FIA	75.29	0.14



**SIMON**  
GRADUATE SCHOOL OF BUSINESS  
UNIVERSITY of ROCHESTER

June 10, 2008

# The University of Rochester and the Community



UNIVERSITY of  
**ROCHESTER**

June 10, 2008

# Growth in External Research Funding

Millions of Dollars



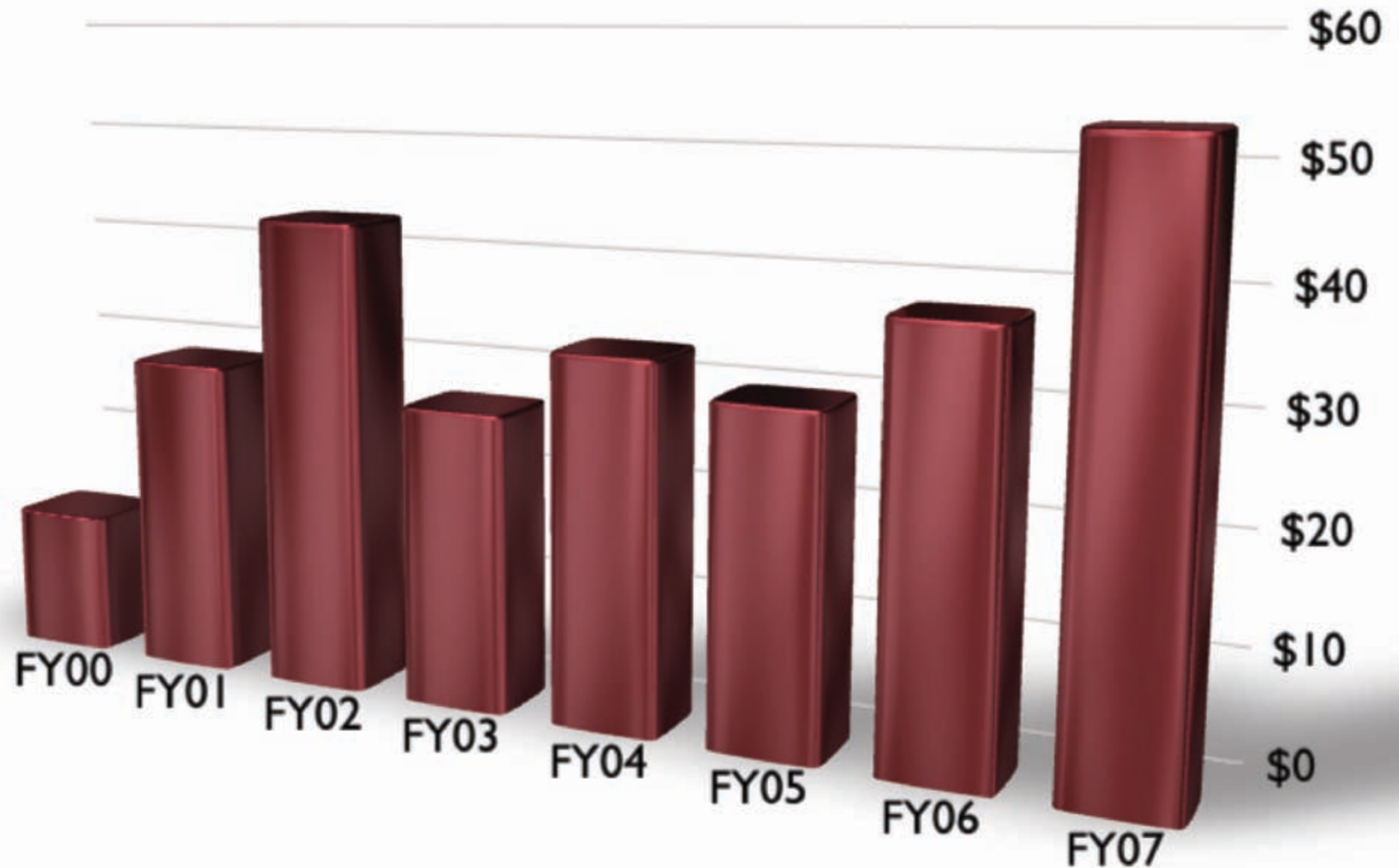
# Center for Electronic Imaging Systems



# Technology Transfer

## Revenue

Millions of Dollars



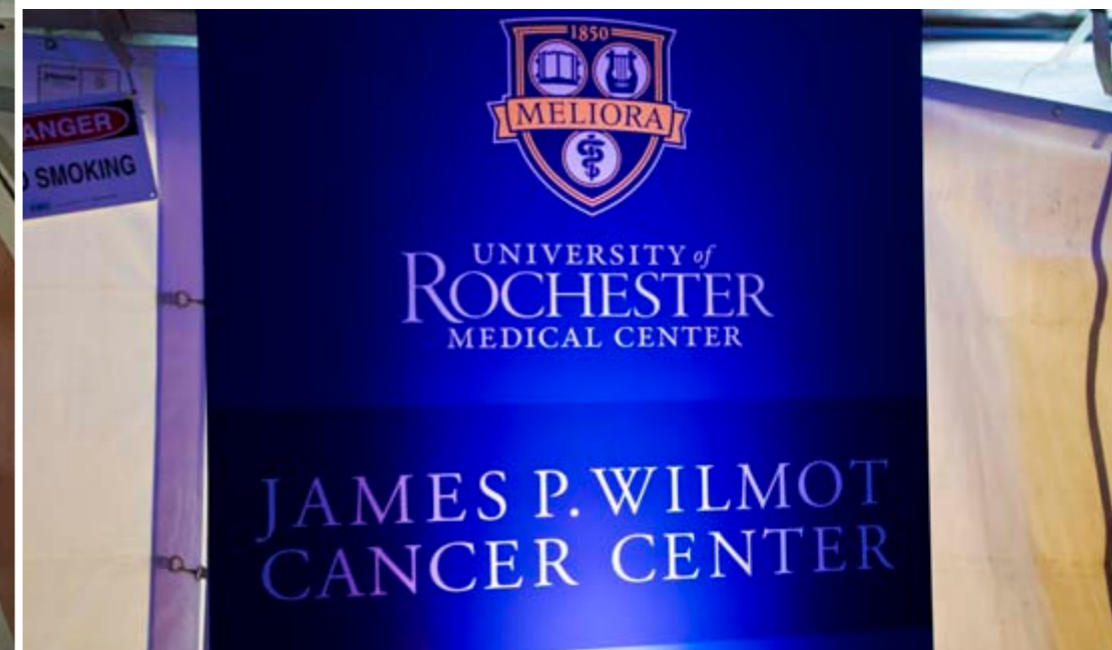
# Aab Cardiovascular Research Institute



# Robert B. Goergen Hall



# James P. Wilmot Cancer Center





# Laboratory for Laser Energetics



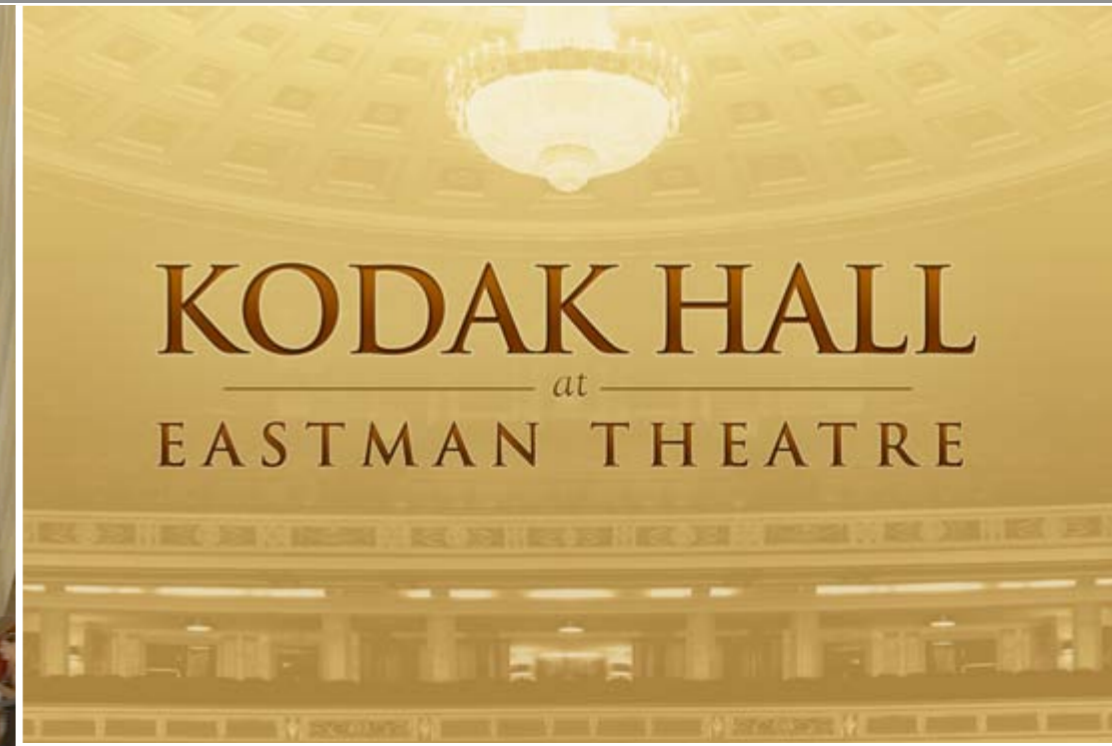
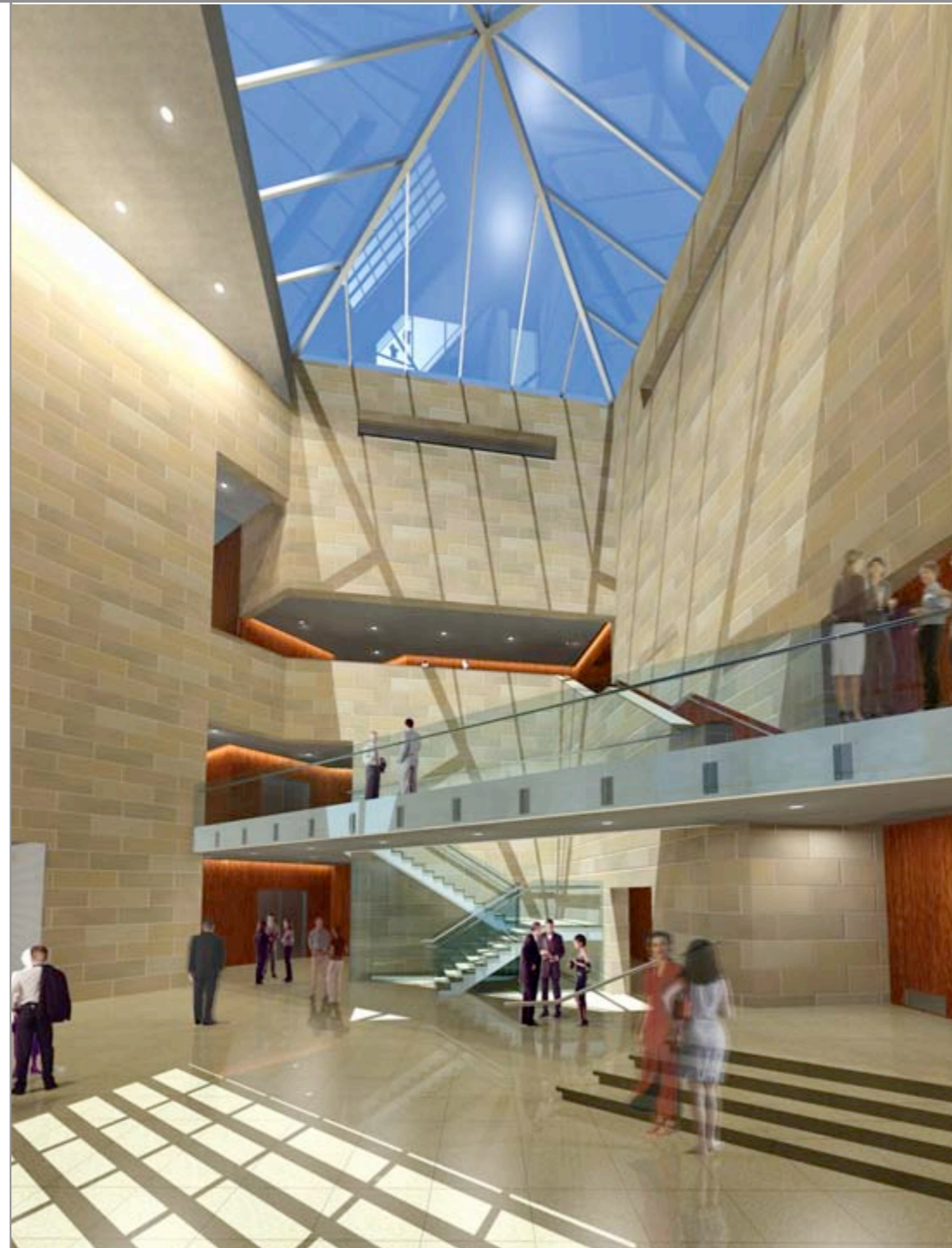
UNIVERSITY of  
ROCHESTER

June 10, 2008

# Future Clinical and Translational Sciences Building



# Eastman Theatre



# Brooks Landing



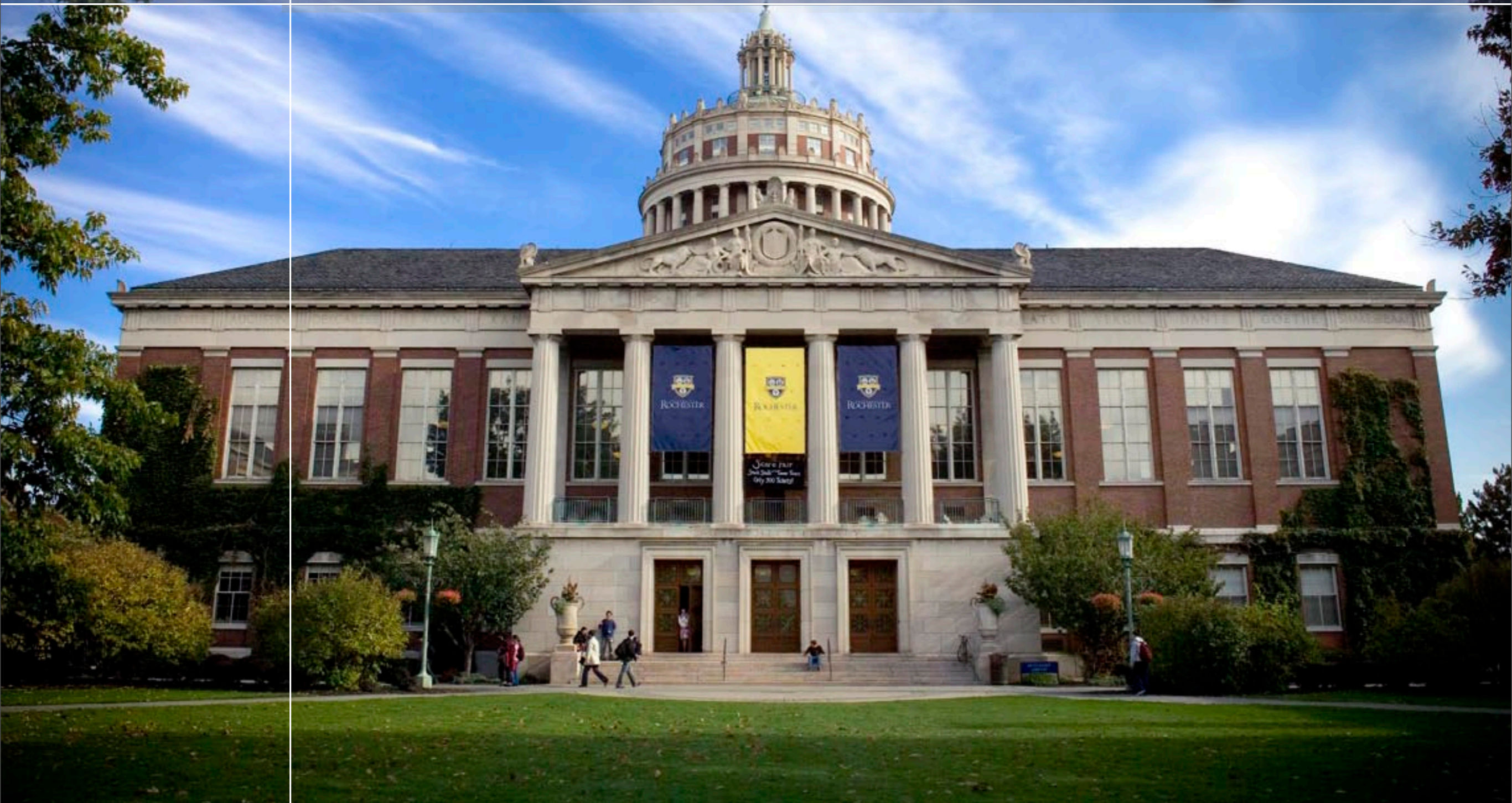
# Riverview



# Rochester Promise



# The Power of Transforming Ideas



# Ching Tang

Doris Johns  
Cherry  
Professor of  
Chemical  
Engineering  
(and Chemistry)







UNIVERSITY of  
ROCHESTER

June 10, 2008