



# *Faculty Senate Address*

Joel Seligman  
September 16, 2014

# Andrew Ainslie



# Jamal Rossi



# Jonathan Binstock



# Tom Farrell



# Gloria Culver



# The Meliora Challenge

\$ 1,108,231,280



# Meliora Challenge: Professorships





# Bradford C. Berk, MD, PhD

## Distinguished Professor Art Moss



# Total Net Assets

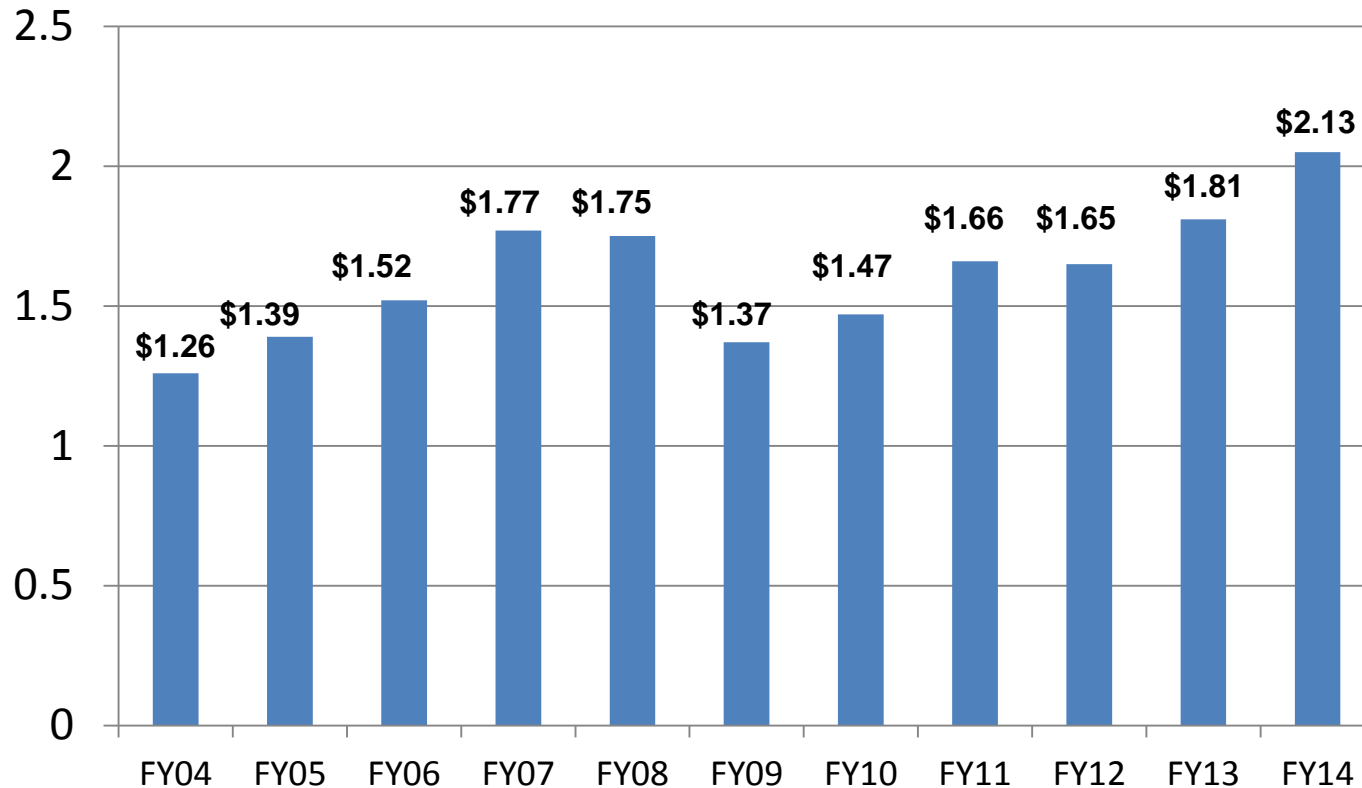


# Strong Memorial Hospital



# University Finances

## Long Term Investment Pool (\$Billions)



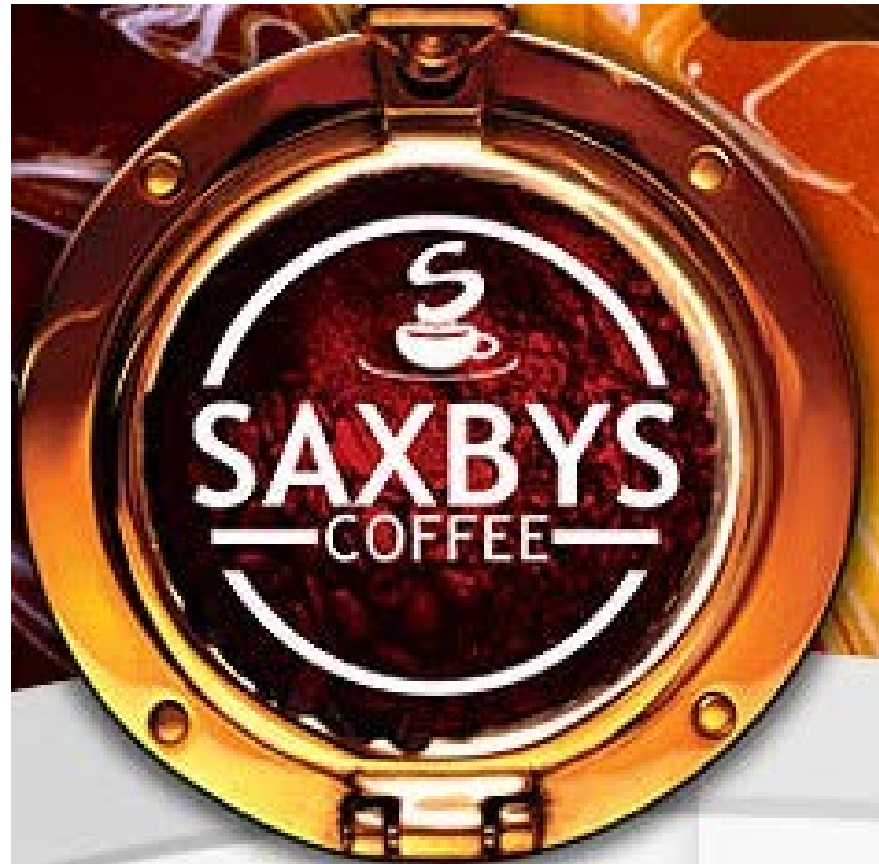
# College Town



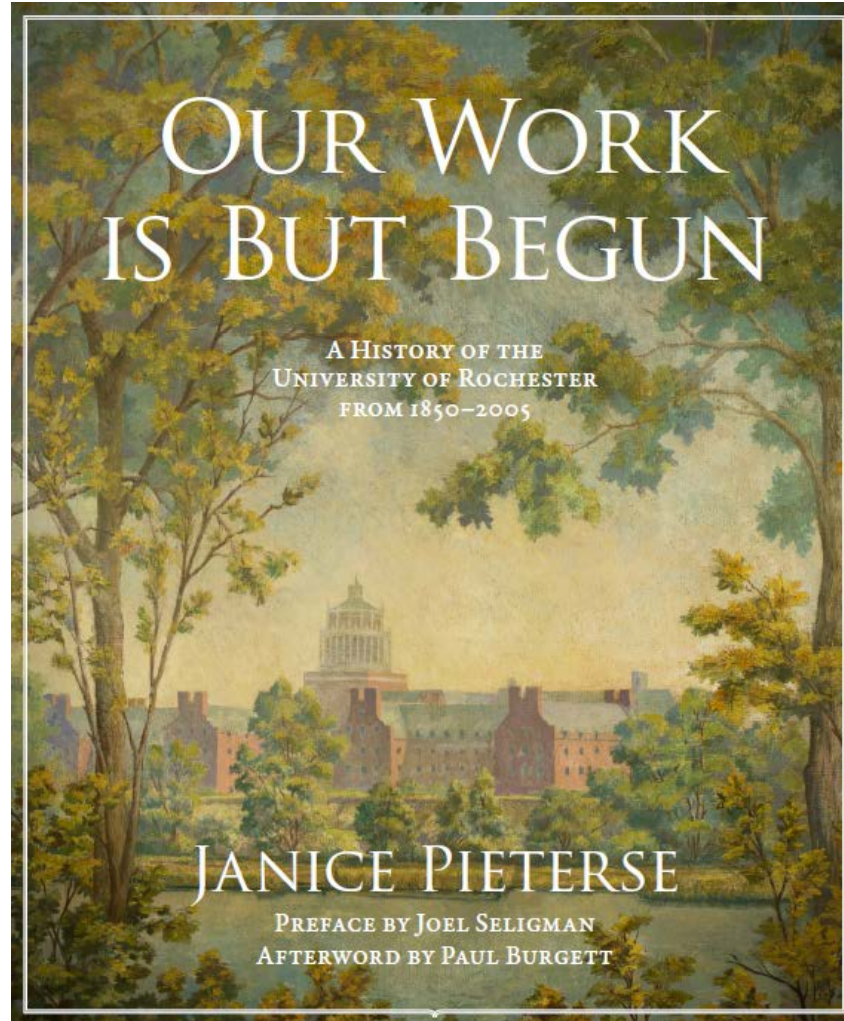
# College Town



# Saxby's Coffee



# Janice Pieterse





# Joanna Scott



# Mt. Hope Lofts



# Hilton Garden Inn



# Constantino's Market



# The Corner Bakery Café



# Jimmy John's



# Insomnia Cookies



# Moe's





# Breathe Yoga



# Hairzoo



# The Creator's Hands



# Canandaigua National Bank



# TIAA-CREF



# Flaum Optical



# Parking Garage



# Office Space





# Paprocki Plaza



# Brooks Crossing



# Morey Hall



# Morey Hall



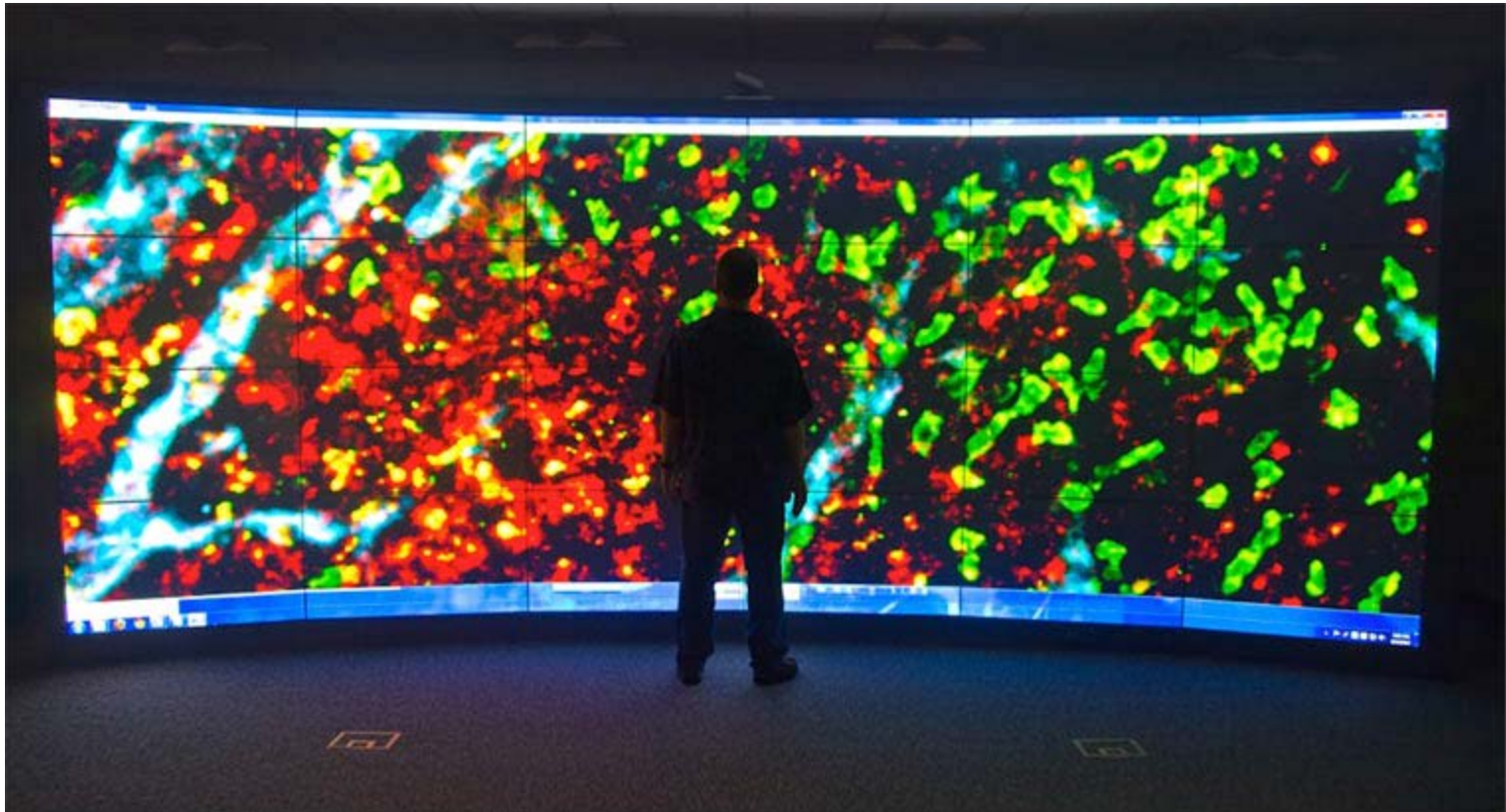
# Dewey 101



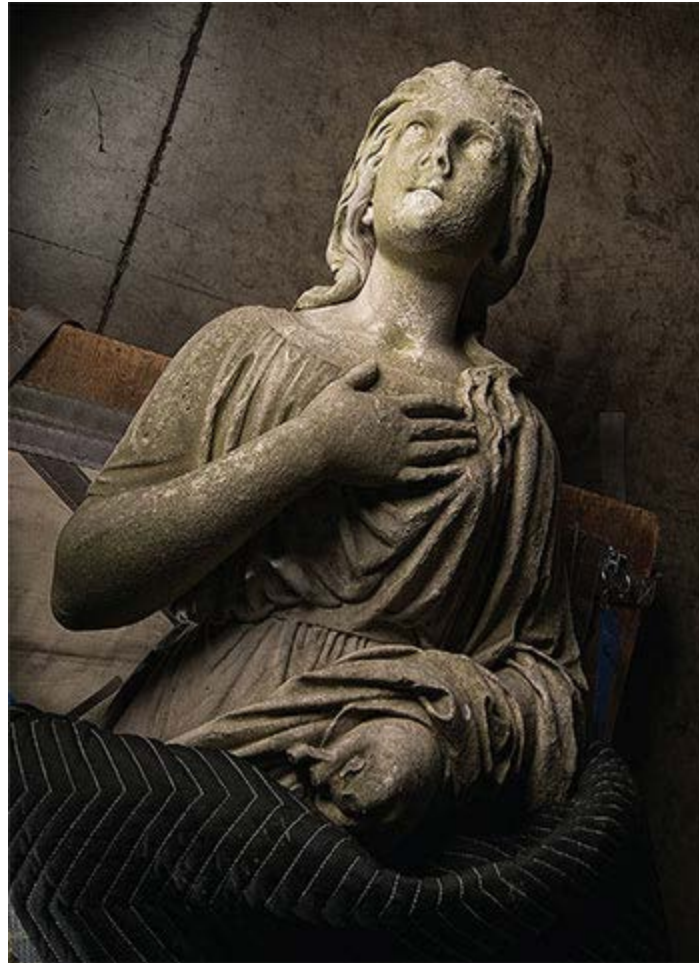
# Gavett Lecture Hall



# VISTA Collaboratory



# Commerce





# Start Up New York



# School of Nursing



**Harriet Kitzman**



**Sally Norton**

# Strong West



# Golisano



# Golisano



# Golisano



# George Alfieris



# College Admissions

Admission Year:	2005	2010	2011	2012	2013	2014
Applicants	11,293	12,711	13,678	14,788	16,156	16,420
Enrolled High School GPA	3.56	3.79	3.81	3.81	3.82	3.81
Enrolled Two-Score Equivalent SAT	1300	1332	1344	1358	1368	1375
Under-represented Minorities	12.2%	13.0%	13.6%	14.5%	16.0%	15.0%
International Students	3.3%	12.3%	16.0%	15.8%	20.7%	23.0%



# African Leadership Academy



# Dining Services



# David Linehan



# Bruce Smoller



# Vera Gorbunova and Andrei Seluanov



# Fred Rogosch



# Deborah Fowell



# Harris Gelbard





# Lynne Maquat



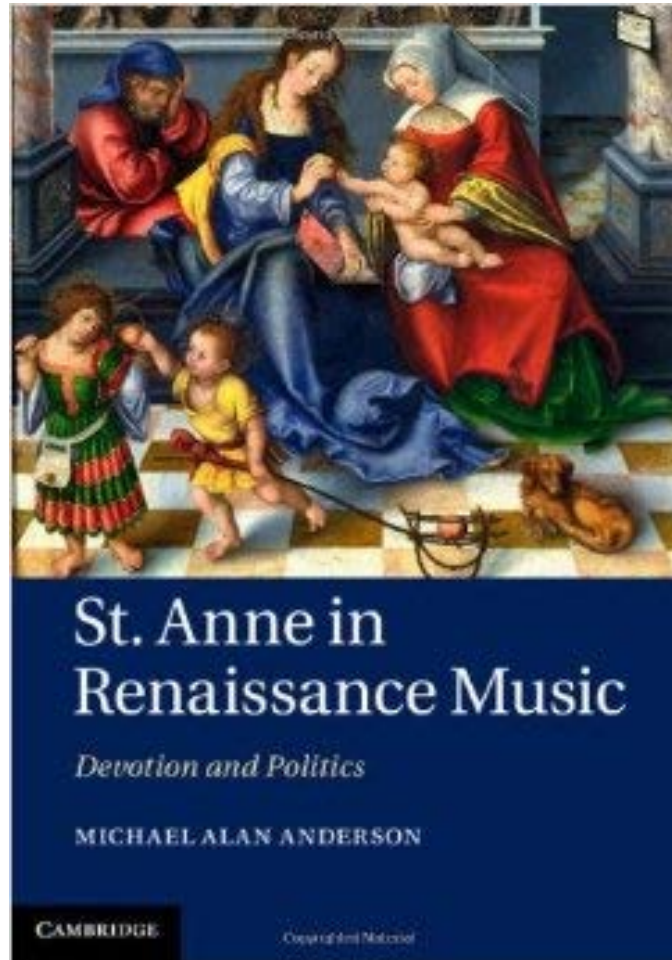
# Gary Morrow



# Jill Halterman



# Michael Alan Anderson



# Douglas Crimp



# Gretchen Birbeck



# Catherine LaVigne



# Fulbright Scholarships



**Anisha Gundewar**



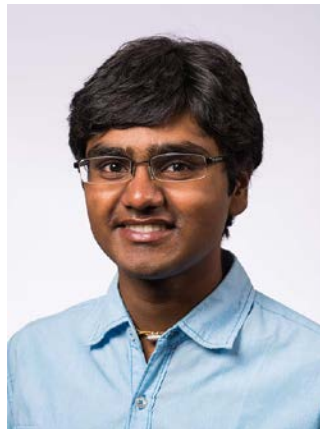
**Erin Slocum**



**Philip Pierick**



**Savannah Benton**



**Shyam Venkateswaran**



**Simone Zehren**



# Academic All-Americans



**Lauren Bailey**



**Adam Pacheck**

# Eastman Musicians Win Downbeat Student Awards



# Student Sexual Misconduct Policy



# Health Plans



***One Year Anniversary:  
2013-2018 Strategic  
Plans***



# East High School



# East High School



**Raffaella Borasi**



**Steve Uebbing**

# East High School





# The Medical Center



# Medical Faculty Group



# Accountable Health Partners

## AHP Community Physician Market

As of July 22, 2014

	Adult PCPs	Pediatricians	Specialists	Total
Monroe County	27	63	159	249
Other Counties	105	10	51	166
URMFG	176	20	1032	1228
Total	308	93	1242	1643

# Regional Growth



# Institute for Innovative Education

**Kathy Rideout**



**Sarah Peyre**



**Mark Taubman**



**David Lambert**

# Medical School Curricular Review



# AS&E Faculty Growth

	2006	2009	2012	2013	2014
Humanities	67	66	75	76	74
Social Sciences	76	79	84	86	83
Sciences	105	106	105	103	114
Engineering	74	79	84	86	91
<b>Total</b>	<b>322</b>	<b>330</b>	<b>348</b>	<b>351</b>	<b>362</b>

# AS&E Progress in Enrollment





# Master's Programs



# Data Science



**Tom Howard**



**Gourab Ghoshal**

# Center of Excellence



# Data Science Programs



# Henry Kautz



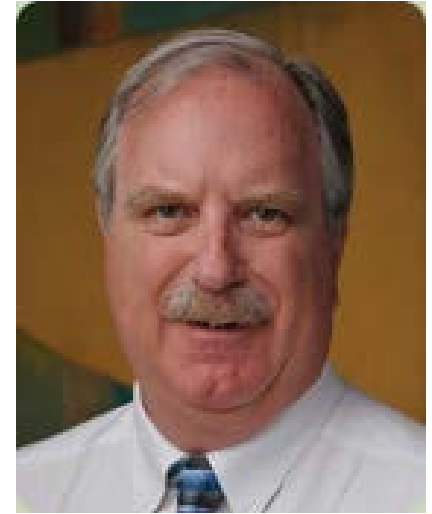
# Data Science Leaders



**Eric Horvitz**



**Oren Etzioni**



**Richard  
Scheuermann**

# Data Science Building



# Campus Master Plan



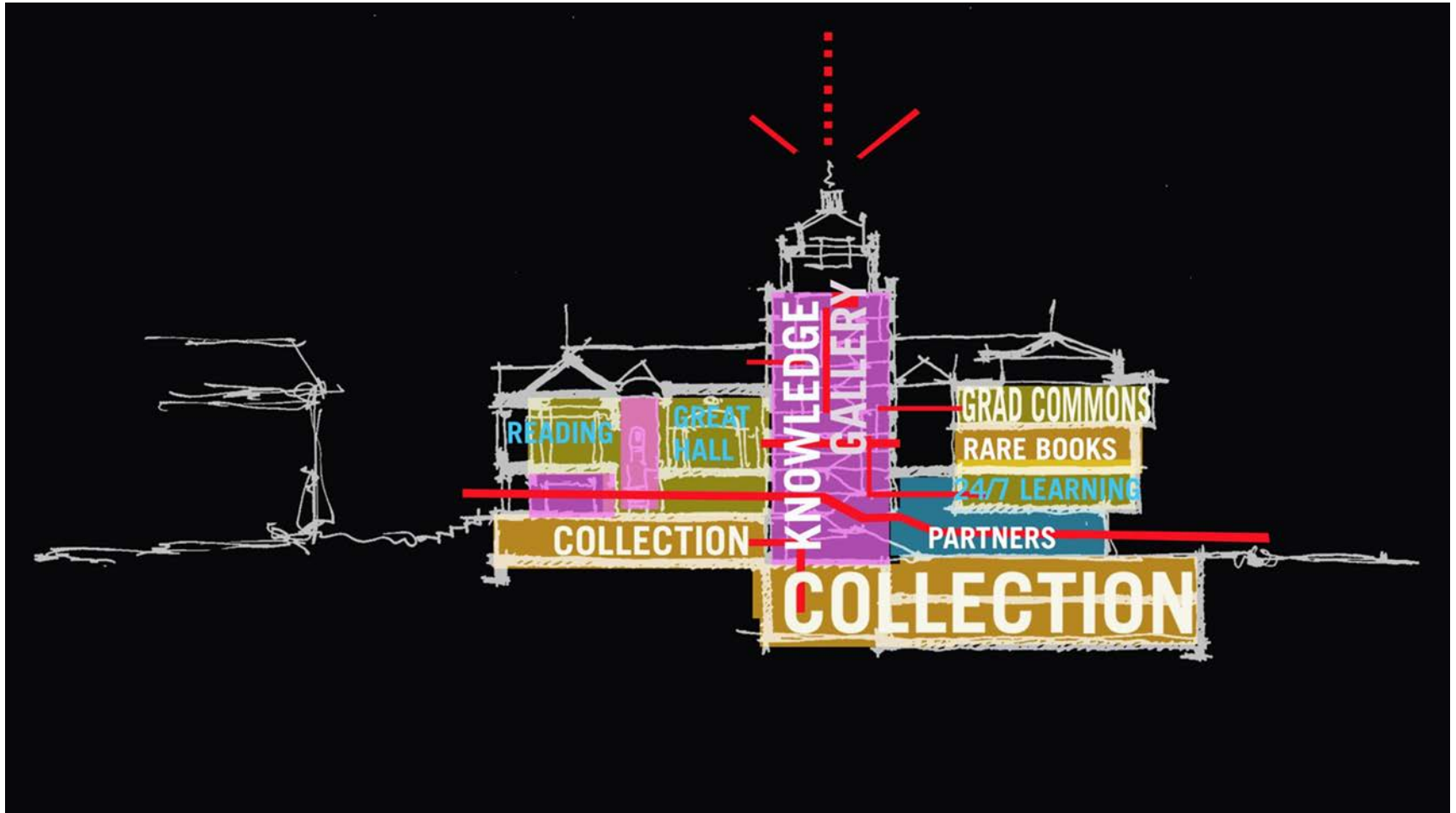
UNIVERSITY OF ROCHESTER

CAMPUS MASTER PLAN





# River Campus Libraries



# Specialized Learning Spaces



# River Campus Libraries



# Rush Rhees Library



