

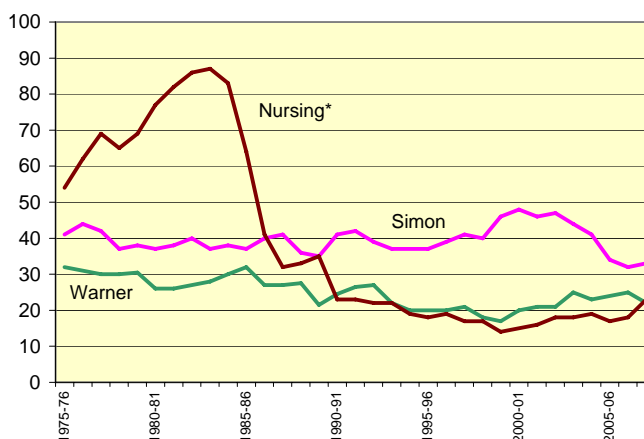
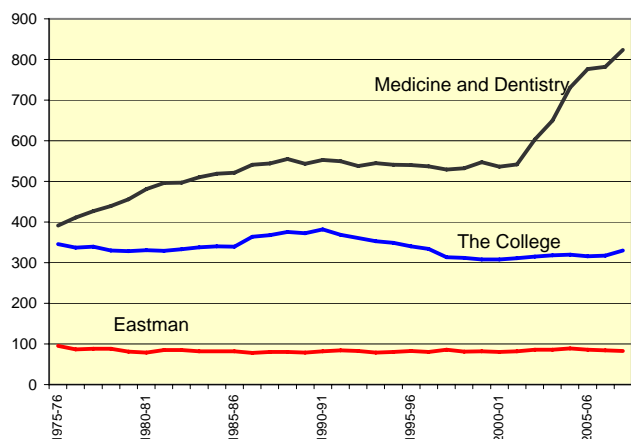
UNIVERSITY OF ROCHESTER
Full-time Tenure-track Faculty*

SCHOOL	1975-76	1976-77	1977-78	1978-79	1979-80	1980-81	1981-82	1982-83	1983-84	1984-85	1985-86
Arts & Sciences	300	289	291	283	282.5	287	286	281	288	291	288
Engineering & Applied Sciences	46	48	48	47	46	44	43	52	50	49	51
The College Subtotal	346	337	339	330	329	331	329	333	338	340	339
Simon Graduate School of Business	41	44	42	37	38	37	38	40	37	38	37
Warner Graduate School of Education & Human Development	32	31	30	30	30.5	26	26	27	28	30	32
Eastman School of Music	95	87	88	88	81	79	85	85	82	82	82
School of Medicine & Dentistry	391	411	427	439	456	481	496	497	510	519	521
School of Nursing	54	62	69	65	69	77	82	86	87	83	64
University Total	959	972	995	989	1,003	1,031	1,056	1,068	1,082	1,092	1,075

SCHOOL	1986-87	1987-88	1988-89	1989-90	1990-91	1991-92	1992-93	1993-94	1994-95	1995-96	1996-97
Arts & Sciences	309	306	314.5	311.5	320.5	306.5	301	294	291	284	279
Engineering & Applied Sciences	55	62	61	61	61	62	60	59	58	56	55
The College Subtotal	364	368	376	373	382	369	361	353	349	340	334
Simon Graduate School of Business	40	41	36	35	41	42	39	37	37	37	39
Warner Graduate School of Education & Human Development	27	27	27.5	21.5	24.5	26.5	27	22	20	20	20
Eastman School of Music	78	80	80	79	82	84	83	79	80	83	80
School of Medicine & Dentistry	541	544	555	543	553	550	538	545	541	540	537
School of Nursing	41	32	33	35	23	23	22	22	19	18	19
University Total	1,091	1,092	1,107	1,086	1,105	1,094	1,070	1,058	1,046	1,038	1,029

SCHOOL	1997-98	1998-99	1999-00	2000-01	2001-02	2002-03	2003-04	2004-05	2005-06	2006-07	2007-08
Arts & Sciences	260	261	258	259	258	258	261	260	259	259	270
Engineering & Applied Sciences	53	51	50	49	53	57	57	60	57	58	60
The College Subtotal	313	312	308	308	311	315	318	320	316	317	330
Simon Graduate School of Business	41	40	46	48	46	47	44	41	34	32	33
Warner Graduate School of Education & Human Development	21	18	17	20	21	21	25	23	24	25	22
Eastman School of Music	86	81	82	80	82	86	86	89	86	84	83
School of Medicine & Dentistry	529	532	547	536	542	603	650	731	776	782	824
School of Nursing	17	17	14	15	16	18	18	19	17	18	23
University Total	1,007	1,000	1,014	1,007	1,018	1,090	1,141	1,223	1,253	1,258	1,315

*Full-time tenure-track faculty includes faculty who are tenured, and those in track towards tenure.
 School of Medicine and Dentistry counts are submitted by that school's dean's office.



*Decrease in Nursing faculty (1984 through 1987) is due to reclassification of faculty into clinical and tenure tracks