



UNIVERSITY *of*  
ROCHESTER

## 2007-08 FACT BOOK



OFFICE OF THE PROVOST  
INSTITUTIONAL RESEARCH  
203 WALLIS HALL  
ROCHESTER, NY 14627-0021  
585-275-8063

© 2008 UNIVERSITY OF ROCHESTER

# University of Rochester

## Fact Book 2007-08

[http://www.rochester.edu/provost/ir/2007-08\\_factbook.html](http://www.rochester.edu/provost/ir/2007-08_factbook.html)

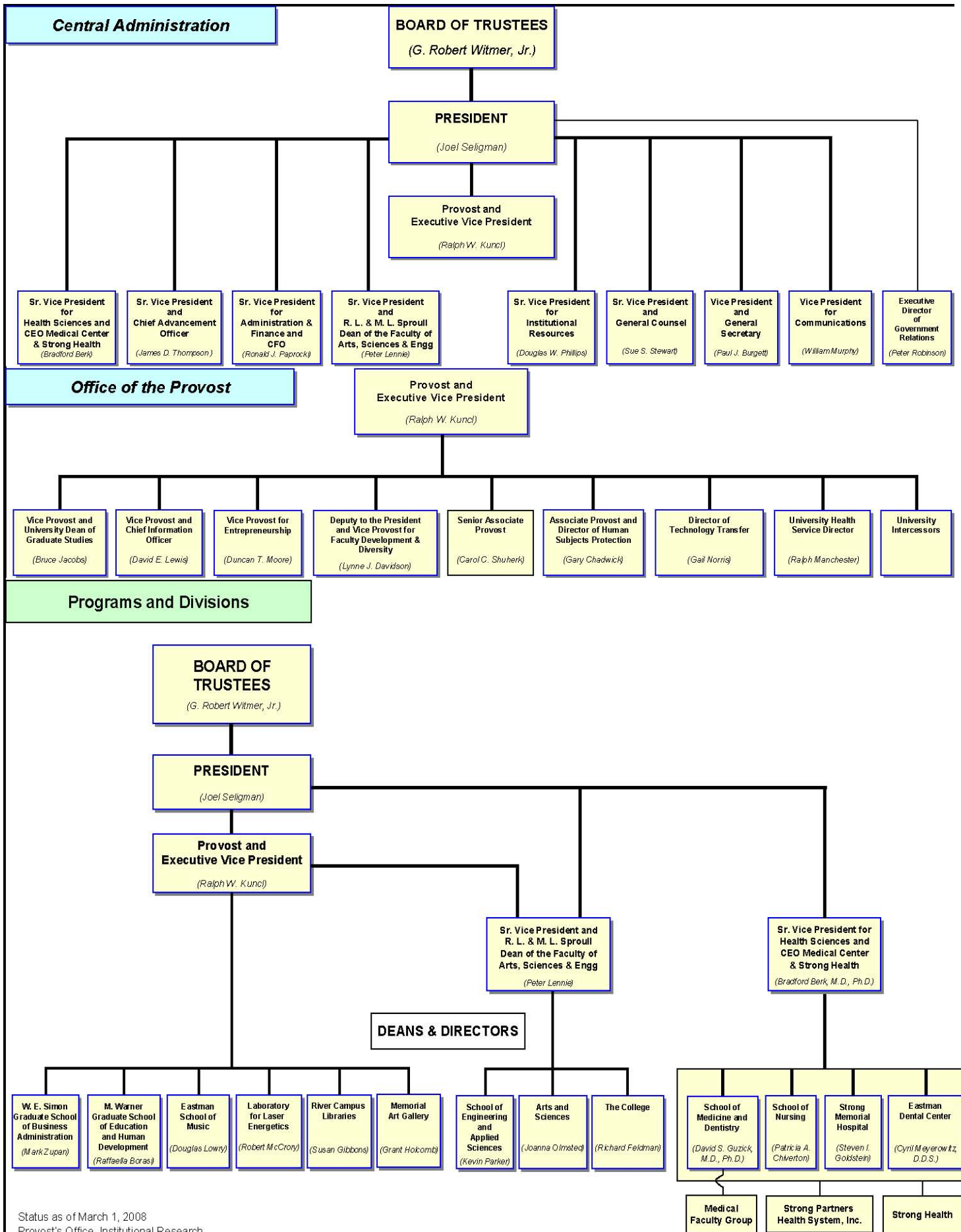
### Table of Contents

<b><u>Subject</u></b>	<b><u>Time Covered</u></b>	<b><u>Page</u></b>
Table of Contents	--	2
Accreditation	--	3
Organization	1 Year	4
Space	10 Years	5
Degrees Conferred	10 Years	6
Degrees by Major	3 Years	7
Certificates	3 Years	12
Admissions	10 Years	13
Enrollment by School	10 Years	14
Enrollment by School and Full-time/Part-time Status	3 Years	15
Enrollment, Gender and Ethnicity	1 Year	18
Enrollment, Geographic Origins	1 Year	19
Enrollment, Majors	3 Years	20
Courses, Credit Hours	3 Years	25
Courses, Section Size	1 Year	28
Faculty by School	10 Years	32
Faculty by Department	3 Years	33
Staff	1 Year	35

The University of Rochester is accredited by the **Middle States Commission on Higher Education**, <http://www.msche.org>, **New York State Board of Regents**, <http://www.regents.nysed.gov/>, and the **Association for the Accreditation of Human Research Protection Programs**.

Programs within the University's Schools are accredited by the following agencies:

- Accreditation Board of Engineering and Technology, Inc.
- Accreditation Council on Graduate Medical Education
- American Academy of Microbiology
- American Association for Marriage and Family Therapy
- American Dental Association
- American Psychological Association
- Association for Clinical and Pastoral Education
- Association to Advance Collegiate Schools of Business, International
- Council for Accreditation of Counseling and Related Educational Programs
- Council on Education for Public Health
- Liaison Committee on Medical Education
- National Association of Schools of Music
- National Council for Accreditation of Teacher Education
- National League for Nursing Accrediting Commission



Status as of March 1, 2008  
Provost's Office, Institutional Research

**UNIVERSITY OF ROCHESTER**  
**Size of Campus**

	1998-99	1999-2000	2000-01	2001-02	2002-03	2003-04	2004-05	2005-06	2006-07	2007-08
<b>Campus</b>	<b>Buildings</b>	<b>Buildings</b>	<b>Buildings</b>	<b>Buildings</b>	<b>Buildings</b>	<b>Buildings</b>	<b>Buildings</b>	<b>Buildings</b>	<b>Buildings</b>	<b>Buildings</b>
River Campus	54	54	55	55	55	55	55	53	54	54
Medical Center	12	15	15	18	18	18	18	18	18	18
South Campus	55	55	55	55	59	59	59	59	59	59
Eastman School	6	6	6	5	6	6	6	7	7	7
Memorial Art Gallery	2	2	2	4	4	4	4	4	4	4
Mt. Hope Campus	10	10	10	10	8	8	8	10	10	10
Off Campus	5	5	5	6	2	2	2	3	3	3
URMC Off Campus	-	-	-	-	-	-	-	1	1	4
<b>UNIVERSITY TOTAL</b>	<b>144</b>	<b>147</b>	<b>148</b>	<b>153</b>	<b>152</b>	<b>152</b>	<b>152</b>	<b>155</b>	<b>156</b>	<b>159</b>

	1998-99	1999-2000	2000-01	2001-02	2002-03	2003-04	2004-05	2005-06	2006-07	2007-08
<b>Campus</b>	<b>Gross Sq. Ft.</b>	<b>Gross Sq. Ft.</b>	<b>Gross Sq. Ft.</b>	<b>Gross Sq. Ft.</b>	<b>Gross Sq. Ft.</b>	<b>Gross Sq. Ft.</b>	<b>Gross Sq. Ft.</b>	<b>Gross Sq. Ft.</b>	<b>Gross Sq. Ft.</b>	<b>Gross Sq. Ft.</b>
River Campus	2,732,791	2,797,970	3,476,917	3,559,028	3,545,144	3,551,925	3,528,716	3,479,076	3,493,311	3,502,737
South Campus	919,177	913,289	1,067,530	1,094,888	1,111,007	1,110,593	1,110,593	1,188,895	1,195,279	1,195,382
Eastman School	347,784	347,784	416,646	407,283	534,494	536,064	563,138	537,734	631,384	670,574
Memorial Art Gallery	95,227	95,227	114,083	132,878	132,878	132,878	132,878	132,879	134,056	134,047
Mt. Hope Campus	189,910	170,124	194,971	202,918	198,379	198,363	198,363	218,964	218,962	222,255
Off Campus	20,907	20,754	22,279	25,623	4,087	4,087	4,087	14,242	14,242	14,242
Medical Center	3,671,545	3,927,449	4,713,086	4,976,951	4,838,345	4,852,337	4,855,381	4,913,292	5,078,968	5,108,266
URMC Off Campus	-	-	-	-	-	-	-	86,663	86,664	198,109
<b>UNIVERSITY TOTAL</b>	<b>7,977,341</b>	<b>8,272,597</b>	<b>10,005,512</b>	<b>10,399,569</b>	<b>10,364,334</b>	<b>10,386,247</b>	<b>10,393,156</b>	<b>10,571,745</b>	<b>10,852,866</b>	<b>11,045,612</b>

**Campus Inclusions (2007-08 definitions):**

**River Campus:** the primary campus for the College of Arts, Sciences & Engineering; the Simon Graduate School of Business; the Warner School of Education.

**Medical Center:** schools, research, & hospital buildings; Annex; Parking Garage; Goler House; Central Utilities; Eastman Dental Center, KinderCare Daycare.

**South Campus:** Nuclear Structure Research Laboratory; Laboratory for Laser Energetics; Center for Optoelectronics and Imaging; River Road buildings; Graduate Living Center; University Park; Whipple Park; Intercampus Drive buildings.

**Mt. Hope addresses:** 575, 590, 630, 668, 685, 692, 1351, 1510; Towne House East & West.

**Off Campus:** Mees Observatory, Gannett House, 110 Tobey Village; Cardiovascular Research Institute, Data Center, Psychiatry, 905 Culver Rd for URMC.

Source: Office of the University Architect, December 2007

# UNIVERSITY OF ROCHESTER

## Degrees Conferred

### Bachelors

	1997-98	1998-99	1999-00	2000-01	2001-02	2002-03	2003-04	2004-05	2005-06	2006-07
Arts & Sciences	903	852	842	750	778	893	838	845	814	831
Engineering & Applied Sciences	95	104	106	95	135	153	144	126	117	101
<b>The College Subtotal</b>	<b>998</b>	<b>956</b>	<b>948</b>	<b>845</b>	<b>913</b>	<b>1,046</b>	<b>982</b>	<b>971</b>	<b>931</b>	<b>932</b>
University College*	1	-	-	1	-	-	-	-	-	-
Eastman School of Music	99	119	101	90	121	118	108	87	129	99
School of Nursing	101	64	65	57	60	53	84	76	86	118
<b>University Total</b>	<b>1,199</b>	<b>1,139</b>	<b>1,114</b>	<b>993</b>	<b>1,094</b>	<b>1,217</b>	<b>1,174</b>	<b>1,134</b>	<b>1,146</b>	<b>1,149</b>

### Masters

	1997-98	1998-99	1999-00	2000-01	2001-02	2002-03	2003-04	2004-05	2005-06	2006-07
Arts & Sciences	155	128	147	126	99	103	125	134	117	125
Engineering & Applied Sciences	58	53	59	57	67	54	93	68	67	62
<b>The College Subtotal</b>	<b>213</b>	<b>181</b>	<b>206</b>	<b>183</b>	<b>166</b>	<b>157</b>	<b>218</b>	<b>202</b>	<b>184</b>	<b>187</b>
Simon Graduate School of Business	427	470	489	434	421	450	406	325	321	269
Warner Graduate School of Education & Human Development	96	63	55	53	61	71	64	97	86	85
Eastman School of Music	97	96	83	87	92	102	102	83	105	80
School of Medicine & Dentistry	82	79	74	84	61	97	92	108	124	122
School of Nursing	67	52	41	49	30	39	44	54	50	50
<b>University Total</b>	<b>982</b>	<b>941</b>	<b>948</b>	<b>890</b>	<b>831</b>	<b>916</b>	<b>926</b>	<b>869</b>	<b>870</b>	<b>793</b>

### Doctorates

	1997-98	1998-99	1999-00	2000-01	2001-02	2002-03	2003-04	2004-05	2005-06	2006-07
Arts & Sciences	105	79	95	76	67	71	79	84	78	76
Engineering & Applied Sciences	28	31	30	30	16	24	24	33	19	41
<b>The College Subtotal</b>	<b>133</b>	<b>110</b>	<b>125</b>	<b>106</b>	<b>83</b>	<b>95</b>	<b>103</b>	<b>117</b>	<b>97</b>	<b>117</b>
Simon Graduate School of Business	7	2	4	3	7	4	7	4	11	8
Warner Graduate School of Education & Human Development	12	4	7	14	9	5	6	13	14	30
Eastman School of Music	26	26	36	24	44	33	30	36	34	28
School of Medicine & Dentistry	143	138	136	130	147	129	159	148	142	135
<i>Subtotal Doctorates</i>	<i>39</i>	<i>39</i>	<i>34</i>	<i>45</i>	<i>38</i>	<i>49</i>	<i>56</i>	<i>47</i>	<i>43</i>	<i>52</i>
<i>Subtotal MD's</i>	<i>104</i>	<i>99</i>	<i>102</i>	<i>85</i>	<i>109</i>	<i>80</i>	<i>103</i>	<i>101</i>	<i>99</i>	<i>83</i>
School of Nursing	3	5	5	4	4	4	7	2	1	4
<b>University Total</b>	<b>324</b>	<b>285</b>	<b>313</b>	<b>281</b>	<b>294</b>	<b>270</b>	<b>312</b>	<b>320</b>	<b>299</b>	<b>322</b>

### All Degrees

	1997-98	1998-99	1999-00	2000-01	2001-02	2002-03	2003-04	2004-05	2005-06	2006-07
Arts & Sciences	1,163	1,059	1,084	952	944	1,067	1,042	1,063	1,009	1,032
Engineering & Applied Sciences	181	188	195	182	218	231	261	227	203	204
<b>The College Subtotal</b>	<b>1,344</b>	<b>1,247</b>	<b>1,279</b>	<b>1,134</b>	<b>1,162</b>	<b>1,298</b>	<b>1,303</b>	<b>1,290</b>	<b>1,212</b>	<b>1,236</b>
Simon Graduate School of Business	434	472	493	437	428	454	413	329	332	277
Warner Graduate School of Education & Human Development	108	67	62	67	70	76	70	110	100	115
University College	1	-	-	1	-	-	-	-	-	-
Eastman School of Music	222	241	220	201	257	253	240	206	268	207
School of Medicine & Dentistry	225	217	210	214	208	226	251	256	266	257
School of Nursing	171	121	111	110	94	96	135	132	137	172
<b>University Total</b>	<b>2,505</b>	<b>2,365</b>	<b>2,375</b>	<b>2,164</b>	<b>2,219</b>	<b>2,403</b>	<b>2,412</b>	<b>2,323</b>	<b>2,315</b>	<b>2,264</b>

\*University College no longer exists. The degrees granted represent the final program completers.

Source: Student Information System

**UNIVERSITY OF ROCHESTER**

**Degrees Conferred - Undergraduate Majors Completed**

By School, Double Majors Counted Twice\*

2004-05 2005-06 2006-07

**THE COLLEGE**

**Arts & Sciences**

African & African-American Studies	2	3	6
American Sign Language	10	9	5
Anthropology	11	10	12
<b>Art &amp; Art History</b>	<b>11</b>	<b>6</b>	<b>14</b>
Art History	5	2	6
Studio Arts	6	4	8
<b>Biological Sciences</b>	<b>81</b>	<b>91</b>	<b>124</b>
Biochemistry	13	22	28
Cell & Development	11	13	24
Ecology & Evol Biol	12	13	12
Microbiology	5	6	7
Molecular Genetics	15	19	18
Neuroscience	25	18	35
Biology	45	53	51
Brain & Cognitive Science	28	35	34
Chemistry	22	23	18
Computer Science	37	28	25
<b>Earth &amp; Environmental Sciences</b>	<b>8</b>	<b>9</b>	<b>11</b>
Biology-Geology	-	1	1
Environmental Sciences	-	2	2
Environmental Studies	5	-	3
Geological Sciences	3	6	5
Economics	146	131	112
English	80	66	64
Film and Media Studies	16	14	10
Health & Society	30	23	27
History	60	53	48
Interdepartmental	11	15	15
Linguistics	10	4	9
<b>Mathematics</b>	<b>48</b>	<b>62</b>	<b>65</b>
Applied Mathematics	6	10	11
Mathematics	41	52	51
Mathematics-Statistics	1	-	3
<b>Modern Languages &amp; Cultures</b>	<b>48</b>	<b>48</b>	<b>35</b>
Comparative Literature	4	3	2
French	2	5	9
German	6	8	3
Japanese	10	10	8
Russian	4	7	1
Spanish	22	15	12
Music	6	11	14
Philosophy	20	18	11
<b>Physics and Astronomy</b>	<b>19</b>	<b>27</b>	<b>27</b>
Physics	16	19	26
Physics and Astronomy	3	8	1
Political Science	105	95	96
Psychology	136	102	120
<b>Religion &amp; Classics</b>	<b>23</b>	<b>28</b>	<b>28</b>
Classics	1	2	5
Religion	22	26	23
Russian Studies	3	-	-
Statistics	15	10	10
Women's Studies	3	2	3
<b>SUBTOTAL</b>	<b>1,034</b>	<b>976</b>	<b>994</b>

**UNIVERSITY OF ROCHESTER****Degrees Conferred - Undergraduate Majors Completed**

By School, Double Majors Counted Twice\*

2004-05    2005-06    2006-07

**THE COLLEGE****School of Engineering and Applied Sciences**

Biomedical Engineering	31	33	35
Chemical Engineering	13	14	11
Electrical and Computer Engineering	29	19	14
Engineering Science	4	3	-
Geomechanics	2	2	-
Interdepartmental Engineering	-	-	-
Mechanical Engineering	25	30	25
Optics	22	16	16
<b>SUBTOTAL</b>	126	117	101

**THE COLLEGE SUBTOTAL**

1,160	1,093	1,095
-------	-------	-------

**Eastman School of Music**

Applied Music	76	113	82
Composition	2	2	3
Jazz Studies & Contemporary Media	9	5	8
Jazz & Contemporary Media Writing	-	-	1
Music Education - General	2	4	2
Music Education - Instrumental	7	15	5
Music Education - Vocal	-	3	4
Music Theory	-	2	5
Musical Arts	1	1	-
<b>SUBTOTAL</b>	97	145	110

**School of Nursing**

76	86	118
----	----	-----

**TOTAL UNIVERSITY**

1,356	1,333	1,323
-------	-------	-------

\*Totals on this table are greater than the total number of degrees conferred because double majors are reported here.

The University awards the following Bachelor's Degrees: BA, BS, BM

Source: IR Office Report from Student Information System



**University of Rochester**  
**Degrees Conferred - Graduate Majors Completed**  
**By School, Double Majors Counted Twice\***

	2004-05		2005-06		2006-07	
	Mast.	Doc.	Mast.	Doc.	Mast.	Doc.

**THE COLLEGE - Arts and Sciences**

Biology	10	5	4	3	5	5
Brain & Cognitive Sciences	3	1	8	3	3	6
Chemistry	20	4	18	7	14	15
Computer Science	13	9	10	8	9	6
Earth & Environ Sciences (Geological)	-	1	6	1	3	1
Economics	8	16	18	9	12	8
English	22	3	14	7	18	4
History	1	6	3	5	4	3
Interdepartmental Studies	-	-	-	-	-	-
Linguistics	-	-	1	-	2	1
Mathematics	8	2	5	2	2	4
Modern Languages & Cultures	2	-	1	-	2	-
Comparative Literature	2	-	1	-	2	-
Philosophy	2	3	4	1	8	2
Physics & Astronomy	25	22	10	14	17	10
Physics	25	21	10	13	17	10
Physics & Astronomy	-	1	-	1	-	-
Political Science	7	5	5	8	6	3
Psychology	8	4	7	4	12	6
Psychology	8	-	7	-	12	-
Clinical	-	3	-	3	-	3
Developmental	-	1	-	1	-	1
Social-Personality	-	-	-	-	-	2
Visual and Cultural Studies	5	3	3	6	8	4
<b>SUBTOTAL</b>	<b>134</b>	<b>84</b>	<b>117</b>	<b>78</b>	<b>125</b>	<b>78</b>

**THE COLLEGE - School of Engineering and Applied Sciences**

Biomedical Engineering	7	2	8	2	8	-
Chemical Engineering	14	1	12	3	8	12
Electrical & Computer Engineering	5	-	3	-	5	-
Electrical Engineering	24	11	18	6	18	14
Materials Science	1	4	5	-	9	2
Mechanical Engineering	6	4	6	2	6	2
Optics	11	11	15	6	8	10
<b>SUBTOTAL</b>	<b>68</b>	<b>33</b>	<b>67</b>	<b>19</b>	<b>62</b>	<b>40</b>

**THE COLLEGE TOTAL**

<b>202</b>	<b>117</b>	<b>184</b>	<b>97</b>	<b>187</b>	<b>118</b>
------------	------------	------------	-----------	------------	------------

**Simon Graduate School of Business Administration**

Master of Science	20	-	31	-	65	-
Business Administration	252	4	216	11	168	8
Business Admin. - Executive Development	19	-	39	-	36	-
Business Admin. - Bern, Switzerland	34	-	35	-	27	-
<b>SUBTOTAL</b>	<b>325</b>	<b>4</b>	<b>321</b>	<b>11</b>	<b>296</b>	<b>8</b>

**University of Rochester**  
**Degrees Conferred - Graduate Majors Completed**  
**By School, Double Majors Counted Twice\***

	2004-05		2005-06		2006-07	
	Mast.	Doc.	Mast.	Doc.	Mast.	Doc.
<b>Warner Graduate School of Education and Human Development</b>						
Curriculum Secondary Soc Studies	-	-	1	-	-	-
EDD - Administration (GEN)	-	4	-	3	-	6
EDD - Administration (SAS)	-	1	-	-	-	1
EDD - Counseling	-	-	-	1	-	-
EDD - ED Administration (K-12) Accel	-	-	-	-	-	13
EDD - ED Administration w/Higher Ed Accel	-	-	-	-	-	1
EDD - Higher Ed	-	2	-	1	-	1
EDD - Teaching & Curriculum	-	-	-	3	-	1
MAT - English (7-12)	-	-	1	-	-	-
MAT - German (7-12)	-	-	1	-	-	-
MAT - Math (7-12)	-	-	-	-	1	-
MAT - Math Prof.	-	-	-	-	1	-
MAT - Social St (7-12)	2	-	1	-	4	-
MS - Administration (CATH)	2	-	3	-	-	-
MS - Administration (GEN)	-	-	1	-	1	-
MS - Administration (SAS)	4	-	4	-	1	-
MS - Biology (5-12)	2	-	-	-	-	-
MS - Biology (7-12)	2	-	5	-	2	-
MS - Community Counseling	6	-	7	-	3	-
MS - Earth Sc (7-12)	1	-	-	-	1	-
MS - Elementary (1-6)	2	-	8	-	2	-
MS - English (5-12)	-	-	-	-	1	-
MS - English (7-12)	1	-	-	-	6	-
MS - Higher Ed	8	-	11	-	4	-
MS - Human Dev	5	-	4	-	7	-
MS - Human Dev - Early Childhood	-	-	-	-	2	-
MS - Math (7-12)	2	-	-	-	2	-
MS - Math/Inclusion (5-12)	1	-	-	-	-	-
MS - Physics (7-12)	1	-	-	-	1	-
MS - School Counseling	21	-	12	-	12	-
MS - School Counseling (3+2)	1	-	-	-	-	-
MS - School Counseling (COMM)	7	-	4	-	4	-
MS - Social St (5-12)	1	-	-	-	1	-
MS - Social Studies (7-12)	2	-	2	-	4	-
MS - Spanish (5-9)	-	-	-	-	1	-
MS - Spanish (5-12)	1	-	-	-	-	-
MS - Spanish (7-12)	1	-	3	-	1	-
MS - Teaching & Curriculum	6	-	4	-	7	-
MS - TESOL	2	-	2	-	4	-
MS in Adol Ed: Chemistry	1	-	1	-	1	-
MS in Adol Ed: Spanish	1	-	-	-	-	-
MS in Ed Admin/HED/Stu Affairs	-	-	1	-	1	-
MS in Spanish 7-12	1	-	-	-	-	-
MS -Social St/Inclusion (5-12)	1	-	-	-	-	-
MS Tchng & Curr/Spec TESOL	1	-	-	-	-	-
MS-D/Elementary 1-6T	-	-	-	-	1	-
MS-D/Social St 7-12T	1	-	-	-	-	-
MS-Early Childhood (B-2)	1	-	1	-	1	-
MS-Early Childhood/I B-2	-	-	-	-	-	-
MS-Earth Sc/Inclusion (7-12)	-	-	1	-	-	-
MS-Elementary Inclusion Prof.	1	-	-	-	-	-
MS-Elementary Prof.	1	-	1	-	1	-
MS-Elementary/Inclusion (1-6)	1	-	-	-	1	-
MS-English Prof.	-	-	1	-	-	-
MS-Literacy B-6	1	-	1	-	3	-
MS - Literacy 5 - 12	-	-	-	-	1	-
MS-Math Prof.	1	-	1	-	1	-
MS-Math/Inclusion (7-12)	-	-	1	-	-	-
MS-Physics Prof.	-	-	1	-	-	-
MS - School Bldg Leadership	-	-	-	-	1	-
MS-Social St. Prof.	2	-	1	-	-	-
MS-Spanish Prof.	2	-	1	-	-	-
PHD - Counseling	-	-	-	-	-	4
PHD - Higher Education	-	-	-	1	-	-
PHD in Ed-W/Conc in Hum Dev	-	3	-	1	-	-
PHD - Teaching, Curriculum & Change	-	-	-	-	-	1
PHD -Teaching & Curriculum	-	3	-	4	-	1
PHD - Thought & Policy	-	-	-	-	-	1
<b>SUBTOTAL</b>	<b>97</b>	<b>13</b>	<b>86</b>	<b>14</b>	<b>85</b>	<b>30</b>

**University of Rochester**  
**Degrees Conferred - Graduate Majors Completed**  
**By School, Double Majors Counted Twice\***

	2004-05		2005-06		2006-07	
	Mast.	Doc.	Mast.	Doc.	Mast.	Doc.
<b>Eastman School of Music</b>						
Composition	2	4	3	2	1	1
Conducting	-	1	2	1	4	1
Early Music History	-	-	2	-	-	-
Jazz Studies & Contemp Media	4	-	5	1	1	1
Jazz Studies & Contemp Media-Writing	-	-	-	-	-	-
Music Education	6	1	7	1	17	2
Music Theory	2	4	5	3	1	3
Musicology	2	1	4	3	2	2
Opera	1	-	1	-	1	-
Performance & Literature	63	23	73	19	50	17
Piano Accompanying & Chamber Music	2	2	1	4	2	2
Theory Pedagogy	1	-	4	-	2	-
<b>SUBTOTAL</b>	<b>83</b>	<b>36</b>	<b>107</b>	<b>34</b>	<b>81</b>	<b>29</b>

**School of Medicine and Dentistry**

Anatomy	1	-	3	-	1	2
Biochemistry	10	6	12	8	13	7
Biophysics	5	3	4	5	4	5
Dental Science	-	-	1	-	-	-
Epidemiology	-	-	-	-	-	1
Genetics	5	1	6	2	10	4
Health Services Research	-	4	-	1	-	2
Marriage & Family Therapy	14	-	8	-	10	-
Medical Statistics	-	-	1	-	2	-
Microbiology & Immunology	13	9	22	13	19	8
Neurobiology and Anatomy	-	-	-	-	2	-
Neuroscience	7	5	12	4	11	5
Pathology	7	5	8	2	11	6
Pharmacology	9	5	8	2	3	4
Physiology	-	-	-	-	-	1
Public Health	10	-	9	-	10	-
Public Health - Clinical Investigation	17	-	19	-	19	-
Statistics	2	-	3	2	3	2
Toxicology	8	9	8	4	4	5
<b>SUBTOTAL without MDs</b>	<b>108</b>	<b>47</b>	<b>124</b>	<b>43</b>	<b>122</b>	<b>52</b>
MD's (First Professional)	-	101	-	99	-	83
<b>SUBTOTAL with MDs</b>	<b>108</b>	<b>148</b>	<b>124</b>	<b>142</b>	<b>122</b>	<b>135</b>

**School of Nursing**

Acute Care Cardiovascular	-	-	1	-	1	-
Acute Critical Care Nurse Practitioner	11	-	3	-	-	-
Adult Nurse Practitioner	-	-	9	-	10	-
Care of Children & Families	8	-	5	-	7	-
Family Nurse Practitioner	11	-	14	-	9	-
Gerontological Nurse Practitioner	1	-	-	-	1	-
Health Practice Research	-	-	-	-	-	4
Leadership in Health Care Sys	21	-	16	-	18	-
Disaster Response & Emer Prepar	7	-	6	-	6	-
Health Promo, Edu & Tech	14	-	10	-	12	-
Neonatal Nurse Practitioner	-	-	-	-	-	-
Nursing	-	2	-	1	-	-
Ped Nur Prac/Psych Mental Health	-	-	1	-	-	-
Psych Mental Health	2	-	1	-	4	-
<b>SUBTOTAL</b>	<b>75</b>	<b>2</b>	<b>66</b>	<b>1</b>	<b>50</b>	<b>4</b>

	2004-05		2004-05		2005-06	
	Mast.	Doc.	Mast.	Doc.	Mast.	Doc.
<b>TOTAL UNIVERSITY</b>	<b>890</b>	<b>320</b>	<b>888</b>	<b>299</b>	<b>821</b>	<b>324</b>

\*Totals on this table are greater than the total number of degrees conferred because double majors are reported here.  
The University awards the following Master's and Doctorate degrees:

MA, MS, MM, MPH, MBA, MAT, PhD, EdD, DMA

Source: IR Office Report from Student Information System

**UNIVERSITY OF ROCHESTER**  
**Certificates Conferred**

**2004-05      2005-06      2006-07**

**With Bachelor's Degrees**

Actuarial Studies	9	9	9
Asian Studies	-	1	-
Biotechnology	-	1	1
International Relations	16	10	8
Management Studies	133	110	120
Mathematical Modeling in Political Science & Economics	4	8	6
Polish & Central European Studies	1	-	2
Citation for Achievement in College Leadership	5	4	7

**Postbaccalaureate**

Music	11	12	9
-------	----	----	---

**Post Master's**

Nursing	2	12	6
---------	---	----	---

**First-professional**

Dentistry	50	40	54
-----------	----	----	----

---

Sources: College Center for Academic Support; School of Nursing, Eastman Dental Center; Institutional Research

**UNIVERSITY OF ROCHESTER**  
**Admissions Activity**

**Fall**                      **1998**      **1999**      **2000**      **2001**      **2002**      **2003**      **2004**      **2005**      **2006**      **2007**

**College: First Time Full-time Freshmen (Arts & Sciences, Engineering & Applied Sciences)**

Number of Applicants	8,782	8,656	10,082	9,579	8,682	10,486	11,099	11,293	11,316	11,676
Number Offered	5,189	5,714	5,086	5,041	4,846	5,096	5,292	5,380	5,139	4,804
Entered	968	1,087	930	1,008	934	976	971	997	1,112	1,051

**University: First Time Full-time Freshmen (College and Eastman School of Music)**

Number of Applicants	9,760	9,623	11,133	10,602	9,606	11,381	12,023	12,262	12,245	12,768
Number Offered	5,771	5,975	5,335	5,294	5,091	5,385	5,541	5,607	5,373	5,086
Entered	1,077	1,221	1,051	1,117	1,063	1,124	1,091	1,114	1,233	1,188

**University: Graduate Students**

Number of Applicants	7,103	6,785	7,798	7,704	9,229	10,020	6,829	6,606	7,414	8,066
Number Offered	1,902	1,723	1,855	1,945	1,804	1,981	1,785	1,769	1,930	2,127
Entered	947	971	860	1,007	911	997	952	947	1,111	1,157

**First Professional Students (M.D. Degree)**

Number of Applicants	7,018	5,865	5,111	4,305	3,845	3,969	3,975	4,243	4,233	3,701
Number Offered	248	288	252	280	281	275	272	260	281	282
Entered	100	100	98	100	100	100	100	100	101	101

Source: Admissions Offices; Graduate Dean

**UNIVERSITY OF ROCHESTER**  
**Enrollment - Total (Full-time and Part-time Students) Fall Semester**

**Undergraduate**

	1998-99	1999-00	2000-01	2001-02	2002-03	2003-04	2004-05	2005-06	2006-07	2007-08
Arts & Sciences*	3,532	3,527	3,540	3,690	3,702	3,625	3,629	3,699	3,843	4,022
Engineering & Applied Sciences**	218	208	222	280	269	237	217	195	214	252
<b>The College Subtotal</b>	<b>3,750</b>	<b>3,735</b>	<b>3,762</b>	<b>3,970</b>	<b>3,971</b>	<b>3,862</b>	<b>3,846</b>	<b>3,894</b>	<b>4,057</b>	<b>4,274</b>
Eastman School of Music	468	485	481	475	482	480	480	501	482	504
School of Nursing	159	145	143	122	104	119	122	137	193	183
<b>Subtotal</b>	<b>4,377</b>	<b>4,365</b>	<b>4,386</b>	<b>4,567</b>	<b>4,557</b>	<b>4,461</b>	<b>4,448</b>	<b>4,532</b>	<b>4,732</b>	<b>4,961</b>
Non-matriculated	126	135	138	149	173	149	113	194	205	215
<b>Total</b>	<b>4,503</b>	<b>4,500</b>	<b>4,524</b>	<b>4,716</b>	<b>4,730</b>	<b>4,610</b>	<b>4,561</b>	<b>4,726</b>	<b>4,937</b>	<b>5,176</b>

**Graduate and Professional Students**

	1998-99	1999-00	2000-01	2001-02	2002-03	2003-04	2004-05	2005-06	2006-07	2007-08
Arts & Sciences	660	632	600	638	627	671	650	663	656	667
Engineering & Applied Sciences	248	238	225	220	271	308	298	322	374	392
<b>The College Subtotal</b>	<b>908</b>	<b>870</b>	<b>825</b>	<b>858</b>	<b>898</b>	<b>979</b>	<b>948</b>	<b>985</b>	<b>1,030</b>	<b>1,059</b>
Simon Graduate School of Business	764	780	727	744	804	732	572	513	577	685
Warner Graduate School of Education & Human Development	204	226	259	274	293	310	333	411	437	499
Eastman School of Music	329	315	331	334	359	392	387	407	398	423
School of Medicine & Dentistry, M.D.	419	412	412	418	417	439	424	414	410	414
School of Medicine & Dentistry, M.S. & Ph.D.	342	371	380	433	451	484	517	554	573	571
School of Nursing	171	158	157	140	149	129	156	164	170	180
<b>Subtotal</b>	<b>3,137</b>	<b>3,132</b>	<b>3,091</b>	<b>3,201</b>	<b>3,371</b>	<b>3,465</b>	<b>3,337</b>	<b>3,448</b>	<b>3,595</b>	<b>3,831</b>
Non-matriculated	605	515	582	573	524	534	555	556	495	502
<b>Total</b>	<b>3,742</b>	<b>3,647</b>	<b>3,673</b>	<b>3,774</b>	<b>3,895</b>	<b>3,999</b>	<b>3,892</b>	<b>4,004</b>	<b>4,090</b>	<b>4,333</b>

**All**

	1998-99	1999-00	2000-01	2001-02	2002-03	2003-04	2004-05	2005-06	2006-07	2007-08
Arts & Sciences	4,192	4,159	4,140	4,328	4,329	4,296	4,279	4,362	4,499	4,689
Engineering & Applied Sciences	466	446	447	500	540	545	515	517	588	644
<b>The College Subtotal</b>	<b>4,658</b>	<b>4,605</b>	<b>4,587</b>	<b>4,828</b>	<b>4,869</b>	<b>4,841</b>	<b>4,794</b>	<b>4,879</b>	<b>5,087</b>	<b>5,333</b>
Simon Graduate School of Business	764	780	727	744	804	732	572	513	577	685
Warner Graduate School of Education & Human Development	204	226	259	274	293	310	333	411	437	499
Eastman School of Music	797	800	812	809	841	872	867	908	880	927
School of Medicine & Dentistry, M.D.	419	412	412	418	417	439	424	414	410	414
School of Medicine & Dentistry, M.S. & Ph.D.	342	371	380	433	451	484	517	554	573	571
School of Nursing	330	303	300	262	253	248	278	301	363	363
<b>University, Subtotal</b>	<b>7,514</b>	<b>7,497</b>	<b>7,477</b>	<b>7,768</b>	<b>7,928</b>	<b>7,926</b>	<b>7,785</b>	<b>7,980</b>	<b>8,327</b>	<b>8,792</b>
Non-matriculated	731	650	720	722	697	683	668	750	700	717
<b>University Total</b>	<b>8,245</b>	<b>8,147</b>	<b>8,197</b>	<b>8,490</b>	<b>8,625</b>	<b>8,609</b>	<b>8,453</b>	<b>8,730</b>	<b>9,027</b>	<b>9,509</b>

\*Older dates may include a small number of students enrolled in University College (a unit which has been phased out).

\*\*This table shows only Junior and Senior Engineering majors in Engineering & Applied Sciences.

Reporting in some past years also included Freshman and Sophomore intended Engineering majors.

Source: UR-10 Reports

**UNIVERSITY OF ROCHESTER**  
**Enrollment - By School, Showing Full-time, Part-time Status**

<b>UNDERGRADUATES</b>	<b>Fall 2005</b>			<b>Fall 2006</b>			<b>Fall 2007</b>		
	<b>FT</b>	<b>PT</b>	<b>Total</b>	<b>FT</b>	<b>PT</b>	<b>Total</b>	<b>FT</b>	<b>PT</b>	<b>Total</b>
Arts & Sciences	3,663	36	3,699	3,814	29	3,843	3,995	35	4,030
Engineering & Applied Sciences	195	-	195	213	1	214	241	6	247
<b>SUBTOTAL COLLEGE</b>	3,858	36	3,894	4,027	30	4,057	4,236	41	4,277
Eastman School of Music	498	3	501	479	3	482	497	7	504
Nursing	64	73	137	93	100	193	102	81	183
<b>SUBTOTAL</b>	4,420	112	4,532	4,599	133	4,732	4,835	129	4,964
Non-matriculated	15	179	194	9	196	205	4	174	178
<b>TOTAL UNIVERSITY</b>	4,435	291	4,726	4,608	329	4,937	4,839	303	5,142

<b>UNDERGRADUATES</b>	<b>Spring 2006</b>			<b>Spring 2007</b>			<b>Spring 2008</b>		
	<b>FT</b>	<b>PT</b>	<b>Total</b>	<b>FT</b>	<b>PT</b>	<b>Total</b>	<b>FT</b>	<b>PT</b>	<b>Total</b>
Arts & Sciences	3,570	39	3,609	3,756	30	3,786	3,906	33	3,939
Engineering & Applied Sciences	201	4	205	222	4	226	247	7	254
<b>SUBTOTAL COLLEGE</b>	3,771	43	3,814	3,978	34	4,012	4,153	40	4,193
Eastman School of Music	465	5	470	466	2	468	472	3	475
Nursing	60	83	143	92	98	190	91	85	176
<b>SUBTOTAL</b>	4,296	131	4,427	4,536	134	4,670	4,716	128	4,844
Non-matriculated	1	176	177	3	204	207	-	170	170
<b>TOTAL UNIVERSITY</b>	4,297	307	4,604	4,539	338	4,877	4,716	298	5,014

# UNIVERSITY OF ROCHESTER

## Enrollment - By School, Showing Full-time, Part-time Status

GRADUATE STUDENTS	Fall 2005			Fall 2006			Fall 2007		
	FT	PT	Total	FT	PT	Total	FT	PT	Total
Arts & Sciences	656	7	663	651	5	656	662	8	670
Engineering & Applied Sciences	295	27	322	350	24	374	360	28	388
<b>SUBTOTAL COLLEGE</b>	951	34	985	1,001	29	1,030	1,022	36	1,058
Simon School	367	146	513	391	186	577	452	226	678
Warner School	129	282	411	123	314	437	137	358	495
Eastman School of Music	354	53	407	350	48	398	363	60	423
Medicine & Dentistry (MD)	414	-	414	410	-	410	415	-	415
Medicine & Dentistry (Other)	473	81	554	490	83	573	484	84	568
Nursing	37	127	164	42	128	170	45	134	179
<b>SUBTOTAL</b>	2,725	723	3,448	2,807	788	3,595	2,918	898	3,816
Non-matriculated (includes Eastman Dental Center)	94	462	556	93	402	495	72	390	462
<b>TOTAL UNIVERSITY</b>	2,819	1,185	4,004	2,900	1,190	4,090	2,990	1,288	4,278

GRADUATE STUDENTS	Spring 2006			Spring 2007			Spring 2008		
	FT	PT	Total	FT	PT	Total	FT	PT	Total
Arts & Sciences	614	4	618	633	8	641	631	9	640
Engineering & Applied Sciences	286	23	309	325	25	350	323	22	345
<b>SUBTOTAL COLLEGE</b>	900	27	927	958	33	991	954	31	985
Simon School - Winter Quarter	460	158	618	433	184	617	536	207	743
Warner School	130	293	423	127	312	439	150	350	500
Eastman School of Music	332	56	388	335	52	387	350	53	403
Medicine & Dentistry (MD)	414	-	414	407	-	407	408	-	408
Medicine & Dentistry (Other)	457	75	532	452	77	529	462	76	538
Nursing	45	150	195	46	166	212	55	142	197
<b>SUBTOTAL</b>	2,738	759	3,497	2,758	824	3,582	2,915	859	3,774
Non-matriculated (includes Eastman Dental Center)	92	365	457	99	351	450	27	386	413
<b>TOTAL UNIVERSITY</b>	2,830	1,124	3,954	2,857	1,175	4,032	2,942	1,245	4,187

GRADUATE STUDENTS	Simon Spring Qtr 2006			Simon Spring Qtr 2007			Simon Spring Qtr 2008		
	FT	PT	Total	FT	PT	Total	FT	PT	Total
Simon School - Spring Quarter	462	160	622	446	180	626	509	211	720
Non-matriculated - Simon Spring Quarter	-	91	91	-	97	97	-	103	103
<b>TOTAL UNIVERSITY</b>	462	251	713	446	277	723	509	314	823



**UNIVERSITY OF ROCHESTER**  
**Enrollment - By School, Showing Full-time, Part-time Status**

ALL STUDENTS	Fall 2005			Fall 2006			Fall 2007		
	FT	PT	Total	FT	PT	Total	FT	PT	Total
Arts & Sciences	4,319	43	4,362	4,465	34	4,499	4,657	43	4,700
Engineering & Applied Sciences	490	27	517	563	25	588	601	34	635
<b>SUBTOTAL COLLEGE</b>	4,809	70	4,879	5,028	59	5,087	5,258	77	5,335
Simon School	367	146	513	391	186	577	452	226	678
Warner School	129	282	411	123	314	437	137	358	495
Eastman School of Music	852	56	908	829	51	880	860	67	927
Medicine & Dentistry (MD)	414	-	414	410	-	410	415	-	415
Medicine & Dentistry (Other)	473	81	554	490	83	573	484	84	568
Nursing	101	200	301	135	228	363	147	215	362
<b>SUBTOTAL</b>	7,145	835	7,980	7,406	921	8,327	7,753	1,027	8,780
Non-matriculated	109	641	750	102	598	700	76	564	640
<b>TOTAL UNIVERSITY</b>	7,254	1,476	8,730	7,508	1,519	9,027	7,829	1,591	9,420

ALL STUDENTS	Spring 2006			Spring 2007			Spring 2008		
	FT	PT	Total	FT	PT	Total	FT	PT	Total
Arts & Sciences	4,184	43	4,227	4,389	38	4,427	4,537	42	4,579
Engineering & Applied Sciences	487	27	514	547	29	576	570	29	599
<b>SUBTOTAL COLLEGE</b>	4,671	70	4,741	4,936	67	5,003	5,107	71	5,178
Simon School	460	158	618	433	184	617	536	207	743
Warner School	130	293	423	127	312	439	150	350	500
Eastman School of Music	797	61	858	801	54	855	822	56	878
Medicine & Dentistry (MD)	414	-	414	407	-	407	408	-	408
Medicine & Dentistry (Other)	457	75	532	452	77	529	462	76	538
Nursing	105	233	338	138	264	402	146	227	373
<b>SUBTOTAL</b>	7,034	890	7,924	7,294	958	8,252	7,631	987	8,618
Non-matriculated	93	541	634	102	555	657	27	556	583
<b>TOTAL UNIVERSITY</b>	7,127	1,431	8,558	7,396	1,513	8,909	7,658	1,543	9,201

ALL SIMON SPRING	Simon Spring Qtr 2006			Simon Spring Qtr 2007			Simon Spring Qtr 2008		
	FT	PT	Total	FT	PT	Total	FT	PT	Total
Simon School - Spring Quarter	462	160	622	446	180	626	509	211	720
Non-matriculated - Simon Spring Quarter	-	91	91	-	97	97	-	103	103
<b>TOTAL UNIVERSITY</b>	462	251	713	446	277	723	509	314	823

Sources:

UR-10 Parts IA and IIA: 10/14/05, 10/13/06, and 10/12/07 for Fall;  
 UR-20 Parts IA and IIA: 2/18/05, 2/24/06 and 2/23/07 for Spring;  
 UR-20 for MD's;  
 UR-23B Parts IV and V: 10/24/06, 5/1/08, and 6/11/08 for Simon Spring Quarters.

Notes:

Simon School Fall Quarter is not as far into its quarter session as other schools are into the semester calendar. Therefore, numbers are not necessarily representative of the outcome of Simon Fall quarterly activity.

Totals include students in Take 5 Program.

**UNIVERSITY OF ROCHESTER**  
**Enrolled Students: Declared Ethnic Origin\***

FALL 2007	TOTAL		Non-resident alien		Black, non-Hispanic		American Indian/Alaska Native		Asian/Pacific Islander		Hispanic		White, non-Hispanic		Unknown	
	M	W	M	W	M	W	M	W	M	W	M	W	M	W	M	W
	<b>Undergraduates-Full Time</b>															
First-time Freshmen - College	519	532	34	35	22	26	1	1	49	66	20	23	276	273	117	108
First-time Freshmen - Eastman	60	71	11	12	-	1	-	-	2	10	2	1	39	43	6	4
All other Freshmen	18	21	1	5	3	3	-	-	3	-	1	1	4	7	6	5
Sophomores	694	601	35	36	20	30	1	2	77	59	20	32	390	322	151	120
Juniors	569	568	39	32	22	26	2	1	49	63	19	29	368	349	70	68
Seniors	588	587	23	15	21	32	-	3	48	56	22	24	399	383	75	74
Kauffman Students	6	1	1	-	-	-	-	-	1	-	-	-	4	-	-	1
Unclassified	2	2	2	2	-	-	-	-	-	-	-	-	-	-	-	-
<b>SUBTOTAL</b>	<b>2,456</b>	<b>2,383</b>	<b>146</b>	<b>137</b>	<b>88</b>	<b>118</b>	<b>4</b>	<b>7</b>	<b>229</b>	<b>254</b>	<b>84</b>	<b>110</b>	<b>1,480</b>	<b>1,377</b>	<b>425</b>	<b>380</b>
<b>Undergraduates-Part Time</b>																
Juniors	17	78	1	-	-	8	-	1	-	2	-	-	14	59	2	8
Seniors	16	17	-	-	2	-	-	-	4	4	1	-	8	11	1	2
Unclassified	31	132	2	1	5	6	-	-	1	5	3	3	12	85	8	32
Kauffman Students	1	-	-	-	-	-	-	-	-	-	-	-	1	-	-	-
<b>SUBTOTAL</b>	<b>65</b>	<b>227</b>	<b>3</b>	<b>1</b>	<b>7</b>	<b>14</b>	<b>-</b>	<b>1</b>	<b>5</b>	<b>11</b>	<b>4</b>	<b>3</b>	<b>35</b>	<b>155</b>	<b>11</b>	<b>42</b>
<b>TOTAL Undergraduates</b>	<b>2,521</b>	<b>2,610</b>	<b>149</b>	<b>138</b>	<b>95</b>	<b>132</b>	<b>4</b>	<b>8</b>	<b>234</b>	<b>265</b>	<b>88</b>	<b>113</b>	<b>1,515</b>	<b>1,532</b>	<b>436</b>	<b>422</b>
<b>First Professional</b>																
First-time	198	217	-	-	10	22	-	2	38	54	4	2	134	119	12	18
All others	-	-	-	-	-	-	-	-	-	-	-	-	-	-	-	-
<b>TOTAL First Professional</b>	<b>198</b>	<b>217</b>	<b>-</b>	<b>-</b>	<b>10</b>	<b>22</b>	<b>-</b>	<b>2</b>	<b>38</b>	<b>54</b>	<b>4</b>	<b>2</b>	<b>134</b>	<b>119</b>	<b>12</b>	<b>18</b>
<b>Graduate Students-Full Time</b>																
First-time Ph.D.	170	121	71	41	2	2	-	-	6	4	6	8	76	59	9	7
All others Masters/Doctoral	1,224	961	520	375	29	28	1	3	41	68	15	31	526	399	92	57
Unclassified	7	7	4	4	-	-	-	-	1	1	-	-	-	2	2	-
<b>SUBTOTAL</b>	<b>1,401</b>	<b>1,089</b>	<b>595</b>	<b>420</b>	<b>31</b>	<b>30</b>	<b>1</b>	<b>3</b>	<b>48</b>	<b>73</b>	<b>21</b>	<b>39</b>	<b>602</b>	<b>460</b>	<b>103</b>	<b>64</b>
<b>Graduate Students-Part Time</b>																
First-time Ph.D.	5	11	-	-	-	1	-	-	-	-	-	1	3	7	2	2
All others Masters/Doctoral	346	535	22	13	17	37	-	3	15	20	6	10	255	425	31	27
Unclassified	168	232	11	7	4	14	-	-	4	10	4	6	91	147	54	48
<b>SUBTOTAL</b>	<b>519</b>	<b>778</b>	<b>33</b>	<b>20</b>	<b>21</b>	<b>52</b>	<b>-</b>	<b>3</b>	<b>19</b>	<b>30</b>	<b>10</b>	<b>17</b>	<b>349</b>	<b>579</b>	<b>87</b>	<b>77</b>
<b>TOTAL Graduates</b>	<b>1,920</b>	<b>1,867</b>	<b>628</b>	<b>440</b>	<b>52</b>	<b>82</b>	<b>1</b>	<b>6</b>	<b>67</b>	<b>103</b>	<b>31</b>	<b>56</b>	<b>951</b>	<b>1,039</b>	<b>190</b>	<b>141</b>
<b>Total University</b>	<b>4,639</b>	<b>4,694</b>	<b>777</b>	<b>578</b>	<b>157</b>	<b>236</b>	<b>5</b>	<b>16</b>	<b>339</b>	<b>422</b>	<b>123</b>	<b>171</b>	<b>2,600</b>	<b>2,690</b>	<b>638</b>	<b>581</b>

\* This report indicates the ethnic origin of students, as reported by the students. Definitions are below.  
 Numbers 1-5 apply to all except those who are Nonresident aliens.

1. Asian/Pacific Islander: A person having origins in any of the original peoples of the Far East, Southeast Asia, the Indian Subcontinent, or Pacific Islands
2. Black, non-Hispanic: A person having origins in any of the black racial groups of Africa (except those of Hispanic origin)
3. White, non-Hispanic: A person having origins in any of the original peoples of Europe, North Africa, or the Middle East (except those of Hispanic origin)
4. Hispanic: A person of Mexican, Puerto Rican, Cuban, Central or South American, or other Spanish culture or origin, regardless of race
5. American Indian/Alaska Native: A person having origins in any of the original peoples of North America and who maintains cultural identification through tribal affiliation or community recognition
6. Nonresident alien: A person who is not a citizen or national of the United States and who is in this country on a visa or temporary basis and does not have the right to remain indefinitely
7. Race/Ethnicity Unknown: Used only if the student did not select a racial-ethnic designation and the institution finds it impossible to place the student in one of the aforementioned racial/ethnic categories

Source: IPEDS-EF1 Report (EF1PRE). Totals may differ from internal University Student Information System reports. Simon Bern Executive students are excluded.

# UNIVERSITY OF ROCHESTER

## Geographic Distribution of Full-time Students

FALL 2007 (as of October 12, 2007)

		ALL		Arts & Sciences		Engineering		Simon School	Warner School	Eastman		SMD	Nursing		Eastman Dental*		
		UGs	Grads	UGs	Grads	UGs	Grads	Grads	Grads	UGs	Grads	Grads	UGs	Grads	Grads		
Middle Atlantic Region	District of Columbia	10	3	9	-	-	1	-	-	-	-	-	2	1	-	-	
	Delaware	9	1	7	1	1	-	-	-	-	-	-	-	1	-	-	
	Maryland	126	29	104	7	6	4	-	-	2	16	8	8	-	-	-	
	New Jersey	228	32	206	5	9	6	4	1	12	9	6	1	-	-	1	
	New York	2,179	712	1,907	128	100	60	164	98	105	52	160	67	37	-	13	
<b>NY % of Total</b>		<b>45%</b>	<b>28%</b>														
	Pennsylvania	286	76	231	34	23	8	2	-	30	15	16	2	1	-	-	
	West Virginia	1	2	1	1	-	-	-	-	-	1	-	-	-	-	-	
New England Region	Connecticut	106	36	82	12	7	4	1	-	16	12	7	1	-	-	-	
	Massachusetts	292	40	261	17	16	9	-	-	15	5	9	-	-	-	-	
	Maine	25	8	22	2	2	1	-	-	1	1	4	-	-	-	-	
	New Hampshire	47	9	45	2	-	1	-	-	1	2	3	2	-	-	-	
	Rhode Island	22	3	17	2	5	-	-	-	-	-	1	-	-	-	-	
	Vermont	32	6	27	2	3	2	-	-	-	1	-	1	1	-	1	
Great Lakes Region	Illinois	87	23	62	7	5	1	3	-	20	7	5	-	-	-	-	
	Indiana	7	6	4	4	2	1	-	-	1	1	-	-	-	-	-	
	Michigan	46	17	30	5	-	4	-	1	14	5	2	2	-	-	-	
	Ohio	135	40	104	13	8	4	2	-	21	13	7	2	1	-	-	
	Wisconsin	28	15	13	6	2	2	-	-	13	3	4	-	-	-	-	
South-eastern Region	Alabama	6	3	6	1	-	-	-	-	-	-	2	-	-	-	-	
	Arkansas	1	2	1	-	-	1	-	-	-	-	1	-	-	-	-	
	Florida	57	18	39	6	5	1	1	-	13	5	4	-	-	-	1	
	Georgia	19	15	11	4	1	1	2	1	7	4	2	-	1	-	-	
	Kentucky	7	8	5	3	-	-	1	1	2	2	-	-	1	-	-	
	Louisiana	4	6	3	3	-	1	-	1	1	1	-	-	-	-	-	
	Mississippi	4	-	4	-	-	-	-	-	-	-	-	-	-	-	-	
	North Carolina	29	14	19	7	1	1	1	2	8	3	-	1	-	-	-	
	South Carolina	14	4	6	3	1	-	-	-	7	1	-	-	-	-	-	
	Tennessee	23	9	17	4	2	-	1	-	4	3	1	-	-	-	-	
	Virginia	63	25	43	10	5	1	1	1	15	10	2	-	-	-	-	
	Central Region	Iowa	7	11	4	4	-	1	-	-	3	5	1	-	-	-	-
		Kansas	12	5	10	1	-	-	-	-	2	-	4	-	-	-	-
Minnesota		26	8	16	2	-	-	-	-	9	5	1	1	-	-	-	
Missouri		15	10	12	5	-	2	-	-	3	1	2	-	-	-	-	
North Dakota		5	-	3	-	-	-	-	-	2	-	-	-	-	-	-	
Nebraska		4	2	4	1	-	1	-	-	-	-	-	-	-	-	-	
South Dakota		2	-	-	-	1	-	-	-	-	-	-	1	-	-	-	
South-western Region	Arizona	16	7	13	2	-	-	1	-	1	2	2	2	-	-	-	
	New Mexico	8	7	6	2	-	-	-	1	2	1	3	-	-	-	-	
	Oklahoma	9	5	5	2	-	-	-	-	3	2	1	1	-	-	-	
	Texas	87	31	62	14	2	3	2	1	22	8	3	1	-	-	-	
Mountain Region	Colorado	27	19	14	6	3	3	2	-	10	5	3	-	-	-	-	
	Idaho	5	4	4	1	-	1	1	-	1	-	-	-	-	-	1	
	Montana	8	3	5	1	-	-	-	-	2	2	-	1	-	-	-	
	Nevada	6	2	3	-	1	-	1	-	2	-	1	-	-	-	-	
	Utah	4	15	4	2	-	3	1	-	-	2	7	-	-	-	-	
	Wyoming	1	-	1	-	-	-	-	-	-	-	-	-	-	-	-	
Pacific Region	Alaska	9	3	7	1	-	1	-	-	2	1	-	-	-	-	-	
	California	142	68	108	27	5	5	3	2	22	18	13	7	-	-	-	
	Hawaii	13	3	11	-	-	-	1	-	2	1	1	-	-	-	-	
	Oregon	34	18	28	10	2	2	1	-	2	5	-	2	-	-	-	
	Washington	41	16	27	4	1	2	1	-	10	5	4	3	-	-	-	
Other	Guam	-	-	-	-	-	-	-	-	-	-	-	-	-	-	-	
	Puerto Rico	5	10	5	1	-	-	1	1	-	-	7	-	-	-	-	
	Virgin Islands	1	-	1	-	-	-	-	-	-	-	-	-	-	-	-	
	AE**	2	-	2	-	-	-	-	-	-	-	-	-	-	-	-	
	AP	1	-	1	-	-	-	-	-	-	-	-	-	-	-	-	
	Foreign	426	1,130	327	286	22	218	254	23	73	134	175	4	4	-	36	
	Unknown	-	18	-	1	-	2	-	-	-	-	10	-	-	-	5	
Military Base	-	4	-	-	-	2	-	-	-	-	1	-	-	-	-		
<b>TOTAL</b>		<b>4,809</b>	<b>2,561</b>	<b>3,969</b>	<b>662</b>	<b>241</b>	<b>360</b>	<b>452</b>	<b>137</b>	<b>497</b>	<b>363</b>	<b>484</b>	<b>102</b>	<b>45</b>	<b>58</b>		

\*Eastman Dental Center are non-matriculated. Other non-matriculated students are not reported on this table.

\*\*Military: US Armed Forces Overseas.

Source: UR-13 Reports

**UNIVERSITY OF ROCHESTER**
**UNDERGRADUATE ENROLLMENT BY MAJOR - OFFICIAL & UNOFFICIAL**
**By School, All Students, Fall Semester**

	2005-06		2006-07		2007-08	
	Unofficial	Official	Unofficial	Official	Unofficial	Official
<b>THE COLLEGE</b>						
<b>Arts &amp; Sciences</b>						
African & African-American Studies	1	8	2	9	4	8
American Sign Language	6	15	10	14	5	17
Anthropology	18	28	18	29	17	38
<b>Art &amp; Art History</b>	<b>13</b>	<b>15</b>	<b>20</b>	<b>28</b>	<b>19</b>	<b>36</b>
Art History	7	5	13	8	12	12
Studio Arts	6	10	7	20	7	24
<b>Biological Sciences</b>	<b>145</b>	<b>210</b>	<b>154</b>	<b>239</b>	<b>227</b>	<b>225</b>
Biochemistry	59	52	50	45	81	41
Cell & Development	12	38	14	34	19	14
Ecology & Evol Biol	3	24	11	27	14	32
Microbiology	14	17	11	27	16	39
Molecular Genetics	23	32	28	46	40	49
Neuroscience	34	47	40	60	57	50
Biology	329	96	297	101	312	110
Brain & Cognitive Sciences	24	58	24	70	32	72
Chemistry	47	37	59	38	75	62
Clinical & Social Psychology	116	204	137	218	132	224
Cognitive Science	2	-	1	-	-	-
Computer Science	55	53	42	50	53	44
<b>Earth &amp; Environmental Sciences</b>	<b>21</b>	<b>18</b>	<b>19</b>	<b>22</b>	<b>26</b>	<b>25</b>
Biology-Geology	2	1	1	-	-	-
Environmental Sciences	4	5	10	6	14	10
Environmental Studies	14	4	7	4	7	4
Geological Sciences	1	8	1	12	5	11
Economics	130	188	146	159	154	116
Financial Economics	-	-	-	-	19	42
English	82	127	79	139	78	146
Film and Media Studies	25	25	18	21	18	23
Health & Society	20	45	17	41	19	54
History	72	83	66	101	68	113
Interdepartmental	3	18	5	17	8	13
Linguistics	5	14	14	21	24	20
<b>Mathematics</b>	<b>59</b>	<b>101</b>	<b>64</b>	<b>93</b>	<b>82</b>	<b>99</b>
Applied Mathematics	3	16	6	17	13	17
Computer Science:Mathematics	2	-	2	-	1	-
Mathematics	49	83	53	71	62	77
Mathematics-Statistics	5	2	3	5	6	5
<b>Modern Languages &amp; Cultures</b>	<b>27</b>	<b>85</b>	<b>38</b>	<b>72</b>	<b>47</b>	<b>86</b>
Comparative Literature	-	4	1	4	1	1
French	11	15	13	23	17	21
German	4	13	2	10	3	15
Japanese	1	19	8	10	13	11
Russian	1	7	1	3	1	7
Spanish	10	27	13	22	12	31
Music	25	25	32	25	38	28
Philosophy	4	30	14	20	23	27
<b>Physics and Astronomy</b>	<b>64</b>	<b>64</b>	<b>62</b>	<b>74</b>	<b>68</b>	<b>68</b>
Physics	38	51	36	61	45	54
Physics and Astronomy	26	13	26	13	23	14
Political Science	102	172	108	171	128	174
<b>Religion &amp; Classics</b>	<b>12</b>	<b>58</b>	<b>10</b>	<b>54</b>	<b>14</b>	<b>47</b>
Classics	5	7	4	6	6	4
Religious Studies	7	51	6	48	8	43
Russian Studies	2	2	2	2	1	3
Sociology	2	-	-	-	-	-
Statistics	2	16	7	14	7	10
Women's Studies	1	4	2	5	1	7
<b>Miscellaneous (Uncertain of Major)</b>	<b>513</b>	<b>-</b>	<b>548</b>	<b>-</b>	<b>481</b>	<b>-</b>
3-2 Simon	3	-	-	-	-	-
Unknown	510	-	548	-	481	-
<b>SUBTOTAL</b>	<b>1,927</b>	<b>1,799</b>	<b>2,015</b>	<b>1,847</b>	<b>2,180</b>	<b>1,937</b>

**UNIVERSITY OF ROCHESTER**  
**UNDERGRADUATE ENROLLMENT BY MAJOR - OFFICIAL & UNOFFICIAL**  
**By School, All Students, Fall Semester**

	2005-06		2006-07		2007-08	
	Unofficial	Official	Unofficial	Official	Unofficial	Official
<b>THE COLLEGE</b>						
<b>School of Engineering and Applied Sciences</b>						
Biomedical Engineering	118	70	159	73	159	81
Chemical Engineering	47	26	62	29	50	51
Electrical & Computer Engineering	46	27	53	24	43	30
Engineering Science	26	1	24	-	15	2
Geomechanics	-	3	1	-	1	-
Interdepartmental Engineering	1	-	4	-	2	-
Mechanical Engineering	99	44	76	62	72	57
Optics	35	32	35	34	45	27
<b>SUBTOTAL</b>	<b>372</b>	<b>203</b>	<b>414</b>	<b>222</b>	<b>387</b>	<b>248</b>
<b>THE COLLEGE SUBTOTAL</b>	<b>2,299</b>	<b>2,002</b>	<b>2,429</b>	<b>2,069</b>	<b>2,567</b>	<b>2,185</b>
<b>Eastman School of Music</b>						
Applied Music	1	428	1	412	-	444
Composition	-	13	-	14	-	14
Jazz & Contemp Media	-	41	1	43	-	35
Jazz & Contemp Media - Writing	-	2	-	2	-	1
Music Education - General	-	9	-	4	-	5
Music Education - Instrumental	-	54	-	51	-	59
Music Education - Vocal	-	16	-	17	-	16
Music Theory	-	12	-	16	-	15
Musical Arts	-	2	-	1	-	5
<b>SUBTOTAL</b>	<b>1</b>	<b>577</b>	<b>2</b>	<b>560</b>	<b>-</b>	<b>594</b>
<b>School of Nursing</b>	<b>-</b>	<b>153</b>	<b>-</b>	<b>203</b>	<b>-</b>	<b>200</b>
<b>TOTAL UNIVERSITY</b>	<b>2,300</b>	<b>2,732</b>	<b>2,431</b>	<b>2,832</b>	<b>2,567</b>	<b>2,979</b>

Source: UR-12 New - 10/14/05 (fall '05) 10/13/06 (fall '06), and 10/12/07 (Fall '07)

Notes:

Official majors have been declared by the student and approved by the school. Students with double majors and/or double degrees are counted in each major and/or degree.

Figures include full, part and X-time students. X-time indicates students are not registered for course work in the semester. These students are normally enrolled in a 'place-holder' course, which makes them eligible to register for courses at Rochester in a subsequent semester.

**UNIVERSITY OF ROCHESTER**

**Graduate Majors**

**By School, All Students, Fall Semester** (Those with double majors and/or double degrees are counted in each major and/or degree)

	2005-06			2005-06		2006-07			2006-07		2007-08			2007-08	
	Full	Part	X	Masters	Doctoral	Full	Part	X	Masters	Doctoral	Full	Part	X	Masters	Doctoral
<b>THE COLLEGE</b>															
<b>Arts &amp; Sciences</b>															
Biology	40	-	1	1	40	40	-	1	4	37	44	2	-	2	44
Brain & Cognitive Science	31	-	-	-	31	27	-	1	-	28	28	-	-	-	28
Chemistry	75	1	6	1	81	84	-	6	1	89	92	-	6	4	94
Clinical, Social & Developmental Psychology	49	1	2	1	51	50	-	2	-	52	50	-	6	-	56
Computer Science	43	-	-	1	42	40	-	3	1	42	44	1	1	1	45
Earth & Environmental Sciences (Geology)	11	-	1	1	11	11	-	-	2	9	12	-	-	1	11
Economics	74	-	3	-	77	67	-	5	-	72	65	-	2	-	67
English	69	2	2	23	50	70	1	3	26	48	60	2	5	23	44
History	36	3	2	6	35	35	2	5	11	31	39	3	2	12	32
Linguistics	3	-	-	2	1	2	-	-	2	-	4	-	-	1	3
Mathematics (Math/Statistics)	28	-	-	1	27	26	1	-	-	27	23	-	1	-	24
Modern Languages & Cultures, Comp Lit	2	-	-	2	-	-	-	-	-	-	2	-	-	2	-
Optics	-	-	-	-	-	-	-	-	-	-	1	-	-	-	1
Philosophy	24	-	3	-	27	24	1	3	2	26	21	1	3	1	24
Physics and Astronomy (Physics)	106	-	5	1	110	111	-	8	-	119	109	-	4	7	106
Political Science	32	-	1	-	33	32	-	3	-	35	42	-	-	-	42
Visual & Cultural Studies	37	1	3	1	40	35	-	2	-	37	33	-	6	-	39
<b>SUBTOTAL</b>	<b>660</b>	<b>8</b>	<b>29</b>	<b>41</b>	<b>656</b>	<b>654</b>	<b>5</b>	<b>42</b>	<b>49</b>	<b>652</b>	<b>669</b>	<b>9</b>	<b>36</b>	<b>54</b>	<b>660</b>

<b>School of Engineering and Applied Sciences</b>															
Biomedical Engineering	44	1	-	9	36	51	4	1	16	40	50	8	-	21	37
Chemical Engineering	41	3	-	8	36	44	1	-	9	36	43	3	-	15	31
Electrical Engineering	81	8	2	21	70	110	6	7	40	83	123	9	7	54	85
Electrical and Computer Engineering	4	-	-	4	-	15	-	-	15	-	5	-	-	5	-
Materials Science	20	4	-	2	22	22	3	1	2	24	20	1	-	-	21
Mechanical Engineering	21	7	-	8	20	25	6	-	7	24	28	4	1	12	21
Optics	88	4	4	20	76	86	4	5	14	81	94	4	-	17	81
<b>SUBTOTAL</b>	<b>299</b>	<b>27</b>	<b>6</b>	<b>72</b>	<b>260</b>	<b>353</b>	<b>24</b>	<b>14</b>	<b>103</b>	<b>288</b>	<b>363</b>	<b>29</b>	<b>8</b>	<b>124</b>	<b>276</b>

**THE COLLEGE SUBTOTAL**

<b>959</b>	<b>35</b>	<b>35</b>	<b>113</b>	<b>916</b>	<b>1,007</b>	<b>29</b>	<b>56</b>	<b>152</b>	<b>940</b>	<b>1,032</b>	<b>38</b>	<b>44</b>	<b>178</b>	<b>936</b>
------------	-----------	-----------	------------	------------	--------------	-----------	-----------	------------	------------	--------------	-----------	-----------	------------	------------

	2005-06			2005-06		2006-07			2006-07		2007-08			2007-08	
	Full	Part	X	Masters	Doctoral	Full	Part	X	Masters	Doctoral	Full	Part	X	Masters	Doctoral
<b>Simon Graduate School of Business Administration</b>															
Accountancy - Business	-	-	-	-	-	-	-	-	-	-	18	1	0	19	0
Business Administration	337	160	4	450	51	379	212	1	560	32	404	228	-	595	37
Business Admin. - Executive Development	79	-	-	79	-	62	-	-	62	-	40	-	-	40	-
Business Admin. - Bern, Switzerland	35	-	-	35	-	27	-	-	27	-	25	-	-	25	-
<b>SUBTOTAL</b>	<b>451</b>	<b>160</b>	<b>4</b>	<b>564</b>	<b>51</b>	<b>468</b>	<b>212</b>	<b>1</b>	<b>649</b>	<b>32</b>	<b>487</b>	<b>229</b>	<b>-</b>	<b>679</b>	<b>37</b>

**UNIVERSITY OF ROCHESTER**

**Graduate Majors**

**By School, All Students, Fall Semester** (Those with double majors and/or double degrees are counted in each major and/or degree)

**Warner Graduate School of Education and Human Development**

	2005-06			2005-06		2006-07			2006-07		2007-08			2007-08	
	Full	Part	X	Masters		Full	Part	X	Masters		Full	Part	X	Masters	
<b>Master's Programs</b>															
Counseling (MS)	28	28	2	58		20	39	3	62		35	39	2	76	
Education (MS)	34	61	2	97		30	53	3	86		28	57	10	95	
Higher Education (MS)	2	22	1	25		6	19	1	26		6	25	-	31	
Human Develop (MS)	4	9	-	13		4	4	2	10		4	12	-	16	
School Administration (MS)	-	34	1	35		1	33	2	36		-	31	-	31	
Subject Area (MAT)	9	-	-	9		2	2	-	4		-	-	-	-	
Teaching and Curriculum (MS)	-	-	1	1		-	-	1	1		-	-	1	1	
<b>MASTER'S SUBTOTAL</b>	<b>77</b>	<b>154</b>	<b>7</b>	<b>238</b>		<b>63</b>	<b>150</b>	<b>12</b>	<b>225</b>		<b>73</b>	<b>164</b>	<b>13</b>	<b>250</b>	

				2005-06					2006-07					2007-08	
	Full	Part	X		Doctoral	Full	Part	X		Doctoral	Full	Part	X		Doctoral
<b>Doctoral Programs</b>															
Education (PhD)	37	35	12		84	40	39	13		92	46	44	13		103
Education (EdD)	15	89	25		129	20	123	11		154	18	148	12		178
<b>DOCTORAL SUBTOTAL</b>	<b>52</b>	<b>124</b>	<b>37</b>		<b>213</b>	<b>60</b>	<b>162</b>	<b>24</b>		<b>246</b>	<b>64</b>	<b>192</b>	<b>25</b>		<b>281</b>

	2005-06			2005-06		2006-07			2006-07		2007-08			2007-08	
	Full	Part	X	Masters	Doctoral	Full	Part	X	Masters	Doctoral	Full	Part	X	Masters	Doctoral
<b>SUBTOTAL</b>	<b>129</b>	<b>278</b>	<b>44</b>	<b>238</b>	<b>213</b>	<b>123</b>	<b>312</b>	<b>36</b>	<b>225</b>	<b>246</b>	<b>137</b>	<b>356</b>	<b>38</b>	<b>250</b>	<b>281</b>

	2005-06			2005-06		2006-07			2006-07		2007-08			2007-08	
	Full	Part	X	Masters	Doctoral	Full	Part	X	Masters	Doctoral	Full	Part	X	Masters	Doctoral
<b>Eastman School of Music</b>															
Accompanying	12	-	-	2	10	13	-	1	6	8	18	3	1	10	12
Composition	21	-	-	11	10	18	3	-	10	11	24	1	-	8	17
Conducting (Choral/Orchestral/Wind Ensemble)	11	-	1	7	5	12	-	2	8	6	12	1	2	7	8
Early Music History	4	-	-	3	1	3	-	-	-	3	2	1	-	-	3
Ethnomusicology	-	-	-	-	-	3	1	-	4	-	3	1	1	4	1
Jazz Studies&Contemp Media	13	2	1	8	8	15	2	2	7	12	17	4	-	12	9
Jazz Studies&Contemp Media-Writing	-	-	-	-	-	1	-	-	1	-	2	-	-	2	-
Music Education - Graduate & Summers Only	18	22	12	40	12	20	22	13	42	13	21	15	16	38	14
Music Theory	26	4	1	-	31	22	5	2	-	29	20	8	1	-	29
Musicology	16	4	2	-	22	16	3	2	-	21	16	4	3	-	23
Opera & Opera Stage Directing	3	-	-	3	-	3	-	-	3	-	3	-	-	3	-
Performance & Literature	244	21	15	145	135	236	13	21	130	140	237	22	18	129	148
Theory Pedagogy	10	1	-	10	1	10	-	-	8	2	11	1	-	7	5
<b>SUBTOTAL</b>	<b>378</b>	<b>54</b>	<b>32</b>	<b>229</b>	<b>235</b>	<b>372</b>	<b>49</b>	<b>43</b>	<b>219</b>	<b>245</b>	<b>386</b>	<b>61</b>	<b>42</b>	<b>220</b>	<b>289</b>

**UNIVERSITY OF ROCHESTER**

**Graduate Majors**

**By School, All Students, Fall Semester** (Those with double majors and/or double degrees are counted in each major and/or degree)

	2005-06			2005-06		2006-07			2006-07		2007-08			2007-08	
	Full	Part	X	Masters	Doctoral	Full	Part	X	Masters	Doctoral	Full	Part	X	Masters	Doctoral
<b>School of Medicine &amp; Dentistry</b>															
<i>Notes: Figures do not include M.D. student enrollments.</i>															
<i>First-year Ph.D. student clusters are reported in the program name.</i>															
Anatomy & Neurobiology/Anatomy	8	-	-	2	6	15	-	-	3	12	12	-	-	2	10
Biochem Molecular Bio & Genetics	30	-	-	-	30	7	-	-	-	7	17	-	-	-	17
Biochemistry	39	-	-	-	39	57	-	-	1	56	49	-	-	-	49
Biophysics	18	-	-	-	18	19	-	-	-	19	19	-	-	-	19
Cardiovascular Sciences	2	-	-	-	2	2	-	-	-	2	-	-	-	-	-
Cellular & Molecular Basis of Disease	19	-	-	-	19	3	-	-	-	3	6	-	-	-	6
Dental Science	2	-	-	2	-	-	-	1	1	-	-	-	-	-	-
Epidemiology	12	-	-	1	11	13	-	-	-	13	14	1	-	-	15
Genetics	17	-	-	-	17	31	-	1	-	32	36	-	-	-	36
Genetics Genomics & Dev	15	-	-	-	15	7	-	-	-	7	8	-	-	-	8
Health Services Research & Policy	15	-	1	-	16	18	-	-	-	18	19	-	-	-	19
Immunology Microbiol & Vacc Biol	26	-	-	1	25	17	-	-	-	17	14	1	-	-	15
Microbiology & Immunology	66	9	2	19	58	74	11	2	17	70	77	7	7	16	75
Molecular Biophy & Structural Biochem	9	-	-	-	9	5	-	-	-	5	3	-	-	-	3
Marriage & Family Therapy	21	10	-	31	-	24	7	1	32	-	22	11	-	33	-
Neuroscience	41	-	-	-	41	41	-	1	-	42	37	-	1	1	37
Pathology	28	1	1	1	29	36	-	-	-	36	37	-	-	-	37
Pathways of Human Disease	12	-	-	-	12	8	-	-	-	8	10	-	-	-	10
Pharmacology	29	2	-	2	29	41	1	1	1	42	38	-	1	-	39
Public Health	12	22	7	41	-	13	23	2	38	-	7	24	6	37	-
Public Health Clinical Investigation	12	36	19	62	5	12	39	15	62	4	9	38	16	59	4
Statistics & Medical Statistics	14	2	-	4	12	16	3	1	4	16	16	2	2	3	17
Toxicology	33	-	-	-	33	34	-	-	-	34	32	-	-	-	32
Visiting Student in Residence	-	-	-	-	-	-	-	-	-	-	8	-	-	-	8
<b>SUBTOTAL</b>	<b>480</b>	<b>82</b>	<b>30</b>	<b>166</b>	<b>426</b>	<b>493</b>	<b>84</b>	<b>25</b>	<b>159</b>	<b>443</b>	<b>490</b>	<b>84</b>	<b>33</b>	<b>151</b>	<b>456</b>

	2005-06			2005-06		2006-07			2006-07		2007-08			2007-08	
	Full	Part	X	Masters	Doctoral	Full	Part	X	Masters	Doctoral	Full	Part	X	Masters	Doctoral
<b>School of Nursing</b>															
Acute Critical Care	2	7	-	9	-	2	4	-	6	-	1	12	-	13	-
Acute Care Cardiovascular	-	1	-	1	-	1	2	1	4	-	2	2	2	6	-
Acute Care Cardiopulmonary	-	1	-	1	-	-	-	-	-	-	-	-	-	-	-
Adult Nurse Practitioner	2	22	3	27	-	4	22	2	28	-	3	22	1	26	-
Care of Children & Families	2	17	3	21	1	4	21	5	30	-	4	18	4	26	-
Child/Adolsecent Psych	-	-	-	-	-	1	5	-	6	-	2	8	-	10	-
Clinical Nurse Leader	-	-	-	-	-	-	3	-	3	-	3	4	1	8	-
Family Health Nurse Practitioner	6	27	2	35	-	8	24	3	35	-	5	25	5	35	-
Gerontological Nurse Practitioner	-	2	1	3	-	-	1	-	1	-	-	-	-	-	-
Health Practice Research	-	-	-	-	-	20	7	10	1	36	27	6	9	5	37
Leadership in Health Care Systems	-	17	1	18	-	1	28	3	30	2	-	27	3	30	-
Medical Surgical Nursing	-	-	-	-	-	-	-	-	-	-	1	-	-	1	-
Neonatal Nurse Practitioner	-	9	-	9	-	-	1	-	1	-	-	-	-	-	-
Nursing	22	12	4	-	38	-	-	1	-	1	-	-	-	-	-
Pediatric Nurses Prac/Psych Mental Health	3	1	-	4	-	-	-	1	1	-	-	-	-	-	-
Psych Mental Health	1	11	-	12	-	2	10	2	14	-	2	10	1	13	-
<b>SUBTOTAL</b>	<b>38</b>	<b>127</b>	<b>14</b>	<b>140</b>	<b>39</b>	<b>43</b>	<b>128</b>	<b>28</b>	<b>160</b>	<b>39</b>	<b>49</b>	<b>135</b>	<b>26</b>	<b>173</b>	<b>37</b>

	2005-06			2005-06		2006-07			2006-07		2007-08			2007-08	
	Full	Part	X	Masters	Doctoral	Full	Part	X	Masters	Doctoral	Full	Part	X	Masters	Doctoral
<b>UNIVERSITY TOTALS</b>	<b>2,433</b>	<b>736</b>	<b>159</b>	<b>1,450</b>	<b>1,878</b>	<b>2,506</b>	<b>814</b>	<b>189</b>	<b>1,564</b>	<b>1,945</b>	<b>2,581</b>	<b>903</b>	<b>183</b>	<b>1,651</b>	<b>2,016</b>

Source: UR-12 New 10/14/05 (fall '05), 10/13/06 (fall '06) and 10/12/07 (fall '07). Fall 2005 Simon School figures adjusted as of 11/1/05.



**UNIVERSITY OF ROCHESTER**

**Course Credit Hours & Enrollments by School and Subject Area  
Reported for Undergraduate & Graduate Students**

Arts & Sciences	NUMBER OF CREDIT HOURS						NO. OF COURSE ENROLLMENTS					
	Fall 2005		Fall 2006		Fall 2007		Fall 2005		Fall 2006		Fall 2007	
	UG	Grad	UG	Grad	UG	Grad	UG	Grad	UG	Grad	UG	Grad
African-American Studies	16	-	76	3	60	-	4	1	19	2	15	-
American Sign Language	850	12	908	4	1,056	-	213	3	227	1	264	-
Anthropology	900	23	1,052	16	1,214	27	226	6	263	4	303	8
Art & Art History	1,162	184	1,484	164	1,244	168	291	58	370	49	309	48
Art & Art History - Art History	552	184	788	164	492	168	138	58	196	49	121	48
Art & Art History - Studio Arts	610	-	696	-	752	-	153	-	174	-	188	-
Biology	5,182	336	5,418	337	5,644	371	1,519	103	1,625	109	1,637	116
Brain & Cognitive Science	2,965	235	3,427	189	3,689	250	800	68	998	49	1,079	68
Brain & Cognitive Science	2,518	218	2,962	185	3,124	247	644	62	832	48	861	67
Center for Visual Science	-	-	-	-	7	-	-	-	-	-	2	-
Neuroscience	447	17	465	4	558	3	156	6	166	1	196	1
Chemistry	4,634	558	4,900	661	5,169	680	1,242	185	1,374	212	1,427	254
Clinical & Social Psychology	4,504	393	4,606	368	4,619	405	1,207	117	1,225	116	1,248	135
Clinical & Soc Sciences in Psy	3,545	393	3,652	364	3,619	405	951	117	965	115	956	135
Psychology	959	-	954	4	1,059	-	256	-	260	1	292	-
Computer Science	1,809	421	1,726	441	1,508	490	467	100	448	99	386	115
Dance	314	6	330	-	366	-	149	2	154	-	170	-
Earth & Environmental Sciences	496	93	526	64	525	102	124	29	130	23	132	30
Economics	3,806	717	3,525	695	3,476	671	881	217	881	193	869	194
English	3,720	652	3,719	754	3,696	544	940	184	949	204	927	159
Film and Media Studies	40	-	56	-	66	-	10	-	14	-	17	-
Health & Society	183	-	254	-	743	-	46	-	64	-	186	-
History	2,671	346	2,158	356	2,395	399	668	97	539	89	599	112
Linguistics	836	54	688	32	992	19	209	14	167	10	248	6
Literary Translational Studies	-	-	-	-	4	-	-	-	-	-	1	-
Mathematics	5,972	330	6,339	262	7,057	236	1,482	84	1,573	72	1,780	72
Modern Languages & Cultures	4,184	72	4,376	58	4,610	88	1,030	18	1,089	17	1,127	23
Chinese	280	6	300	4	336	-	56	1	64	1	69	-
Comparative Literature	208	4	90	4	92	4	54	2	24	2	23	2
French	532	20	620	16	540	32	138	5	161	4	142	8
German	476	20	464	24	400	36	119	5	116	6	100	9
Italian	584	-	560	-	708	-	154	-	146	-	180	-
Japanese	648	10	628	6	680	-	145	2	143	3	149	-
Polish	12	-	30	-	26	-	3	-	8	-	7	-
Russian	296	-	452	-	552	-	74	-	119	-	138	-
Spanish	1,148	12	1,232	4	1,276	16	287	3	308	1	319	4
Music	1,726	-	1,713	-	2,257	-	638	-	646	-	802	-
Naval Science	176	-	112	-	100	-	44	-	28	-	25	-
Philosophy	1,964	118	2,272	144	2,003	151	491	46	568	55	502	56
Physics & Astronomy	3,087	777	3,040	794	3,145	674	784	173	773	203	799	181
Astronomy	520	80	512	60	448	32	130	16	128	15	112	13
Physics	2,567	697	2,528	734	2,697	642	654	157	645	188	687	168
Political Science	3,240	295	3,388	318	3,497	406	805	80	854	84	868	116
Religion & Classics	2,531	15	2,841	8	3,024	3	623	4	699	2	739	1
Classical Greek	85	-	64	-	86	-	18	-	14	-	18	-
Classical Studies	288	-	324	-	308	-	72	-	81	-	77	-
Judaic Studies	18	-	30	-	-	-	8	-	15	-	-	-
Religion & Classics - Arabic	256	-	320	4	276	-	64	-	80	1	69	-
Religion & Classics - Hebrew	156	-	143	4	140	-	39	-	36	1	35	-
Religion & Classics - Latin	190	4	174	-	110	3	50	1	45	-	28	1
Religion & Classics - Yiddish	8	-	-	-	-	-	2	-	4	-	-	-
Religion & Classics - Sanskrit	40	-	16	-	96	-	10	-	4	-	24	-
Religion & Classics	1,490	11	1,770	-	2,008	-	360	3	424	-	488	-
Russian Studies	126	-	-	-	118	-	39	-	-	-	34	-
Sociology	455	-	408	4	352	4	114	-	102	1	88	1
Statistics	688	33	744	31	882	35	172	10	199	9	230	10
The College: Arts & Sciences	2,165	3	2,594	5	2,349	2	611	2	719	3	657	1
Wallis Institute of Political Economics	-	25	-	-	-	28	-	6	-	-	-	7
Women's Studies	164	-	32	-	32	-	47	-	14	-	14	-
<b>SUBTOTAL</b>	<b>60,565</b>	<b>5,698</b>	<b>62,692</b>	<b>5,708</b>	<b>65,893</b>	<b>5,753</b>	<b>15,951</b>	<b>1,607</b>	<b>16,711</b>	<b>1,606</b>	<b>17,482</b>	<b>1,713</b>
Study Abroad	1,072	-	856	-	936	-	73	-	58	-	64	-
<b>TOTAL</b>	<b>61,637</b>	<b>5,698</b>	<b>63,548</b>	<b>5,708</b>	<b>66,829</b>	<b>5,753</b>	<b>15,515</b>	<b>1,583</b>	<b>16,769</b>	<b>1,606</b>	<b>17,546</b>	<b>1,713</b>

School of Engineering & Applied Sciences	NUMBER OF CREDIT HOURS						NO. OF COURSE ENROLLMENTS					
	Fall 2005		Fall 2006		Fall 2007		Fall 2005		Fall 2006		Fall 2007	
	UG	Grad	UG	Grad	UG	Grad	UG	Grad	UG	Grad	UG	Grad
Biomedical Engineering	937	275	1,132	249	1,251	314	287	69	340	70	398	89
Chemical Engineering	591	337	748	361	900	344	151	88	195	97	234	84
Electrical and Computer Engineering	653	700	594	1,132	741	987	188	182	157	308	202	303
Engineering and Applied Science	36	-	-	-	-	-	9	-	-	-	-	-
Materials Science	-	86	-	78	-	60	-	18	-	22	-	20
Mechanical Engineering	1,470	257	1,614	254	1,566	284	385	75	412	69	403	81
Optics	476	756	486	801	588	935	119	229	122	231	148	240
<b>TOTAL</b>	<b>4,163</b>	<b>2,411</b>	<b>4,574</b>	<b>2,875</b>	<b>5,046</b>	<b>2,924</b>	<b>1,139</b>	<b>661</b>	<b>1,226</b>	<b>797</b>	<b>1,385</b>	<b>817</b>

**UNIVERSITY OF ROCHESTER**
**Course Credit Hours & Enrollments by School and Subject Area**
**Reported for Undergraduate & Graduate Students**

Simon Graduate School of Business Administration	NUMBER OF CREDIT HOURS						NO. OF COURSE ENROLLMENTS					
	Fall 2005		Fall 2006		Fall 2007		Fall 2005		Fall 2006		Fall 2007	
	UG	Grad	UG	Grad	UG	Grad	UG	Grad	UG	Grad	UG	Grad
Accounting	384	677	476	531	428	973	100	271	120	239	108	407
Applied Economics	-	93	-	33	-	57	-	31	-	11	-	19
Applied Statistics	16	284	-	-	-	-	8	142	-	-	-	-
Business Environ & Public Policy	-	117	-	111	-	171	-	39	-	37	-	57
Business Law	176	4	216	-	104	-	44	1	54	-	26	-
Competitive & Organizational Strategy	16	791	4	820	4	941	8	351	2	372	2	443
Computer & Information Sys	32	302	20	392	36	436	8	146	5	178	9	202
Exec. Program - Bern, Switzerland	-	-	-	240	-	225	-	-	-	80	-	75
Executive Development	-	703	-	579	-	748	-	185	-	153	-	194
Finance	162	987	195	1,113	281	1,033	42	329	49	371	71	344
General Business Admin	72	198	106	650	60	635	18	72	28	248	15	297
Health Sciences	-	132	-	270	-	384	-	44	-	90	-	128
Management Communications	-	-	-	-	1	138	-	-	-	-	1	138
Management Science Models	-	15	-	-	-	3	-	5	-	-	-	1
Marketing	200	645	209	543	194	822	50	215	52	181	49	274
Operations Management	52	165	36	243	8	171	13	55	9	81	2	57
2ENT	-	-	-	-	56	69	-	-	-	-	14	23
<b>TOTAL</b>	<b>1,110</b>	<b>5,113</b>	<b>1,262</b>	<b>5,525</b>	<b>1,172</b>	<b>6,806</b>	<b>291</b>	<b>1,886</b>	<b>319</b>	<b>2,041</b>	<b>297</b>	<b>2,659</b>

Eastman School of Music	NUMBER OF CREDIT HOURS						NO. OF COURSE ENROLLMENTS					
	Fall 2005		Fall 2006		Fall 2007		Fall 2005		Fall 2006		Fall 2007	
	UG	Grad	UG	Grad	UG	Grad	UG	Grad	UG	Grad	UG	Grad
Accompanying Class	0	0	0	0	58	13	0	0	0	0	47	13
Accompanying	65	47	56	62	-	90	51	19	44	24	-	19
Arts Leadership Curriculum	72	119	59	149	77	142	60	102	54	120	65	107
Composition	123	89	160	106	194	101	64	40	75	39	94	37
Conducting	108	104	110	82	110	82	54	51	55	39	55	39
Eastman Initiatives Curriculum	131	-	125	-	146	-	129	-	125	-	144	-
Eastman School of Music	-	-	-	-	-	-	-	83	-	86	-	105
English as a Second Language	-	-	42	36	39	45	-	-	14	12	13	15
Ensemble	922	91	868	93	941	85	552	72	525	81	564	72
Ethnomusicology	33	12	-	-	-	5	11	4	-	-	-	2
Guitar Class	12	4	14	10	20	8	6	2	7	5	10	4
Humanities	1,343	24	1,264	24	1,226	29	421	19	405	22	387	15
Jazz Studies & Contemp Media	227	56	268	75	225	102	162	34	182	46	154	64
Music Education	392	133	287	150	331	153	229	75	202	82	212	92
Music History	501	564	508	521	482	575	170	218	171	208	162	223
Musicology	15	155	4	159	-	129	4	40	1	43	-	34
Opera	107	42	94	28	62	29	48	26	36	15	24	16
Orchestration	-	20	-	8	-	8	-	10	-	4	-	4
Pedagogy	39	30	47	35	39	41	28	17	35	21	28	22
Performance	-	-	-	-	-	3	-	-	-	-	-	3
Sacred Music	4	13	-	2	-	-	2	8	-	2	-	-
Theory	1,420	619	1,410	580	1,583	579	592	225	605	209	671	201
<b>SUBTOTAL</b>	<b>5,513</b>	<b>2,121</b>	<b>5,316</b>	<b>2,119</b>	<b>5,533</b>	<b>2,219</b>	<b>2,583</b>	<b>1,045</b>	<b>2,536</b>	<b>1,058</b>	<b>2,630</b>	<b>1,087</b>
Applied Music	3,411	1,394	3,392	1,295	3,498	1,296	1,275	383	1,291	352	1,340	369
<b>SUBTOTAL</b>	<b>8,924</b>	<b>3,515</b>	<b>8,708</b>	<b>3,413</b>	<b>9,031</b>	<b>3,515</b>	<b>3,858</b>	<b>1,428</b>	<b>3,827</b>	<b>1,410</b>	<b>3,970</b>	<b>1,456</b>
Study Abroad	-	-	32	-	32	-	-	-	2	-	2	-
<b>TOTAL</b>	<b>8,924</b>	<b>3,515</b>	<b>8,740</b>	<b>3,413</b>	<b>9,063</b>	<b>3,515</b>	<b>3,858</b>	<b>1,428</b>	<b>3,829</b>	<b>1,410</b>	<b>3,972</b>	<b>1,456</b>

**UNIVERSITY OF ROCHESTER**

**Course Credit Hours & Enrollments by School and Subject Area**

**Reported for Undergraduate & Graduate Students**

**School of Medicine & Dentistry**

Does not include M.D. students

	NUMBER OF CREDIT HOURS						NO. OF COURSE ENROLLMENTS					
	Fall 2005		Fall 2006		Fall 2007		Fall 2005		Fall 2006		Fall 2007	
	UG	Grad	UG	Grad	UG	Grad	UG	Grad	UG	Grad	UG	Grad
Anatomy	-	112	-	191	-	211	-	17	-	43	-	41
Biochemistry	32	700	20	603	12	806	8	147	5	125	3	142
Biophysics	-	233	-	213	-	286	-	47	-	42	-	44
Biostatistics	52	460	8	466	8	555	23	135	2	131	2	144
General Dentistry	-	492	-	540	-	336	-	41	-	46	-	28
Genetics	-	383	-	490	-	617	-	86	-	102	-	118
Interdepartmental	158	825	231	698	234	813	35	304	50	277	52	307
Microbiology	267	937	385	946	433	1,197	68	286	97	275	109	274
Neuroscience	-	456	4	403	8	530	-	96	1	100	2	92
Oral Biology	-	46	-	23	2	35	-	37	-	23	1	36
Orthodontics	-	132	-	156	-	24	-	11	-	13	-	2
Pathology	-	347	-	369	-	627	-	84	-	81	-	116
Pedodontics	-	144	-	156	-	-	-	12	-	13	-	-
Periodontics	-	168	-	120	-	24	-	14	-	10	-	2
Pharmacology & Physiology	8	519	7	353	8	605	2	103	2	82	2	97
Preventive Medicine	14	797	23	919	19	860	4	243	7	263	5	233
Prosthodontics	-	84	-	96	-	72	-	7	-	8	-	6
Psychiatry	-	264	-	252	-	282	-	101	-	97	-	97
Temporomandibular Joint Disorder	-	84	-	48	-	72	-	7	-	4	-	6
Toxicology	-	352	-	271	-	371	-	61	-	43	-	52
<b>TOTAL</b>	<b>531</b>	<b>7,534</b>	<b>678</b>	<b>7,313</b>	<b>724</b>	<b>8,323</b>	<b>140</b>	<b>1,839</b>	<b>164</b>	<b>1,778</b>	<b>176</b>	<b>1,837</b>

**Warner Graduate School of Education and Human Development**

	NUMBER OF CREDIT HOURS						NO. OF COURSE ENROLLMENTS					
	Fall 2005		Fall 2006		Fall 2007		Fall 2005		Fall 2006		Fall 2007	
	UG	Grad	UG	Grad	UG	Grad	UG	Grad	UG	Grad	UG	Grad
Education	8	1,281	18	1,180	27	1,358	3	545	6	520	8	579
Field Experiences	-	227	-	220	-	207	-	88	-	85	-	77
Higher Education	-	1,172	9	1,415	31	1,636	-	394	3	475	9	548
<b>TOTAL</b>	<b>8</b>	<b>2,680</b>	<b>27</b>	<b>2,815</b>	<b>58</b>	<b>3,201</b>	<b>3</b>	<b>1,027</b>	<b>9</b>	<b>1,080</b>	<b>17</b>	<b>1,204</b>

**School of Nursing**

	NUMBER OF CREDIT HOURS						NO. OF COURSE ENROLLMENTS					
	Fall 2005		Fall 2006		Fall 2007		Fall 2005		Fall 2006		Fall 2007	
	UG	Grad	UG	Grad	UG	Grad	UG	Grad	UG	Grad	UG	Grad
Leadership in Health Care Systems	-	108	-	159	-	175	-	31	-	46	-	51
Nursing	1,402	924	1,992	1,037	2,036	1,024	369	248	511	301	510	285
Nursing/Community Center	421	187	581	95	592	117	136	66	184	39	181	36
<b>TOTAL</b>	<b>1,823</b>	<b>1,219</b>	<b>2,573</b>	<b>1,291</b>	<b>2,628</b>	<b>1,316</b>	<b>507</b>	<b>345</b>	<b>695</b>	<b>386</b>	<b>691</b>	<b>372</b>

**University Totals**

	NUMBER OF CREDIT HOURS						NO. OF COURSE ENROLLMENTS					
	Fall 2005		Fall 2006		Fall 2007		Fall 2005		Fall 2006		Fall 2007	
	UG	Grad	UG	Grad	UG	Grad	UG	Grad	UG	Grad	UG	Grad
<b>Fall each academic year</b>	<b>78,196</b>	<b>28,169</b>	<b>81,401</b>	<b>28,940</b>	<b>85,520</b>	<b>31,838</b>	<b>21,962</b>	<b>8,793</b>	<b>23,011</b>	<b>9,098</b>	<b>24,083</b>	<b>10,058</b>

Notes:

Students registered for leave of absence, including senior year in absentia, have been excluded.

Eastman Dental Center credit hours are included in SMD.

Cross-listed registrations are reported in the parent course.

A minimum number of credit hour totals have been rounded to the nearest whole number.

Source: Student Information System, Institutional Research Report

**UNIVERSITY OF ROCHESTER**  
**Distribution of Undergraduate Courses by Section Size**  
**Fall 2007**

Arts & Sciences	# Sect.	Avg. Size	1-9	10-19	20-29	30-39	40-49	50-99	100-199	200+
African-American Studies	3	4	3	-	-	-	-	-	-	-
American Sign Language	17	15	2	14	1	-	-	-	-	-
American Sign Language	17	15	2	14	1	-	-	-	-	-
Japanese Sign Language	-	-	-	-	-	-	-	-	-	-
Anthropology	12	25	-	5	3	3	1	-	-	-
Art & Art History	22	13	6	14	1	1	-	-	-	-
Art & Art History - Art History	7	17	2	3	1	1	-	-	-	-
Art & Art History - Studio Arts	15	11	4	11	-	-	-	-	-	-
Biology	35	47	4	15	4	3	-	4	3	2
Brain & Cognitive Science	18	60	-	3	5	2	-	5	2	1
Brain & Cognitive Science	12	73	-	1	2	2	-	4	2	1
Neuroscience	6	33	-	2	3	-	-	1	-	-
Chemistry	9	156	-	-	1	1	1	2	1	3
Clinical & Social Psychology	31	38	12	6	4	-	1	4	4	-
Clinical & Soc Sciences in Psy	25	36	9	6	3	-	1	3	3	-
Psychology	6	46	3	-	1	-	-	1	1	-
Computer Science	17	26	6	2	5	-	-	4	-	-
Dance	14	12	5	7	2	-	-	-	-	-
Earth & Environmental Sciences	8	16	5	2	-	-	-	1	-	-
Economics	15	57	-	2	3	2	2	5	-	1
English	46	20	9	20	10	4	1	2	-	-
Film & Media Studies	1	10	-	1	-	-	-	-	-	-
Health & Society	3	61	-	-	2	-	-	-	1	-
History	30	21	8	11	3	2	4	2	-	-
Linguistics	8	31	1	-	4	1	-	2	-	-
Mathematics	40	44	2	5	7	6	6	12	2	-
Modern Languages & Cultures	72	16	19	29	19	3	2	-	-	-
Chinese	4	17	-	3	1	-	-	-	-	-
Comparative Literature	1	22	-	-	1	-	-	-	-	-
French	11	14	3	6	2	-	-	-	-	-
German	10	11	5	3	2	-	-	-	-	-
Italian	11	16	4	3	3	-	1	-	-	-
Japanese	9	16	2	5	-	1	1	-	-	-
Polish	3	3	3	-	-	-	-	-	-	-
Russian	7	21	2	2	1	2	-	-	-	-
Spanish	16	20	-	7	9	-	-	-	-	-
Music	36	22	13	8	6	6	-	2	1	-
Naval Science	2	13	-	2	-	-	-	-	-	-
Philosophy	16	21	3	2	4	2	2	3	-	-
Physics & Astronomy	18	44	5	4	2	1	2	2	1	1
Astronomy	2	56	-	1	-	-	-	1	-	-
Physics	16	43	5	3	2	1	2	1	1	1
Political Science	20	43	-	6	3	4	1	4	2	-
Religion & Classics	32	23	10	7	8	1	2	3	1	-
Classical Greek	3	6	2	1	-	-	-	-	-	-
Classical Studies	2	39	-	-	1	-	-	1	-	-
Judaic Studies	-	-	-	-	-	-	-	-	-	-
Religion & Classics - Arabic	4	17	2	1	-	-	1	-	-	-
Religion & Classics - Hebrew	2	19	-	1	1	-	-	-	-	-
Religion & Classics - Latin	4	8	3	1	-	-	-	-	-	-
Religion & Classics - Yiddish	-	-	-	-	-	-	-	-	-	-
Religion & Classics - Sanskrit	2	12	1	-	1	-	-	-	-	-
Religion & Classics	15	32	2	3	5	1	1	2	1	-
Russian Studies	2	16	-	1	1	-	-	-	-	-
Sociology	4	22	1	2	-	-	-	1	-	-
Statistics	7	34	1	3	-	1	-	2	-	-
The College: Arts & Sciences	53	12	16	36	-	1	-	-	-	-
Women's Studies	1	12	-	1	-	-	-	-	-	-
<b>TOTAL</b>	<b>592</b>	<b>29</b>	<b>131</b>	<b>208</b>	<b>98</b>	<b>44</b>	<b>25</b>	<b>60</b>	<b>18</b>	<b>8</b>

**UNIVERSITY OF ROCHESTER**

**Distribution of Undergraduate Courses by Section Size**

**Fall 2007**

School of Engineering and Applied Sciences	#	Avg.								
	Sect.	Size	1-9	10-19	20-29	30-39	40-49	50-99	100-199	200+
Biomedical Engineering	8	51	-	2	-	1	2	3	-	-
Chemical Engineering	11	24	2	3	4	-	-	2	-	-
Electrical & Computer Engineering	14	20	1	7	5	1	-	-	-	-
Engineering and Applied Science	-	-	-	-	-	-	-	-	-	-
Mechanical Engineering	13	32	1	2	3	4	2	1	-	-
Optics	7	21	1	3	1	2	-	-	-	-
<b>TOTAL</b>	<b>53</b>	<b>29</b>	<b>5</b>	<b>17</b>	<b>13</b>	<b>8</b>	<b>4</b>	<b>6</b>	<b>-</b>	<b>-</b>

Simon Graduate School of Business Administration	#	Avg.								
	Sect.	Size	1-9	10-19	20-29	30-39	40-49	50-99	100-199	200+
Accounting	2	53	-	-	-	-	-	2	-	-
Business Law	2	13	1	1	-	-	-	-	-	-
Computers & Information Systems	1	9	1	-	-	-	-	-	-	-
Entrepreneurship	1	13	-	1	-	-	-	-	-	-
Finance	1	72	-	-	-	-	-	1	-	-
General Business Admin	1	14	-	1	-	-	-	-	-	-
Marketing	2	21	-	1	1	-	-	-	-	-
Operations Management	1	2	1	-	-	-	-	-	-	-
<b>TOTAL</b>	<b>11</b>	<b>26</b>	<b>3</b>	<b>4</b>	<b>1</b>	<b>-</b>	<b>-</b>	<b>3</b>	<b>-</b>	<b>-</b>

**UNIVERSITY OF ROCHESTER**

**Distribution of Undergraduate Courses by Section Size  
Fall 2007**

Eastman School of Music	#	Avg.								
	Sect.	Size	1-9	10-19	20-29	30-39	40-49	50-99	100-199	200+
Accompanying	4	16	2	1	-	1	-	-	-	-
Arts Leadership Curriculum	13	13	4	7	2	-	-	-	-	-
Composition	12	7	9	3	-	-	-	-	-	-
Conducting	5	14	3	1	-	-	1	-	-	-
Eastman Initiatives Curriculum	2	72	1	-	-	-	-	-	1	-
Eastman School of Music	3	13	1	1	1	-	-	-	-	-
English as a Second Language	3	9	2	1	-	-	-	-	-	-
Ensembles	18	32	6	6	2	-	2	-	2	-
Ethnomusicology	-	-	-	-	-	-	-	-	-	-
Guitar Class	2	5	2	-	-	-	-	-	-	-
<b>Humanities</b>	<b>38</b>	<b>11</b>	<b>12</b>	<b>26</b>	<b>-</b>	<b>-</b>	<b>-</b>	<b>-</b>	<b>-</b>	<b>-</b>
Anthropology and Religion	1	15	-	1	-	-	-	-	-	-
Art History	3	9	2	1	-	-	-	-	-	-
English	3	12	1	2	-	-	-	-	-	-
Film Studies	1	17	-	1	-	-	-	-	-	-
French	6	8	3	3	-	-	-	-	-	-
Freshman Writing Seminar	12	11	2	10	-	-	-	-	-	-
German	5	11	2	3	-	-	-	-	-	-
History	1	15	-	1	-	-	-	-	-	-
Humanities	2	9	1	1	-	-	-	-	-	-
Italian	3	10	1	2	-	-	-	-	-	-
Philosophy	-	-	-	-	-	-	-	-	-	-
Psychology	1	16	-	1	-	-	-	-	-	-
Jazz Studies & Contemp Media	28	7	21	6	1	-	-	-	-	-
Music Education	46	5	37	9	-	-	-	-	-	-
Music History	7	25	2	3	-	-	-	2	-	-
Opera	4	8	2	2	-	-	-	-	-	-
Pedagogy	3	9	1	2	-	-	-	-	-	-
Theory	29	24	-	19	2	1	5	2	-	-
<b>SUBTOTAL</b>	<b>217</b>	<b>13.585253</b>	<b>105</b>	<b>87</b>	<b>8</b>	<b>2</b>	<b>8</b>	<b>4</b>	<b>3</b>	<b>-</b>
<b>Applied Music</b>	<b>192</b>	<b>7</b>	<b>145</b>	<b>40</b>	<b>4</b>	<b>1</b>	<b>-</b>	<b>2</b>	<b>-</b>	<b>-</b>
Bassoon	3	7	2	1	-	-	-	-	-	-
Chamber Music	12	21	3	4	2	1	-	2	-	-
Clarinet	6	7	5	1	-	-	-	-	-	-
Double Bass	2	11	1	-	1	-	-	-	-	-
Euphonium	2	4	2	-	-	-	-	-	-	-
Flute	4	8	3	1	-	-	-	-	-	-
Guitar	3	5	2	1	-	-	-	-	-	-
Harp	1	10	-	1	-	-	-	-	-	-
Harpsichord	2	7	2	-	-	-	-	-	-	-
Horn	2	11	1	1	-	-	-	-	-	-
Jazz Lessons	14	4	14	-	-	-	-	-	-	-
Keyboard	6	8	5	1	-	-	-	-	-	-
Lute	1	1	1	-	-	-	-	-	-	-
Oboe	3	6	2	1	-	-	-	-	-	-
Organ	6	3	6	-	-	-	-	-	-	-
Percussion	3	13	1	1	1	-	-	-	-	-
Piano	21	7	14	7	-	-	-	-	-	-
Piano Class	29	6	23	6	-	-	-	-	-	-
Piccolo	1	8	1	-	-	-	-	-	-	-
Saxophone	3	9	2	1	-	-	-	-	-	-
Strings	1	4	1	-	-	-	-	-	-	-
Trombone	4	5	4	-	-	-	-	-	-	-
Trumpet	5	5	4	1	-	-	-	-	-	-
Tuba	2	5	2	-	-	-	-	-	-	-
Viola	8	5	6	2	-	-	-	-	-	-
Violin	14	6	10	4	-	-	-	-	-	-
Violoncello	9	4	7	2	-	-	-	-	-	-
Voice	25	6	21	4	-	-	-	-	-	-
<b>TOTAL</b>	<b>409</b>	<b>7</b>	<b>250</b>	<b>127</b>	<b>12</b>	<b>3</b>	<b>8</b>	<b>6</b>	<b>3</b>	<b>-</b>

**UNIVERSITY OF ROCHESTER**  
**Distribution of Undergraduate Courses by Section Size**  
**Fall 2007**

School of Medicine and Dentistry	#	Avg.			20-	30-	40-	50-	100-	
	Sect.	Size	1-9	10-19	29	39	49	99	199	200+
Microbiology	2	38	-	-	-	1	1	-	-	-
<b>TOTAL</b>	<b>2</b>	<b>38</b>	<b>-</b>	<b>-</b>	<b>-</b>	<b>1</b>	<b>1</b>	<b>-</b>	<b>-</b>	<b>-</b>

School of Nursing	#	Avg.			20-	30-	40-	50-	100-	
	Sect.	Size	1-9	10-19	29	39	49	99	199	200+
Nursing	18	27	6	-	6	1	2	3	-	-
Nursing/Community Center	9	21	2	3	2	-	1	1	-	-
<b>TOTAL</b>	<b>27</b>	<b>25</b>	<b>8</b>	<b>3</b>	<b>8</b>	<b>1</b>	<b>3</b>	<b>4</b>	<b>-</b>	<b>-</b>

Notes: Registrar's Student Section Extract includes all registrants who have not withdrawn as of the fourth week of classes; includes auditors; excludes labs and independent study.

All cross-listed registrations are listed in the parent course.

Source: Student Information Files (ISIS), Institutional Research Report

**UNIVERSITY OF ROCHESTER**  
**Full-time Tenure-track Faculty\***

	1997-98	1998-99	1999-00	2000-01	2001-02	2002-03	2003-04	2004-05	2005-06	2006-07	2007-08
<b>SCHOOL</b>											
Arts & Sciences	260	261	258	259	258	258	261	260	259	259	270
Engineering & Applied Sciences	53	51	50	49	53	57	57	60	57	58	60
<b>The College Subtotal</b>	<b>313</b>	<b>312</b>	<b>308</b>	<b>308</b>	<b>311</b>	<b>315</b>	<b>318</b>	<b>320</b>	<b>316</b>	<b>317</b>	<b>330</b>
Simon Graduate School of Business	41	40	46	48	46	47	44	41	34	32	33
Warner Graduate School of Education & Human Development	21	18	17	20	21	21	25	23	24	25	22
Eastman School of Music	86	81	82	80	82	86	86	89	86	84	83
School of Medicine & Dentistry	529	532	547	536	542	603	650	731	776	782	824
School of Nursing	17	17	14	15	16	18	18	19	17	18	23
<b>University Total</b>	<b>1,007</b>	<b>1,000</b>	<b>1,014</b>	<b>1,007</b>	<b>1,018</b>	<b>1,090</b>	<b>1,141</b>	<b>1,223</b>	<b>1,253</b>	<b>1,258</b>	<b>1,315</b>

\*Full-time tenure-track faculty includes faculty who are tenured, and those in track towards tenure.  
School of Medicine and Dentistry counts are submitted by that school's dean's office.



**SCHOOL AND DEPARTMENT**

**THE COLLEGE**

**Arts & Sciences**

Anthropology	6	5	7
Art & Art History	11	11	12
Biology	16	17	19
Brain and Cognitive Science	17	14	17
Chemistry	18	19	19
Clinical and Social Psychology	12	13	13
Computer Science	14	14	15
Earth and Environmental Sciences	6	7	7
Economics	18	14	16
English	19	19	20
History	14	15	16
Linguistics	3	4	4
Mathematics	18	21	19
Modern Languages & Cultures	15	14	14
Music	5	5	4
Philosophy	9	9	9
Physics and Astronomy	26	26	25
Political Science	20	21	22
Religion & Classics	10	9	10
Sociology	2	2	2
<b>SUBTOTAL</b>	<b>259</b>	<b>259</b>	<b>270</b>

**School of Engineering  
and Applied Sciences**

Biomedical Engineering	5	5	6
Chemical Engineering	7	8	8
Electrical & Computer Engineering	17	18	18
Mechanical Engineering	13	12	13
Optics	15	15	15
<b>SUBTOTAL</b>	<b>57</b>	<b>58</b>	<b>60</b>

<b>THE COLLEGE SUBTOTAL</b>	<b>316</b>	<b>317</b>	<b>330</b>
-----------------------------	------------	------------	------------

**Simon Graduate School of  
Business Administration**

<b>34</b>	<b>32</b>	<b>33</b>
-----------	-----------	-----------

**Warner Graduate School of Education and  
Human Development**

<b>24</b>	<b>25</b>	<b>22</b>
-----------	-----------	-----------

Clinical faculty (non-tenure track) are not reported on this table.

**Eastman School of Music**

Composition	5	5	5
Conducting/Ensemble	4	4	4
Humanities	5	6	7
Jazz and Contemporary Media	5	5	5
Music Education	4	3	3
Musicology	8	9	7
Opera	1	1	1
Organ	2	2	2
Piano	8	8	8
Strings	14	15	15
Theory	11	10	10
Voice	8	8	7
Woodwind, Brass, Percussion	11	8	9
<b>ESM SUBTOTAL</b>	<b>86</b>	<b>84</b>	<b>83</b>

**UNIVERSITY OF ROCHESTER**  
**Full-time Tenure-track Faculty**

2005-06

2006-07

2007-08

**SCHOOL AND DEPARTMENT**

**School of Medicine and Dentistry\***

	<u>Tenured</u> Prof & Assoc Prof	<u>On-track</u> All Eligible Ranks	<u>Tenured</u> Prof & Assoc Prof	<u>On-track</u> All Eligible Ranks	<u>Tenured</u> Prof & Assoc Prof	<u>On-track</u> All Eligible Ranks
Anesthesiology	4	21	4	23	5	27
Biochemistry and Biophysics	17	3	16	1	15	4
Biomedical Engineering	2	4	2	4	2	4
Biomedical Genetics	4	5	4	5	4	3
Biostatistics & Computational Biology	3	12	3	16	4	17
Center for Aging & Developmental Biology	6	5	5	4	4	3
Center for Cardiovascular Research	1	5	1	6	1	5
Center for Musculoskeletal Research	-	2	1	4	-	6
Center for Oral Biology	4	2	3	2	3	4
Center for Pediatric Biomedical Research	-	2	-	2	-	-
Center for Vaccine Biology & Immunology	4	4	4	3	4	4
Community & Preventive Medicine	4	10	3	14	3	12
Dentistry	1	16	1	16	1	14
Dermatology	2	6	3	6	4	5
Emergency Medicine	-	20	-	24	-	27
Environmental Medicine	5	9	6	9	6	8
Family Medicine	1	12	1	9	2	9
Imaging Sciences	5	29	5	30	6	30
Laboratory Animal Medicine	-	1	-	1	-	1
Medical Humanities	-	-	-	-	-	1
Medicine	26	120	24	116	24	122
Microbiology & Immunology	12	9	12	8	12	13
Neurobiology & Anatomy	11	7	10	7	11	8
Neurology	13	38	14	38	15	45
Neurosurgery	3	6	2	6	2	8
Obstetrics & Gynecology	5	15	5	17	5	16
Ophthalmology	2	8	2	12	2	12
Orthopaedics & Rehabilitation	4	28	4	21	4	20
Otolaryngology	2	4	2	4	3	2
Pathology & Laboratory Medicine	9	17	13	18	12	24
Pediatrics	15	63	16	56	15	62
Pharmacology & Physiology	14	2	14	3	12	2
Psychiatry	6	50	7	50	8	49
Radiation Oncology	4	8	5	6	5	8
Surgery	5	26	6	28	7	32
Urology	3	10	3	12	3	13
Subtotal	197	579	201	581	204	620

**Medicine & Dentistry Subtotal**

<b>776</b>	<b>782</b>	<b>824</b>
------------	------------	------------

Professors and Associate Professors in Option C-T: 170  
Professional Service Faculty: 209  
Service Faculty: 77  
Research Track Faculty: 138

Additional Faculty not included in Tenure count: 517

**School of Nursing**

Clinical faculty (non-tenure track) are not reported on this table.

<b>19</b>	<b>18</b>	<b>23</b>
-----------	-----------	-----------

	2005-06	2006-07	2007-08
<b>TOTAL UNIVERSITY</b>	<b>1,255</b>	<b>1,258</b>	<b>1,315</b>

Sources: Provost's Office, School of Medicine and Dentistry Dean's Office

**UNIVERSITY OF ROCHESTER**  
**Faculty and Staff in University Divisions\***  
**As of September 20, 2007**

UNIVERSITY DIVISIONS	Full- and Part-time Active Employees		
	FT	PT	TOTAL
Central Administration	1,634	111	1,745
The College, Arts and Sciences	860	89	949
School of Engineering/Laser Lab	432	14	446
Simon Grad School of Business	115	2	117
Warner Grad School of Education	60	8	68
Eastman School of Music	222	29	251
School of Medicine & Dentistry	3,699	428	4,127
School of Nursing	110	30	140
Memorial Art Gallery	44	20	64
Strong Memorial Hospital	5,678	1,271	6,949
Sr Vice President for Health Sciences	639	75	714
<b>SUBTOTAL</b>	<b>13,493</b>	<b>2,077</b>	<b>15,570</b>

STRONG HEALTH DIVISIONS	Full- and Part-time Active Employees		
	FT	PT	TOTAL
Highland Hospital	1,602	442	2,044
Highlands at Brighton	187	41	228
Visiting Nurse Service	463	217	680
<b>SUBTOTAL</b>	<b>2,252</b>	<b>700</b>	<b>2,952</b>

<b>TOTAL</b>	<b>15,745</b>	<b>2,777</b>	<b>18,522</b>
--------------	---------------	--------------	---------------

\*Time-as-reported (TAR) and Casual employees are excluded.

Source: Human Resources