

UNIVERSITY OF ROCHESTER
Full-time Tenure-track Faculty*

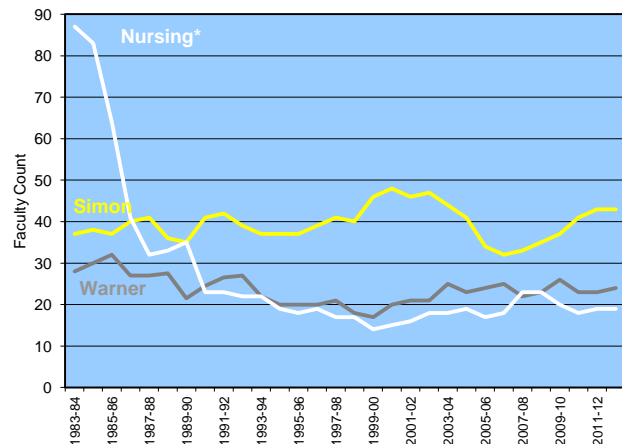
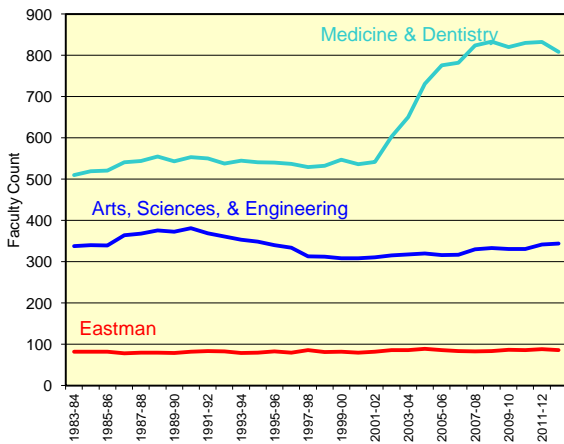
SCHOOL	1983-84	1984-85	1985-86	1986-87	1987-88	1988-89	1989-90	1990-91	1991-92	1992-93
School of Arts & Sciences	288	291	288	309	306	314.5	311.5	320.5	306.5	301
Hajim School of Engineering & Applied Sciences	50	49	51	55	62	61	61	61	62	60
Schools of Arts, Sciences, & Engineering	338	340	339	364	368	376	373	382	369	361
Simon Graduate School of Business	37	38	37	40	41	36	35	41	42	39
Warner Graduate School of Education	28	30	32	27	27	27.5	21.5	24.5	26.5	27
Eastman School of Music	82	82	82	78	80	80	79	82	84	83
School of Medicine & Dentistry	510	519	521	541	544	555	543	553	550	538
School of Nursing	87	83	64	41	32	33	35	23	23	22
University Total	1,082	1,092	1,075	1,091	1,092	1,107	1,086	1,105	1,094	1,070

	1993-94	1994-95	1995-96	1996-97	1997-98	1998-99	1999-00	2000-01	2001-02	2002-03
School of Arts & Sciences	294	291	284	279	260	261	258	259	258	258
Hajim School of Engineering & Applied Sciences	59	58	56	55	53	51	50	49	53	57
Schools of Arts, Sciences, & Engineering	353	349	340	334	313	312	308	308	311	315
Simon Graduate School of Business	37	37	37	39	41	40	46	48	46	47
Warner Graduate School of Education	22	20	20	20	21	18	17	20	21	21
Eastman School of Music	79	80	83	80	86	81	82	80	82	86
School of Medicine & Dentistry	545	541	540	537	529	532	547	536	542	603
School of Nursing	22	19	18	19	17	17	14	15	16	18
University Total	1,058	1,046	1,038	1,029	1,007	1,000	1,014	1,007	1,018	1,090

	2003-04	2004-05	2005-06	2006-07	2007-08	2008-09	2009-10	2010-11	2011-12	2012-13
School of Arts & Sciences	261	260	259	259	270	273	252	254	258	262
Hajim School of Engineering & Applied Sciences	57	60	57	58	60	60	79	77	84	82
Schools of Arts, Sciences, & Engineering	318	320	316	317	330	333	331	331	342	344
Simon Graduate School of Business	44	41	34	32	33	35	37	41	43	43
Warner Graduate School of Education	25	23	24	25	22	23	26	23	23	24
Eastman School of Music	86	89	86	84	83	84	87	86	88	86
School of Medicine & Dentistry	650	731	776	782	824	833	820	830	832	808
School of Nursing	18	19	17	18	23	23	20	18	19	19
University Total	1,141	1,223	1,253	1,258	1,315	1,331	1,321	1,329	1,347	1,324

Computer Science moved into Hajim Engineering School

*Full-time tenure-track faculty includes faculty who are tenured, and those on-track towards tenure.
 Prior to 2011-12, School of Medicine and Dentistry counts were submitted by the academic affairs office for that school.



*Decrease in Nursing faculty (1984 through 1987) is due to reclassification of faculty from tenure track into clinical tracks