



Demo Days Slides

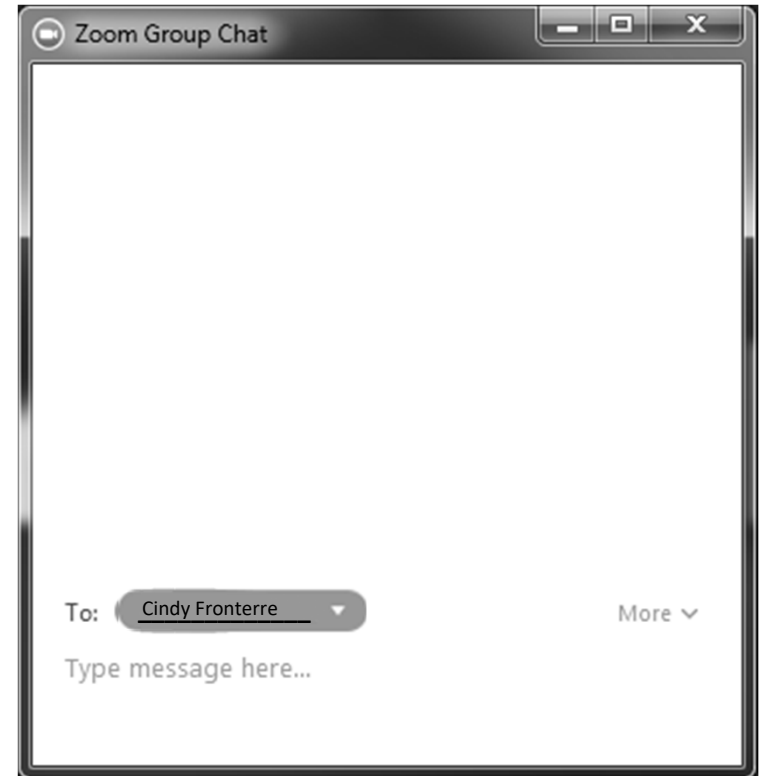
April 2018



Chatting for Zoom Participants

For those joining the Zoom:

- 1) Please access the **Chat** feature at the bottom of your screen
- 2) Please chat directly with Cindy Fronterre (She will then pose questions on your behalf)
- 3) Select Cindy Fronterre in the drop down menu in the chat window (do not select “everyone”)



Agenda

- ▶ Program Overview
- ▶ Community Engagement
- ▶ Demonstration
- ▶ Q&A
- ▶ Wrap up

Community Engagement

- Project Website (<http://www.rochester.edu/urstudent/>)
 - News posts provide project announcements, you can Subscribe for updates
 - SIG menu – SIG participants detailed
 - Contact menu – send a question to the UR Student project team



UR Student Project

Begin learning UR Student fundamentals by reading our project essentials section at the bottom of the page. Visit the **Faculty**, **Staff**, or **Student** menu page to learn how this project will impact you.

Welcome to UR Student!

UR Student Live Demonstration

- <https://wd5-impl.workday.com/wday/authgwy/rochester1/login.html>
- Presentation materials have:
 - Screen shots of each page for reference
 - Terminology page for review

Landing Page

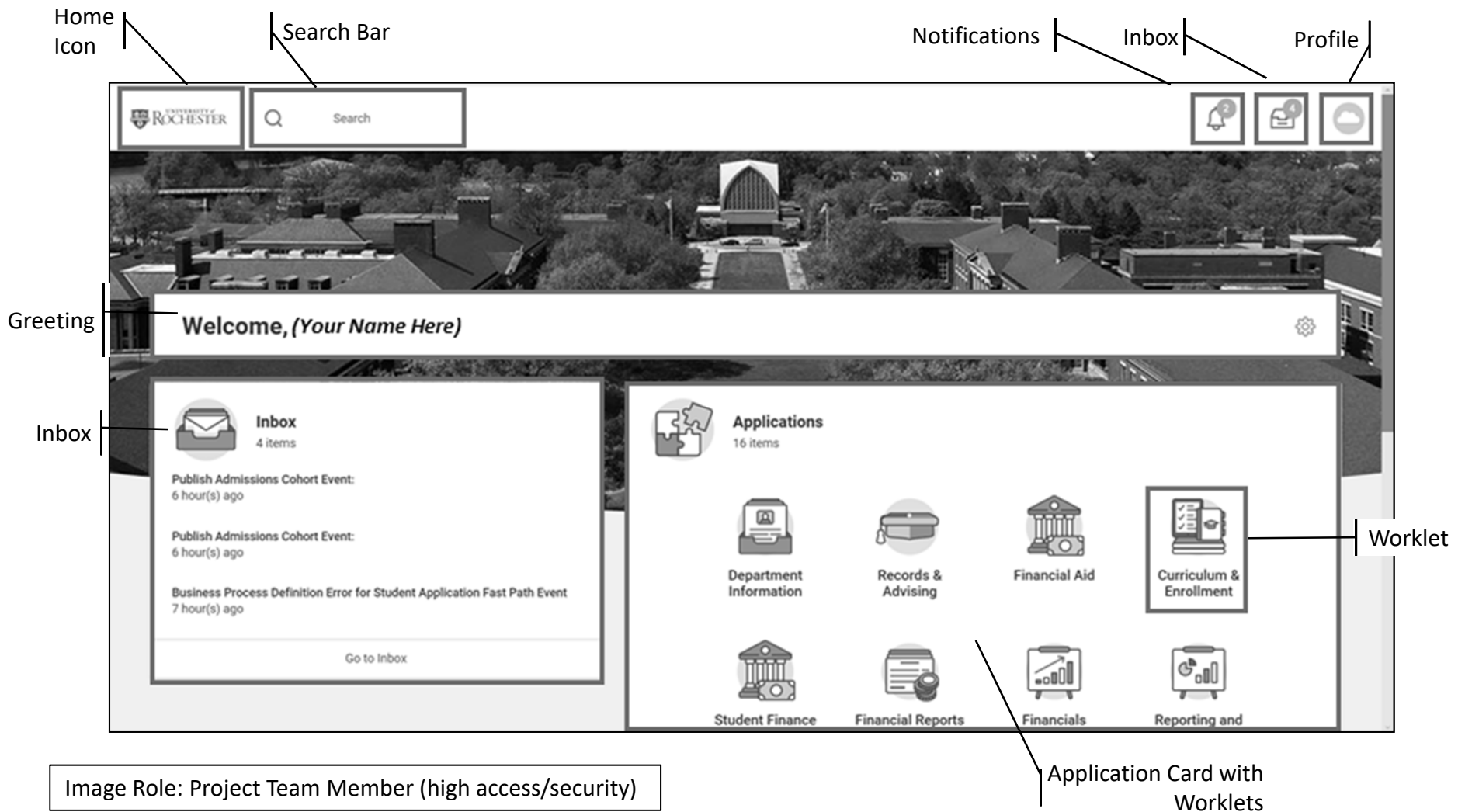


Image Role: Project Team Member (high access/security)

Application Card with Worklets

Student Profile

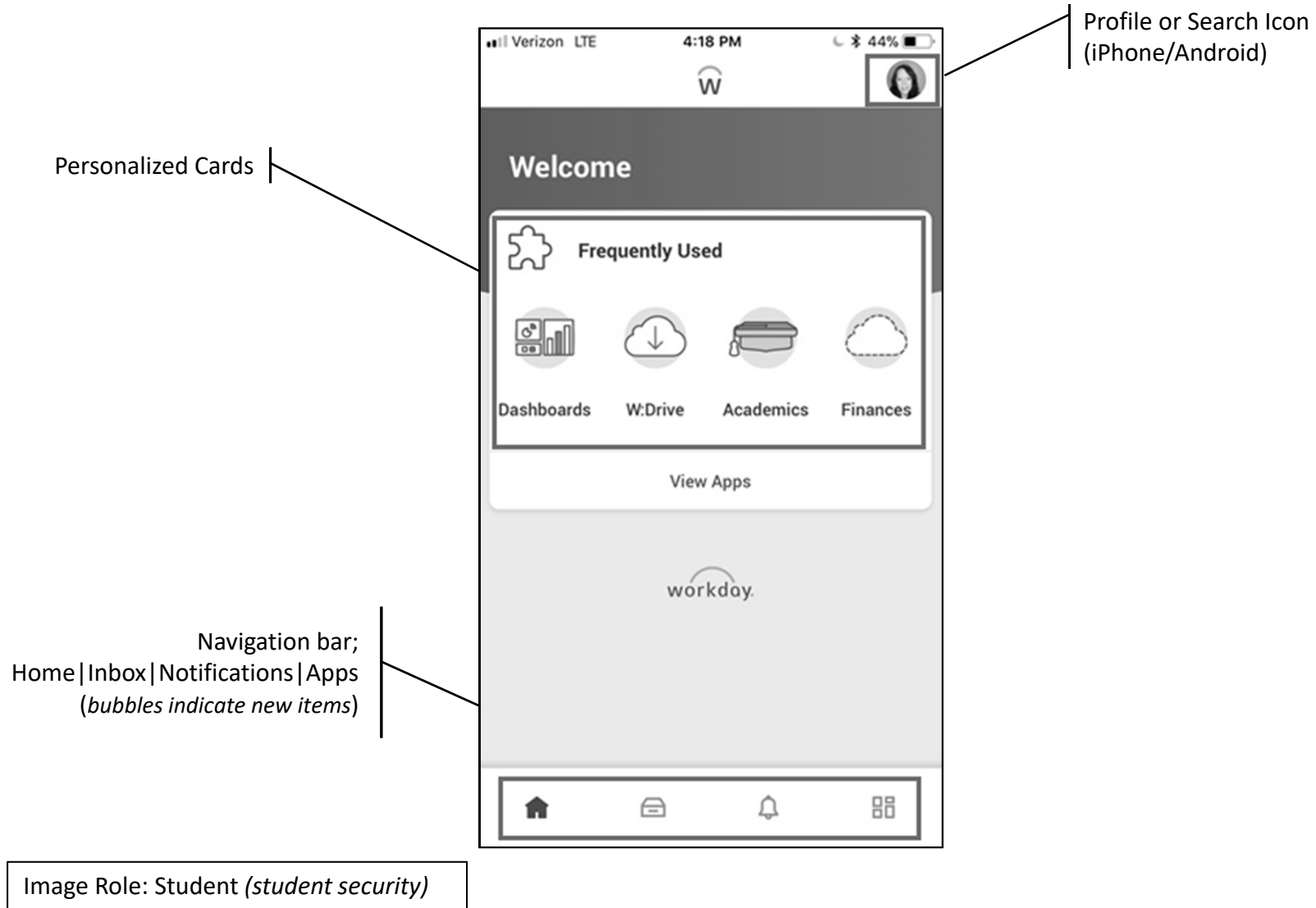
Navigation for a student record

Dashboard Cards

The screenshot shows a web interface for a student profile. At the top left is the University of Rochester logo and a search bar containing 'julia smith'. On the left is a dark sidebar with a profile picture of Julia Smith, her name, and role 'Student | University of Rochester'. Below this are buttons for 'Actions' and 'Email', and a menu with options: Summary, Personal, Contact, Academics, Student Financials, and More (5). The main content area has three dashboard cards. The 'Academic Progress' card shows a 40% progress indicator and text: 'Mechanical Engineering B.S. Undergraduate Major', '2 Satisfied of 5 Requirements'. The 'Student Information' card lists: Student ID: STU001110, Academic Level: Undergraduate, Class Standing: Second Year, Academic Unit: Hajim School of Engineering & Applied Sciences, Program of Study: Mechanical Engineering B.S. Undergraduate Major. The 'Current Classes' card shows '> Enrolled Sections - Fall 2018'. A line from the 'Dashboard Cards' label points to the 'Academic Progress' and 'Current Classes' cards.

Image Role: Project Team Member (high access/security)

Mobile Student View



Next Steps

- 5 minute survey sent to all registrants
- Next Demo Days May 24th
 - Agenda: Student Onboarding in UR Student
 - Communicated on the UR Student website



UNIVERSITY *of* ROCHESTER



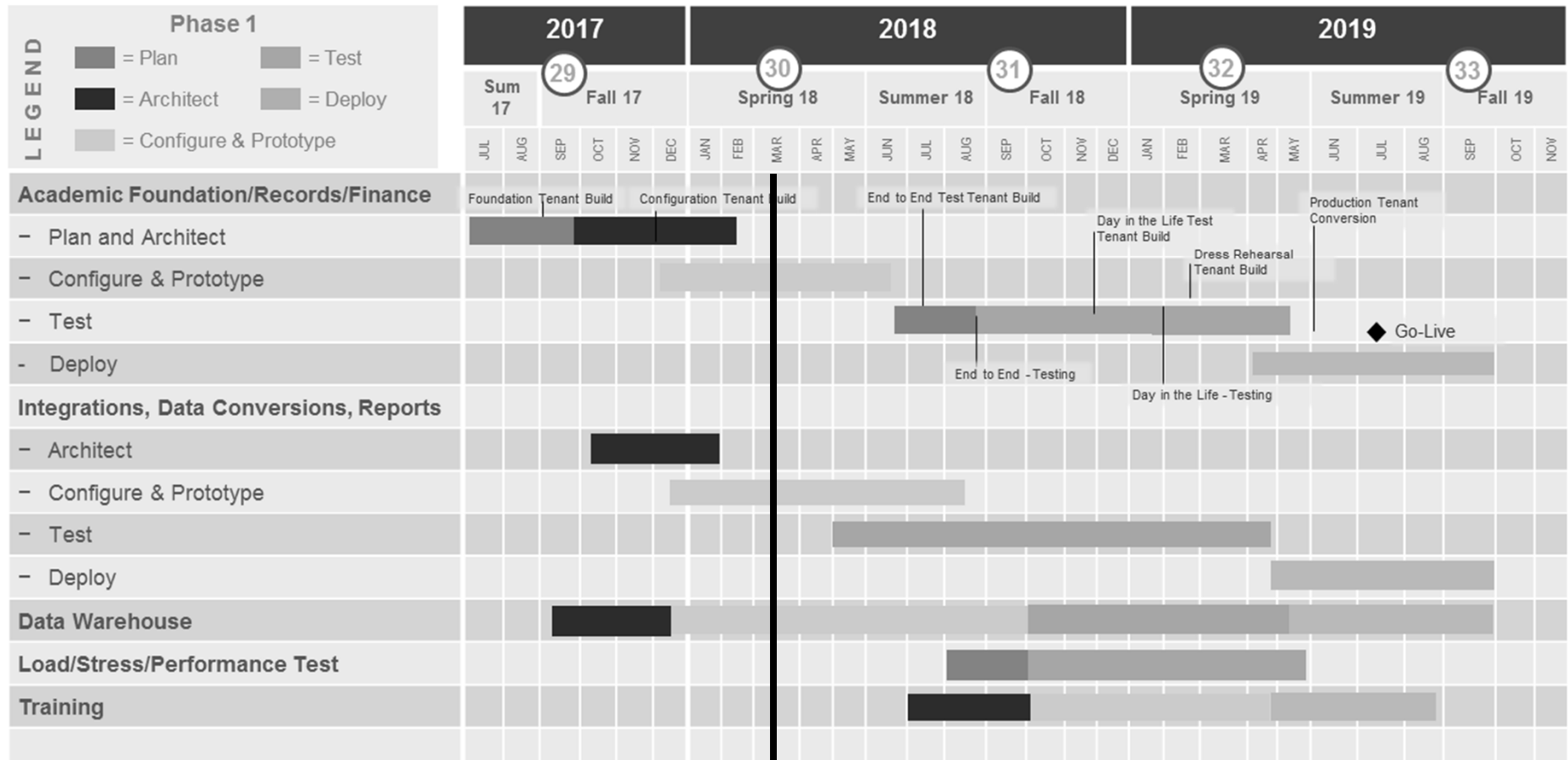
UR Student

Appendix

Terminology

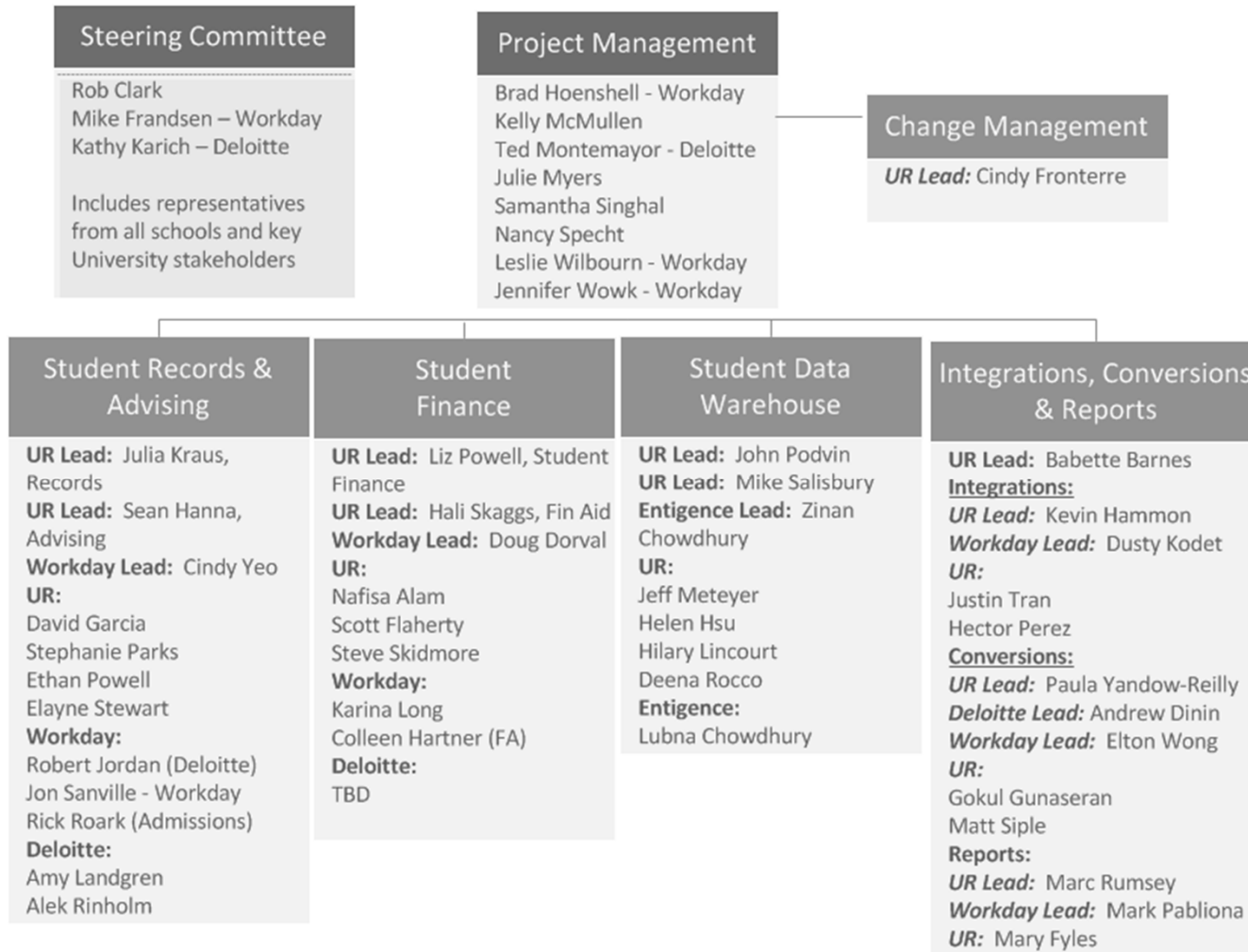
- **Home (University of Rochester Logo)**
 - Will always navigate you back to the landing page
- **Inbox (Envelope)**
 - Contains all activity that is required of you
- **Notifications (Bell)**
 - Displays notifications regarding business processes and rule-based alerts
- **Profile Page (Cloud or Your Photo)**
 - Opens all sections available from the Home page. You can configure your personal setting here as well.
- **Ellipses (Twinkie, Related Action)**
 - Displays the related actions menu for an object (available only if the user has permission to perform additional actions on that object)
- **Search Bar (Magnifying Glass)**
 - Can type three letters of a given word (or the whole word) to receive a response from the system
- **Applications (Picture Icons in the middle of the page)**
 - Workday calls these widgets and they can take you to functional areas, reports, or dashboards
- **Categories (within the search function)**
 - Are the different areas within Workday such as Banking, Payroll, People, Reporting, Student, etc.
- **Student Profile**
 - Includes the student's personal information, registration, billing, financial aid, contact information, etc. in one convenient place
- **Functional Areas**
 - Tabs on the student profile for Academics, Student Financials, Financial Aid, etc.
- **Workday App (for Mobile)**
 - Can be downloaded from the App Store to use on a Droid, iPhone, or iPad

Program Overview – Phase 1 Timeline



We are here

Program Overview - Project Organization Chart



Community Engagement

SPECIAL INTEREST GROUPS (SIGs)

The Special Interest Groups (SIGs) have members from all schools. Participation of SIG members is integral to the success of the program; membership is intended to be part-time.

SIG Members Contributions to include:

- Input into common business practices
- Input into system configuration
- Business requirements' definition
- Identification of necessary data for conversion
- Validation of converted data
- Creation of test cases
- Execution of user testing
- Serving as a project champion

Advising SIG

Faculty SIG (*new*)

Student Records &
Registration SIG

Student Finance SIG

Institutional Research
& Reporting SIG

Information
Technology SIG



UNIVERSITY *of* ROCHESTER



UR Student