

Subject: University of Rochester Electric Scooter

Applies to: [All University Schools and Campuses]

I. **Policy:** Effective August 2, 2020 electric scooters are legal to operate on some streets and highways in New York State. The University of Rochester has designated pathways to operate and designated dismount zones for electric scooters. In accordance with campus regulations, electric scooters may be used to travel to campus, but scooters from the public scooter share program must be left at the designated dismount zones and not operate within the campus perimeter outlined on the campus maps listed below.

University of Rochester prioritizes the safety of the campus community and therefore prohibits the motorized operation of electric scooters on campus.

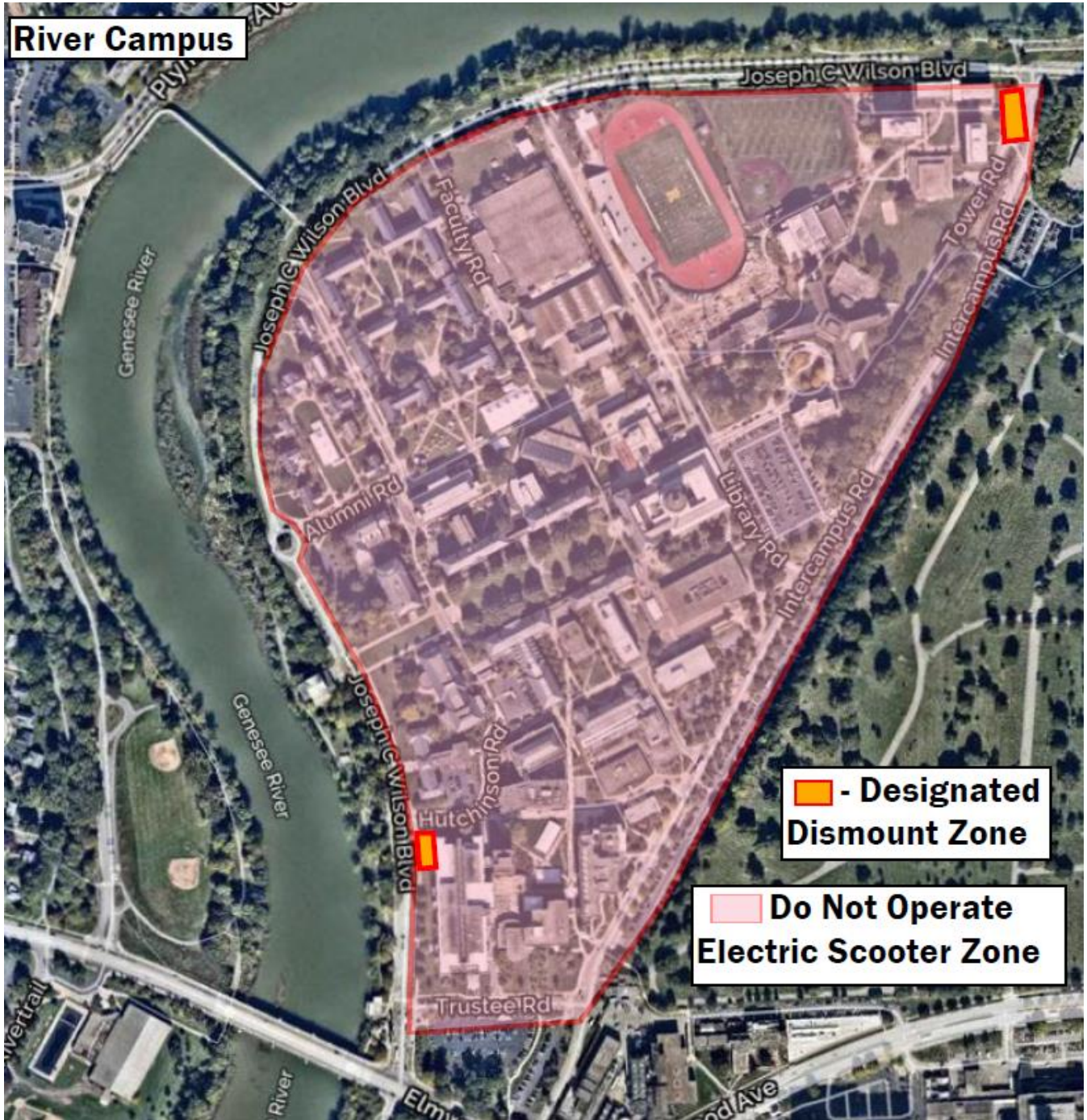
Electric scooters left unattended on campus will be considered abandoned and subject to impound.

II. Guidelines:

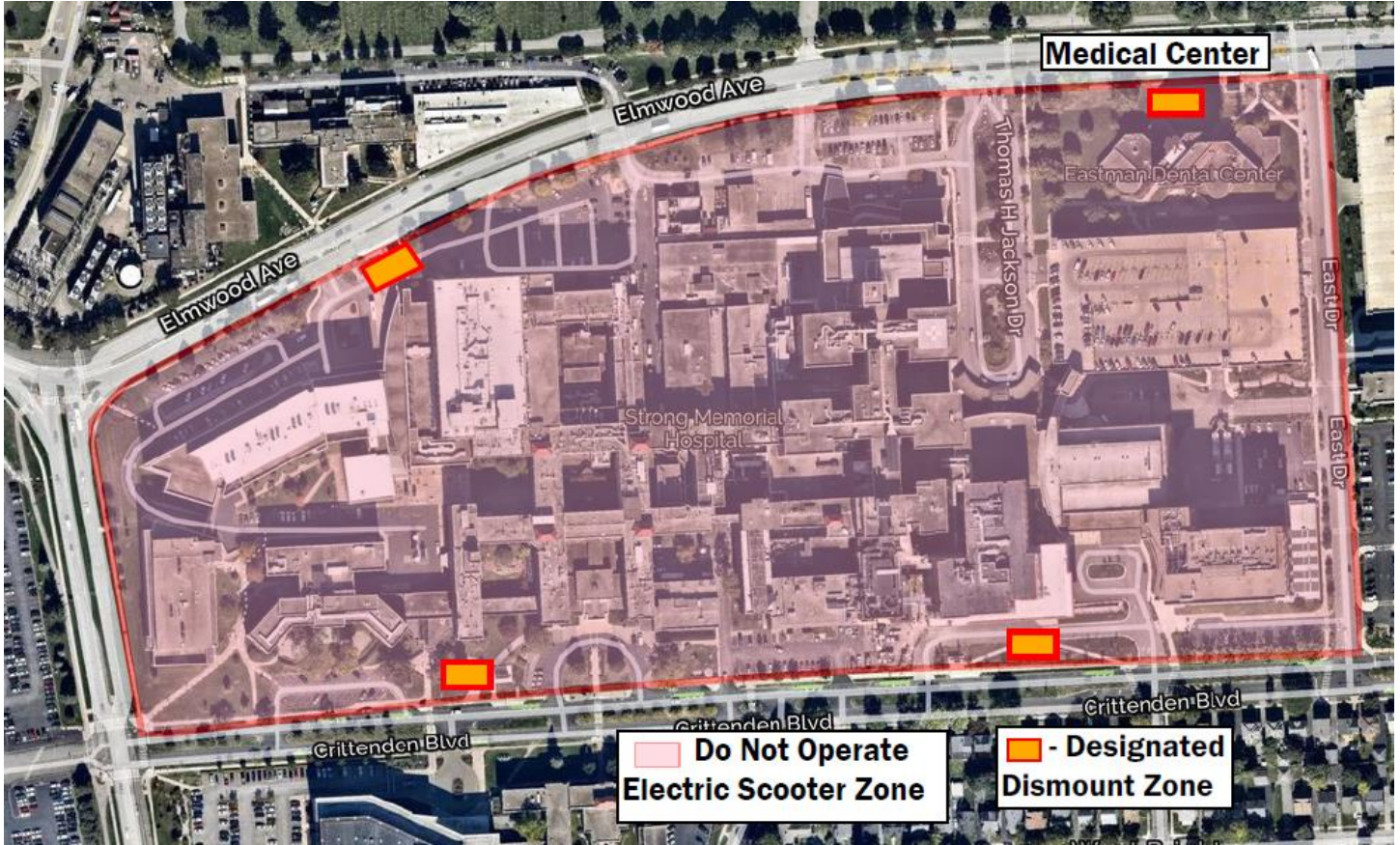
- Electric scooters are prohibited from use on all campus sidewalks, campus roadways, and all other outdoor and indoor spaces included in the shaded areas on the campus maps in the bullet below labeled Campus Maps.
- Electric scooters that are part of the public scooter share program and have been used to travel to and from campus must be parked upright in the designated dismount zones. Devices found parked anywhere else on campus other than the dismount zones are subject to immediate impound. Personal scooter devices may not be parked or stored in any University facility, in University housing, or in any Medical Center building. Personal scooter devices must be parked upright in a bike rack.
- University of Rochester is not responsible for theft or damage to electric scooters.
- Operation is permitted on the public roads near the campuses including Wilson Boulevard, Elmwood Avenue, Mount Hope Avenue, Crittenden Boulevard, Kendrick Road, and East River Road, and are subject to all state and local traffic laws. Operation is also permitted on the Genesee Riverway trail parallel to Wilson Boulevard and the cycle path parallel to Elmwood Avenue.
- Policy will be reviewed after each spring semester
- Users should follow New York State law: <https://dmv.ny.gov/registration/electric-scooters-and-bicycles-and-other-unregistered-vehicles>

- Campus Maps -

River Campus:



Medical Center:



South Campus:





Eastman School of Music:



See also Policies: [list if applicable]